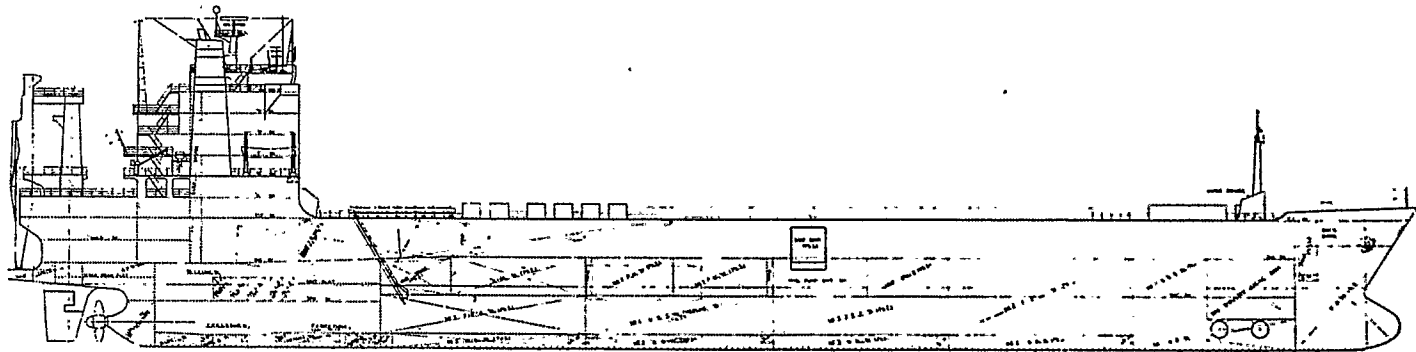


Call sign: DEEQ	Draught	8.62 m	cargo hold ventilation
Builders: HDW AG Hamburg u. Kiel, Werk Kiel	Speed: 19.5 kn		4 decks
Yard number: 113	Propelling machinery:		1 slewing stern ramp (MacGREGOR) 160 t, (two-way traffic)
Type: Container Ro/Ro Ship	2 M.A.N. diesel, typ 9L 52/55, 6977 kW at 450/135 min ⁻¹ , each		1 stern door (MacGREGOR) 17.5 m x 11.2 m
Delivery: 7 Dec. 1977	1 reduction gear,		2 side doors (MacGREGOR) width 4.65 m, depth 4.2 m, 40 t, each
Owner: Radbod Reederei GmbH & Co. KG, Elsfleth	1 controllable pitch propeller		1 slewing ramp 1st to 2nd deck P. width 2.90 m, two 40' trailers 40 t, each
Managing owner: Heyo Janssen, Bad Zwischenahn	Auxiliary engines:		1 trailer lift P. and S. 1 trailer 80 t, each
Classification: GL + 100 A 4 E mit Frbd 3.846	2 MaK diesel, type 6M 282 AK, 908 kW at 900 min ⁻¹ , each		1 lifting platform S. 2nd deck S.
Ro-Ro-Schiff, eingerichtet für Containertransport + MC AUT	2 generators 1150 kVA, 440 V, 60 Hz, each		1 ramp from 2nd to 3rd deck
Date of class: Dec. 1982	1 dieselgenerator set 312 kVA, 440 V,		Lane metres: 3260 m whereof 2302 m under deck and 958 m on 1st deck
Tonnage	2 shaft driven generators 1565 kVA, each		Intake: 259 trailers 40', whereof 82 on deck, or 177 trailers 40' under deck + 519 containers 20' (3 tiers) on weatherdeck
14 187.67 GRT	Total output: 5742 kVA, 440 V, 60 Hz		container capacity: 20' 519
7 167.82 NRT	Equipment:		1st deck
Deadweight 15 075 t	2 bow thruster 882.5 kW, each		cargo capacity:
Length o. a. 193.32 m	CO ₂ fire extinguishing system,		2nd deck 23 500 m ³
Length b. p. 178.00 m	2 Decca radars, gyro compass, autopilot,		3rd deck 12 700 m ³
Moulded breadth 27.00 m	direction finder, echograph, Loran,		tank top 8 200 m ³
Depth to weatherdeck 17.60 m	Decca navigator, satellite navigator,		Total 44 400 m ³
Depth to upper trailerdeck 12.40 m	speedometer, weather FAX, wind indicator,		
	Telex, wireless station, VHF-unit,		
	electr. hydr. steering gear,		
	2 windlasses/mooring winches,		
	3 electr. hydr. double mooring winches		

M/V "ONNO" ex "Kongsfjord", "Essen"



Call sign: 3FCR2 DEEF	Moulded breadth	27.00 m	5 mooring winches	147 kN, each
Builders: Sasebo Heavy Industries Co. Ltd., Sasebo/Japan	Depth to 1st deck	17.60 m	1 stern door width 11.20 m, height 7.50 m	
Yard number: 257	Depth to 2nd deck	12.40 m	1 stowing stern ramp,	
Type: Container/Ro-Ro Ship	Depth to 3rd deck	7.20 m	2 trailers 80 t, each two-way traffic	
Delivery: 21 Sept. 1977	Draught	9.10 m	1 movable ramp from 2nd to 1st deck	
Owner: Amasis Reederei GmbH & Co. KG, Elsfleth	Speed: 20.6 kn		2 trailer lifts P. and S. from tanktop to 3rd deck 80 t, each	
Managing owner: Heyo Janssen, Bad Zwischenahn	Propelling machinery:		1 fixed ramp from 2nd to 3rd deck	
Port of registry: Panama Bremen	2 KHI/M.A.N. diesel, type 9L 52/55 A, turbocharged, 6980 kW at 450/128 min ⁻¹ , each		2 side doors P. and S. with slewing ramps 40 t, each	
Classification: GL + 100 A 4 E mit Frbd 3.320	1 double reduction gear,			
Ro-Ro-Schiff eingerichtet für Containertransport + MC AUT	1 controllable pitch propeller			
Date of class: Sept. 1982	Auxiliary engines:			
Tonnage	Total output: 5550 kVA, 440 V, 60 Hz		Capacities:	containers
14 740.71 GRT	Equipment:			trailers 20' (3 tiers)
7 321.98 NRT	2 bow thrusters 883 kW, each		tanktop	32
Deadweight 15 195 t	2 Decca radars, gyro compass, autopilot,		3rd deck	8 711.8 43
Length o. a. 193.20 m	2 echo sounders, direction finder, satellite navigator, Decca navigator, Loran, speedometer, weather Fax, Data bridge system, wireless station, VHF-unit, electr. hydr. steering gear,		2nd deck	11 414.4 88
Length b. p. 178.00 m	2 hydr. windlasses		1st deck	22 150.6 73 or 522
				42 276.8 236 522

NATOTIME SEALIFT CHARTER PARTY

PARTICULARS OF VESSEL

(All particulars given are approximate)

OFFICE OF NATIONAL SECURITY PLANS

A. GENERAL PARTICULARS

ex Norefjord
ex Rheinfels

- (1) Name of vessel and year built: RADDOD 1977
- (2) Type (state whether dry cargo vessel, bulk or OBO carrier, liner, container, barge carrier, etc.): RORO
- (3) Call letters: DEEO
- (4) Flag: GERMAN
- (5) Port of registry: HAMBURG
- (6) Official register No.: 12 909
- (7) Class: G.L. + 100 A4 + MC AUT Ice Class: "E" yes
- (8) Classification Society: GERMANISCHER LLOYD
- (9) Operating line: TRAMP
- (10) Gross registered tonnage/net registered tonnage (as a closed shelter-decker/open shelter-decker, if applicable):
- (a) International: a) 14,187,67 / 7,167,92
- (b) Suez: 22,993,10 / 19,014,04
- (c) Panama: _____

- (11) (a) Summer dwt (as a closed shelter-decker/open shelter-decker, if applicable):

draught: 15 075 long tons/metric tonnes
8,614 feet/metres

TPI (tons per ^{cm} inch): about 35 to/cm

- (b) Winter dwt (as a closed shelter-decker/open shelter-decker, if applicable):

draught: _____ long tons/metric tonnes
_____ feet/metres

TPI (tons per inch): _____

(12) Maximum draught: 8, 779 feet/metres
(13) Length overall: 193, 31 feet/metres
(14) Extreme breadth: 27 feet/metres

(15) Total cargo capacity:

(a) Bale: _____ cubic feet _____ cubic metres

(b) Grain: _____ cubic feet 44400 cubic metres

(16) Capable of steaming 19 knots fully laden in good weather on 55 long tons/metric tonnes 150 180 oil plus 3 long tons/metric tonnes _____ diesel oil for auxiliaries. Port consumption of auxiliaries 3 long tons/metric tonnes _____ diesel oil.

(17) Machinery:

(a) type of main engine DIESEL (diesel, reciprocating steam, turbine, gas turbine, turbo-electric)

(18) Bunker Capacity:

(a) Fuel oil 2800 long tons/metric tonnes

(b) Diesel/gas oil 300 long tons/metric tonnes

(19) Fresh water capacity 138 long tons/metric tonnes

(20) Number of hatches and sizes (length and breadth in feet/metres):

(21) Date of last drydocking or bottom scrubbing: _____

(22) For containership, the number of cells by size:

(23) Description of lifting capacity and location of cargo gear:

(24) For RO/ROs, whether side or stern ramp:

Dimensions of stern ramp: 36 x 7 m

Dimensions of side port/stern port: H 7.5 B 11.2

Permitted weight over ramp: 160

Number of linear metres of trailer-decks: 3187

NAME: SANTOS x RADBOD
EX : NOREFJORD x RHEINFELS
YARD: HDW, KIEL, GERMANY

TYPE : RR STATUS: A
YEAR : 12/77 FLAG : PANAMANIAN
OWNER: 185 CONRO SHIPPING

DWT : 15,075	CLASS: DNV	ENGINE: 2 MAN
DRAFT: 8.62	SS : 10/87	BHP : 18,990 on RPM
LOA : 193.35 M	GRT : 12,450.00	SPEED : 17.00/ 18.00/ 15.00
LBP : 177.98	NRT : 7,209.00	CONS : 45.00/ 55.00/ 27.00
BEAM : 27.20	LDT : 9920	GRADE : IF 180 CST + PORT
DEPTH: 17.60	PLAN : Y	BOW TH: 2400HP

FEATURES:

TRLS: 259	TEU: a1127	WDK HT:	AXLD: 40 TS	RAMP: STERN SLEWING
L.M.: 3260	PAX:	MDK HT: 4.24	AXLD: 40 TS	INTL: RAMP & 2LIFTS
CARS:	DKS: 4	T/T HT: 4.2	AXLD: 40 TS	REEF: 0

EXTRA OPTIONS: a177 TRLRS + 519 TEU, 2 x SHAFT GENERATOR CPP

NAME: SANTOS x RADBOD
EX : NOREFJORD x RHEINFELS
YARD: HDW, KIEL, GERMANY

TYPE : RR STATUS: A
YEAR : 12/77 FLAG : PANAMANIAN

DWT : 15,075	CLASS: DNV	ENGINE: 2 MAN
DRAFT: 28.28	SS : 10/87	BHP : 18,990 on RPM
LOA : 634.38 F	GRT : 12,450.00	SPEED : 17.00/ 18.00/ 15.00
LBP : 583.95	NRT : 7,209.00	CONS : 45.00/ 55.00/ 27.00
BEAM : 89.24	LDT : 9920	GRADE : IF 180 CST + PORT
DEPTH: 57.75	PLAN : Y	BOW TH: 2400HP

NAME: SANTOS x RADBOD
EX : NOREFJORD x RHEINFELS
YARD: HDW, KIEL, GERMANY

TYPE : RR
YEAR : 12/77

STATUS: A
FLAG : PANAMANIAN

DWT : 15,075
DRAFT: 28.28
LOA : 634.38 F
LBP : 583.95
BEAM : 89.24
DEPTH: 57.75

CLASS: DNV
SS : 10/87
GRT : 12,450.00
NRT : 7,209.00
LDT : 9920
PLAN : Y

ENGINE: 2 MAN
BHP : 18,990 on RPM
SPEED : 17.00/ 18.00/ 15.00
CONS : 45.00/ 55.00/ 27.00
GRADE : IF 180 CST + PORT
BOW TH: 2400HP

NAME: SANTOS x RADBOD
EX : NOREFJORD x RHEINFELS
YARD: HDW, KIEL, GERMANY

TYPE : RR
YEAR : 12/77

STATUS: A
FLAG : PANAMANIAN
OWNER: 185 CONRO SHIPPING

DWT : 15,075
DRAFT: 8.62
LOA : 193.35 M
LBP : 177.98
BEAM : 27.20
DEPTH: 17.60

CLASS: DNV
SS : 10/87
GRT : 12,450.00
NRT : 7,209.00
LDT : 9920
PLAN : Y

ENGINE: 2 MAN
BHP : 18,990 on RPM
SPEED : 17.00/ 18.00/ 15.00
CONS : 45.00/ 55.00/ 27.00
GRADE : IF 180 CST + PORT
BOW TH: 2400HP

FEATURES:

TRLS: 259 TEU: a1127 WDK HT: AXLD: 40 TS RAMP: STERN SLEWING
L.M.: 3260 PAX: MDK HT: 4.24 AXLD: 40 TS INTL: RAMP & 2LIFTS
CARS: DKS: 4 T/T HT: 4.2 AXLD: 40 TS REEF: 0

EXTRA OPTIONS: a177 TRLRS + 519 TEU, 2 x SHAFT GENERATOR CPP