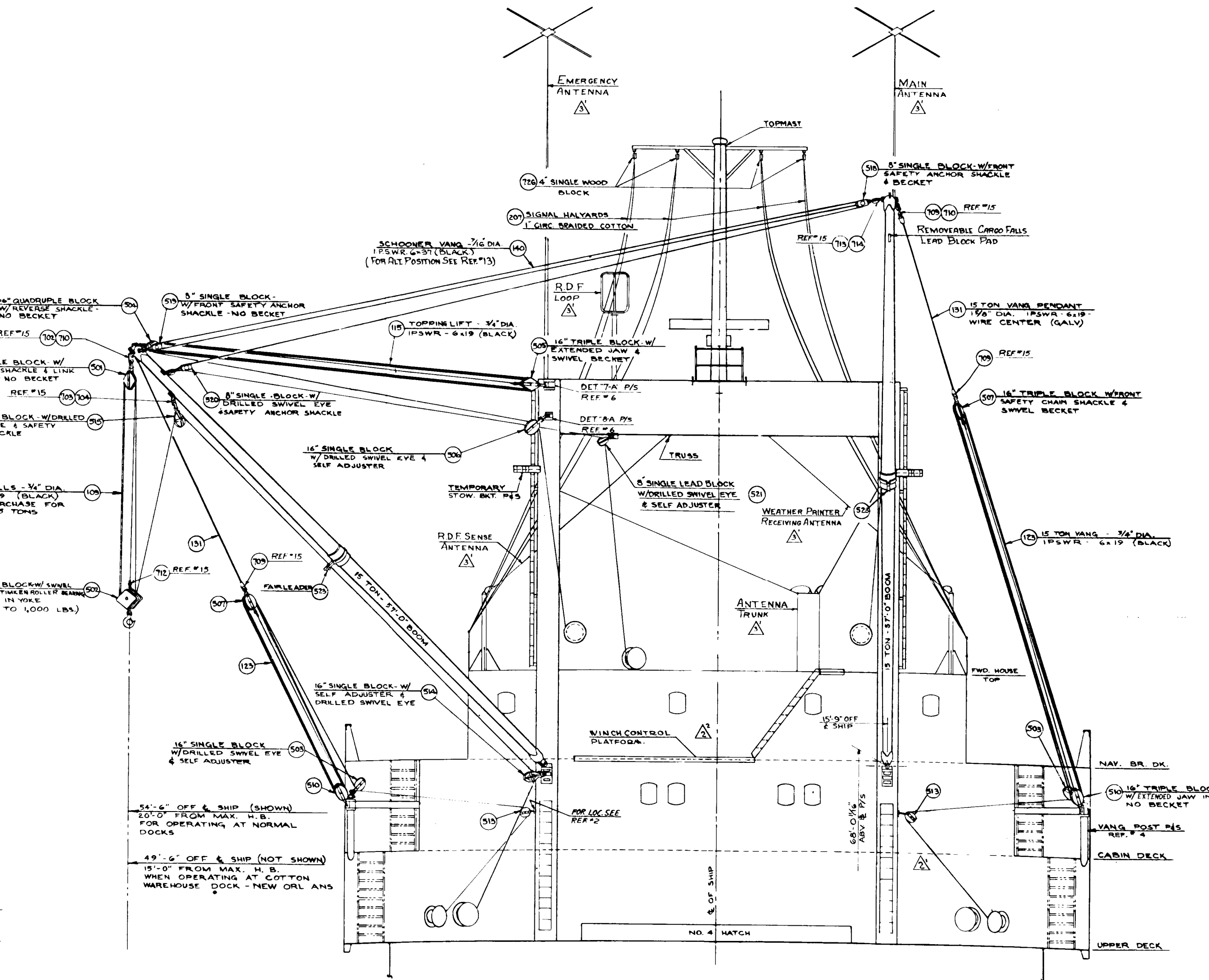
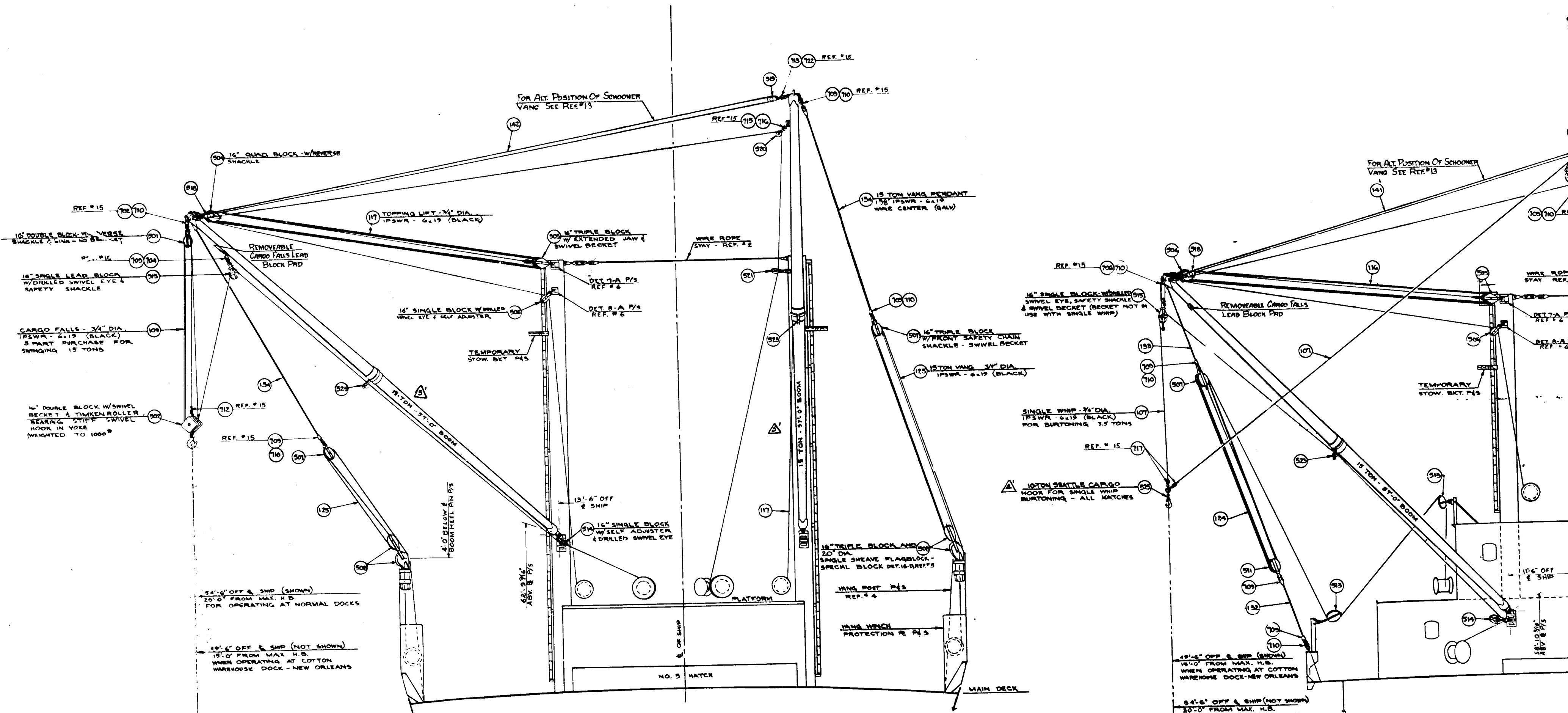


SECTION 7-B  
 LOOKING AFT TO FRAME 125  
 BOOMS RIGGED FOR BURTONING 3.5 TONS

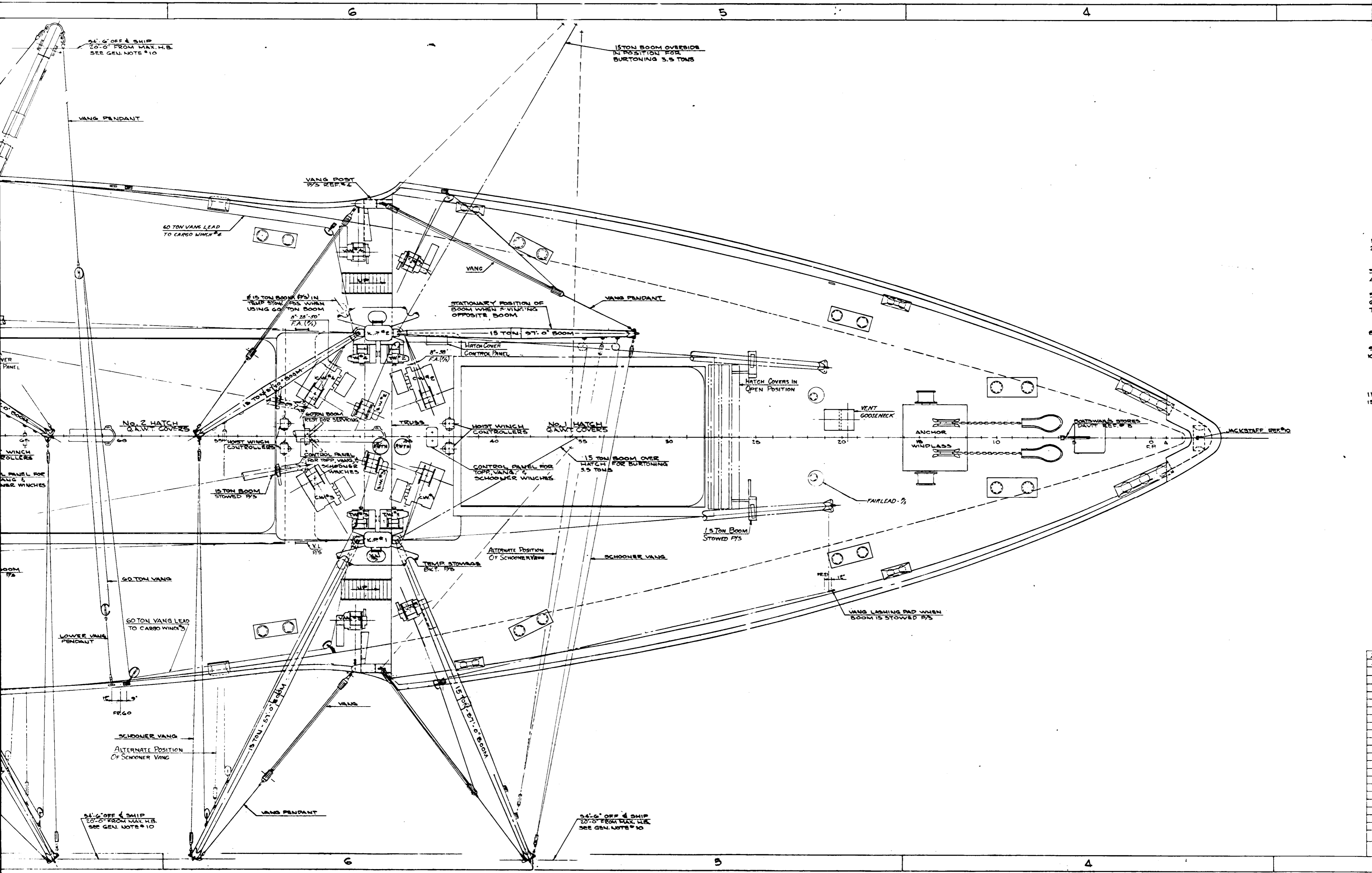


SECTION 4-B  
 LOOKING FWD TO FRAME 107  
 BOOMS RIGGED FOR SWINGING 15 TONS



SECTION 9-B  
 LOOKING AFT TO FRAME 170  
 BOOMS RIGGED FOR SWINGING 15 TONS





24'-6" OFF & SHIP  
20'-0" FROM MAX. H.B.  
SEE GEN. NOTE #10

15 TON BOOM OVERSIDE  
IN POSITION FOR  
BURTONING 3.5 TONS

60 TON VANG LEAD  
TO CARGO WINCH #4

15 TON BOOM (P/S) IN  
TEMP STOWAGE POS. WHEN  
USING 60 TON BOOM  
8'-28"-50"  
F.A. (P/S)

STATIONARY POSITION OF  
BOOM WHEN 2 VANGS  
OPPOSITE BOOM

15 TON 57'-0" BOOM

HATCH COVER  
CONTROL PANEL

HOIST WINCH  
CONTROLLERS

CONTROL PANEL FOR  
TOPP VANGS &  
SCHOONER WINCHES

No. 1 HATCH  
Q.A.W.T. COVERS

15 TON BOOM OVER  
HATCH FOR BURTONING  
3.5 TONS

15 TON BOOM  
STOWED P/S

ANCHOR  
WINDLASS

PORTWARD STORES  
DAWT REF. # 5

JACKSTAFF REF. #10

No. 2 HATCH  
Q.A.W.T. COVERS

50' HOIST WINCH  
CONTROLLERS

CONTROL PANEL  
FOR TOPP VANGS &  
SCHOONER WINCHES

60 TON BOOM  
REST FOR SERVICING

15 TON BOOM  
STOWED P/S

TEMP STOWAGE  
BKT. P/S

ALTERNATE POSITION  
OF SCHOONER VANG

SCHOONER VANG

VANG LASHING PAD WHEN  
BOOM IS STOWED P/S

60 TON VANG

60 TON VANG LEAD  
TO CARGO WINCH #3

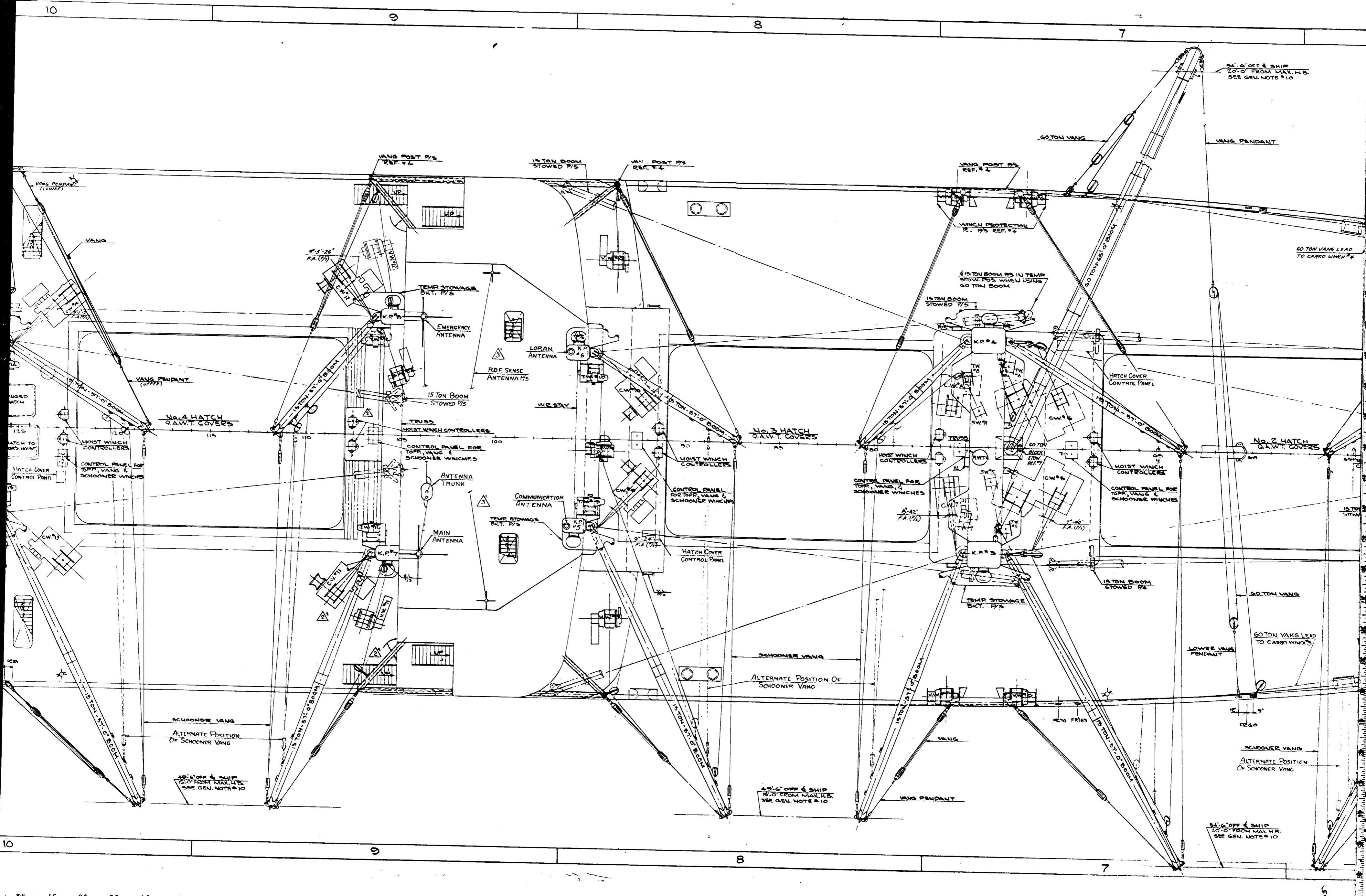
LOWER VANG  
PENDANT

SCHOONER VANG  
ALTERNATE POSITION  
OF SCHOONER VANG

VANG PENDANT

24'-6" OFF & SHIP  
20'-0" FROM MAX. H.B.  
SEE GEN. NOTE #10

24'-6" OFF & SHIP  
20'-0" FROM MAX. H.B.  
SEE GEN. NOTE #10



24'-6" OFF & SHIP  
20'-0" FROM MAX. H.B.  
SEE GEN. NOTE # 10

60 TON VANG

VANG PENDANT

60 TON VANG LEAD  
TO CARGO WINCH # 2

VANG POST P/S  
REF. # 2

WINCH PROTECTION  
R. P/S REF. # 4

15 TON BOOM P/S IN TEMP  
STOW. POS. WHEN USING  
60 TON BOOM

15 TON BOOM  
STOWED P/S

HATCH COVER  
CONTROL PANEL

No. 2 HATCH  
Q.A.W.T. COVERS

CONTROL PANEL FOR  
TOPP. VANG &  
SCHOONER WINCHES

15 TON BOOM  
STOWED P/S

60 TON VANG

60 TON VANG LEAD  
TO CARGO WINCH # 3

LOWER VANG  
PENDANT

SCHOONER VANG  
ALTERNATE POSITION  
OF SCHOONER VANG

24'-6" OFF & SHIP  
20'-0" FROM MAX. H.B.  
SEE GEN. NOTE # 10

VANG POST P/S  
REF. # 4

15 TON BOOM  
STOWED P/S

TEMP STORAGE  
BKT. P/S

EMERGENCY  
ANTENNA

LORAN  
ANTENNA

R.D.F. SENSE  
ANTENNA P/S

15 TON BOOM  
STOWED P/S

TRUSS  
HOIST WINCH CONTROLLER

CONTROL PANEL FOR  
TOPP. VANG &  
SCHOONER WINCHES

ANTENNA  
TRUNK

MAIN  
ANTENNA

TEMP STORAGE  
BKT. P/S

COMMUNICATION  
ANTENNA

15 TON-57'-0" BOOM

No. 3 HATCH  
Q.A.W.T. COVERS

CONTROL PANEL FOR  
TOPP. VANG &  
SCHOONER WINCHES

HATCH COVER  
CONTROL PANEL

SCHOONER VANG  
ALTERNATE POSITION  
OF SCHOONER VANG

24'-6" OFF & SHIP  
15'-0" FROM MAX. H.B.  
SEE GEN. NOTE # 10

VANG POST P/S  
REF. # 2

9'-5"-26"  
FA. (1/2)

TEMP STORAGE  
BKT. P/S

EMERGENCY  
ANTENNA

LORAN  
ANTENNA

R.D.F. SENSE  
ANTENNA P/S

15 TON BOOM  
STOWED P/S

TRUSS  
HOIST WINCH CONTROLLER

CONTROL PANEL FOR  
TOPP. VANG &  
SCHOONER WINCHES

ANTENNA  
TRUNK

MAIN  
ANTENNA

TEMP STORAGE  
BKT. P/S

COMMUNICATION  
ANTENNA

No. 4 HATCH  
Q.A.W.T. COVERS

CONTROL PANEL FOR  
TOPP. VANG &  
SCHOONER WINCHES

SCHOONER VANG  
ALTERNATE POSITION  
OF SCHOONER VANG

24'-6" OFF & SHIP  
15'-0" FROM MAX. H.B.  
SEE GEN. NOTE # 10

VANG PENDANT  
(LOWER)

VANG

VANG PENDANT  
(UPPER)

HOIST WINCH  
CONTROLLERS

CONTROL PANEL FOR  
TOPP. VANG &  
SCHOONER WINCHES

HATCH COVER  
CONTROL PANEL

TEMP STORAGE  
BKT. P/S

COMMUNICATION  
ANTENNA

MAIN  
ANTENNA

TEMP STORAGE  
BKT. P/S

COMMUNICATION  
ANTENNA

ANTENNA  
TRUNK

CONTROL PANEL FOR  
TOPP. VANG &  
SCHOONER WINCHES

HOIST WINCH  
CONTROLLERS

CONTROL PANEL FOR  
TOPP. VANG &  
SCHOONER WINCHES

HATCH COVER  
CONTROL PANEL

15 TON-57'-0" BOOM

15 TON-57'-0" BOOM

VANG PENDANT  
(LOWER)

VANG

VANG PENDANT  
(UPPER)

10

9

8

7

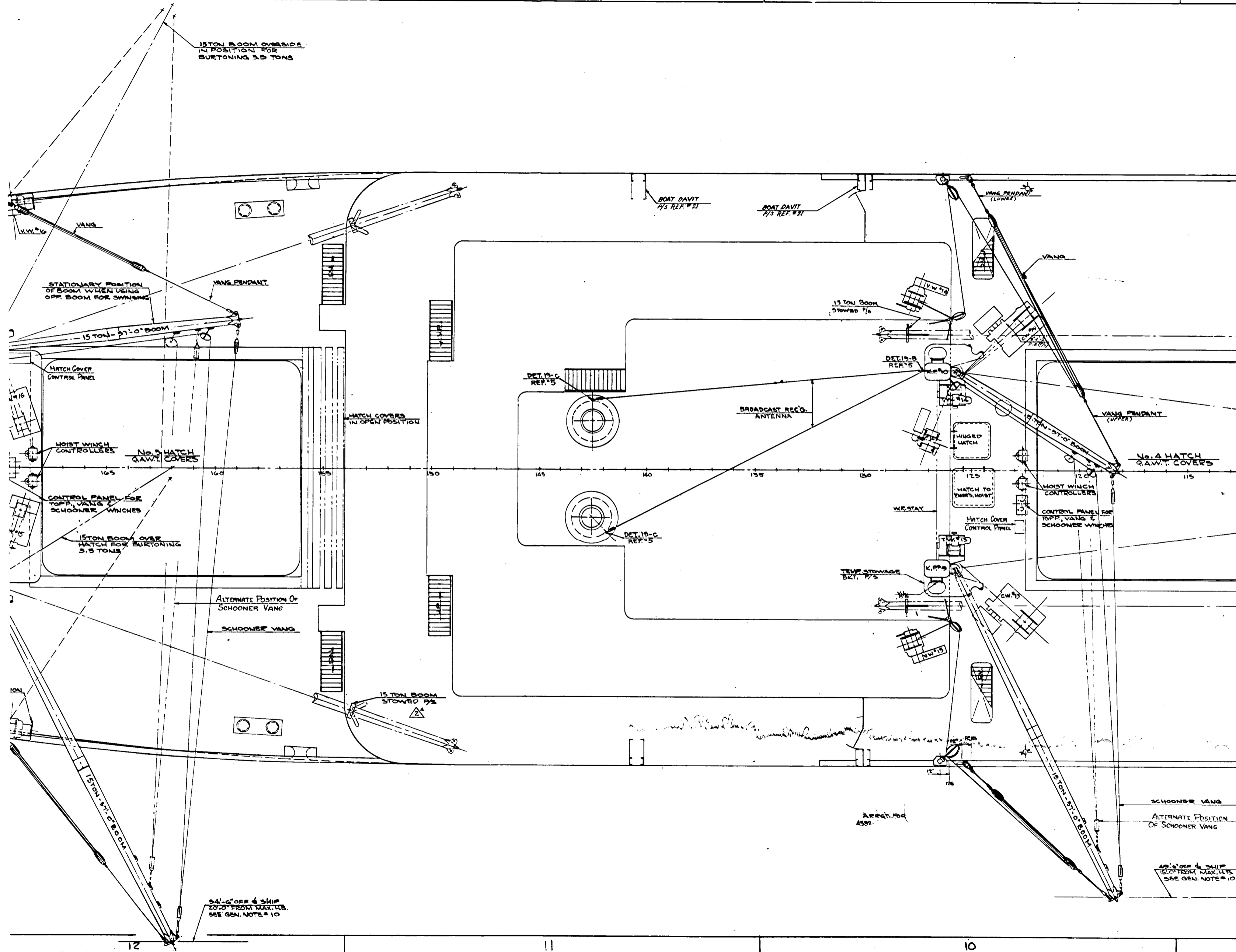
10

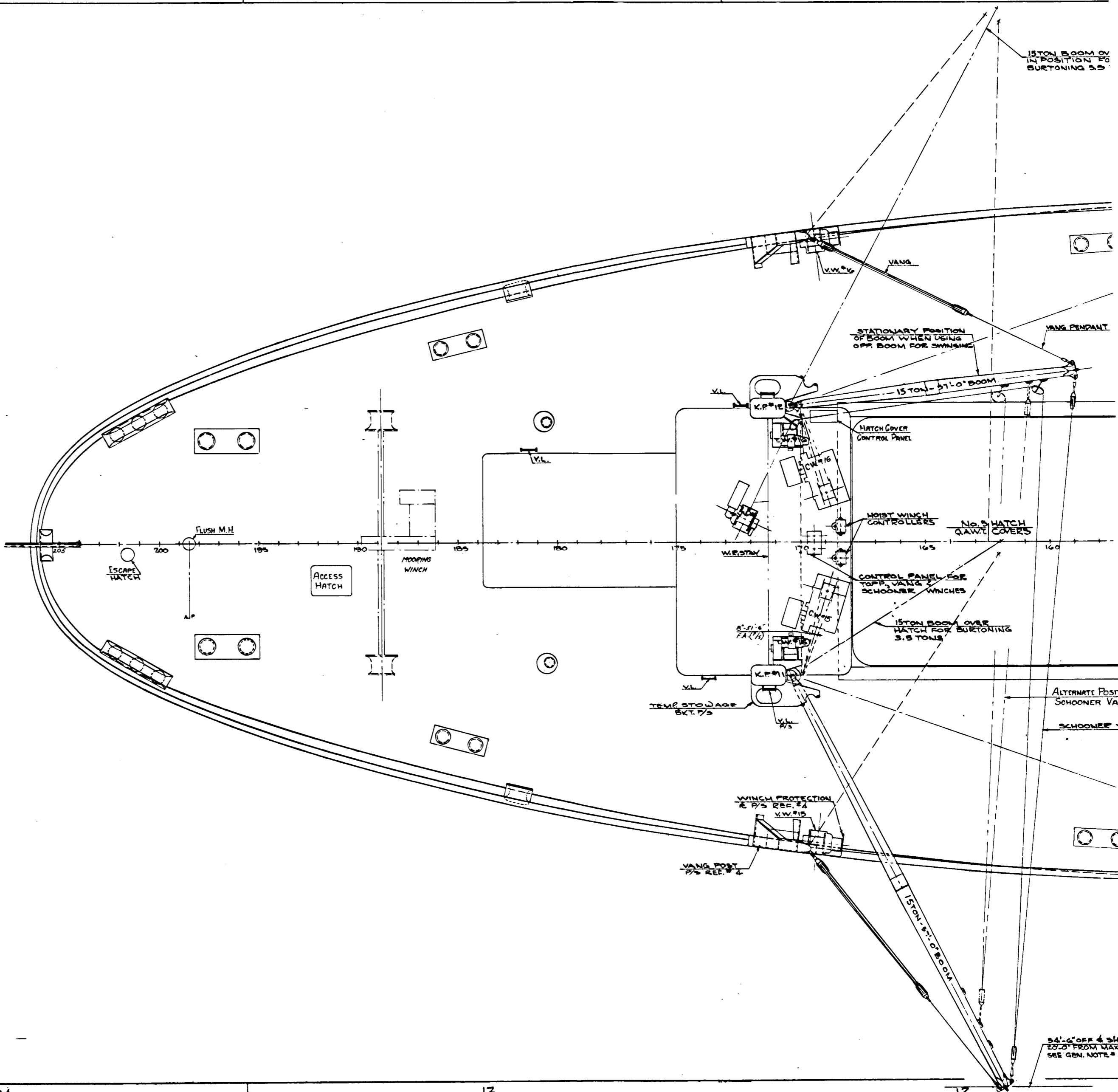
9

8

7

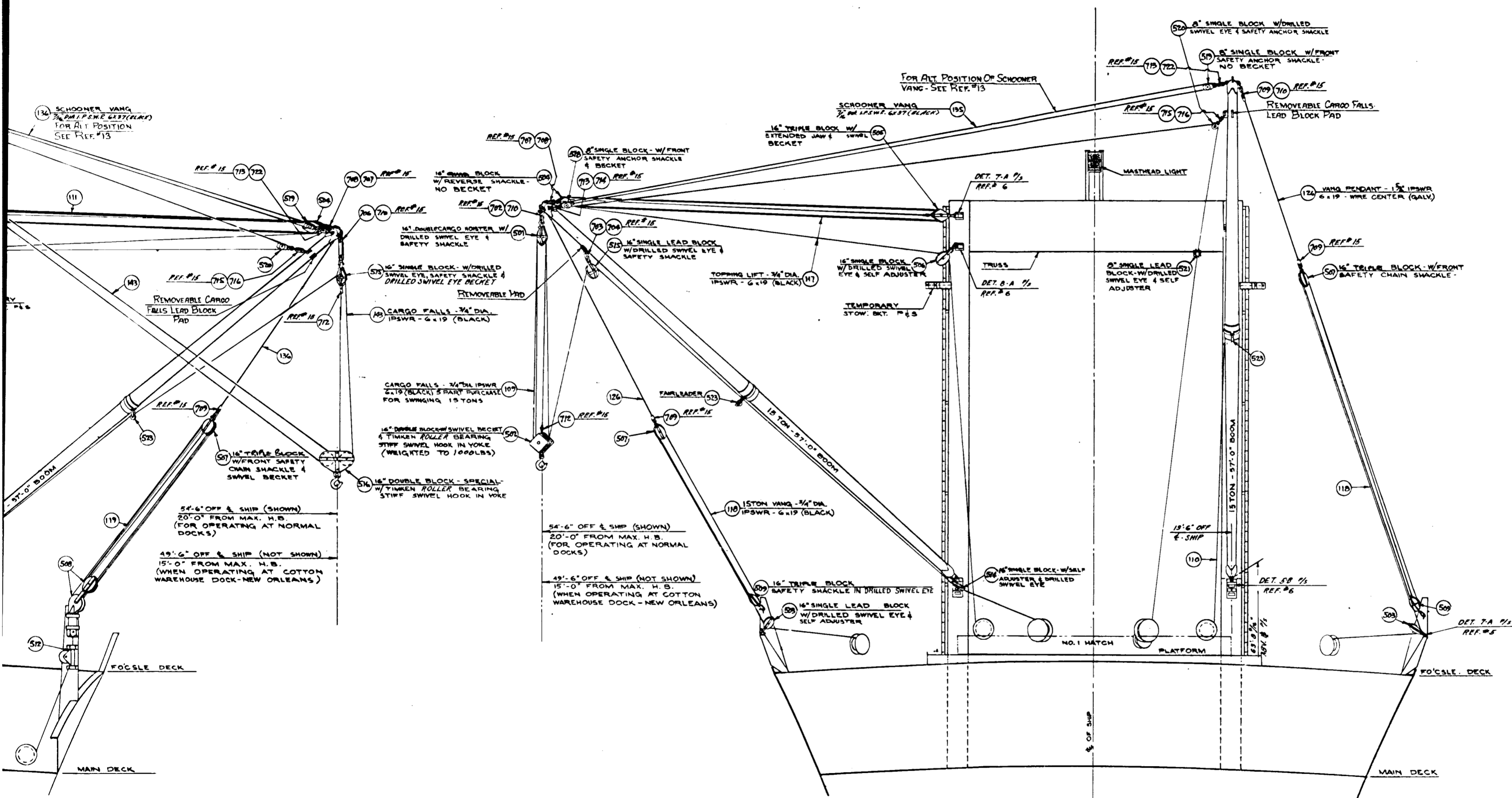
6







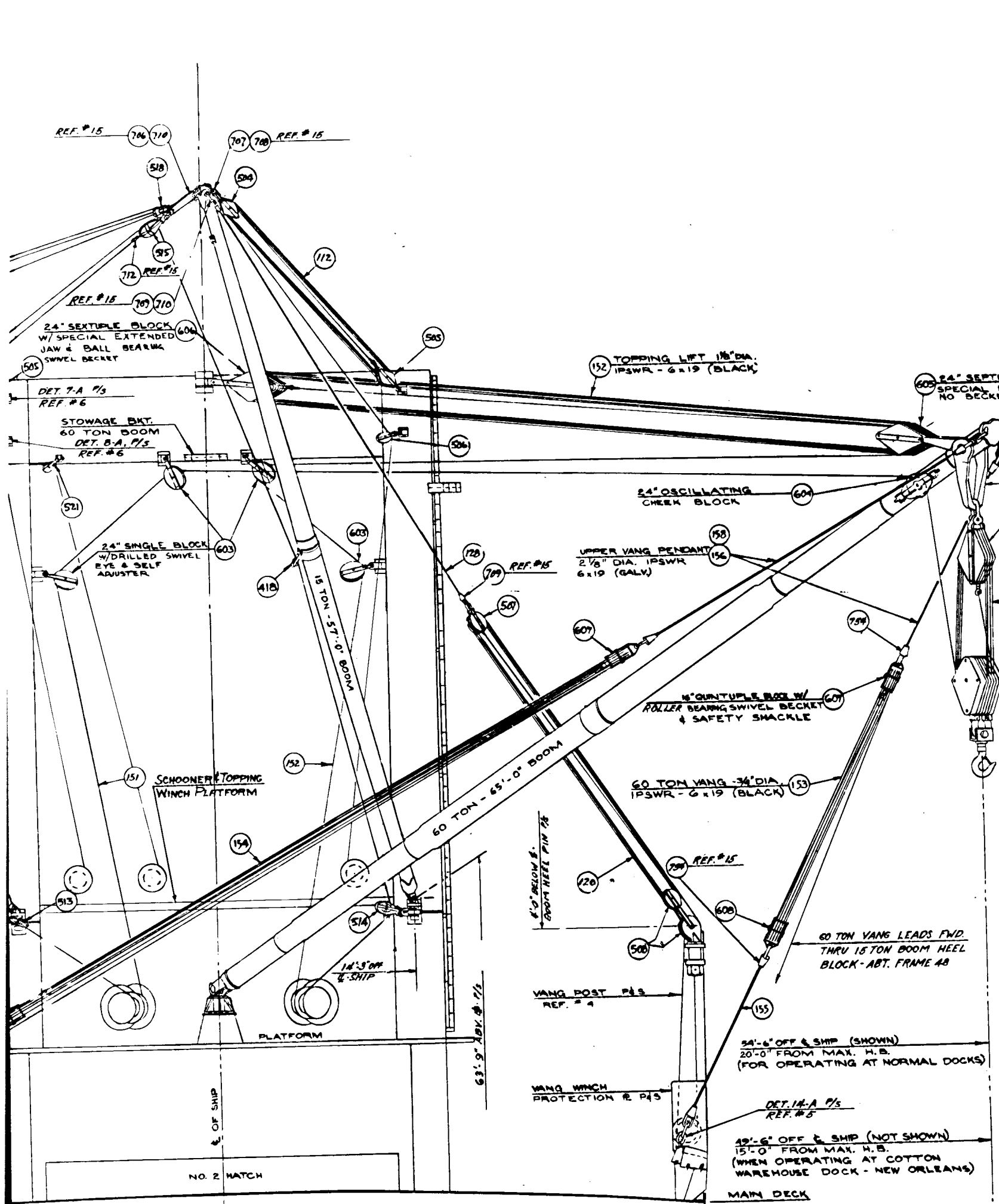




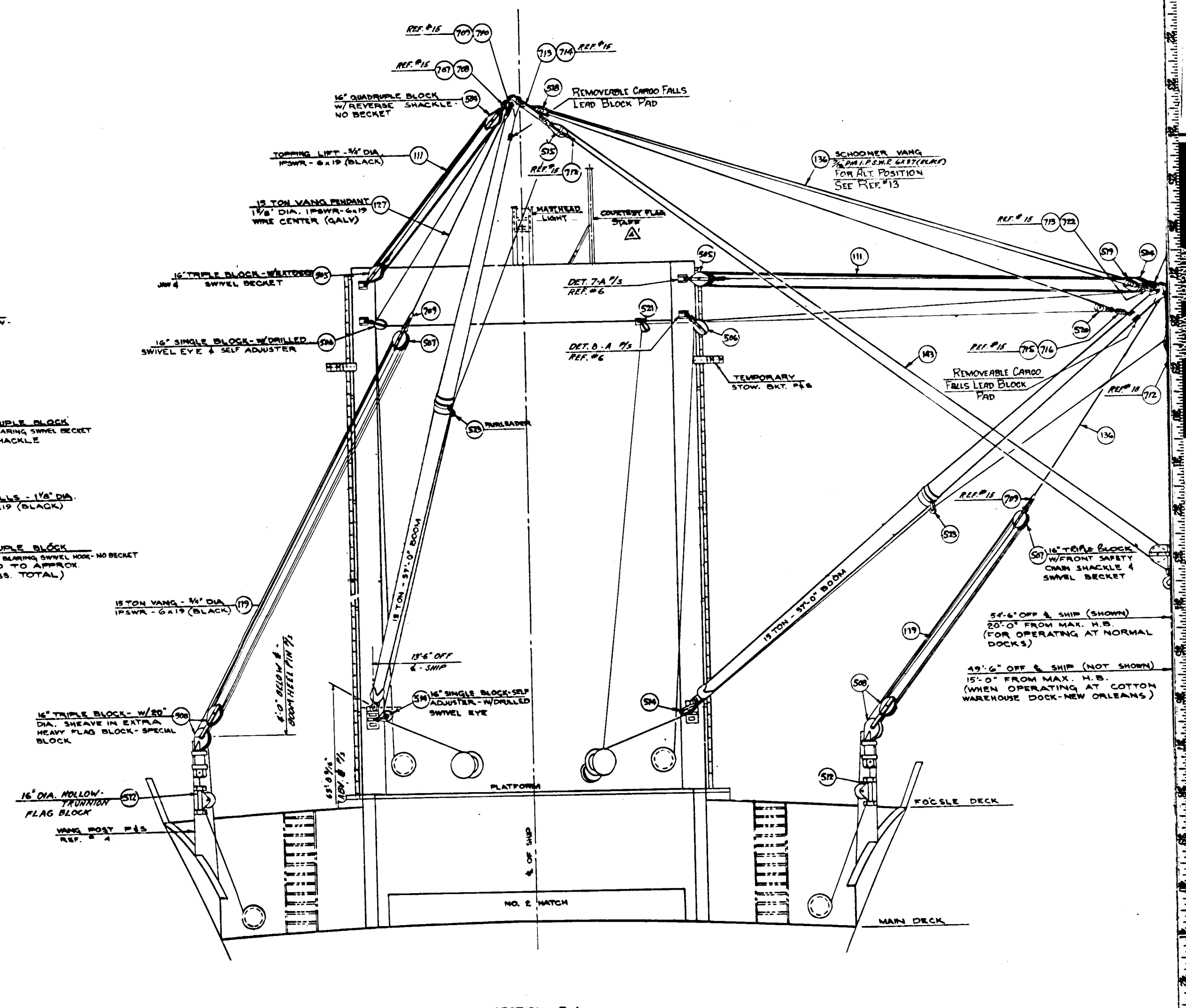
FOR GENERAL

SECTION 4-A  
 LOOKING AFT TO FRAME 46  
 BOOMS RIGGED FOR SWINGING 15 TONS

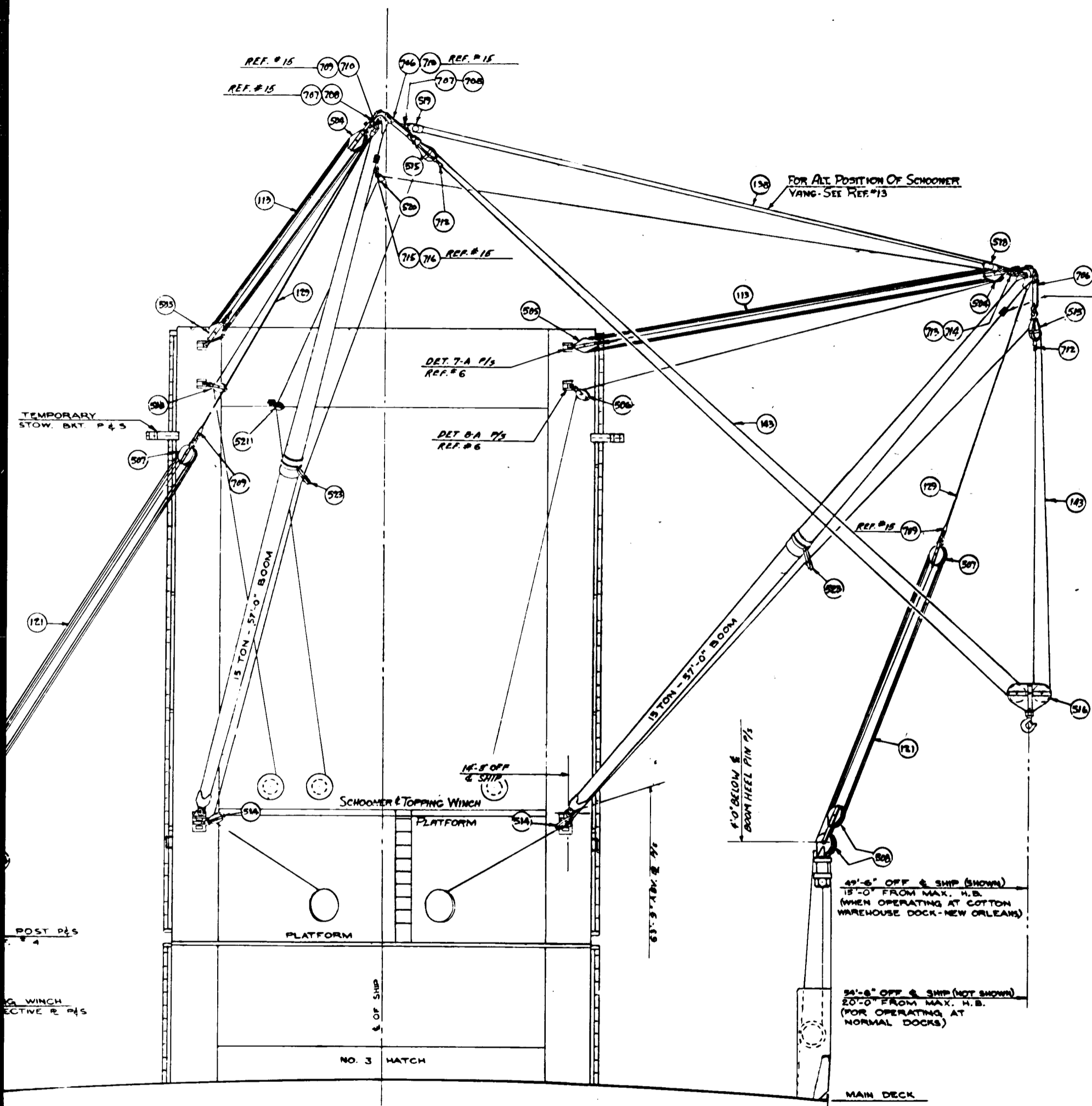
19	RIGGING ARRGT.
18	BLOCK LIST
17	ROPE LIST
16	ROPE LIST
15	LIST OF TURNBUCK
14	RIGGING ARRGT.
13	RIGGING ARRGT.
12	TOPMAST & MAIN
11	
10	JACK & ENSIGN ST
9	
8	CRANES ARRGT.
7	BOOM STOWAGE
6	RIGGING FITTING
5	RIGGING FITTING
4	VANG POSTS &
3	KINGPOSTS & TRUS
2	KINGPOSTS & TRU
1	KINGPOSTS & TRU
NO.	



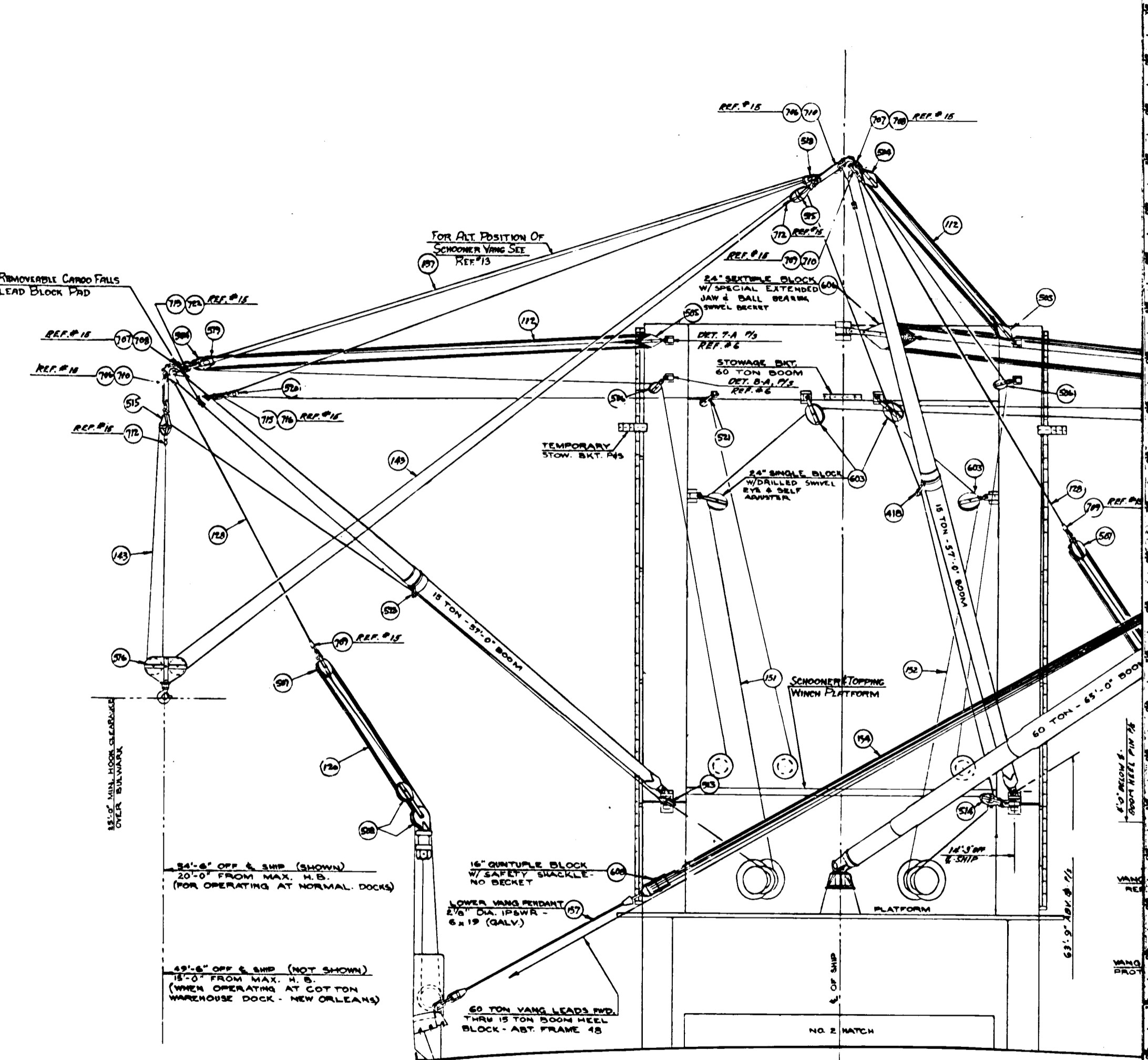
**SECTION 9-A**  
 LOOKING AFT TO FRAME 72  
 15 TON BOOM RIGGED FOR BURTONING 3 TONS  
 60 TON BOOM RIGGED FOR SWINGING 60 TONS



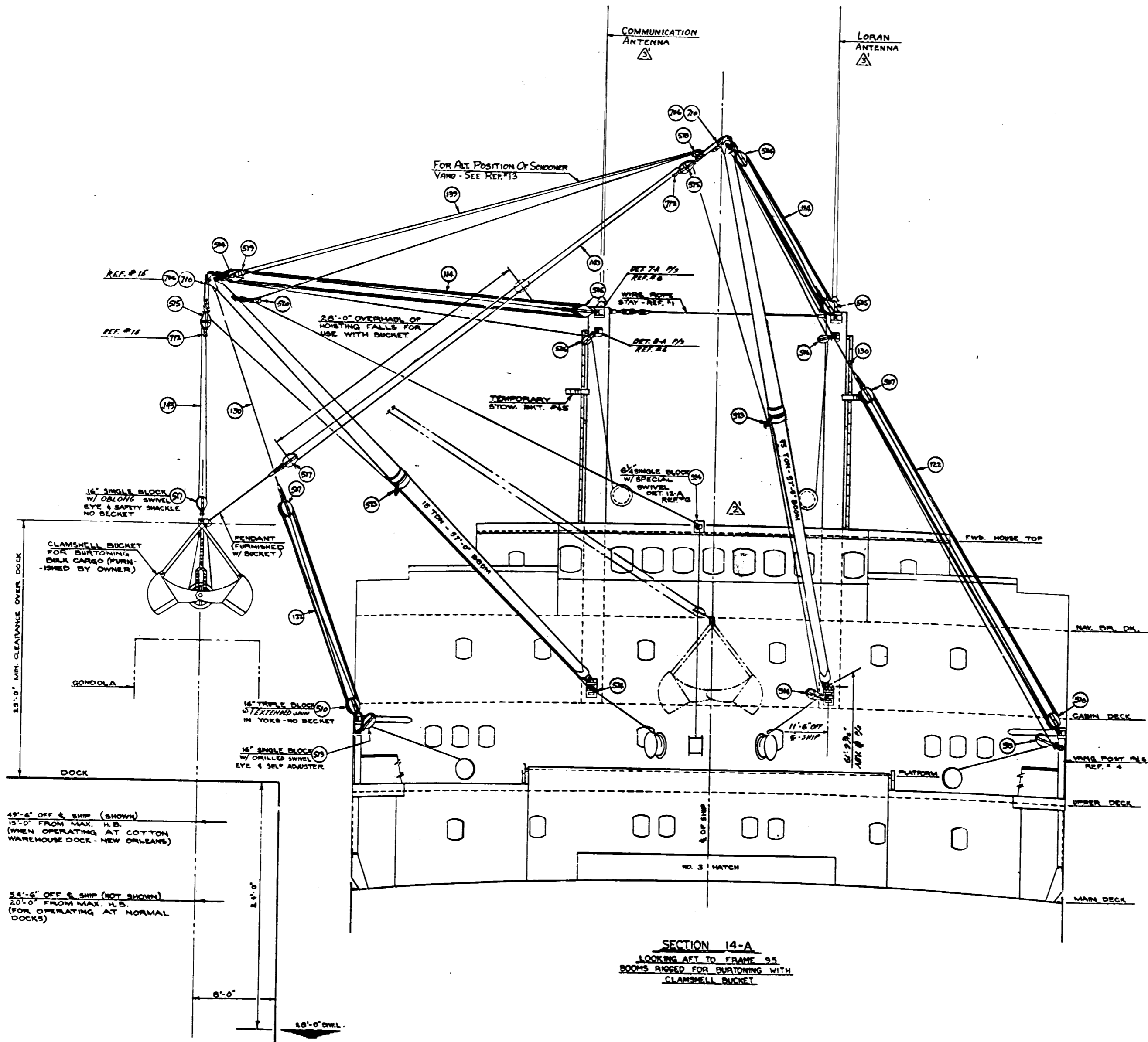
**SECTION 7-A**  
 LOOKING FWD TO FRAME 48  
 BOOMS RIGGED FOR BURTONING 5 TONS



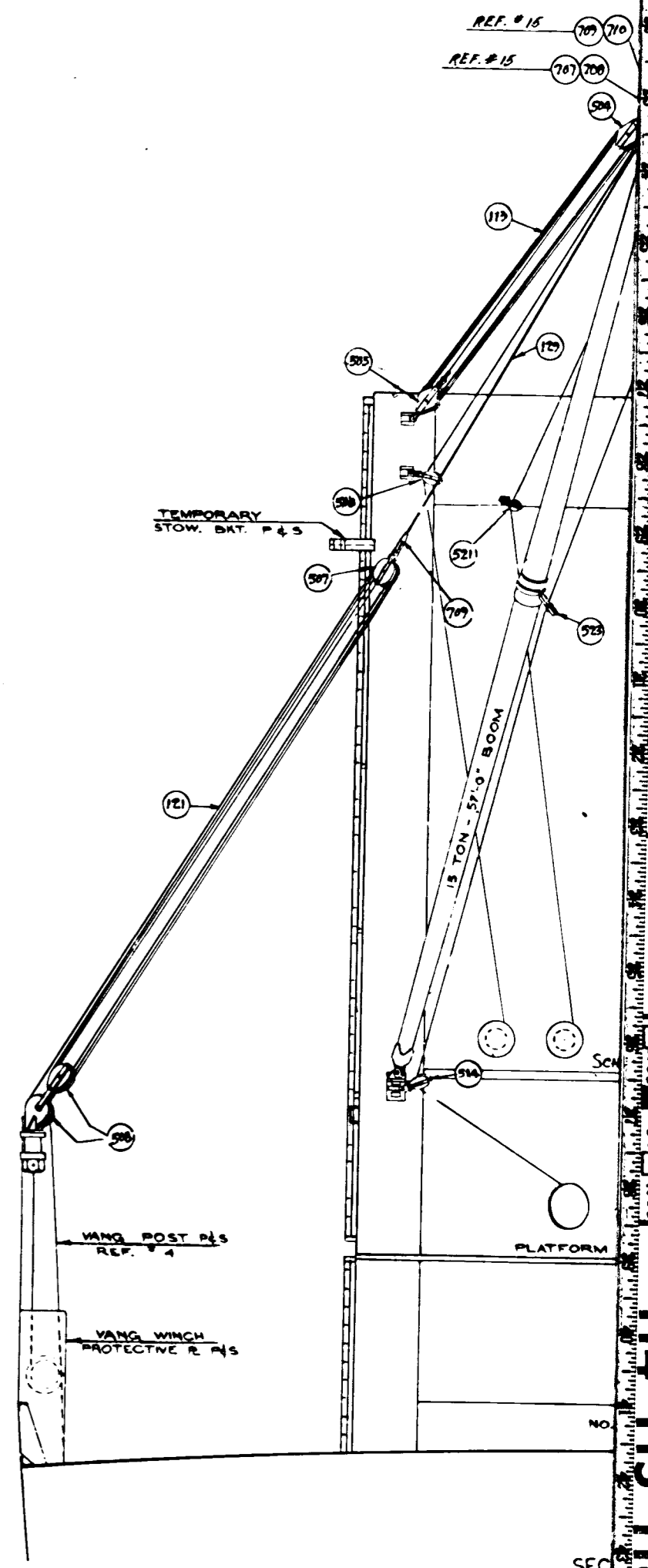
SECTION 12-A  
 LOOKING FWD TO FRAME 76  
 BOOMS RIGGED FOR BURTONING 5 TONS



SECTION 9-A  
 LOOKING AFT TO FRAME 72  
 15 TON BOOMS RIGGED FOR BURTONING 5 TONS  
 60 TON BOOM RIGGED FOR SWINGING 60 TONS



SECTION 14-A  
LOOKING AFT TO FRAME 95  
BOOMS RIGGED FOR BURTONING WITH  
CLAMSHELL BUCKET

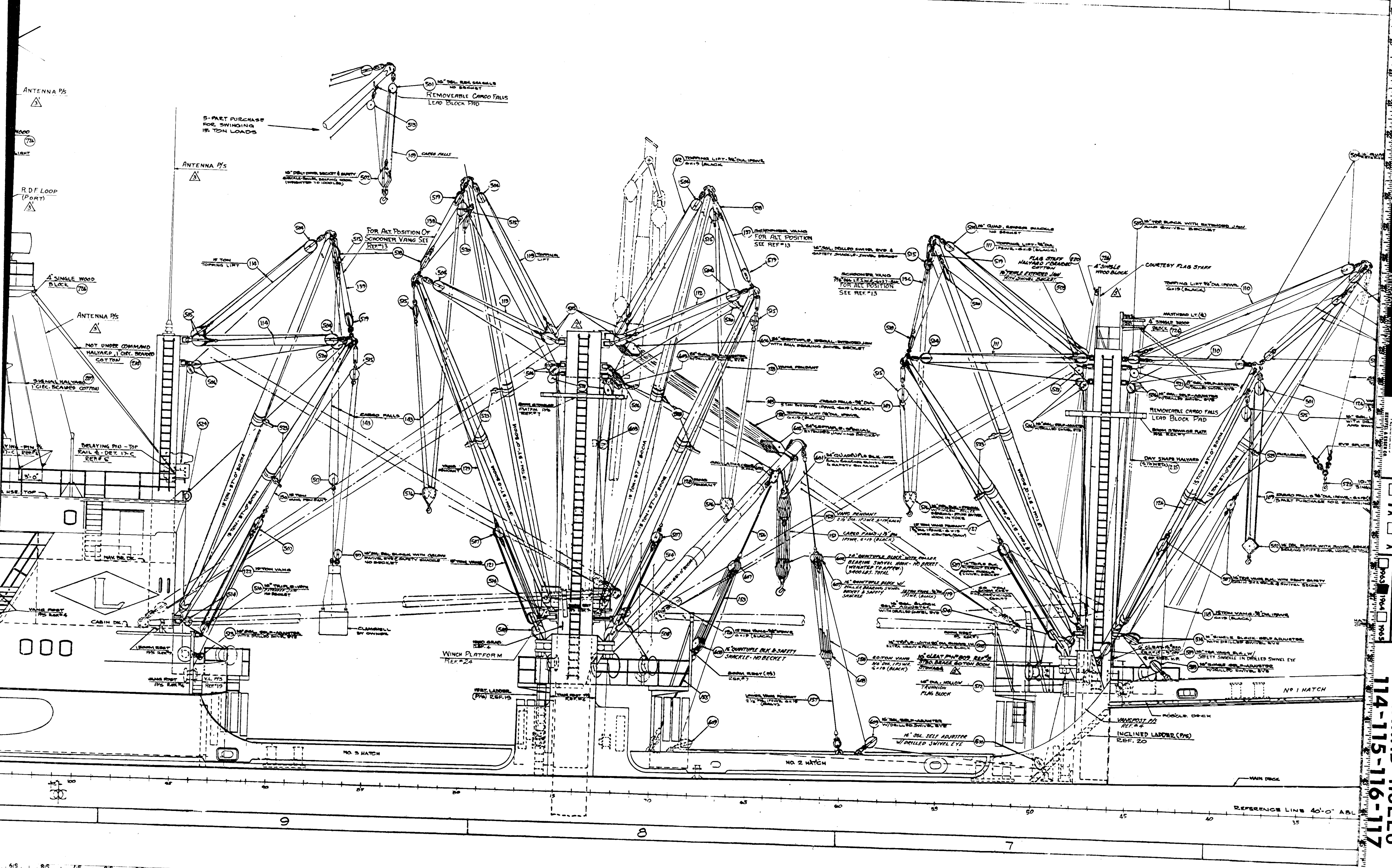


SECTION 14-B  
LOOKING AFT  
BOOMS RIGGED

114-115-116-117







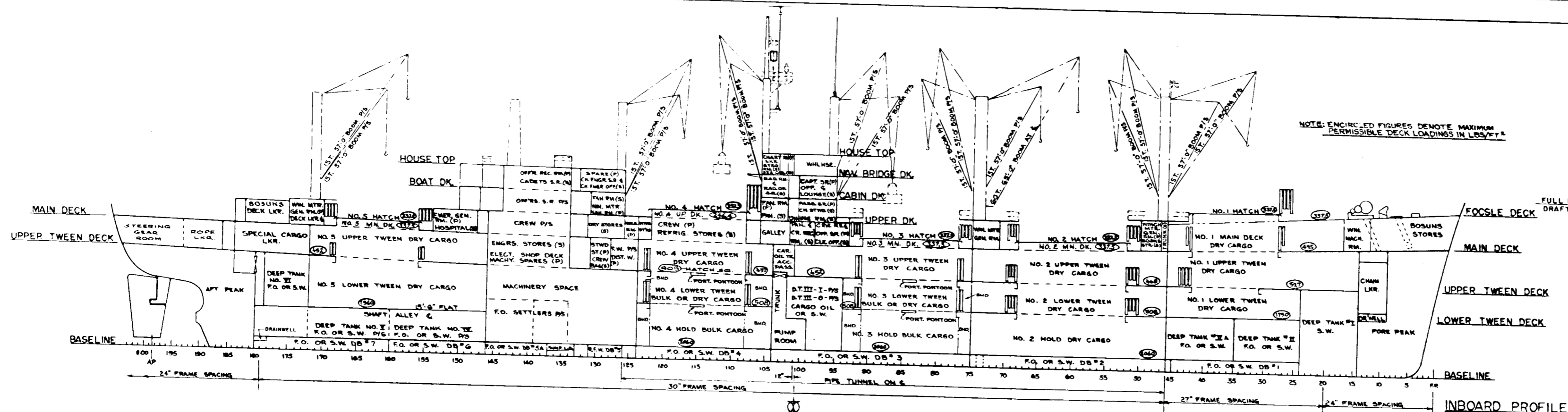
114-115-116-117  
 1964 1965











KEEL DRAFT	D.W. CARRYING CAPACITY	DISPLACEMENT IN	TONS PER INCH TOTAL	MOMENT TO TRIM ONE INCH	KEEL DRAFT
SALT WATER	SALT WATER	SALT WATER	SALT WATER	FT.-TONS	SALT WATER
30	11000	17000	57.0	1400	30
29			56.0		29
28	10000	16000	55.0	1300	28
27			54.0		27
26	9000	15000	53.0	1200	26
25			52.0		25
24	8000	14000	51.0	1100	24
23			50.0		23
22	7000	13000	49.0	1000	22
21			48.0		21
20	6000	12000	47.0	900	20
19			46.0		19
18	5000	11000	45.0	800	18
17			44.0		17
16	4000	10000	43.0	700	16
15			42.0		15
14	3000	9000	41.0	600	14
13			40.0		13
12	2000	8000	39.0	500	12
11	1000	7000	38.0	400	11
10	0	6000	37.0	300	10

FT. AFT FR. 99		220	200	180	160	140	120	100	80	60	40	20	0	20	40	60	80	100	120	140	160	180	200	220	FT. FWD FR. 99	
29'-0"	FWD	-5.6	-4.9	-4.2	-3.4	-2.7	-1.9	-1.2	-0.4	0.3	1.0	2.0	0	2.0	4.0	6.0	8.0	10.0	12.0	14.0	16.0	18.0	20.0	22.0	29'-0"	AFT
19'-0"	FWD	-7.8	-6.9	-6.0	-5.1	-4.2	-3.2	-2.3	-1.4	-0.5	0.5	1.4	2.3	3.3	4.2	5.1	6.1	7.0	7.9	8.8	9.8	10.7	11.6	12.5	19'-0"	AFT
DRAFT		+11.3	+10.4	+9.6	+8.7	+7.8	+6.9	+6.1	+5.2	+4.3	+3.4	+2.5	+1.7	+0.8	-0.1	-1.0	-1.8	-2.7	-3.6	-4.4	-5.3	-6.2	-7.1	-7.9	DRAFT	

TRIM TABLE NOTES: 1. THE ABOVE TABLE SHOWS CORRECTIONS IN INCHES TO DRAFT FORWARD AND AFT FOR EACH 100 TONS LOADED ANY DISTANCE FROM FRAME 99. 2. THE CORRECTIONS HAVE BEEN COMPUTED FOR THE TWO DRAFTS TO ALLOW INTERPOLATION. IN PRACTICE IT WILL BE ACCURATE ENOUGH TO USE THE TABLE NEAREST THE SHIP'S DRAFT. 3. WHEN DISCHARGING, USE THE TABLE AS FOR LOADING AND REVERSE THE PLUS AND MINUS SIGNS.

PROBLEM: FIND THE CHANGE IN DRAFT READINGS AFTER LOADING 100 TONS IN NO. 1 MAIN DECK (160 FT. FWD OF FRAME 99). SOLUTION: INITIAL DRAFT FWD. 29'-0", AFT 29'-0" CORRECTION +8.5", -3.8" NEW DRAFT 29'-8 1/2", 28'-8 1/2"

CARGO OIL OR S.W. BALLAST						
COMPARTMENT	FRAMES	GALLONS 100%	CARGO OIL TONS 98%	S.W. BALL. TONS 100%	VCG ABV. MLD. B.L.	LCG FROM FR. 99
DT. NO. MC-P	94-104	88535	280.0	338.2	18.42	0.55 F
DT. NO. MC-S	94-104	91915	301.1	351.1	18.46	0.56 F
DT. NO. MC-O	94-104	74424	233.7	284.3	18.01	0.00
DT. NO. MC-S	94-104	74424	233.7	284.3	18.01	0.00
TOTAL		329298	1078.5	1257.9	18.25	0.33 F

DRY CARGO						
COMPARTMENT	FRAMES	CAPACITY-FT³ GRAIN	BALE	VCG ABV. MLD. B.L.	LCG FROM FR. 99	
NO. 1						
LOWER TWEEN	24-46	16990	14553	25.81	153.80 F	
UPPER TWEEN	14-46	29135	25715	38.09	162.48 F	
MAIN DECK	17-46	32871	31100	50.42	162.34 F	
WEATHER DK. HATCH	26-42	1161	1031	57.03	157.25 F	
TOTAL		80057	72399	40.84	160.52 F	
NO. 2						
HOLD	46-75	58385	54313	12.84	92.32 F	
LOWER TWEEN	46-75	45379	41232	25.72	93.84 F	
UPPER TWEEN	46-75	43584	46345	37.30	95.46 F	
WEATHER DK. HATCH	52-68	2524	2295	44.99	97.50 F	
TOTAL		156072	144183	24.90	93.85 F	
NO. 3						
HOLD	75-94	48436	43668	12.37	35.97 F	
LOWER TWEEN	75-94	36607	31363	25.84	36.13 F	
UPPER TWEEN	75-101	47318	43802	35.83	27.80 F	
WEATHER DK. HATCH	77-91	2208	2008	44.43	37.50 F	
TOTAL		134569	120841	25.30	33.13 F	
NO. 4						
HOLD	104-124	54141	45962	12.35	37.38 A	
LOWER TWEEN	104-124	36560	33768	25.89	37.60 A	
UPPER TWEEN	104-124	36442	33239	36.78	37.67 A	
MAIN DK. TRUNK	108-122	7481	7481	47.37	40.00 A	
WEATHER DK. HATCH	108-122	1232	1032	52.37	40.00 A	
TOTAL		135856	121482	24.84	37.69 A	
NO. 5						
LOWER TWEEN	146-172	57346	51644	25.11	147.59 A	
UPPER TWEEN	146-172	44924	41337	38.83	148.82 A	
WEATHER DK. HATCH	156-168	1760	1588	46.24	157.20 A	
TOTAL		104030	94569	31.39	148.31 A	
GRAND TOTAL		610584	553474	28.16	18.58 F	

S.W. BALLAST					
COMPARTMENT	FRAMES	TONS 100% CAP	VCG ABV. MLD. B.L.	LCG FROM FR. 99	
FORE PEAK	57PM-14	113.32	26.54	216.58 F	
AFT PEAK	180-57ERN	310.33	28.19	217.00 A	
DEEP TANK NO. 1	14-24	212.82	17.79	191.35 F	
TOTAL		637.04	24.45	3.24 A	

FRESH WATER					
COMPARTMENT	FRAMES	TONS 100% CAP	VCG ABV. MLD. B.L.	LCG FROM FR. 99	
F.W. TANK P	124-128	37.5	37.15	67.75 A	
F.W. TANK S	124-128	53.9	37.26	67.75 A	
DISTILLED WATER	124-128	23.2	37.63	67.75 A	
DB NO. 5-1S	125-131	21.6	2.21	77.72 A	
DB NO. 5-1S	125-131	21.6	2.21	77.72 A	
DB NO. 5-OS	125-133	34.3	2.46	77.25 A	
DB NO. 5-OS	125-133	34.3	2.46	77.25 A	
TOTAL		226.5	20.05	71.59 A	

FUEL OIL SETTLING					
COMPARTMENT	FRAMES	BARRELS 98% CAP	TONS 98% CAP	VCG ABV. MLD. B.L.	LCG FROM FR. 99
F.O. SETTLER FWD P	134-139	289.4	43.7	13.38	84.88 A
F.O. SETTLER FWD S	134-139	276.9	41.7	13.38	84.88 A
F.O. SETTLER AFT P	139-146	304.7	45.9	13.77	108.34 A
F.O. SETTLER AFT S	139-146	304.7	45.9	13.77	108.34 A
TOTAL		1175.7	177.2	13.58	101.09 A

FUEL OIL OR S.W. BALLAST						
COMPARTMENT	FRAMES	FUEL OIL BBL 98%	FUEL OIL TONS 98%	S.W. BALL. TONS 100%	VCG ABV. MLD. B.L.	LCG FROM FR. 99
DB NO. 1-P	24-46	262.3	39.6	42.9	2.56	153.21 F
DB NO. 1-S	24-46	262.3	39.6	42.9	2.56	153.21 F
DB NO. 2-P	46-75	301.3	43.5	47.5	2.40	90.52 F
DB NO. 2-S	46-75	301.3	43.5	47.5	2.40	90.52 F
DB NO. 3-AP	75-104	543.3	77.0	83.6	2.40	30.62 F
DB NO. 3-AS	75-104	543.3	77.0	83.6	2.40	30.62 F
DB NO. 3-OP	75-104	930.8	143.4	155.3	2.21	23.75 F
DB NO. 3-OS	75-104	930.8	143.4	155.3	2.21	23.75 F
DB NO. 4-AP	104-124	374.4	56.5	61.0	2.21	39.01 A
DB NO. 4-AS	104-124	374.4	56.5	61.0	2.21	39.01 A
DB NO. 4-OP	104-124	645.9	97.6	105.9	2.21	36.51 A
DB NO. 4-OS	104-124	645.9	97.6	105.9	2.21	36.51 A
DB NO. 5-AP	146-172	425.2	64.6	70.9	2.34	36.51 A
DB NO. 5-AS	146-172	425.2	64.6	70.9	2.34	36.51 A
DB NO. 5-OP	146-172	728.0	109.3	120.9	2.62	104.62 A
DB NO. 5-OS	146-172	728.0	109.3	120.9	2.62	104.62 A
DB NO. 6-P	172-180	341.4	51.5	55.9	2.43	133.52 A
DB NO. 6-S	172-180	341.4	51.5	55.9	2.43	133.52 A
DB NO. 7-P	160-172	414.3	62.4	67.7	2.51	71.01 A
DB NO. 7-S	160-172	414.3	62.4	67.7	2.51	71.01 A
DB NO. 8-AP	35-46	1060.3	159.3	174.8	12.72	168.58 F
DB NO. 8-AS	35-46	1060.3	159.3	174.8	12.72	168.58 F
DB NO. 8-OP	146-160	1160.3	174.0	189.9	10.45	144.16 F
DB NO. 8-OS	146-160	1160.3	174.0	189.9	10.45	144.16 F
DB NO. 9-P	160-172	1010.2	152.3	165.4	10.42	133.52 A
DB NO. 9-S	160-172	1010.2	152.3	165.4	10.42	133.52 A
DB NO. 10-P	172-180	317.2	46.9	51.2	10.59	164.85 A
DB NO. 10-S	172-180	317.2	46.9	51.2	10.59	164.85 A
TOTAL		17558.9	2648.7	2874.1	8.39	14.16 A

SPECIAL CARGO					
COMPARTMENT	FRAMES	CAPACITY-FT³ GRAIN	BALE	VCG ABV. MLD. B.L.	LCG FROM FR. 99
NO. 5					
UPPER TWEEN	172-182	12629	11526	40.61	194.00 A
TOTAL		12629	11526	40.61	194.00 A

LUBE OIL					
COMPARTMENT	FRAMES	GALLONS 100% CAP	TONS 100% CAP	VCG ABV. MLD. B.L.	LCG FROM FR. 99
GRAVITY TANKS & SLOTTED	134-137	245.3	34.4	6.20	92.0 A
STORAGE P	138-140	113	16.1	6.66	100.0 A
STORAGE S	134-136	1862	264.7	36.07	94.0 A
SETTLING S	134-136	1802	258.2	36.07	94.0 A
TOTAL		6230	21.4	46.00	90.95 A

DRY STORES					
COMPARTMENT	FRAMES	NET FT.³	VCG ABV. MLD. B.L.	LCG FROM FR. 99	
MAIN DECK					
BOSUNS STORES	57PM-14	275.7	52.98	216.95 F	
STEWARDS STORES	122-124	77.3	47.54	60.00 A	
HAND LING RM	124-126	53.5	47.58	65.40 A	
SOILED LINEN	124-128	37.4	47.76	69.28 A	
DRY STORES	128-129	13.3	47.68	73.52 A	
CLEAN LINEN	128-131	82.6	47.88	76.55 A	
BOSUNS STORES	46-50	117.0	49.63	127.50 F	
UPPER TWEEN DK					
STEWARDS STORES	128-131	160.3	37.71	77.05 A	
BOSUNS STORES	187-192	85.8	41.47	220.25 A	
TOTAL		10258	47.25	16.01 F	

REFRIGERATED STORES					
COMPARTMENT	FRAMES	NET FT.³	VCG ABV. MLD. B.L.	LCG FROM FR. 99	
MAIN DECK					
FROZEN FOODS	108-111	372	46.89	26.38 A	
FRUIT RM	108-113	872	47.27	35.47 A	
DAIRY	111-113	489	46.95	35.68 A	
FRUIT & VEG	114-123	1415	47.06	49.80 A	
MEAT & FISH	114-123	1041	47.65	51.86 A	
TOTAL		4189	47.23	42.96 A	

114-115-116-117





MIN. BREAKING STRENGTH IN LONG TONS	51.9
AD LONG TONS	62.5
	62.5
	21.3
	3.3
	3.7
	3.1
	1.7
	14.9
	106.3

ROPE LIST

PC NO	NO REQ	NAME & LOCATION	MATERIAL	LENGTH		END CONNECTIONS	CONNECTING REFERENCE	DETAIL REFERENCE NO.	WORKING LOAD IN LONG TONS	MIN. BREAKING STRENGTH IN TONS
				BETWEEN PULLS	ROPE TOTAL LENGTH FOR ORDERING					
				15 TON BOOM						
101	2	CARGO HOIST - HATCH NO 1	3/4" DIA. IPSWR-6X19(BLACK)FC	221'-0"	452'	1/8" LOOP SPliced IN ONE END W/SAFETY SHACKLE - SAME END	18-1-4		4.1	21.3
102	2		2(FWD)	226'-0"	457'					
103	2		2(AFT)	231'-0"	462'					
104	2		3(FWD)	236'-0"	467'					
105	2		3(AFT)	241'-0"	472'					
106	2		4(FWD)	246'-0"	477'					
107	2		4(AFT)	251'-0"	482'					
108	2		5	256'-0"	487'					
109	2	CARGO HOIST (SWINGING RIG)		673'-0"	1346'				3.4	
110	2	TOPPING LIFT - HATCH NO 1	1/2" DIA. IPSWR-6X19 WIRE CORE (GALV)	560'-0"	1120'	ONE END SPliced TO BECKET OF BLOCK	18-1-6	505	3.9	
111	2		2(FWD)	561'-0"	1121'					
112	2		2(AFT)	562'-0"	1122'					
113	2		3(FWD)	563'-0"	1123'					
114	2		3(AFT)	564'-0"	1124'					
115	2		4(FWD)	565'-0"	1125'					
116	2		4(AFT)	566'-0"	1126'					
117	2		5	567'-0"	1127'				4.2	
118	2	VANG PURCHASE	1	253'-0"	474'			507	2.7	
119	2		2(FWD)	251'-0"	470'				2.6	
120	2		2(AFT)	249'-0"	466'				2	
121	2		3(FWD)	270'-0"	540'				2	
122	2		3(AFT)	270'-0"	540'				1.8	
123	2		4(FWD)	270'-0"	540'				2.2	
124	2		4(AFT)	270'-0"	540'				1.8	
125	2		5	197'-0"	402'				2.3	
126	2	VANG PENDANT	1	1 1/2" DIA. IPSWR-6X19 WIRE CORE (GALV)	37'-0"	74'	CLOSED SOCKET BOTH ENDS WITH SAFETY SHACKLE ONE END	18-1-4	18.9	93.3
127	2		2(FWD)	38'-0"	76'				18	93.3
128	2		2(AFT)	37'-0"	74'				14.1	66.8
129	2		3(FWD)	37'-0"	74'				14.1	
130	2		3(AFT)	35'-0"	70'				12.4	
131	2		4(FWD)	36'-0"	72'				15.5	
132	2	-LOWER-	4(AFT)	11'-0"	22'				12.5	
133	2	-UPPER-	4(AFT)	13'-0"	26'				14.1	
134	2		5	36'-0"	72'				16.7	93.3
135	1	SCHOONER VANG	1	1/2" DIA. IPSWR-6X19 WIRE CORE (GALV)	297'-0"	594'	ONE END SPliced TO BECKET OF BLOCK	18-1-6	510	0.6
136	1		2(FWD)	297'-0"	594'					
137	1		2(AFT)	304'-0"	608'					
138	1		3(FWD)	304'-0"	608'					
139	1		3(AFT)	308'-0"	616'					
140	1		4(FWD)	285'-0"	570'					
141	1		4(AFT)	286'-0"	572'					
142	1		5	300'-0"	600'					
143	6	CARGO HOIST (5-TON BUCKINGS)	3/4" DIA. IPSWR-6X19 (BLACK)FC	350'-0"	700'	1/8" LOOP SPliced IN ONE END W/SAFETY SHACKLE - SAME END	18-1-4		4.1	21.3

SUMMARY OF QUANTITIES FOR ORDERING - FOR ONE (1) SHIP

DIA.	TYPE	TYPE CORE	CONSTRUCTION	FINISH	LENGTH	MINIMUM STRENGTH IN LONG TONS
1/4"	IPSWR	FIBER CORE	6X19	BLACK	231 FT	21.3
1/2"					28	
3/4"					22,375	21.3
1 1/8"					2,401	4.1
1 3/8"			6X24		793	10.6
5/8"			6X19	GALV.	152'-0"	14.1
1 1/4"	IPSWR	FIBER CORE	6X19	GALV.	17 FT	5.1
1 3/8"	IPSWR	FIBER CORE	6X19	GALV.	38 FT	6.2
1 5/8"					346	86
1 3/4"		WIRE CORE			230	23
2 1/8"		FIBER CORE			70	14
1 1/2"	STEEL		1X7	GALV	100'	
7/16"	IPSWR	FIBER CORE	6X37	BLACK	2,406 FT	
3/16"				BETHANIZED	40 FT	

- ALL FIBER ROPE OF BEST COMMERCE
- ALL WIRE ROPE BE TREATED WITH MARLINE
- ALL WIRE ROPE SERVED WITH MARLINE
- ALL WIRE ROPE IN ACCORDANCE WITH NECESSARY CERT
- EXACT LENGTH OF
- THE TOPPING LIFT SUFFICIENT LENGTH (7) SEVEN TURNS
- ALL WIRE ROPE LENGTHS TO BE WIRE ROPE LIST
- ALL FLAG & SIGNAL SNAP HOOKS AT MILD STEEL RESIST MIL-R-5817.
- THE LENGTH OF CARGO HEAVY LIFT SHALL OPERATION WITH SUFFICIENT LENGTH ON THE DRUM.

60 TON BOOM

151	1	CARGO HOIST	1/2" DIA. IPSWR-6X19(BLACK)	1269'-0"	2538'	ONE END SPliced TO BECKET OF BLOCK	18-1-6	601	7.5	47.3
152	1	TOPPING LIFT		1124'-0"	2248'			606	8.6	47.3
153	1	VANG PURCHASE (PORT SIDE)	3/4" DIA. IPSWR-6X19(BLACK)	746'-0"	1492'			607	3.6	21.3
154	1	VANG PURCHASE (STBD SIDE)		746'-0"	1492'			607	3.6	21.3
155	1	LOWER VANG PENDANT (PORT SIDE)	2 1/2" DIA. IPSWR-6X19 (GALV)	5'-0"	10'	CLOSED SOCKET BOTH ENDS, WITH SAFETY SHACKLE ONE END	18-1-4	754	28.9	144.7
156	1	UPPER VANG PENDANT (PORT SIDE)		35'-0"	70'	OPEN SOCKET ONE END		754		
157	1	LOWER VANG PENDANT (STBD SIDE)		5'-0"	10'	CLOSED SOCKET OTHER END		754		
158	1	UPPER VANG PENDANT (STBD SIDE)		35'-0"	70'	CLOSED SOCKET BOTH ENDS WITH SAFETY SHACKLE ONE END		754		
159	1	VERTICAL STOWAGE	2 1/4" CIRC. MANILA ROPE	60'-0"	120'	ONE END SPliced TO BECKET OF BLOCK	18-1-4	47-1-8	8-A	

- LIST OF SAFETY DEVICES
- ACCOMMODATION LADDER ARRGT.
- CRANE, DAVITS ARRGT. & DETAILS
- JACK & ENSIGN STAFFS
- BOOM STOWAGE
- CARGO HATCH COVERS EMERGEN
- BLOCK LIST
- LIST OF TURNBUCKLES, SOCKETS
- RIGGING ARRGT - SECTIONS AFT
- RIGGING ARRGT - SECTIONS FOR
- RIGGING ARRGT - ELEVATION
- RIGGING ARRGT - PLAN
- RINGPOSTS & TRUSSES AFT
- RINGPOSTS & TRUSSES FORWARD

ROPE LIST

PC. NO.	NO. REQ.	NAME & LOCATION	MATERIAL	DESCRIPTION			CONNECTING REFERENCE		DETAIL REFERENCE NO.		WORKING LOAD IN LONG TONS	MIN. BREAKING STRENGTH IN LONG TONS
				LENGTH		END CONNECTIONS	BETH. PLAN NO.	PC. NO.	BETH. PLAN NO.	DETAIL NO.		
				BETWEEN PULLS	ROPE TOTAL LENGTH FOR ORDERING							
MISCELLANEOUS												
172	1	KINGPOST STAY - FRAME 96	1 1/2" DIA. IPSWR - 6x19 (GALV)	16'-0"	PULL BETWEEN SOCKETS	15'-7 1/2"	17'	18-1-4	-57-2		51.9	
173	1	KINGPOST STAY - FRAME 126	1 3/8"	16'-0"		15'-7 1/2"	17'	18-1-4	-57-3		62.5	
174	1	KINGPOST STAY - FRAME 171	1 3/8"	20'-8 1/2"		19'-4 1/2"	21'	18-1-4	-57-3		62.5	
175	1	EMERG. HATCH HANDLING PENDANT HATCH 1/2	3/4" DIA. IPSWR - 6x19 (BLACK)	60'-0"	PULL BETWEEN THIMBLES	68'-0"	68'	18-1-4	777	16-2-3 15-A	4.5 21.3	
176	1	TACKLE 3445		85'-0"		93'-0"	93'	18-1-4	777	16-2-3 15-A	3.3	
177	2	SLING LEGS FWD		15'-0"		23'-0"	46'	18-1-4	777	16-2-3 14-E	3.7	
178	2	AFT		36'-0"		44'-0"	88'	18-1-4	777	16-2-3 14-E	3.1	
179	2	WIRE TIE 3		10'-0"		18'-0"	36'	18-1-4	777	16-2-3 14-E	1.7	
180	8	PONTOON SLING	5/8" DIA GALV.	11'-0"		19'-0"	152'-0"	18-1-4	779	16-2-3 14-A		14.9
181												
182	1	TOWLINE	1 1/2" DIA. IPSWR - 6x24 (BLACK)	130 PATIAMS - PULL OF LOOP TO FULL OF SOCKET		793'-0"	793'	18-1-4	781			106.3
183	9	HAWSERS	8" CIRC. MANILA ROPE	90 PATIAMS BETWEEN PULL OF LOOPS		562'	5058'					
184	6	HEAVING LINES	1 1/2" CIRC. TARRED MANILA ROPE	15 PATIAMS FROM MONKEY FIT TO SUP. OF FRAME		98'-0"	588'					
185	4	JACK & ENSIGN STAFF HALYARDS	1" CIRC. BRAIDED COTTON - SEE GEN. NOTE # 8	26'-0"	BETWEEN PULL OF SNAPS	29'-6"	110'	18-1-4	805	17-1-11		
186	1	BOSN. STORES DAVIT FALLS	2" CIRC. MANILA ROPE	65'-0"	PULL OF BECKET TO END OF ROPE	67'	67'	18-1-4	711	17-1-9 5-A		
187	2	BOSN. STORES DAVIT VANGS		81'-0"	PULL BETWEEN SHACKLES	10'-0"	20'	18-1-4	791 & 792		G-C	
188	2	DRY STORES CRANE VANGS		18'-0"	PULL OF SHACKLE TO END OF ROPE	20'-0"	40'	18-1-4	791 & 792		G-C	
189	2	F.O. HOSE DAVIT FALLS	3" CIRC. MANILA ROPE	15'-0"	PULL OF BECKET TO END OF ROPE	16'-0"	32'	18-1-4	713		9-A	
190	4	F.O. HOSE DAVIT VANGS	1/2" DIA. IPSWR - 6x19 (BLACK)	81'-0"	PULL OF BECKET TO END OF ROPE	7'-0"	28'	18-1-4	794 & 795		9-E	
191	1	DRY STORES DAVIT FALLS	2" CIRC. MANILA ROPE	208'-0"	PULL OF BECKET TO END OF ROPE	216'-0"	210'	18-1-4	714		11-B	
192	2	DRY STORE DAVIT VANGS		81'-0"	PULL BETWEEN SHACKLES	10'-6"	21'	18-1-4	791 & 792		G-C	
193	4	F.O. HOSE DAVIT VANG	1 1/2" CIRC. MANILA ROPE	16'-0"	LANYARD	16'-0"	64'	18-1-4	796		9-E	
194	1	DAVITS STORAGE LASHING		25'-0"	TO CUT	25'-0"	25'	18-1-4		17-1-9		
195	2	ACCOMM. LADDER DAVITS - VANG		18'-0"	PULL OF HOOK TO END OF ROPE	20'-0"	40'	18-1-4	802 & 801	16-4-1	G-A	
196	2	LIFE LINE	3/4" CIRC. MANILA ROPE W/ PLASTIC COVERING	175'-0"	TO CUT	200'-0"	401'	18-1-4	803 & 804	16-4-1		
197	2	DAVIT FALLS	1/2" DIA. W/ IMPROVED PLOW STEEL FIBER CORE 6x37 CONSTRUCTION BLACK	115'-0"	PULL OF BECKET TO END OF ROPE	115'-0"	251'	18-1-4		16-4-1		
198	6	HANDY BILLY	1 1/2" CIRC. MANILA ROPE	53'-0"	PULL OF BECKET TO END OF ROPE	55'-0"	330'	18-1-4		16-4-1		
199	1	LASHING (WATER LIGHT TO LIFE BUOY)	1 1/4" CIRC. MANILA ROPE	36'-0"	TO CUT 9 LOOPS	45'-0"	45'			94-0-1		
200	2	RETRIEVING LINE	1 1/4" CIRC. MANILA ROPE	90'-0"	PULL OF LOOP TO END OF ROPE	96'-0"	192'			94-0-1		
201												
202												
203												
204												
205												
206												
207	4	SIGNAL HALYARD FR 106	1" CIRC. BRAIDED COTTON - SEE GEN. NOTE # 8	109'-0"	BETW. PULL OF SNAPS	110'-0"	440'			18-1-2		
208												
209												
210												
211	2	BROADCAST ROVg ANTENNA DOWN HALL	2 1/2" CIRC. MANILA ROPE	41'-0"	PULL OF THIMBLE TO END OF ROPE	43'-0"	86'			17-1-6 18-D		
212												
213												
214	1	NOT UNDER COMMAND HALYARD	1" CIRC. BRAIDED COTTON - SEE GEN. NOTE # 8	72'-0"	BETW. PULL OF SNAPS	73'-0"	73'			18-1-2		
215	1	DAY SHAPE HALYARD		132'-0"		133'-0"	133'					
216	1	SEIZING WIRE	1/2" DIA. 1 X 7 STEEL (GALV)	100'		100'	100'					
217	1	AUX. FOR ROCKET LINE THROW APPLIANCE	3" CIRC. MANILA ROPE	1500'-0"		1500'-0"	1500'					
218	1	SLING FOR PROPELLER WARNING SIGN	5/8" DIA. IPSWR (6x37) FIBER CORE RETAINABLE	TO CUT 4 SLINGS		40'-0"	40'-0"			28-3-1 SHT. 32		
219	1	HOUSE LINE # 2 (FOR SEIZING STAYS & SHEERINGS)	TARRED HEMP	100'		100'	100'					
220	1	FLAG STAFF HALYARD	1" CIRC. BRAIDED COTTON - SEE GEN. NOTE # 8	105'-0"	BETWEEN PULL OF SNAPS	104'-0"	104'-0"			18-1-2		
221												
222												
223												
224												
225												
226												
227												
228												
229												
230												
231												
232												
233												
234												
235												
236												
237												
238												
239												
240												
241												
242												
243												
244												
245												
246												

△ △

△

△

PC NO	NO REQ	NAM
101	2	CARGO
102	2	
103	2	
104	2	
105	2	
106	2	
107	2	
108	2	
109	2	CARGO
110	2	TOPPING
111	2	
112	2	
113	2	
114	2	
115	2	
116	2	
117	2	
118	2	VANG PUR
119	2	
120	2	
121	2	
122	2	
123	2	
124	2	
125	2	
126	2	VANG PEN
127	2	
128	2	
129	2	
130	2	
131	2	
132	2	
133	2	
134	2	
135	1	SCHOONIE
136	1	
137	1	
138	1	
139	1	
140	1	
141	1	
142	1	
143	6	CARGO HOIS

151	1	CARGO
152	1	TOPPING
153	1	VANG PUR
154	1	VANG PUR
155	1	LOWER V
156	1	UPPER V
157	1	LOWER V
158	1	UPPER V
159	1	VERTICAL
160		
161		
162		
163		
164		
165		
166		
167		
168		
169		
170		
171		





BLOCK LIST

PC NO.	NO. REQ.	LOCATION OF BLOCKS	BLOCK DESCRIPTION										RESULTANT SAFE WORKING LOAD IN LONG TONS	RESULTANT PROOF TEST LOAD IN LONG TONS	CONNECTING REFERENCE		REMARKS
			SHELL		SHEAVE		BLOCK CONNECTION		REMARKS		PAGE	BLOCK NO.			BETH. PLANNING	PC NO.	
			SIZE	MATERIAL	NO OF SHEAVES (O.S.)	DIA. FOR ROPE SIZE (O.S.)	MATERIAL	BUSHING	BECKET	REMARKS							
<b>15 TON BOOM</b>																	
501	2	CARGO FALLS - UPPER	-	STEEL RT.	2	16	3/4 DIA	CAST STL.	TIMKEN ROLLER BEARING	NO	REVERSE SHACKLE & LINK	74	6092	13	26	17-1-6	711
502	2	CARGO FALLS - LOWER	-		2	16				YES	TIMKEN ROLLER BEARING HOOK & SWIVEL BECKET	73	6082	15	30		712
503	4	YANG LEAD - YANG POST NO. 4 HATCH FWD ON BULWARK NO. 1 HATCH	-		1	16			GROOVED BRONZE PRESS. GREASE LUB.	NO	DRILLED SWIVEL EYE WITH SELF ADJUSTER FTG.	66 175	6012 & 6102	5	10		DET 12-A
504	16	TOPPING LIFT AT BOOM	-		4	16				NO	REVERSE SAFETY CHAIN SHACKLE	74	6091	29	49		708
505	16	TOPPING LIFT AT KINGPOST	-		3	16				YES	EXTENDED JAW & SWIVEL BECKET	74	SIM TO 6093	25	45	17-1-7	190
506	16	TOPPING LIFT LEAD AT KINGPOST	-		1	16				NO	DRILLED SWIVEL EYE WITH SELF ADJUSTER FTG.	66 175	6012 & 6102P	7	14	17-1-17	138
507	16	YANG BLOCK - UPPER	-		3	16				YES	FRONT SAFETY CHAIN SHACKLE & SWIVEL BECKET	24	4033N	19	38	17-1-6	709
508	8	YANG BLOCK - LOWER - AFT END NO. 2 & 3 HATCHES	-		3	16				NO	SPECIAL FLAG BLOCK WITH 20" DIA SHEAVE	-	-	16	32		DET 16-D
509	2	YANG BLOCK - LOWER - AFT END NO. 1 HATCH	-		3	16				NO	SAFETY ANCHOR SHACKLE IN DRILLED SWIVEL EYE	24	4033 Q	17	34		DET 7-A
510	4	YANG BLOCK - LOWER - AFT END NO. 3 & 4 HATCHES	-		3	16				NO	EXTENDED JAW	74	6093	14	28		DET 13-A
511	2	YANG BLOCK - LOWER - AFT END NO. 4 HATCH	-		3	16				NO	FRONT SAFETY CHAIN SHACKLE	24	4033 N	11	22		709
512	2	YANG LEAD - YANG POST FWD END NO. 2 HATCH	-		1	16				NO	HOLLOW TRINIAM FLAG BLOCK	35	4155	2	4		DET 16-D
513	8	YANG LEAD - AFT END NO. 2 & 3 FWD & AFT END NO. 4 HATCHES	-		1	16				NO	DRILLED SWIVEL EYE WITH SELF ADJUSTER FTG.	66 175	6094 & 6102P	3	6		DET 12-A & 12-A V-B
514	16	CARGO FALL LEAD - AT BOOM NEEL	-		1	16			TIMKEN ROLLER BEARING	NO	DRILLED SWIVEL EYE WITH SELF ADJUSTER FTG.	66 175	6094 & 6102	8	16	17-1-7	100
515	16	CARGO FALL LEAD BLOCK ON BOOM USED AS UPPER BURTONING BLOCK	-	CAST STL.	1	16				YES	DRILLED SWIVEL EYE W/ SAFETY CHAIN SHACKLE	65	6001 Z	8	16	17-1-6	704
516	3	BURTONING BLOCK LOWER	-	STEEL RT.	2	16				NO	SPECIAL BLK. W/ ROLLER BEARING SWIVEL HOOK	-	-	6	12		DET 9-A
517	8	CLAMSHELL RIG - LOWER	-	CAST STL.	1	16				NO	DRILLING SWIVEL EYE W/ SAFETY CHAIN SHACKLE & NON-TAPPING GUARD	65 167	6001 Y & 6022	6	12		DET 12-L
518	8	SCHOONER YANG BLK - BTW BOOMS	-	STEEL RT.	1	8	3/4 DIA		GROOVED BRONZE PRESS. GREASE LUB.	YES	FRONT SAFETY ANCHOR SHACKLE	22	4011M	2	4	17-1-6	714
519	8	SCHOONER YANG BLK - BTW BOOMS	-		1	8				NO	FRONT SAFETY ANCHOR SHACKLE	22	4011M	1	2		722
520	8	SCHOONER LEAD BLOCK ON BOOM	-		1	8				NO	DRILLED SWIVEL EYE & SAFETY ANCHOR SHACKLE	22	4011 Z	2	4		716
521	7	SCHOONER LEAD BLOCK AT KINGPOST	-		1	8				NO	DRILLED SWIVEL EYE W/ SELF ADJUSTER FTG.	22 166	4011 Y & 6013	2	4		716
522	8	SINGLE LINE BURTONING HOOK ASSEMBLY	-							NO	DRILLING SWIVEL EYE WITH SELF ADJUSTER FTG. WITH ROLLER BEARING	68	6031	-	-		DET 10-B
523	16	CARGO FALL FAIRLEAD	-	STEEL					BRONZE	-	FOR 18" O.D. BOOM	68	6031	-	-		DET 10-B
524	1	SCHOONER LEAD HSE FRONT FR 95	-		1	6	3/4 DIA	CAST STEEL	GROOVED BRONZE PRESS. GREASE LUB.	-	FOR SPECIAL SWIVEL BLOCK	45	SIM. 4231	-	-		DET 10-B
525	8	10 TON SEATTLE CARGO HOOK	-							-	SWIVEL EYE & EYE	-	-	10	EACH LEG 20	17-1-6	101

<b>60 TON BOOM</b>																	
PC NO.	NO. REQ.	LOCATION OF BLOCKS	SHELL	SHEAVE	BLOCK CONNECTION	REMARKS	PAGE	BLOCK NO.	RESULTANT SAFE WORKING LOAD IN LONG TONS	RESULTANT PROOF TEST LOAD IN LONG TONS	CONNECTING REFERENCE	REMARKS					
601	1	CARGO FALLS, UPPER BLOCK	-	STEEL RT.	4	24	1 1/2 DIA	CAST STL.	TIMKEN ROLLER BEARING	YES	BALL BEARING SWIVEL BECKET & SAFETY SHACKLE	74	6091	62	93	TMS DWG	611
602	1	CARGO FALLS, LOWER BLOCK	-	DO	5	24	1 1/2 DIA	DO	DO	NO	BALL BEARING SWIVEL HOOK	78	6094	63	93.5	18-1-5	151
603	4	TOPPING LIFT LEAD BLOCK	-	DO	1	24	1 1/2 DIA	DO	DO	NO	SELF-ADJUSTER, DRILLED SWIVEL EYE	78	6102	15	30	17-1-7	DET 11-A
604	1	CHUBB BLOCK, OSCILLATING	-	DO	1	24	1 1/2 DIA	DO	DO	NO	WITH BRASS BUSHES TO SUIT CURVE OF BOOM	78	SIM TO 6102	8	16		SKETCH P
605	1	TOPPING LIFT AT BOOM	-	DO	7	24	1 1/2 DIA	DO	TIMKEN ROLLER BEARING	NO	EXTENDED JAW	74	SIM TO 6094	106	159		SKETCH Q
606	1	TOPPING LIFT AT TRUSS	-	DO	6	24	1 1/2 DIA	DO	DO	YES	EXTENDED JAW W/ BALL BEARING SWIVEL BECKET	74	6094	94	141	17-1-7	DET 10-A
607	2	UPPER YANG BLOCK	-	DO	5	16	3/4 DIA	DO	GROOVED BRONZE PRESS. GREASE LUB.	YES	SAFETY ANCHOR SHACKLE AND ROLLER BEARING SWIVEL BECKET	24	4033	29	49	17-1-6	728
608	2	LOWER YANG BLOCK	-	DO	5	16	3/4 DIA	DO	DO	NO	FRONT SAFETY CHAIN SHACKLE	24	4033	27	47	17-1-6	728
609	2	YANG LEAD SWATCH BLOCK ON HSE	-	DO	1	16	3/4 DIA	DO	DO	NO	DRILLED SWIVEL EYE - SELF-ADJUSTER	27	4022	5	10	17-1-6	DET 14-A
610	2	YANG LEAD SWATCH BLOCK ON DECK	-	DO	1	16	3/4 DIA	DO	DO	NO	DRILLED SWIVEL EYE - SELF-ADJUSTER	27	4022	5	10	17-1-6	DET 14-A
611	1	CARGO FALLS YOKE	-							NO	W/PC NO. 601	4	3002K	62	124	17-1-6	DET 10-A
612	1	BOOM STORAGE BLOCK (AT BOOM)	6	WOOD	2	2 1/2" CIR.		CAST IRON	GRAPHITE BRONZE	YES	3/4" SAFETY CHAIN SHACKLE	4	3002K	62	124	17-1-6	DET 10-A
613	1	BOOM STORAGE BLOCK (AT TRUSS)	6	WOOD	3	2 1/2" CIR.		DO	DO	NO	3/4" SAFETY CHAIN SHACKLE	4	3003K	62	124	17-1-6	DET 10-A

<b>GENERAL</b>																	
13	ARRGT & FITTINGS FOR TOP MASTS & RADAR PLATFORM																
12	BOOM STORAGE																
11	ACCOMMODATION LADDER ARRGT, HANDLING & DETAILS																
10	CRANES, DAVIS ARRGT & DETAILS																
9	RIGGING FITTINGS - SHEET 1 OF 2																
8	CARGO HATCH COVERS EMERGENCY HANDLING ARRGT & DET																
7	RIGGING FITTINGS - SHEET 2 OF 2																
6	LIST OF TURNBUCKLES, SOCKETS & CLEATS, ETC.																
5	RIGGING ARRANGEMENT - SECTIONS - DET																
4	RIGGING ARRANGEMENT - SECTIONS - FWD																
3	RIGGING ARRANGEMENT - ELEVATION																
2	RIGGING ARRANGEMENT - PLAN																
1	WELDING DETAILS, BOOKLET (BETHLEHEM STANDARD)																

- ALL BLOCKS & FITTINGS SHALL BE DESIGNED FOR A FACTOR OF IN THE LIST.
- ALL WOOD SHELLS SHALL BE MADE OF ASH OR BIRCH, PROPER DOUBLE CROSS BOLTED WITH THE ENDS OF THE BOLTS COUNTERS.
- ALL CARGO HANDLING BLOCKS, SHACKLES & LINKS ARE TO BE MADE WORKING LOAD IN LONG TONS IN A CONSPICUOUS PLACE, WHERE ALL CARGO HANDLING BLOCKS, SHACKLES & LINKS ARE TO BE TEST CERTIFICATES ARE TO BE FURNISHED IN ACCORDANCE WITH REGISTERED CARGO GEAR.
- BLOCK MANUFACTURER SHALL COMPILER & FURNISH A BOOKLET OF LINKS, LUBRICATION ARRANGEMENTS, SPECIFICATION FOR ALL FOR ALL BLOCKS LISTED. THIS BOOKLET SHALL BE SUBMITTED TO THE MANUFACTURER'S REPRESENTATIVE.
- BLOCKS PC NOS 501, 502, 514, 515, 516 & 517 WILL HAVE A CLEAR OF 1/2". THE CLEAR OPENING SHALL BE A MIN. OF 3/2" FROM BY 1 1/2" WIDE MORTISE.
- PRESSURE GREASE FITTINGS SHALL BE MONEL, ALUMITE OR OF THE MANUFACTURER'S REPRESENTATIVE.
- TO ALL FERROUS PARTS OF THE BLOCKS EXCEPT ACTUAL ASSEMBLY.
- PC NO 705 IS TO BE A TARBAG SNATCH BLOCK, SUPPLIED W/ LOAD AS FOLLOWS: SHACKLE SAFE WORKING LOAD 1 1/4"

NO.	TITLE	REFERENCES
13	ARRGT & FITTINGS FOR TOP MASTS & RADAR PLATFORM	
12	BOOM STORAGE	
11	ACCOMMODATION LADDER ARRGT, HANDLING & DETAILS	
10	CRANES, DAVIS ARRGT & DETAILS	
9	RIGGING FITTINGS - SHEET 1 OF 2	
8	CARGO HATCH COVERS EMERGENCY HANDLING ARRGT & DET	
7	RIGGING FITTINGS - SHEET 2 OF 2	
6	LIST OF TURNBUCKLES, SOCKETS & CLEATS, ETC.	
5	RIGGING ARRANGEMENT - SECTIONS - DET	
4	RIGGING ARRANGEMENT - SECTIONS - FWD	
3	RIGGING ARRANGEMENT - ELEVATION	
2	RIGGING ARRANGEMENT - PLAN	
1	WELDING DETAILS, BOOKLET (BETHLEHEM STANDARD)	





