

DEY CARGO table with columns: COMPARTMENT, DECK, FRAMES, GRAIN CU FT, BALE CU FT. Lists cargo capacity for Main Deck, Upper Tween, Lower Tween, and various holds across different compartments.

REFRIGERATED CARGO table with columns: COMPARTMENT, DECK, FRAMES, NET CU FT. Lists capacity for refrigerated cargo on Main Deck, Upper Tween, Lower Tween, and Holds.

FUEL OIL & SALT WATER BALLAST table with columns: COMPARTMENT, DECK, FRAMES, BARRELS, TONS. Lists capacity for fuel oil and ballast in various compartments.

CARGO OIL table with columns: COMPARTMENT, DECK, FRAMES, TONS 100%, BBL 100%. Lists capacity for cargo oil.

PERMISSIBLE DECK LOADING and PERMISSIBLE HATCH COVER LOADING tables. Lists loading limits in pounds per square foot for different deck and hatch cover areas.

SHIPS STORES table with columns: COMPARTMENT, DECK, FRAMES, NET CU FT. Lists storage capacity for ship's stores.

DEY CARGO SUMMARY BY DECKS table with columns: DECK, GRAIN CU FT, BALE CU FT. Provides a summary of cargo capacity by deck.

DIESEL OIL table with columns: COMPARTMENT, DECK, FRAMES, GALLONS. Lists capacity for diesel oil.

LUBE OIL table with columns: COMPARTMENT, DECK, FRAMES, GALLONS. Lists capacity for lubricating oil.

FRESH WATER table with columns: COMPARTMENT, DECK, FRAMES, TONS 100%, GALS 100%. Lists capacity for fresh water.

HOTWELL TANKS table with columns: TANK, DECK, FRAMES, TONS FW 100%. Lists capacity for hotwell tanks.

TANK & HOLD CAPACITIES
DESIGN C4-S-64a
SHEET NO. 3 OF 19

POWER PLANT & SPEED

BOILERS - TWO BARCOCK & WILCOX - 47,500 LBS./HR. CRUISING S.H.T.E. 870 P.S.I. @ 910° F. MARINE OIL FIRED TYPE.
MAIN TURBINE (H.P. & L.P.) - ONE GENERAL ELECTRIC - 850 P.S.I. 900° F. 18000 H.P. NOMINAL (18750 H.P. MAX.) SINGLE PLANE IN LINE CROSS COMPOUND.
MAIN REDUCTION GEAR - ONE GENERAL ELECTRIC 97 K.P.M. @ 18000 S.H.P. SINGLE PLANE IN LINE DOUBLE HELICAL REDUCTION.
SPEED = 20.6 KNOTS.

PROPELLER

ONE - 4 BLADES - RIGHT HAUD - 22'-0" DIA. - EFFECTIVE PITCH = 23.87'

GENERATING PLANT

TURBO GENERATORS - TWO GENERAL ELECTRIC 1250 KW. 1500 V.A. 450V. 3PHASE 60 CY. 850 P.S.I. 900° F. 12000 P.M. 2.2" KG. VAC. ABSOL.

STEERING GEAR DATA

LOGSEWOOD MFG. CO. - ELECT. HYD. (DOUBLE RAM) STEERING GEAR.

DECK MACHINERY DATA

ANCHOR WINDLASS - ONE LOGSEWOOD MFG. CO. (ELECTED HYD.)
CAPSTAN - ONE SLAGIT CORP. (ELECT.)
CARGO WINCHES - EIGHTEEN LAKE SHORE, INC. SGL. DRUM ELECT. MOTOR DRIVEN TYPE.
CAERD WINCHES - ONE LAKE SHORE, INC. SGL. DRUM (HEAVY LIFT) ELECT. MOTOR DRIVEN TYPE.
TOPPING WINCHES - TWENTY-TWO LAKE SHORE, INC. SGL. DRUM ELECT. MOTOR DRIVEN TYPE.
WIND WINCHES - TWENTY-TWO LAKE SHORE, INC. SGL. DRUM ELECT. MOTOR DRIVEN TYPE.
SCHEDULED PLY WINCHES - ELEVEN LAKE SHORE, INC. SGL. DRUM ELECT. MOTOR DRIVEN TYPE.
COMBINATION CARGO WINCHES - TWO LAKE SHORE, INC. TRIPLE DRUM ELECT. MOTOR DRIVEN TYPE.
LIFEBOAT WINCHES - TWO WELIN DAVIT & BOAT COOP. (ELECT.)
ACCOMMODATION LOADER WINCHES - TWO LAKE SHORE, INC. (ELECT.)
COMBINATION - ONE REDWICK MACHINE WORKS INC. 100 LBS. CAPACITY (ELECT.)

LIFEBOAT & DAVIT DATA

TWO 30'-0" x 10'-0" x 4'-3 1/2" 178 PERSONS - CERTIFIED FOR 43 (HAND PROPELLED) LIFEBOATS.
TWO SETS WELIN DAVIT & BOAT COOP. - GRAVITY TYPE DAVITS.

REFRIGERATING PLANT

SHIPS STORES - CARRIER - TWO REBER SHITS - 5 TONS.
CARGO - CARRIER - SEVEN REBER SHITS - 14 TONS.
AIR CONDITIONING COMPRESSOR - CARRIER - ONE UNIT 34 TONS.
AIR CONDITIONING CHILLER - HEAT EX. INC. - 1 UNIT - 25 TONS.
AIR CONDITIONING CHILLER - HEAT EX. INC. - 1 UNIT - 37 TONS.

EMERGENCY DIESEL GENERATOR

ONE GENERAL MOTORS 100KW. 450V. 3PHASE 60CY. UNIT MODEL G150-E.

COMPLEMENT

DECK DEPARTMENT 18
ENGINE DEPARTMENT 14
STEWARDS DEPARTMENT 7
PASSENGERS 4
TOTAL 43

EQUIPMENT

2 STOCKLESS BOWSE ANCHORS EACH 10,340 LBS.
1 SPARE STOCKLESS BOWSE ANCHOR 10,340 LBS.
300 FATHOMS OF 2 1/2" DIA. CAST STEEL STOD LINK CHAIN.
140 FATHOMS OF 2" DIA. 6 X 24 WIRE ROPE.
2 HAWSEERS EACH 90 FATHOMS 7" CIRC. NYLON ROPE.
2 HAWSEERS EACH 90 FATHOMS 8" CIRC. MANILA ROPE.
ABC CLASSIFICATION A-1 S.F. 18/18/18/18.

PRINCIPAL CHARACTERISTICS

LENGTH OVERALL 544'-0"
LENGTH ON D.L.W.L. (27'-0" MLD) 521'-13 1/2"
LENGTH BETWEEN PERPENDICULARS 507'-0"
BREADTH MOLDED 75'-0"
DEPTH MOLDED TO MAIN DECK AT SIDE 42'-0"
DRAFT MOLDED DESIGNED 27'-0"
DRAFT (ASSIGNED) KEEL 31'-8 1/2"

GENERAL DIMENSIONS & DATA
DESIGN C4-S-64a
SHEET NO. 2 OF 19

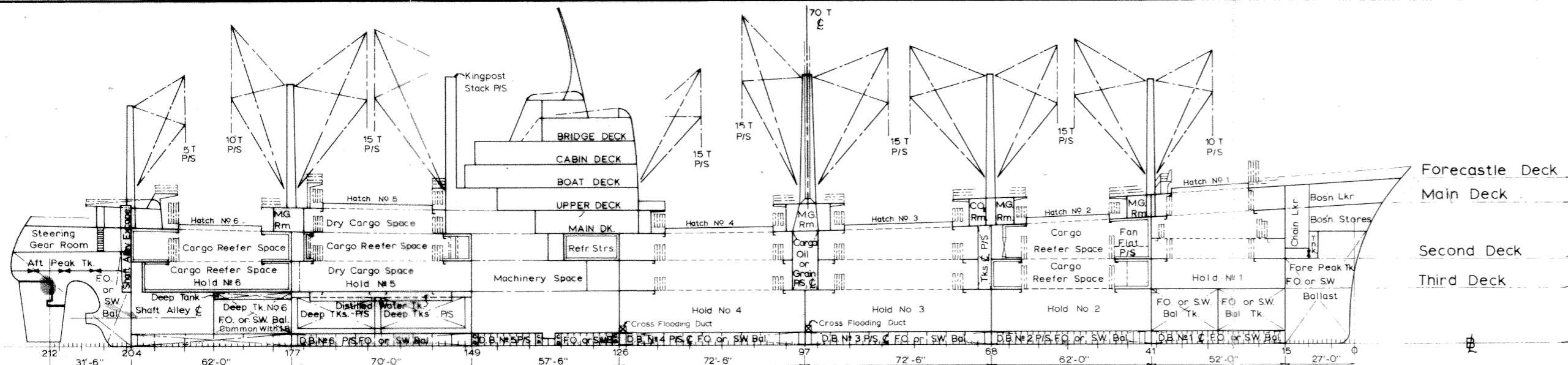
DESIGN C4-S-64a

NUMBER & ORDER OF PLANS table with 19 rows listing plan numbers and titles such as 'COVER & TITLE', 'GENERAL DIMENSIONS & DATA', 'TANK & HOLD CAPACITIES', etc.

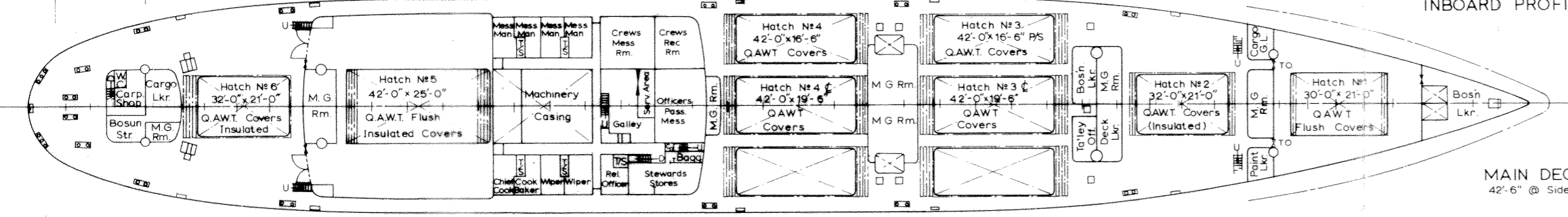
BOOKLET OF GENERAL PLANS
PREPARED BY
SON SHIPBUILDING & DEY DOCK COMPANY
CHESTER, PA.

M.A. HULL NO. YARD HULL NO. NAME table with columns for ship identification and names like AMERICAN ROVER, AMERICAN RAGER, etc.

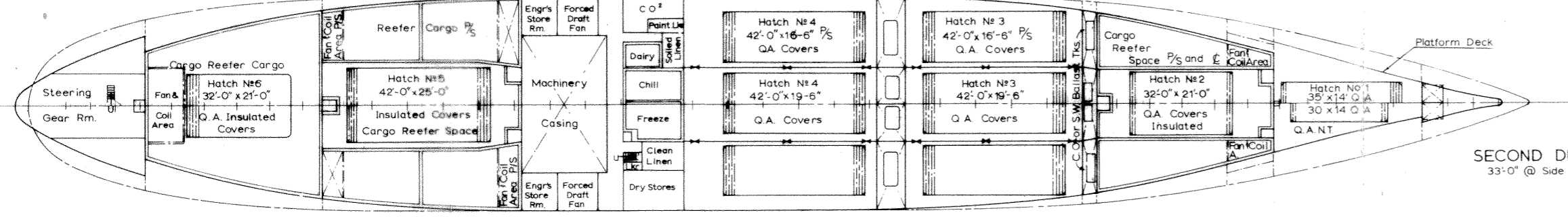
COVER & TITLE



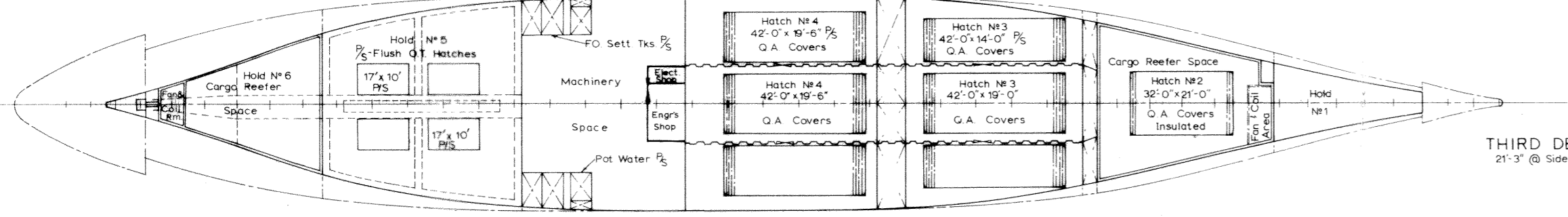
INBOARD PROFILE



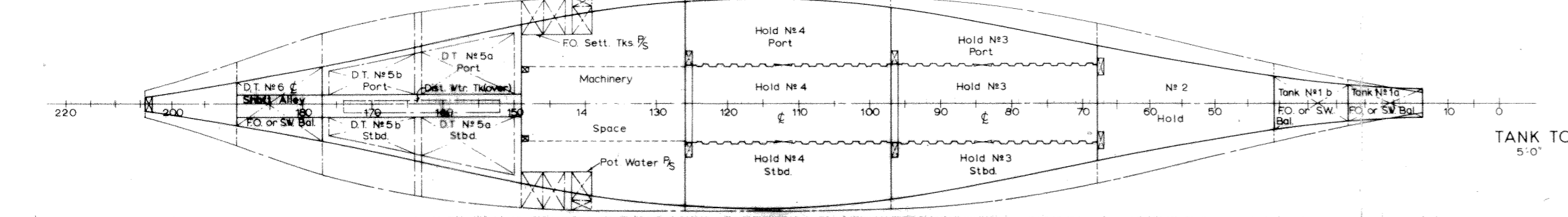
MAIN DECK
42'-6" @ Side



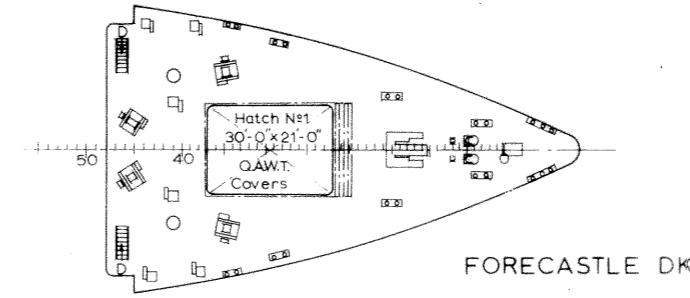
SECOND DECK
33'-0" @ Side



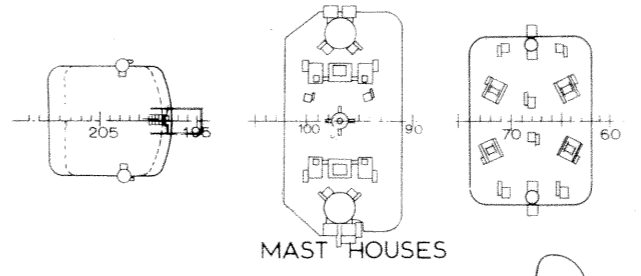
THIRD DECK
21'-3" @ Side



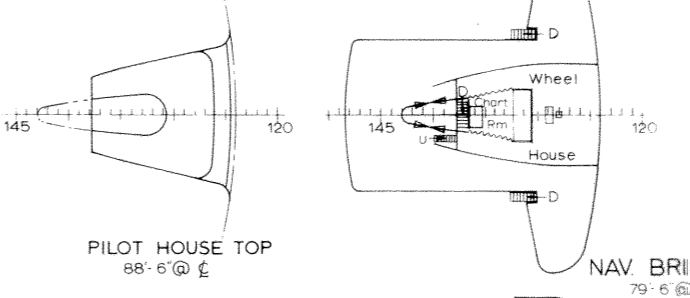
TANK TOP
5'-0"



FORECASTLE DK

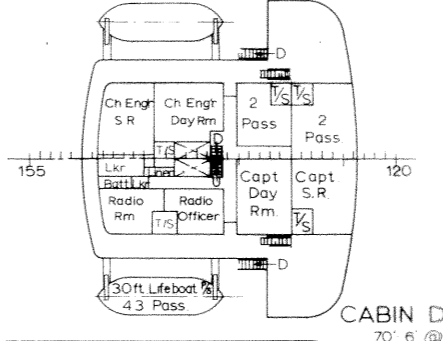


MAST HOUSES

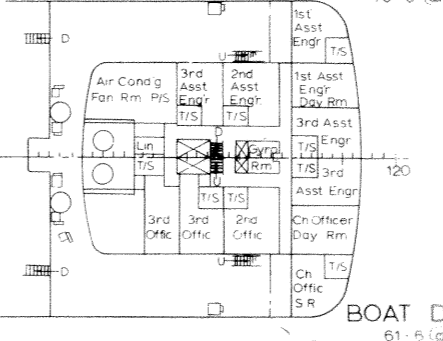


PILOT HOUSE TOP
88'-6" @

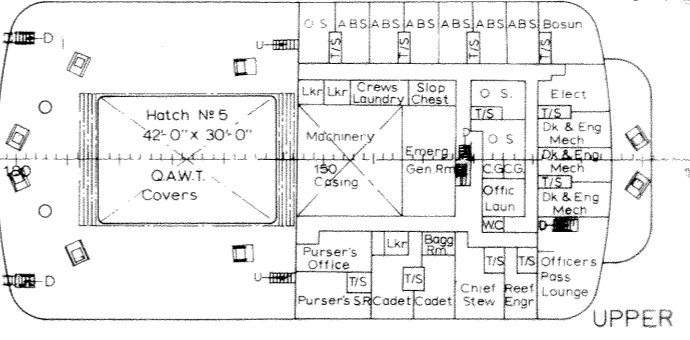
NAV BRIDGE DK.
79'-5" @



CABIN DECK
70'-6" @



BOAT DECK
61'-6" @



UPPER DECK
52'-6" @

PRINCIPAL CHARACTERISTICS

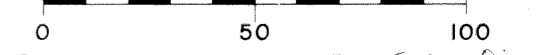
Length Overall	544'-0"
Length Between Perpendiculars	507'-0"
Beam, Molded	75'-0"
Depth to Main Deck At Side	42'-6"
Draft, Freeboard, Molded	31'-8"
Draft, Scantling, Molded	32'-0"
Light Ship, Tons (Approx.)	7,533
Crew, Effects & Stores, Tons	50
Fuel Oil, Tons	1,725
Liquid Cargo, Tons	1,428
Fresh Water, Tons	150
Cargo & Dunnage	8,193
Refrigerated Cargo, Tons	15,111
Total Deadweight, Tons	43,057
Total Displacement, Tons (Freeboard Draft)	20,590
Dry Cargo, Bale Cu. Ft.	546,050
Refrigerated Cargo, Net Cu. Ft.	151,160
Liquid Cargo Volume, Net Cu. Ft. (47,260 cu. ft. Incl. In Dry Cargo)	54,980
Passenger Accommodations	4
Crew Accommodations	39
Shaft Horsepower, Normal	18,750
Speed, Knots	20
Propeller 4 Blades (Approx. Dia)	22'-0"
Propelling Machinery, High Speed, Two Casing, Cross Compound, Double Reduction Geared Turbine.	

OFFICE OF SHIP CONSTRUCTION
MARITIME ADMINISTRATION
U. S. DEPARTMENT OF COMMERCE

UNITED STATES LINES CO.
SINGLE SCREW CARGO VESSEL

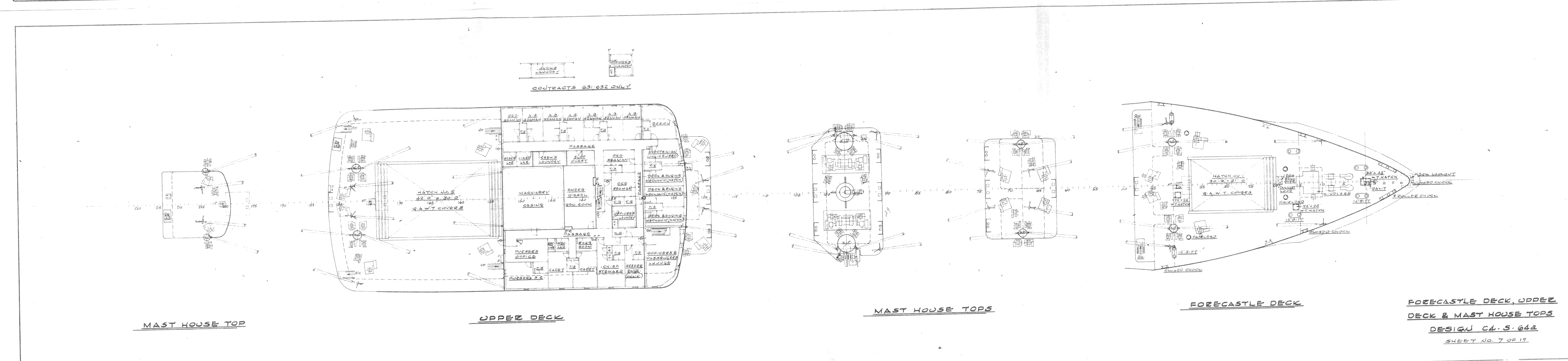
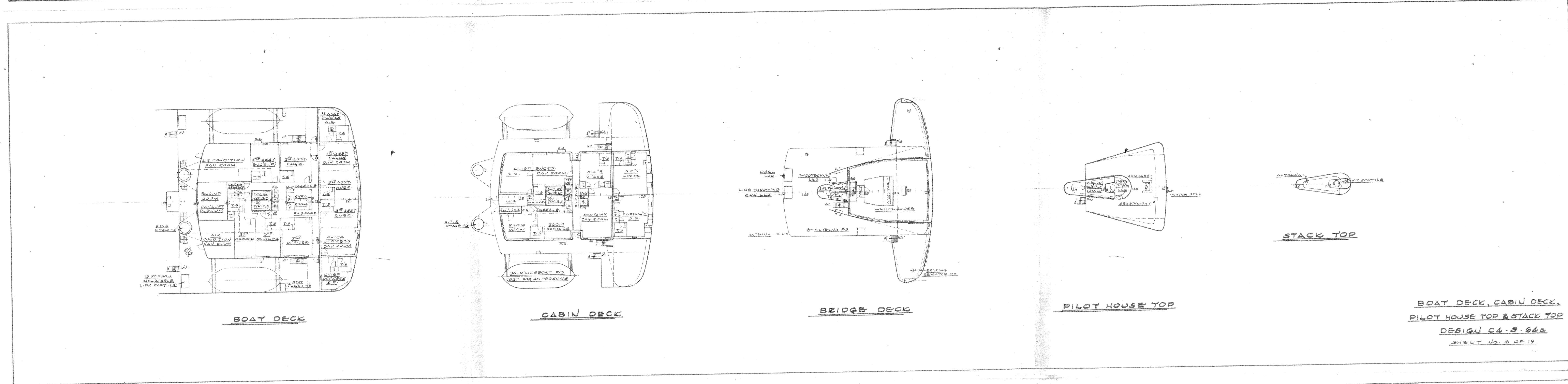
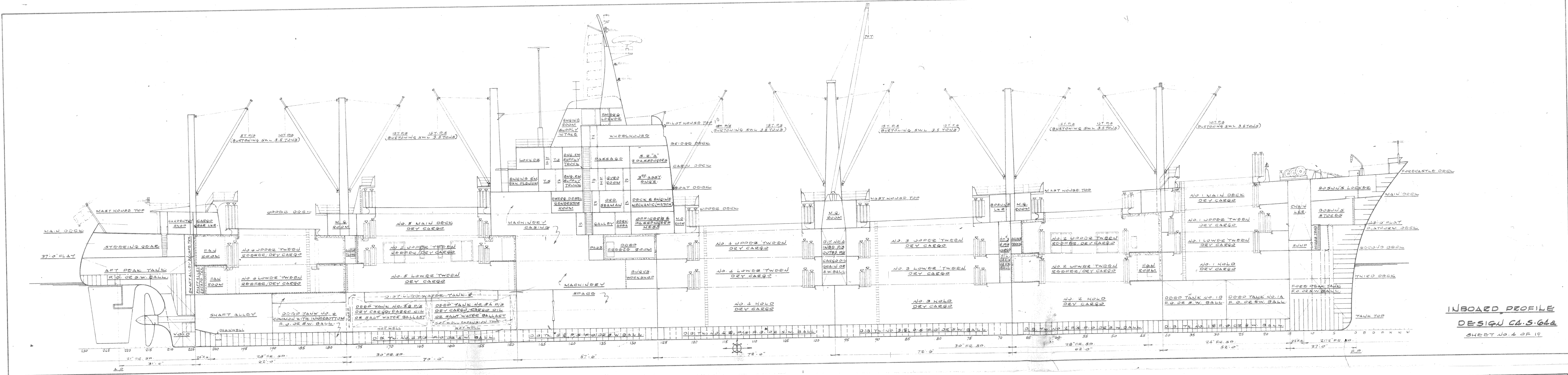
M.A. DESIGN C4-S-64a

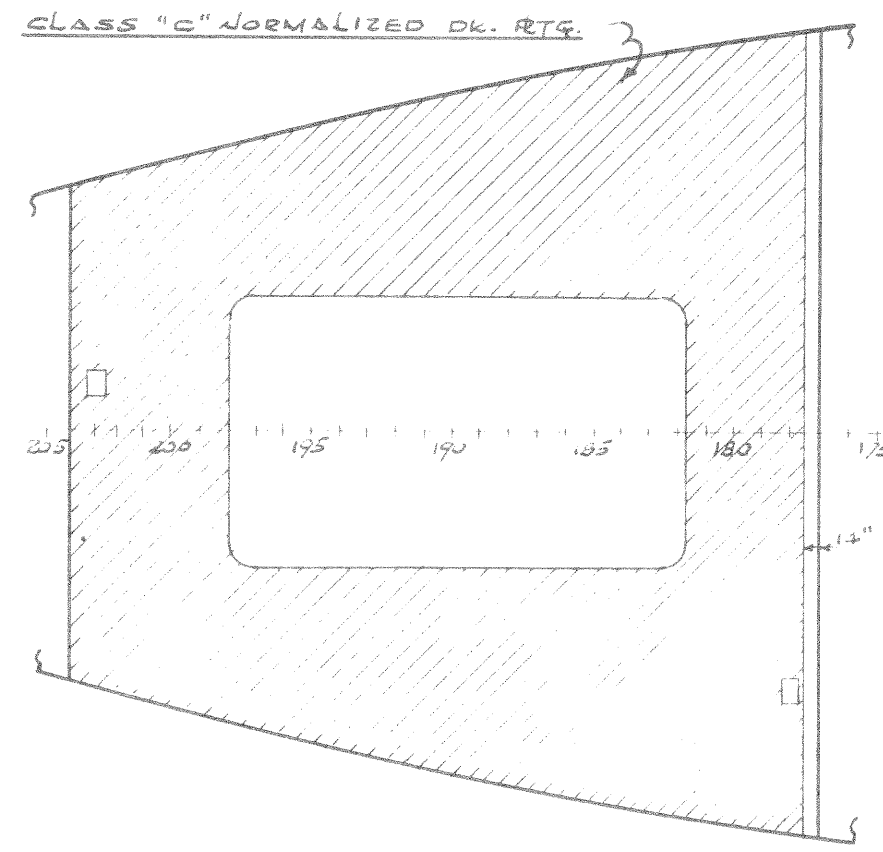
SCALE



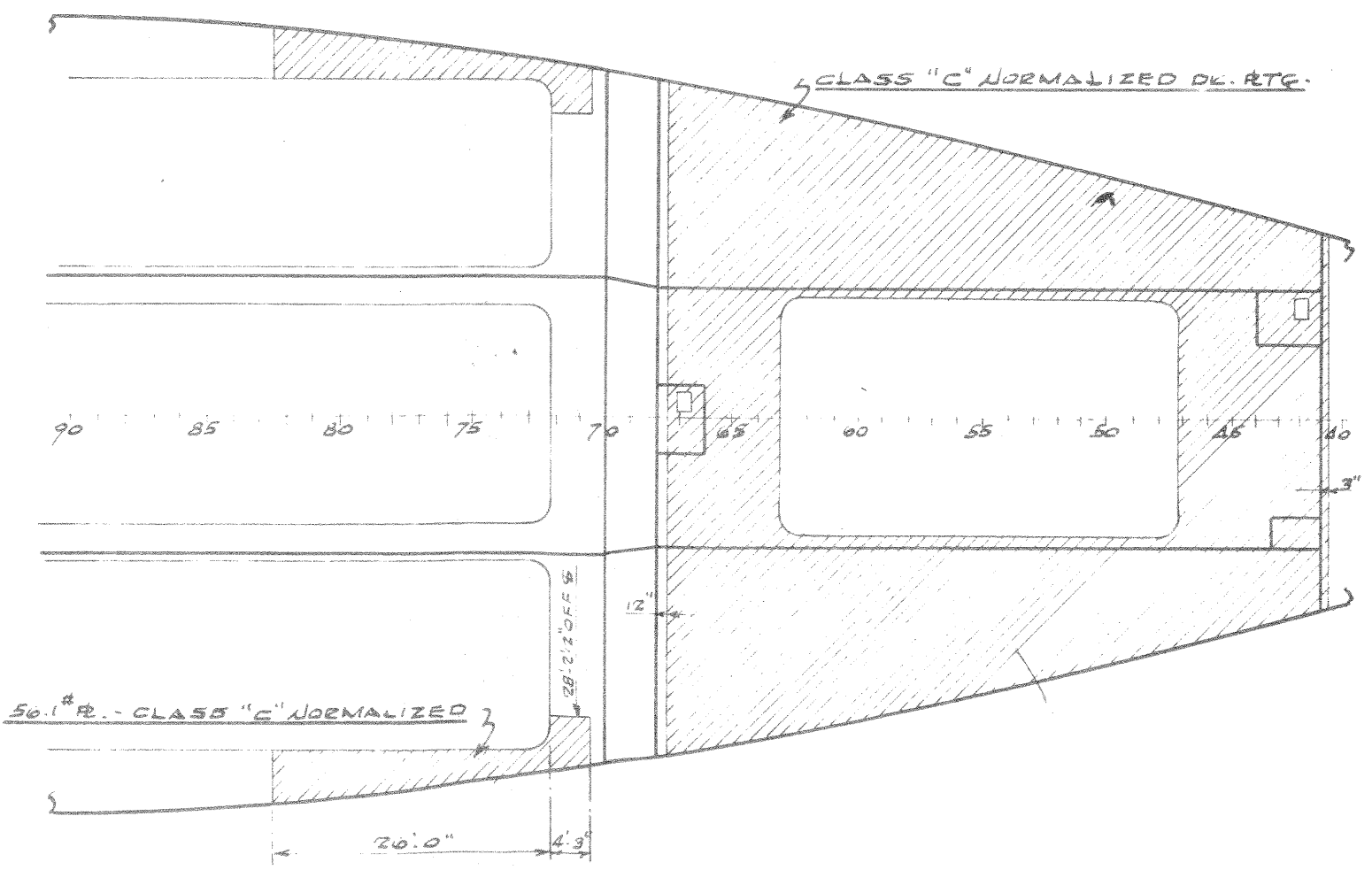
Date: May, 1964. Approved By: *F. J. Dill*
Ch., Div. of Ship Design

M.A. PLAN NO. C4-S-64a-S9-0-1

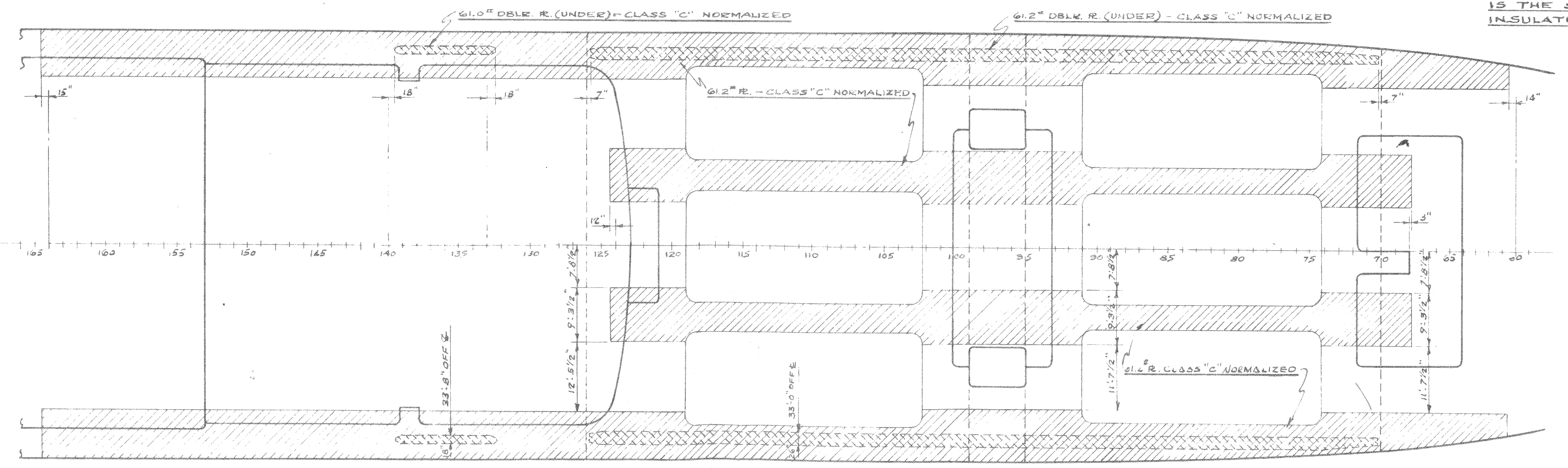




SECOND DK. (AFT)



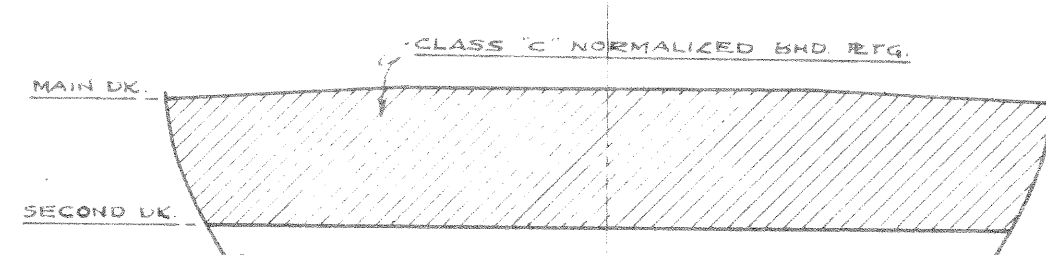
SECOND DK. (FWD)



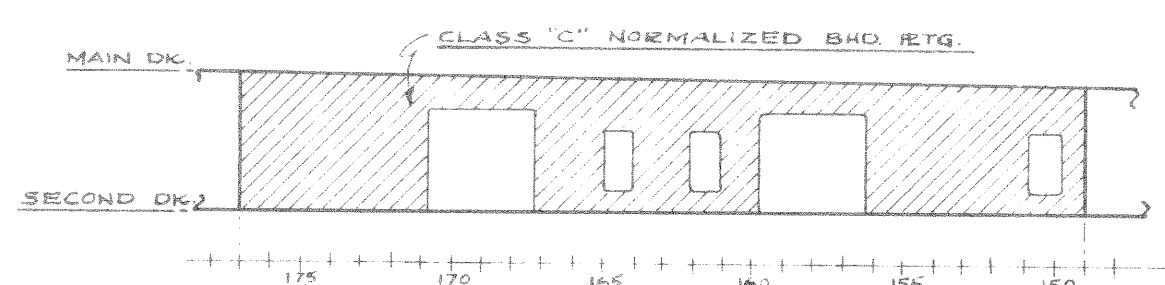
MAIN DECK

- NOTES**
1. ALL STEEL PLATING OVER 3/16" IS CLASS "C" NORMALIZED. OTHER STEEL UNDER 3/16" (THIS CLASSIFIED) WAS USED DUE TO COLD TEMPERATURE CHANGES IN REEFER SPACES & BOW CRITICAL STRESS & NOTCH TOUGHNESS WHERE OTHERWISE SHOWN. NO SPECIAL WELDING IS REQUIRED FOR CLASS "C" NORMALIZED STEEL.
 2. SPECIAL STEEL SHOWN IN REEFER HOLDS IS THE STRUCTURAL STEEL UNDER THE INSULATION & THE "FALSE" REEFER DECK.

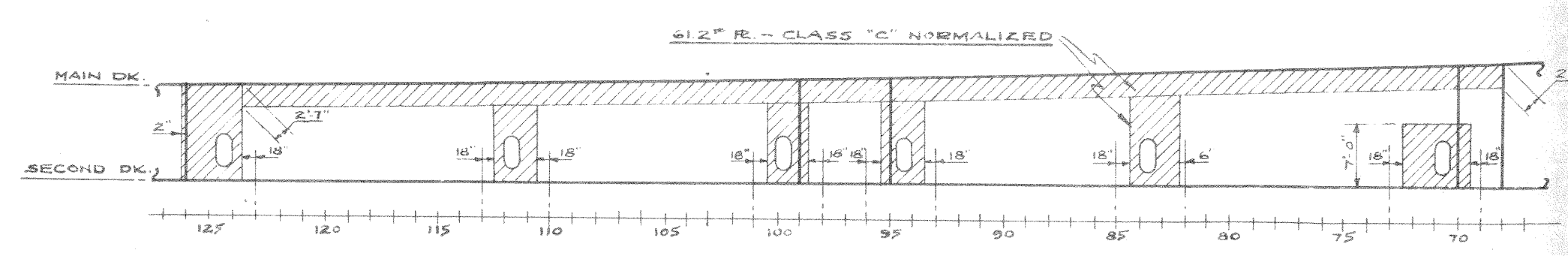
SECOND & MAIN DK.
(SPECIAL STEEL)
DESIGN C4-S-64a
SHEET NO. 17 OF 19
SCALE: 1/8" = 1 FT.



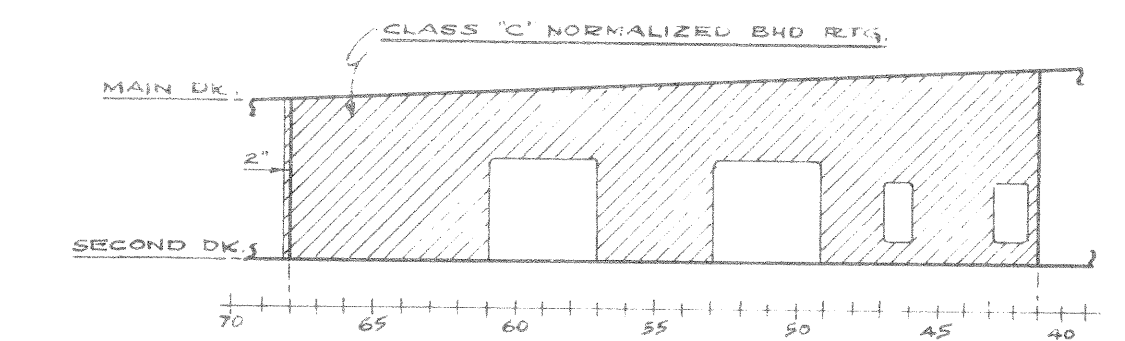
TRANSV. BHD. #177



LONG'L BHD (15° OFF C)
PORT SHOWN - STBD. OPR



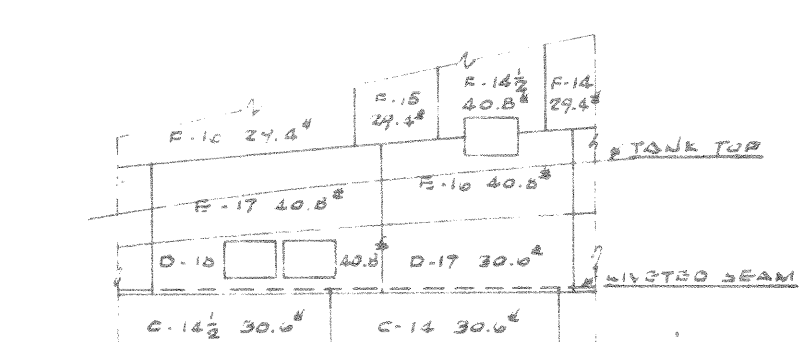
LONG'L BHD (15° OFF C)
PORT SHOWN - STBD. OPR



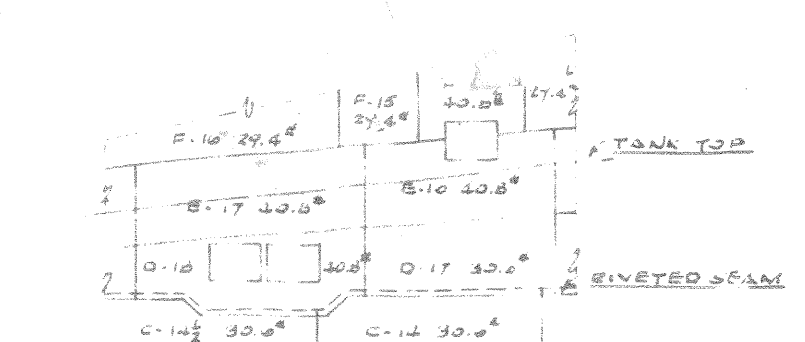
LONG'L BHD (12° OFF C)
PORT SHOWN - STBD. OPR

- NOTES**
1. ALL STEEL PLATING OVER 3/16" IS CLASS "C" NORMALIZED. OTHER STEEL UNDER 3/16" (THIS CLASSIFIED) WAS USED DUE TO COLD TEMPERATURE CHANGES IN REEFER SPACES.
 2. NO SPECIAL WELDING IS REQUIRED FOR CLASS "C" NORMALIZED STEEL.
 3. SPECIAL STEEL SHOWN IN REEFER HOLDS IS THE STRUCTURAL STEEL UNDER THE INSULATION.

MISC. BHDS.
(SPECIAL STEEL)
DESIGN C4-S-64a
SHEET NO. 18 OF 19
SCALE: 1/8" = 1 FT.



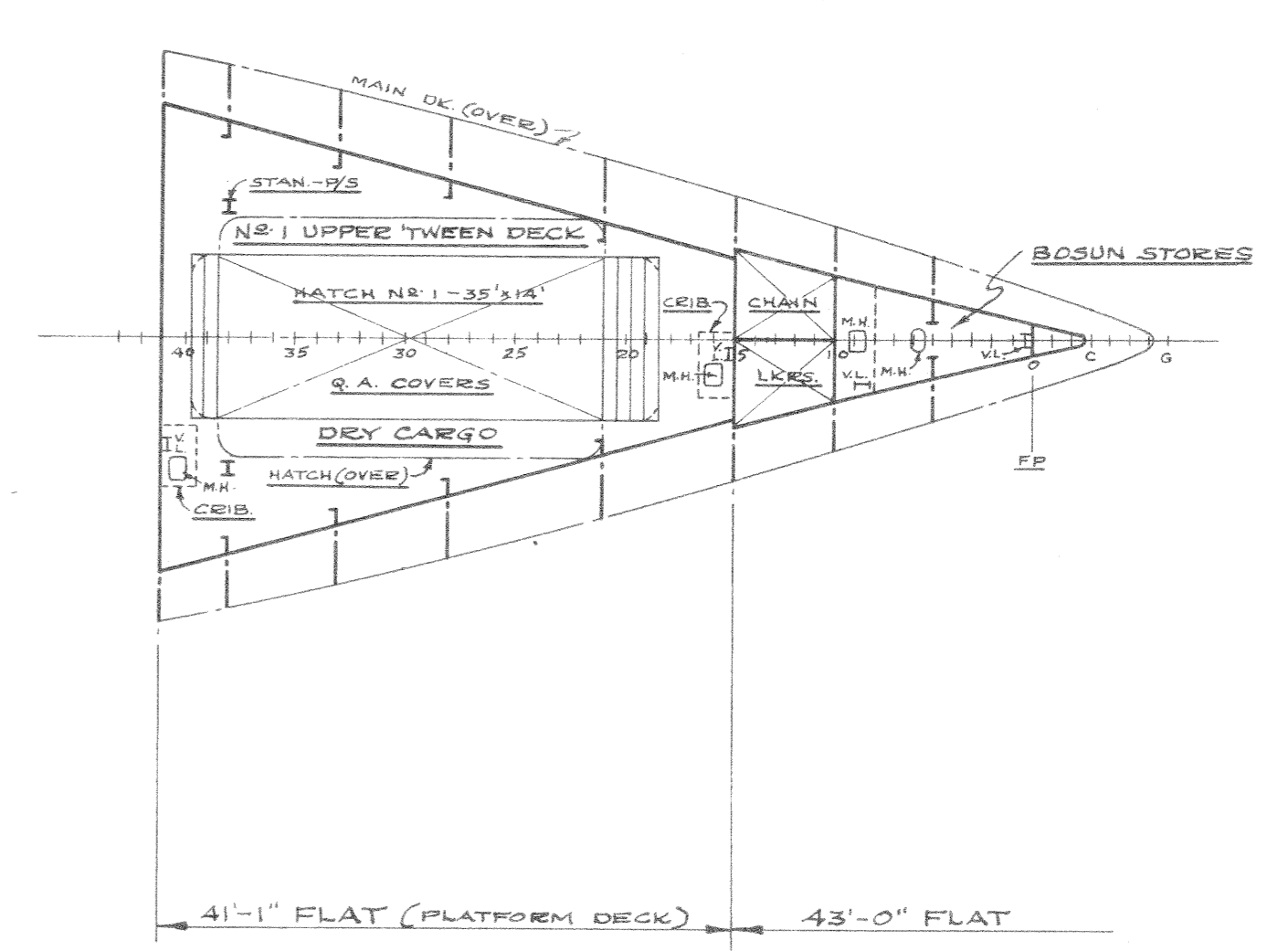
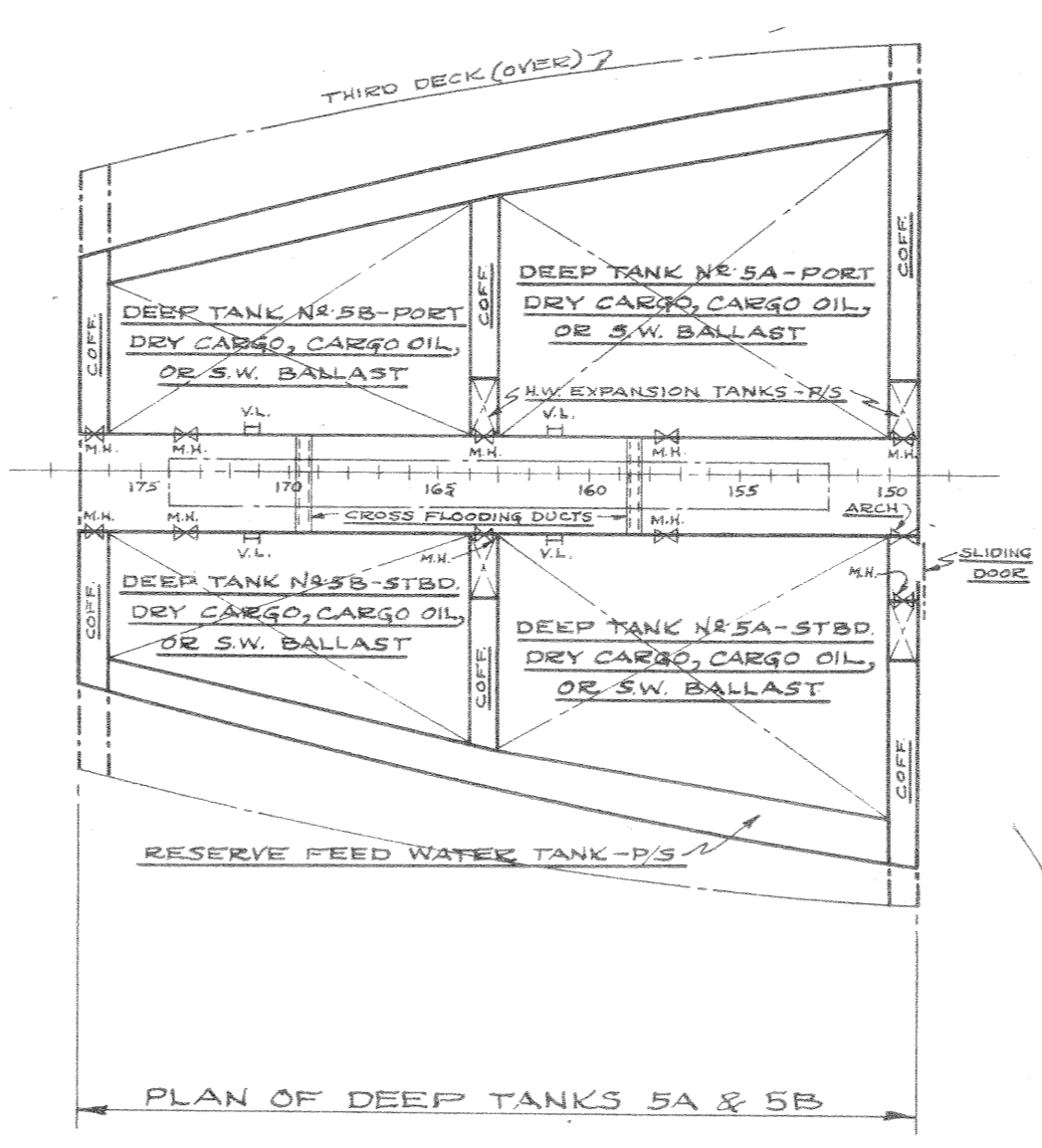
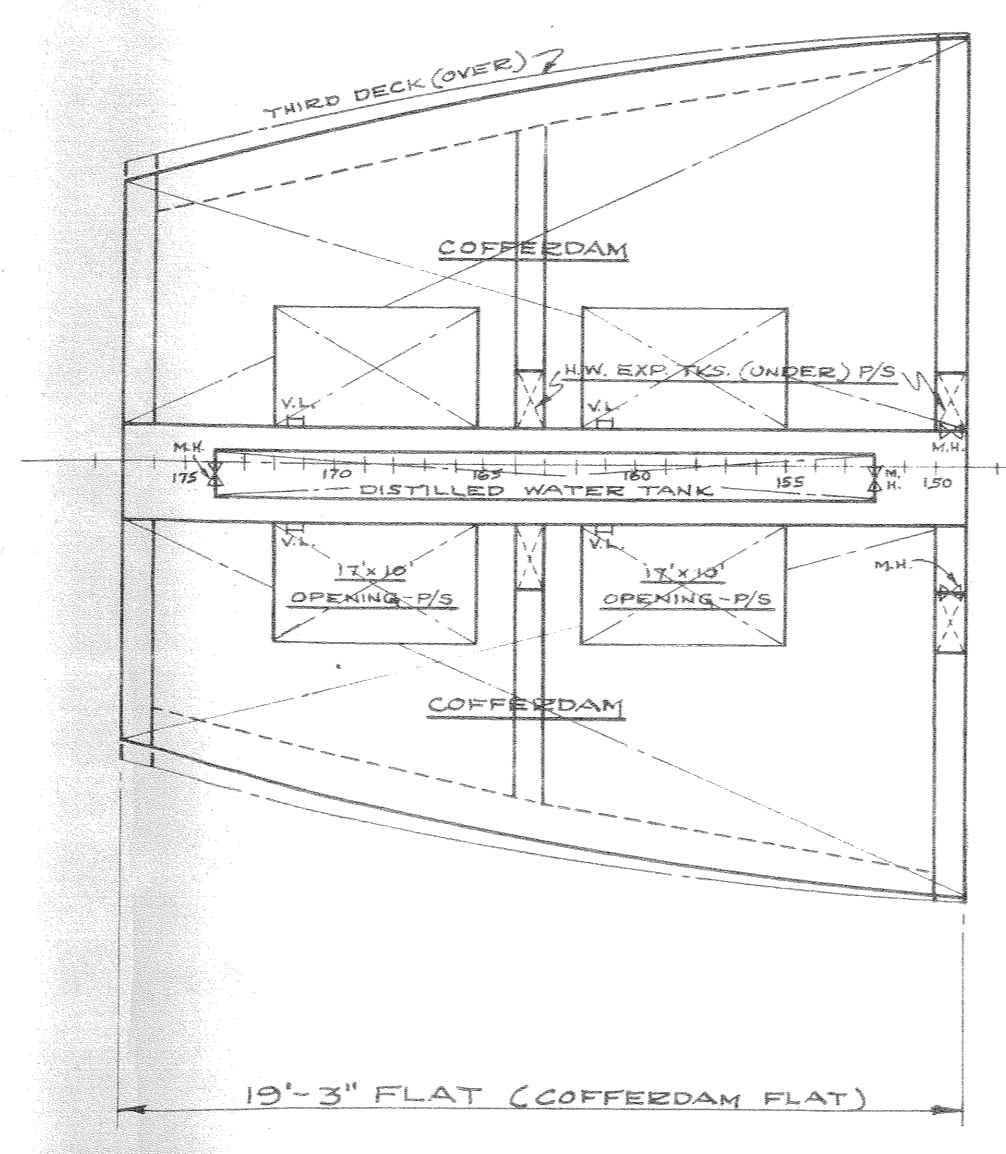
SHELL EXPANSION - PORT SIDE
CONTRACTS 028/029 ONLY



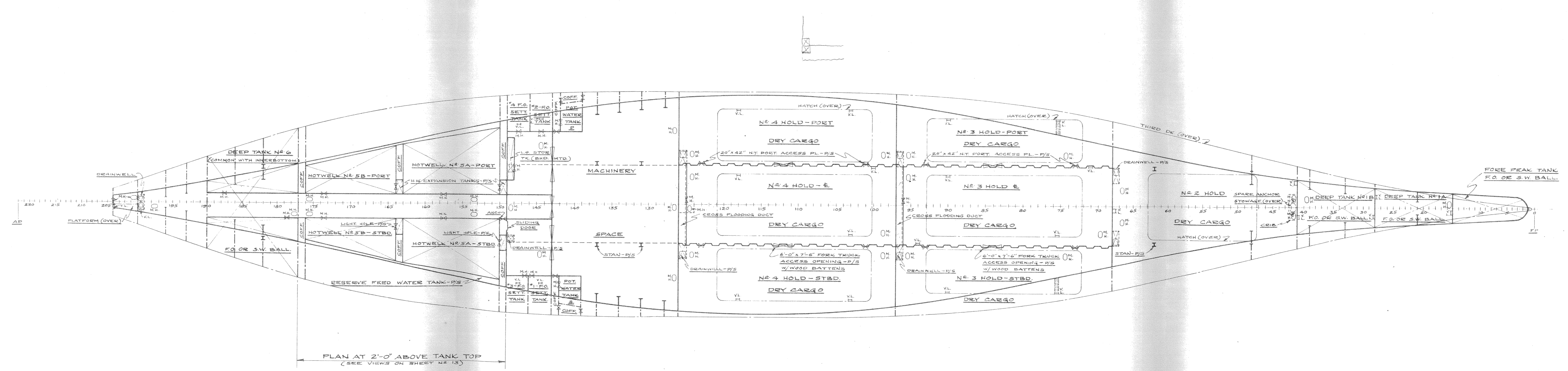
SHELL EXPANSION - PORT SIDE
CONTRACTS 028/029 ONLY

MAIN BEAM	A-25 22.0"	A-24 22.0"	A-23 22.0"	A-22 22.0"	A-21 22.7"	A-20 22.7"	A-19 23.0"	A-18 24.0"	A-17 24.0"	A-16 24.9"	A-15 24.9"	A-14 24.9"	A-13 24.9"	A-12 24.9"	A-11 24.9"	A-10 24.9"	A-9 24.9"	A-8 24.9"	A-7 24.9"	A-6 24.9"	A-5 24.9"	A-4 24.9"	A-3 24.9"	A-2 24.9"	A-1 24.9"
J-25 22.0"	J-24 22.0"	J-23 22.0"	J-22 22.0"	J-21 22.7"	J-20 22.7"	J-19 23.0"	J-18 24.0"	J-17 24.0"	J-16 24.9"	J-15 24.9"	J-14 24.9"	J-13 24.9"	J-12 24.9"	J-11 24.9"	J-10 24.9"	J-9 24.9"	J-8 24.9"	J-7 24.9"	J-6 24.9"	J-5 24.9"	J-4 24.9"	J-3 24.9"	J-2 24.9"	J-1 24.9"	
H-25 22.0"	H-24 22.0"	H-23 22.0"	H-22 22.0"	H-21 22.7"	H-20 22.7"	H-19 23.0"	H-18 24.0"	H-17 24.0"	H-16 24.9"	H-15 24.9"	H-14 24.9"	H-13 24.9"	H-12 24.9"	H-11 24.9"	H-10 24.9"	H-9 24.9"	H-8 24.9"	H-7 24.9"	H-6 24.9"	H-5 24.9"	H-4 24.9"	H-3 24.9"	H-2 24.9"	H-1 24.9"	
Q-25 22.0"	Q-24 22.0"	Q-23 22.0"	Q-22 22.0"	Q-21 22.7"	Q-20 22.7"	Q-19 23.0"	Q-18 24.0"	Q-17 24.0"	Q-16 24.9"	Q-15 24.9"	Q-14 24.9"	Q-13 24.9"	Q-12 24.9"	Q-11 24.9"	Q-10 24.9"	Q-9 24.9"	Q-8 24.9"	Q-7 24.9"	Q-6 24.9"	Q-5 24.9"	Q-4 24.9"	Q-3 24.9"	Q-2 24.9"	Q-1 24.9"	
T-2 20.0"	T-1 20.0"																								

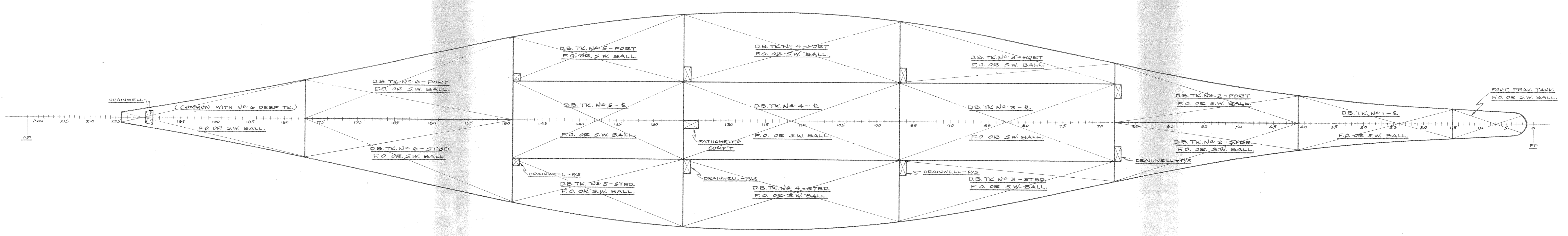
SHELL EXPANSION
DESIGN C4-S-64a
SHEET NO. 19 OF 19
SCALE: 1/8" = 1 FT.



MISC. FLATS & VIEWS
 DESIGN C4-S-64a
 SHEET NO. 11 OF 17
 SCALE: 1/2" = 1 FT.



HOLD
 DESIGN C4-S-64a
 SHEET NO. 12 OF 17
 SCALE: 1/2" = 1 FT.



INNERBOTTOM
 DESIGN C4-S-64a
 SHEET NO. 13 OF 17
 SCALE: 1/2" = 1 FT.