

| FUEL OIL OR SALT WATER | | | |
|----------------------------------|---------|----------|------------|
| COMPARTMENT | BARRELS | FUEL OIL | SALT WATER |
| FUEL OIL TANK NO. 1 FRS. 12-34 & | 463.7 | 62.95 | 74.50 |
| " " " " " " " " " " " " | 34.68 | 68.94 | 102.0 |
| " " " " " " " " " " " " | 10.0 | 35.94 | 52.91 |
| " " " " " " " " " " " " | 58-90 & | 978.5 | 1574 |
| " " " " " " " " " " " " | 572.3 | 8631 | 91.7 |
| " " " " " " " " " " " " | 572.3 | 6631 | 91.7 |
| " " " " " " " " " " " " | 530.3 | 79.98 | 85.0 |
| " " " " " " " " " " " " | 380.5 | 57.39 | 61.0 |
| " " " " " " " " " " " " | 380.5 | 57.39 | 61.0 |
| " " " " " " " " " " " " | 101.7 | 101.7 | 107.77 |
| " " " " " " " " " " " " | 28.8 | 64.88 | 88.37 |
| " " " " " " " " " " " " | 1098.8 | 241.05 | 284.50 |
| " " " " " " " " " " " " | 1098.8 | 241.05 | 284.50 |
| " " " " " " " " " " " " | 1487.3 | 284.31 | 338.60 |
| " " " " " " " " " " " " | 1803.8 | 241.88 | 287.89 |
| " " " " " " " " " " " " | 604.3 | 91.16 | |
| " " " " " " " " " " " " | 880.1 | 78.44 | |
| TOTAL | 4898.8 | 2060.51 | 2406.5 |

| WATER BALLAST | | | |
|-------------------------|------------|-------------|------------|
| COMPARTMENT | CUBIC FEET | FRESH WATER | SALT WATER |
| " " " " " " " " " " " " | 6300.0 | 61.35 | 63.11 |
| " " " " " " " " " " " " | 181.11 | 1.81 | 1.81 |
| TOTAL | 7081.1 | 63.16 | 64.92 |

| SHIPS STORES | | |
|-------------------------|--------------|--------------|
| COMPARTMENT | SALE CU. FT. | SALE CU. FT. |
| " " " " " " " " " " " " | 1650 | |
| " " " " " " " " " " " " | 727 | |
| " " " " " " " " " " " " | 704 | |
| " " " " " " " " " " " " | 1710 | |
| " " " " " " " " " " " " | 170 | |
| " " " " " " " " " " " " | 405 | |
| TOTAL | 3828 | |

| REFRIGERATED CARGO | | |
|-------------------------|--------------|--------------|
| COMPARTMENT | SALE CU. FT. | SALE CU. FT. |
| " " " " " " " " " " " " | 18,008 | 18,017 |
| " " " " " " " " " " " " | 15,444 | 15,453 |
| " " " " " " " " " " " " | 18,107 | 18,116 |
| " " " " " " " " " " " " | 28,943 | 28,952 |
| " " " " " " " " " " " " | 37,486 | 37,495 |
| " " " " " " " " " " " " | 47,758 | 47,767 |
| " " " " " " " " " " " " | 11,624 | 11,633 |
| " " " " " " " " " " " " | 25,473 | 25,482 |
| " " " " " " " " " " " " | 55,808 | 55,817 |
| " " " " " " " " " " " " | 6,045 | 6,054 |
| " " " " " " " " " " " " | 5,338 | 5,347 |
| " " " " " " " " " " " " | 4,250 | 4,259 |
| " " " " " " " " " " " " | 28,984 | 28,993 |
| " " " " " " " " " " " " | 30,095 | 30,104 |
| " " " " " " " " " " " " | 3,135 | 3,144 |
| " " " " " " " " " " " " | 26,831 | 26,840 |
| TOTAL | 305,015 | 305,024 |

| MISCELLANEOUS CARGO | | |
|-------------------------|--------------|--------------|
| COMPARTMENT | SALE CU. FT. | SALE CU. FT. |
| " " " " " " " " " " " " | 1330 | |
| " " " " " " " " " " " " | 1480 | |
| " " " " " " " " " " " " | 4050 | |
| TOTAL | 3210 | |

| REFRIGERATED SHIPS STORES | | |
|---------------------------|--------------|--------------|
| COMPARTMENT | SALE CU. FT. | SALE CU. FT. |
| " " " " " " " " " " " " | 930 | |
| " " " " " " " " " " " " | 630 | |
| " " " " " " " " " " " " | 1480 | |
| " " " " " " " " " " " " | 442 | |
| " " " " " " " " " " " " | 448 | |
| " " " " " " " " " " " " | 418 | |
| " " " " " " " " " " " " | 2470 | |
| " " " " " " " " " " " " | 154 | |
| " " " " " " " " " " " " | 366 | |
| " " " " " " " " " " " " | 2282 | |
| " " " " " " " " " " " " | 350 | |
| " " " " " " " " " " " " | 1531 | |
| TOTAL | 12,311 | |

| EQUIVALENTS | |
|-------------------|------------------|
| 1 TON | 2240 POUNDS |
| 1 TON SALT WATER | 35 CUBIC FEET |
| 1 TON FRESH WATER | 36 CUBIC FEET |
| 1 TON FUEL OIL | 37.25 CUBIC FEET |
| 1 BARREL FUEL OIL | 42 GALLONS |
| 1 CUBIC FOOT | 7.48 GALLONS |
| 1 BARREL | 5.61 CUBIC FEET |

| FRESH WATER | | | |
|--|---------|----------------|----------------|
| COMPARTMENT | GALLONS | TONS AT 62° F. | TONS AT 70° F. |
| RESERVE FEED WATER NO. 5 FRS. 94-114 P | 22,295 | 84.8 | |
| " " " " " " " " " " " " | 2,295 | 8.48 | |
| " " " " " " " " " " " " | 24,570 | 91.4 | |
| POTABLE WATER TANK " " " " " " " " " " " " | 8,400 | 31.1 | |
| " " " " " " " " " " " " | 8,400 | 31.1 | |
| DISTILLED WATER TANK " " " " " " " " " " " " | 2,700 | 10 | |
| FRESH WATER TANK NO. 6 " " " " " " " " " " " " | 10,854 | 40.2 | |
| " " " " " " " " " " " " | 10,854 | 40.2 | |
| " " " " " " " " " " " " | 27,351 | 101.3 | |
| " " " " " " " " " " " " | 18,576 | 68.8 | |
| " " " " " " " " " " " " | 18,576 | 68.8 | |
| TOTAL | 153,285 | 552.5 | |

| SECTION AT FR. 85 | | |
|-------------------|-----|-----|
| Upper Treen Deck | 100 | 100 |
| Lower Treen Deck | 100 | 100 |
| Orlop Deck | 100 | 100 |
| Tank Top | 100 | 100 |

| SECTION AT FR. 95 | | |
|-------------------|-----|-----|
| Upper Treen Deck | 100 | 100 |
| Lower Treen Deck | 100 | 100 |
| Orlop Deck | 100 | 100 |
| Tank Top | 100 | 100 |

| SECTION AT FR. 122 | | |
|--------------------|-----|-----|
| Upper Treen Deck | 100 | 100 |
| Lower Treen Deck | 100 | 100 |
| Orlop Deck | 100 | 100 |
| Tank Top | 100 | 100 |

| SECTION AT FR. 158 | | |
|--------------------|-----|-----|
| Upper Treen Deck | 100 | 100 |
| Lower Treen Deck | 100 | 100 |
| Orlop Deck | 100 | 100 |
| Tank Top | 100 | 100 |

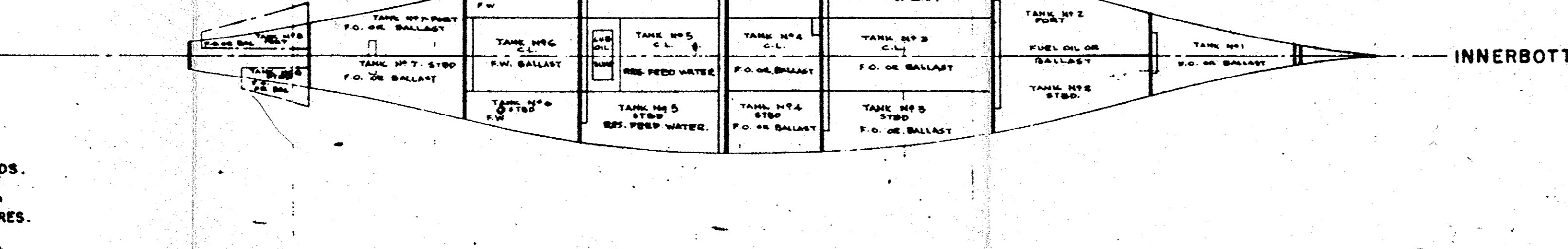
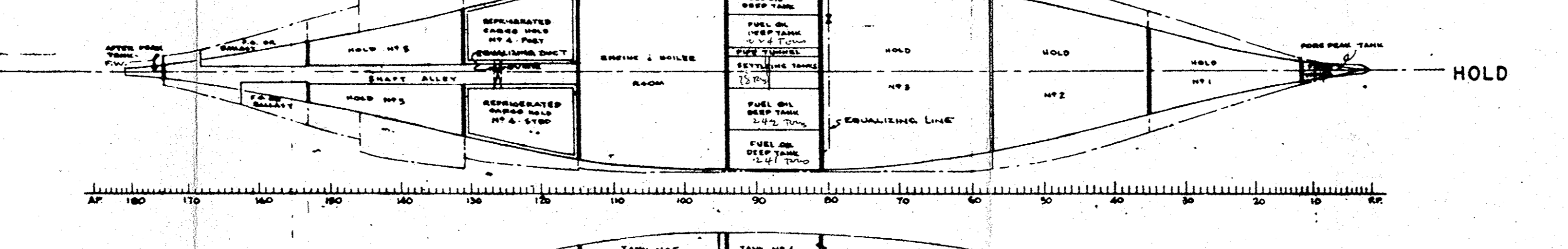
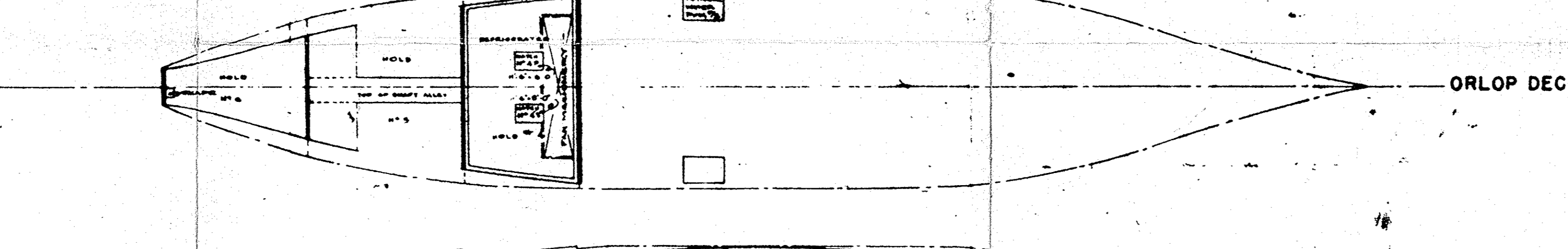
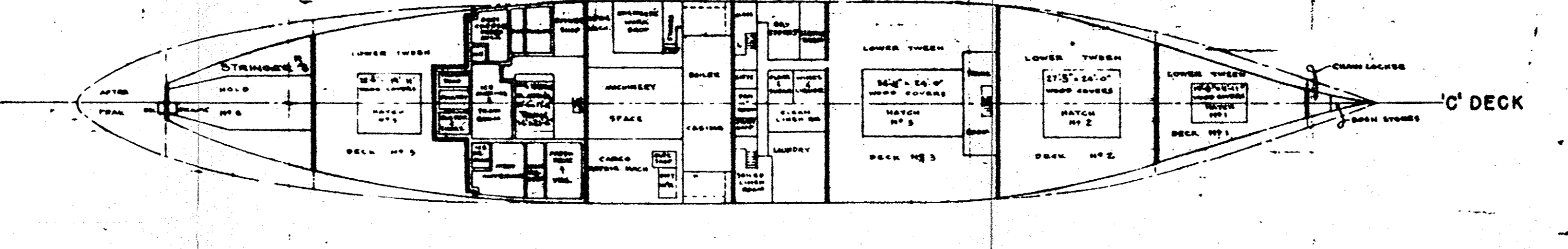
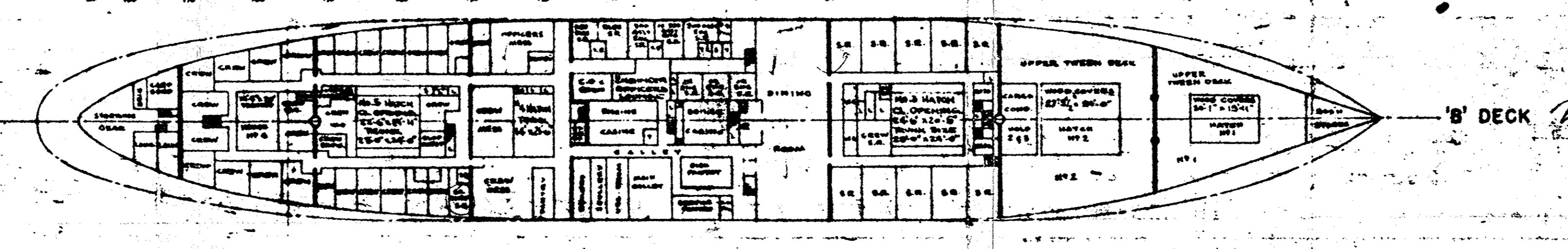
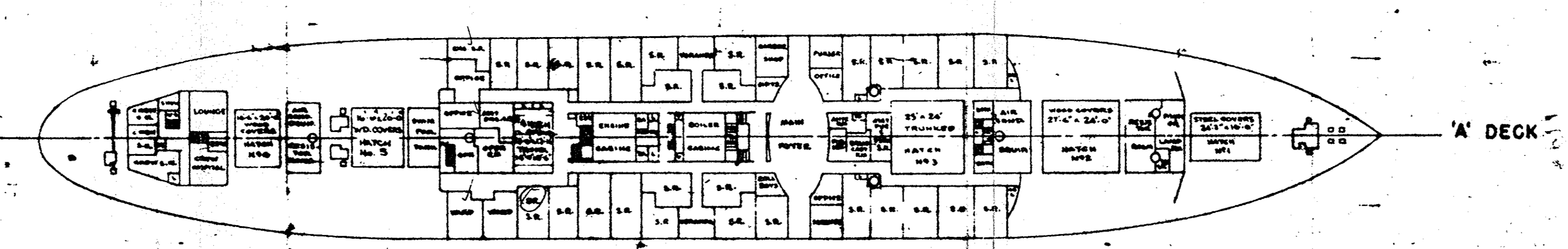
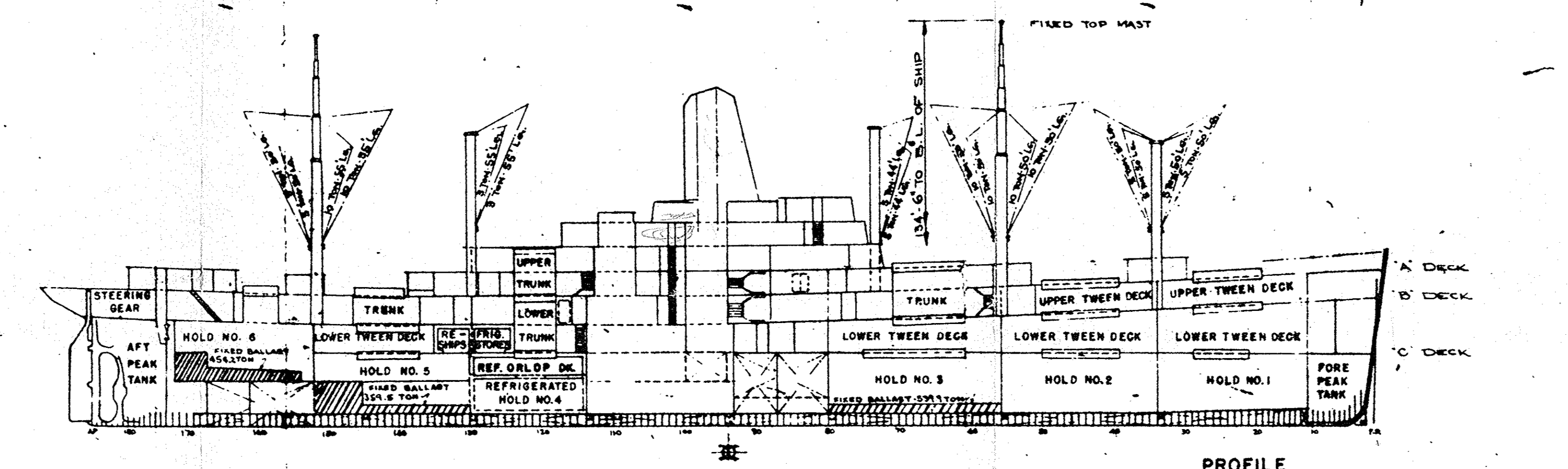
GRAIN CAPACITIES - CUBIC FEET
 FROM TOP OF INNERBOTTOM OR DECK PLATING TO UNDER SIDE OF DECK PLATING AT TOP, TO SHELL PLATING AT SIDES, AND TO BULKHEAD PLATING AT ENDS. DEDUCTIONS MADE FOR - CEILINGS, HATCH GIRDERS AND BRACKETS, HATCH COAMINGS, AND OTHER INTERFERING STRUCTURES. VOLUMES IN WAY OF HATCHES TO UNDER SIDE OF HATCH COVERS.

BALE CAPACITIES - CUBIC FEET
 FROM TOP OF INNERBOTTOM OR DECK PLATING TO UNDER SIDE OF DECK BEAMS AT TOP, TO CARGO BATTENS AT SIDES, TO BULKHEADS OR BULKHEAD STIFFENERS AT ENDS. DEDUCTIONS MADE FOR - CEILINGS, VOID SPACES CREATED BY FRAME AND BEAM BRACKETS, HATCHGIRDERS & BRACKETS, HATCH COAMINGS, BROWS, AND OTHER INTERFERING STRUCTURES. VOLUMES IN WAY OF HATCHES TO UNDER SIDE OF HATCH BEAMS. DEDUCTIONS MADE FOR - CEILINGS, VOID SPACES CREATED BY FRAME AND BEAM BRACKETS, HATCHGIRDERS & BRACKETS, HATCH COAMINGS, BROWS, AND OTHER INTERFERING STRUCTURES. VOLUMES IN WAY OF HATCHES TO UNDER SIDE OF HATCH BEAMS.

ALL TANK CAPACITIES ARE FOR 100% FULL TANKS.

OFFICIAL NO. 286443 S.S. EXCALIBUR

CALL LETTERS K-N-T-S S.S. EXCALIBUR



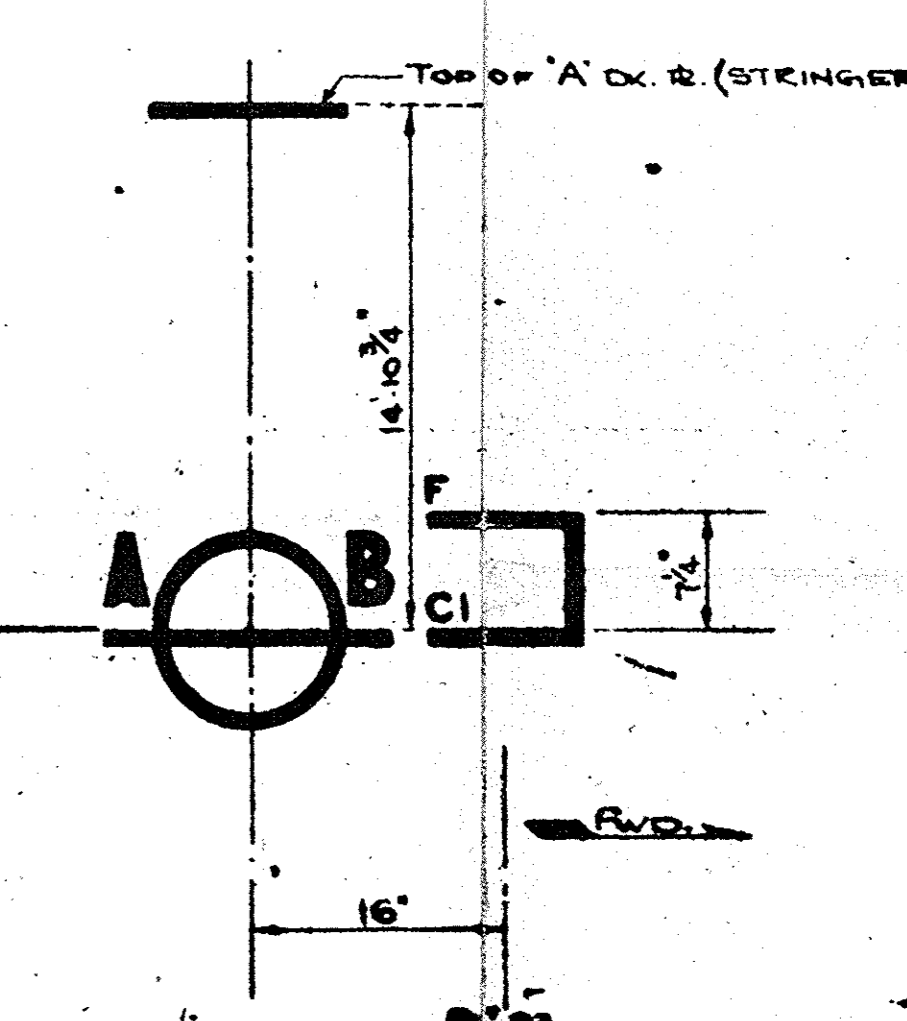
GENERAL PARTICULARS

LENGTH OVERALL 473'-1"
 LENGTH BETWEEN PERPENDICULARS 450'-0"
 BREADTH MOLDED 66'-0"
 BREADTH EXTREME 66'-5 1/2"
 DEPTH MLD. TO 'A' DECK AT SIDE 42'-3"
 TURBINES - BETHLEHEM STEEL CO. 8000 S.H.P.
 BOILERS - BARCOCK & WILCOX 500" 750" S.H.P.
 PROPELLERS SOLID 19'-0" DIA. PITCH 20'-0" 4 BLADES
 ELECTRIC GENERATORS 3 300 KW
 RUDDER CONTRA-GUIDE
 GROSS TONNAGE 9844.84 TONS
 NET TONNAGE 8195 TONS

| DEADWT S.W. | DRAFT | DISPLMT S.W. | TONS PER INCH TRIM 1" | MOMENT TO 1240 |
|-------------|-------|--------------|-----------------------|----------------|
| 8000 | 29 | 15000 | 32 | 1220 |
| 7000 | 28 | 14000 | 31 | 1180 |
| 6000 | 27 | 13000 | 30.5 | 1140 |
| 5000 | 26 | 12000 | 30 | 1100 |
| 4000 | 25 | 11000 | 29.5 | 1060 |
| 3000 | 24 | 10000 | 29 | 1020 |
| 2000 | 23 | 9000 | 28.5 | 980 |
| 1000 | 22 | 8000 | 28 | 940 |
| 0 | 21 | 7000 | 27.5 | 900 |
| | 20 | 6000 | 27 | 860 |
| | 19 | 5000 | 26.5 | 820 |
| | 18 | 4000 | 26 | 780 |
| | 17 | 3000 | 25.5 | 740 |
| | 16 | 2000 | 25 | 700 |
| | 15 | 1000 | 24.5 | 660 |
| | 14 | 0 | 24 | 620 |
| | 13 | | 23.5 | 580 |
| | 12 | | 23 | 540 |
| | 11 | | 22.5 | 500 |

DEAD WEIGHT 7266 TONS

LIGHT SHIP WEIGHT 7627 TONS



| ALTERATIONS | | | | |
|-------------|--|----------|---------|----------|
| NO. | DESCRIPTION | BY | DATE | APPR. |
| 1 | REFRESH CARGO COMPARTMENT - NO. 4 HOLD ORLOP DECK CUBIC CAPACITY DECREASED FOR ALLOWANCE FOR MACHINERY | T. J. M. | 1-13-49 | T. J. W. |

S.S. EXCALIBUR

U.S. MARITIME COMMISSION
 AMERICAN EXPORT LINES
 APPROVED BY: *M. S. Bond* DATE: *1-13-49*

U.S. EXCALIBUR MC-1678 HOBOKEN
 S.S. EXCALIBUR MC-1678 56TH ST. BKLYN
 S.S. EXCALIBUR MC-1678 HOBOKEN
 S.S. EXCALIBUR MC-1678 STATER-CLAND

NAME: HULL NO. 1208 JOB NO. 1208 ITEM YARD

BETHLEHEM STEEL COMPANY INCORPORATED
 SHIPBUILDING DIVISION - BROOKLYN 56TH ST. YARD

EXPORTER CLASS PASSENGER - CARGO VESSEL

CAPACITY PLAN

SCALE 1/32" = 1'-0" DRAWN BY R.C.M. DATE 9-24-48 CHECKED BY T.J.W. APPROVED BY T.J.W.

INDEX NO. E-1-1-3-1 FILE NO. E-423