

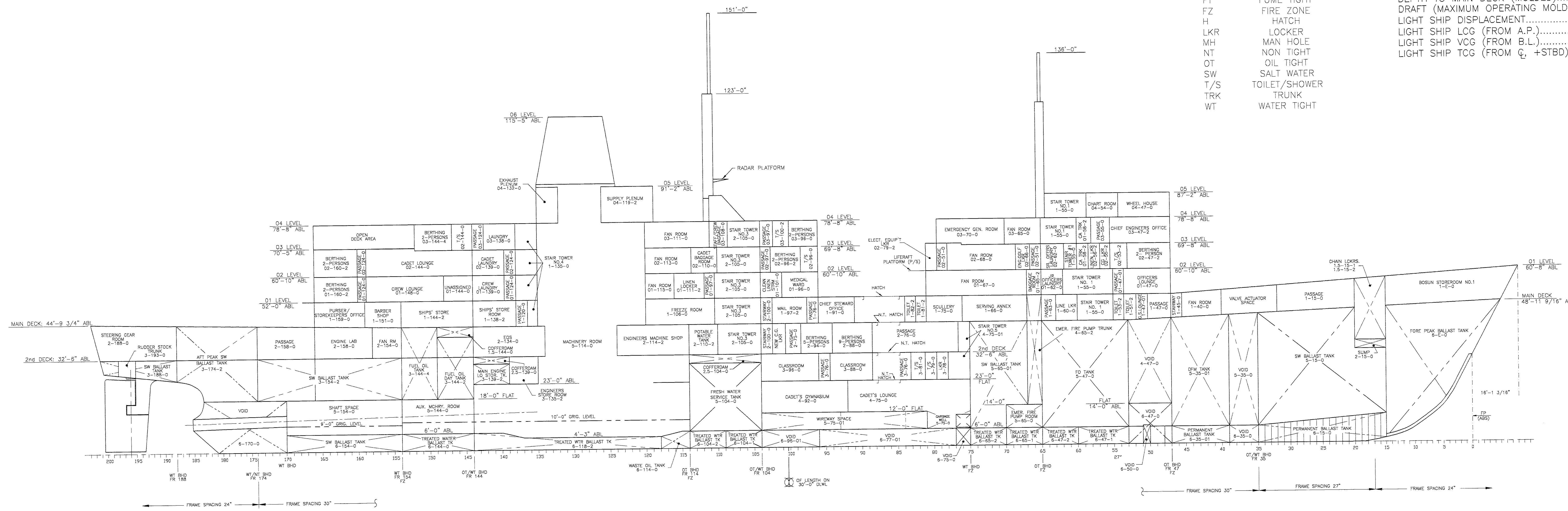
OUTBOARD PROFILE

ABBREVIATIONS

- AO ACCESS OPENING
- DFM DIESEL FUEL, MARINE
- FO FUEL OIL
- FT FUME TIGHT
- FZ FIRE ZONE
- H HATCH
- LKR LOCKER
- MH MAIN HOLE
- NT NON TIGHT
- OT OIL TIGHT
- SW SALT WATER
- T/S TOILET/SHOWER
- TRK TRUNK
- WT WATER TIGHT

PRINCIPAL DIMENSIONS

LENGTH OVERALL.....	499'-0 1/2"
LENGTH BETWEEN PERPENDICULARS.....	476'-0"
BEAM (MOLDED).....	72'-0"
DEPTH TO MAIN DECK (MOLDED).....	42'-0"
DRAFT (MAXIMUM OPERATING MOLDED).....	28'-0 1/4"
LIGHT SHIP DISPLACEMENT.....	9377.7 LT
LIGHT SHIP LCG (FROM A.P.).....	243'-0"
LIGHT SHIP VCG (FROM B.L.).....	28'-6"
LIGHT SHIP TCG (FROM Q. +STBD).....	-1/2"



INBOARD PROFILE

PLOT PARAMETER TABLE: STANDARD
 PLOT SCALE (PLOT UNITS = DRAWING UNITS): 1/16" = 1'-0"

REVISIONS				
ZONE	REV	DESCRIPTION	DATE	APPROVAL
A	1	ALL "LFV" BALLAST TANK CHANGED TO "TREATED WTR BALLAST TANK"	5/1/97	KM

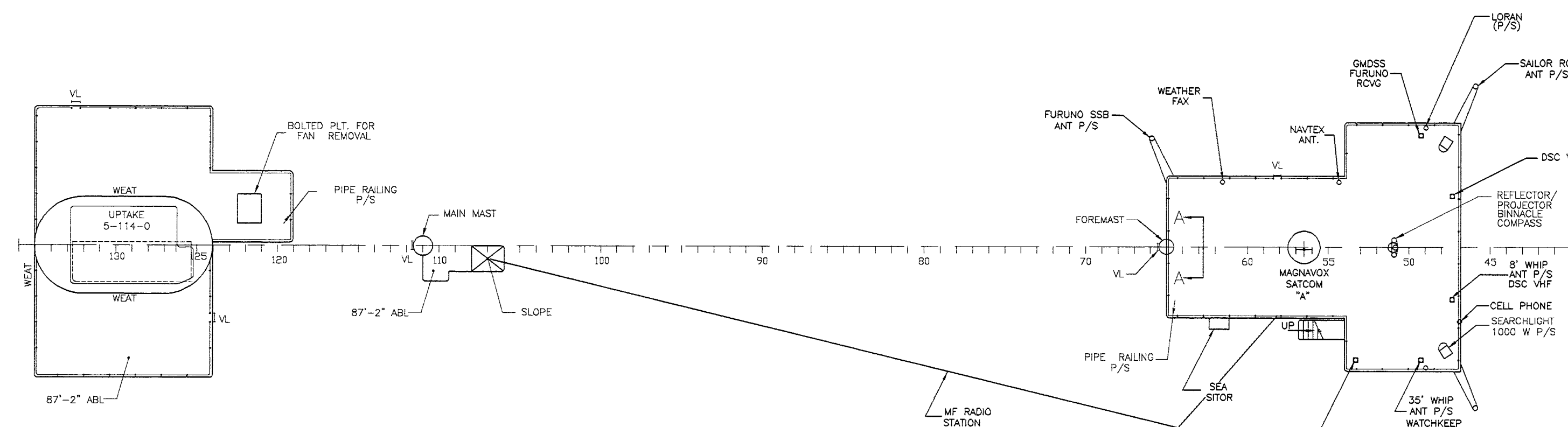
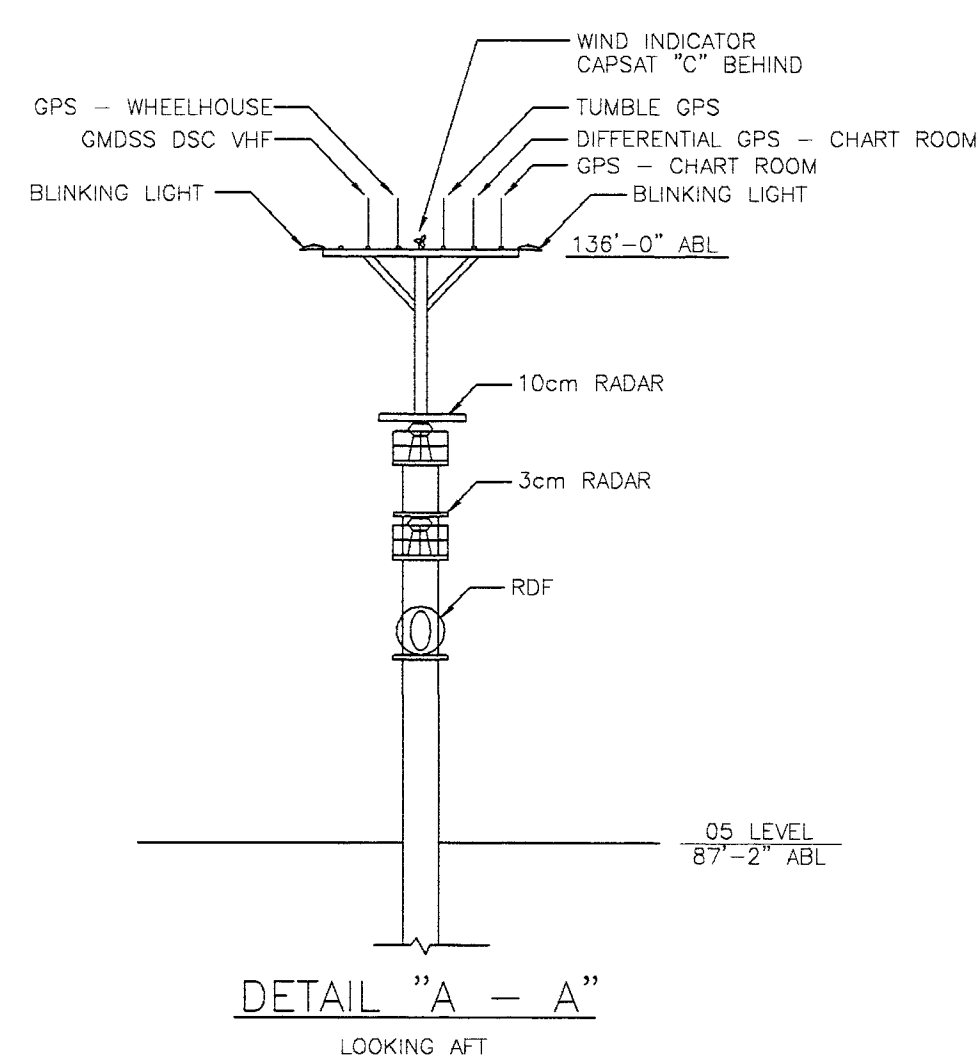
NOTES
 1. THIS DRAWING SUPERSEDES NAVSEA DWG NO. 101-6251973, OUTBOARD PROFILE REV. A AND NAVSEA DWG NO. 101-6251222, INBOARD PROFILE REV. A.

APPROVALS			
DWNER	USCU	DATE	SCALE
C.R. CUSHING & CO., INC. NEW YORK			
T.S. STATE OF MAINE MA DESIGN S4-M-MA154b			
GENERAL ARRANGEMENT OUTBOARD & INBOARD PROFILE			
DWN BY	VSA	CHECKED BY	KM
DATE	2/19/97	DATE	6/5/97
DWG NO. 1993-S9-1		PROJECT NO. 1993	
SCALE: 1/16"=1'-0"		SHEET 1 OF 6	

REVISIONS

ZONE	REV	DESCRIPTION	DATE	APPROVAL

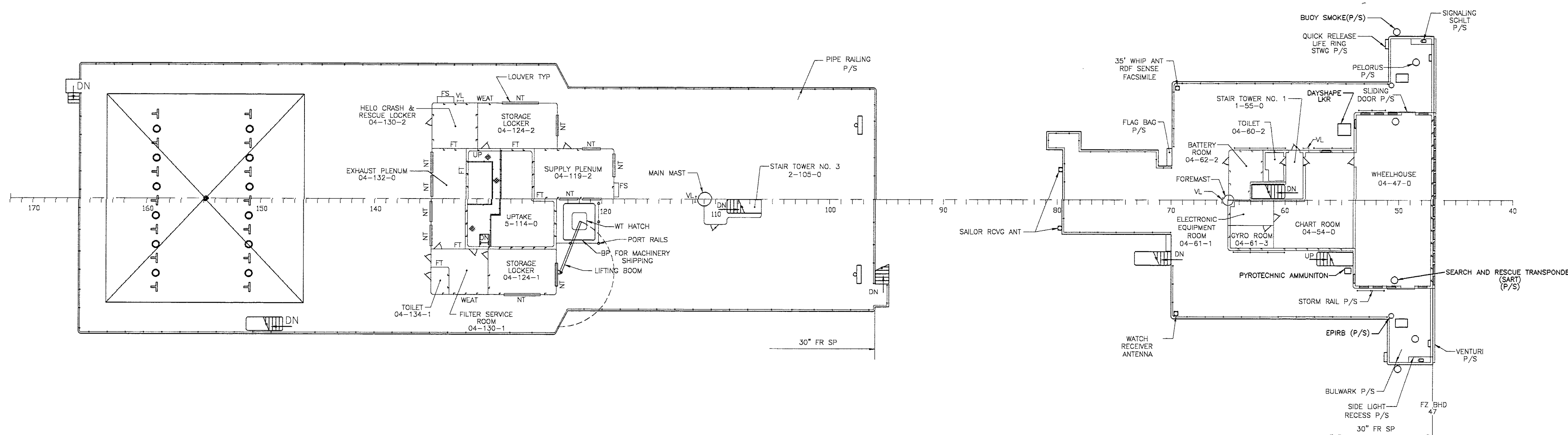
06 LEVEL
115'-5" ABL AT CL



ABBREVIATIONS

- AO ACCESS OPENING
- FS FIRE STATION
- FT FUME TIGHT
- FZ FIRE ZONE
- H HATCH
- LKR LOCKER
- MH MAN HOLE
- NT NON TIGHT
- P/S PORT & STARBOARD
- S SCUTTLE
- T/S TOILET/SHOWER
- TRK TRUNK
- VL VERTICAL LADDER
- WEAT WEATHER TIGHT
- WT WATER TIGHT

05 LEVEL
91'-2" ABL AT CL



04 LEVEL
78'-8" ABL AT CL

NOTES

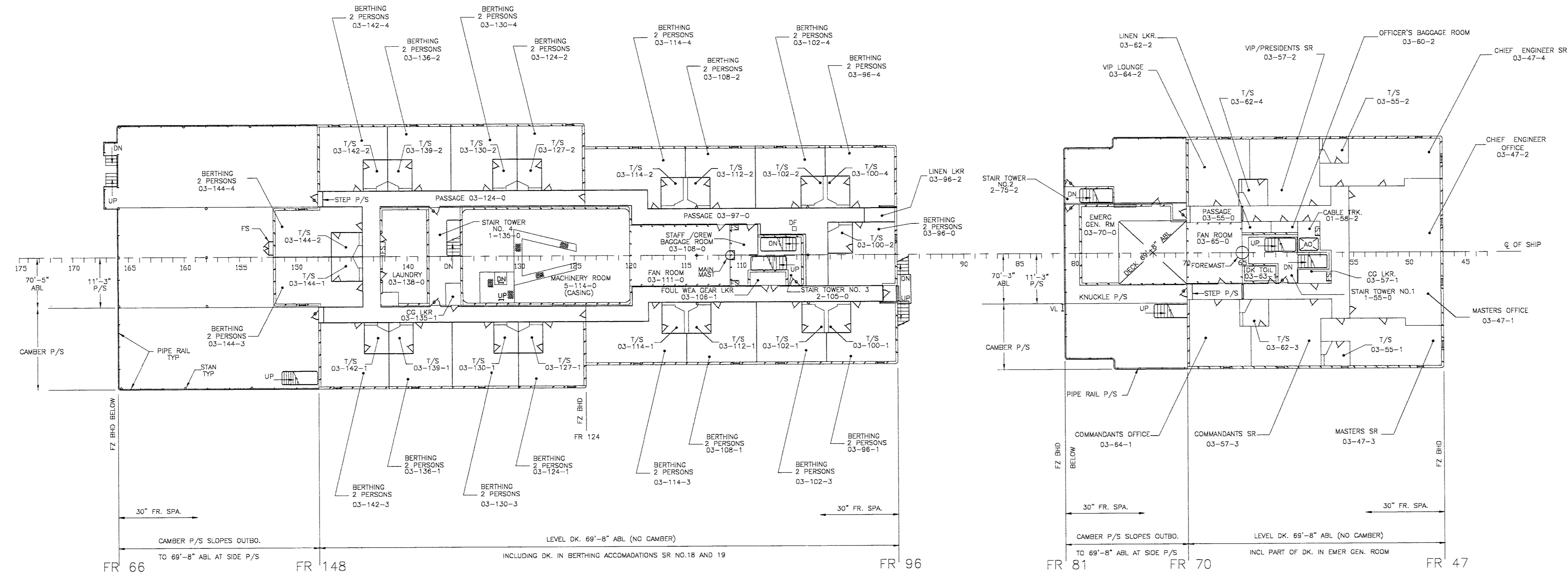
1. THIS DRAWING SUPERSEDES NAVEA DWG NO. 101-5251972, GENERAL ARRANGEMENT 04 LEVEL AND ABOVE, REV.0

APPROVALS

OWNER	USCG				
C.R. CUSHING & CO., INC. NEW YORK					
T.S. STATE OF MAINE MA DESIGN S4-M-MA154b					
TITLE GENERAL ARRANGEMENT 04 LEVEL AND ABOVE					
DWN BY	R.M.	CHECKED BY	K.M.	PROJECT NO.	1993
DATE	2/19/97	DATE	5/30/97	SCALE:	1/16"=1'-0"
DWG NO. 1993-S9-1				SHT 2 OF 6	REV 2

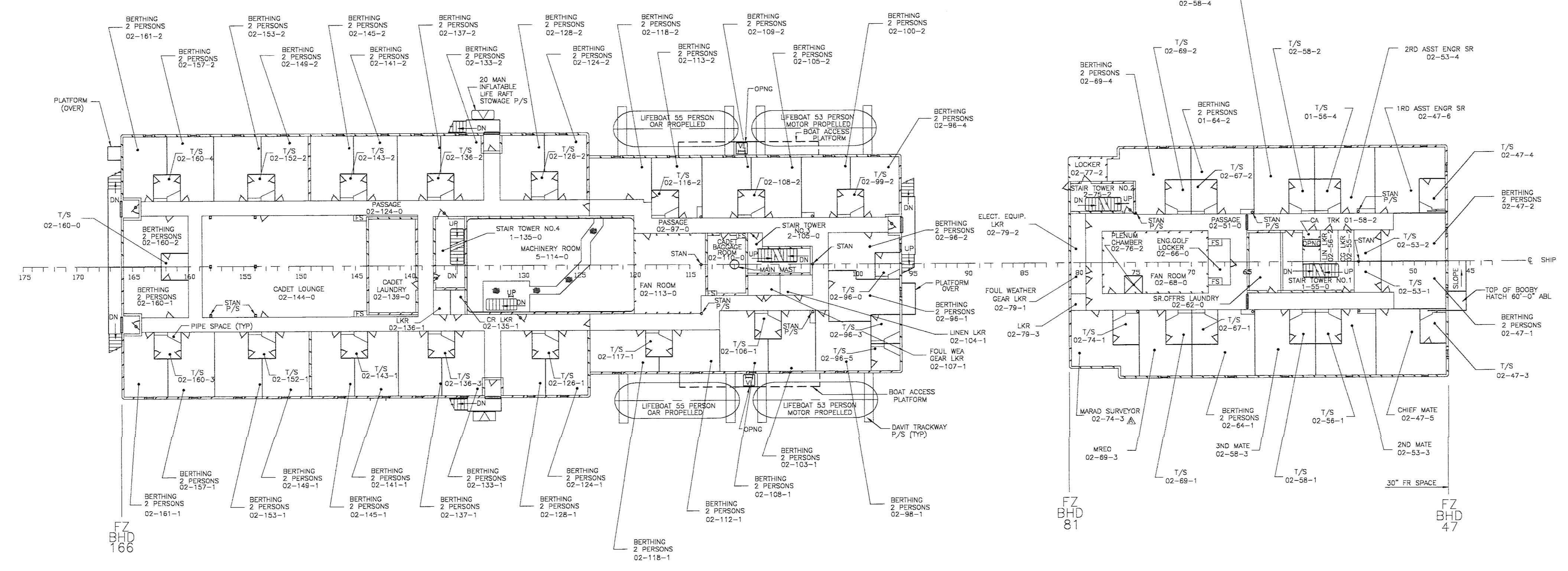
PLDT PARAMETER TABLE: STANDARD
PLDT SCALE (PLDT UNITS = DRAWING UNITS): 1/16" = 1'-0"

REVISIONS				
ZONE	REV	DESCRIPTION	DATE	APPROVAL
B-2	A	CHANGED SPACE 02-74-3 FROM MRED TO MARAD SURVEYOR. SPACE 02-69-3 BECOMES MREG.	03-14-97	K.M.



03 LEVEL

- ABBREVIATIONS**
- AO ACCESS OPENING
 - DF DRINKING FOUNTAIN
 - FT FUME TIGHT
 - FZ FIRE ZONE
 - H HATCH
 - LKR LOCKER
 - MH MAN HOLE
 - NT NON TIGHT
 - P/S PORT & STARBOARD
 - S SCUTTLE
 - T/S TOILET/SHOWER
 - TRK TRUNK
 - VL VERTICAL LADDER
 - WT WATER TIGHT



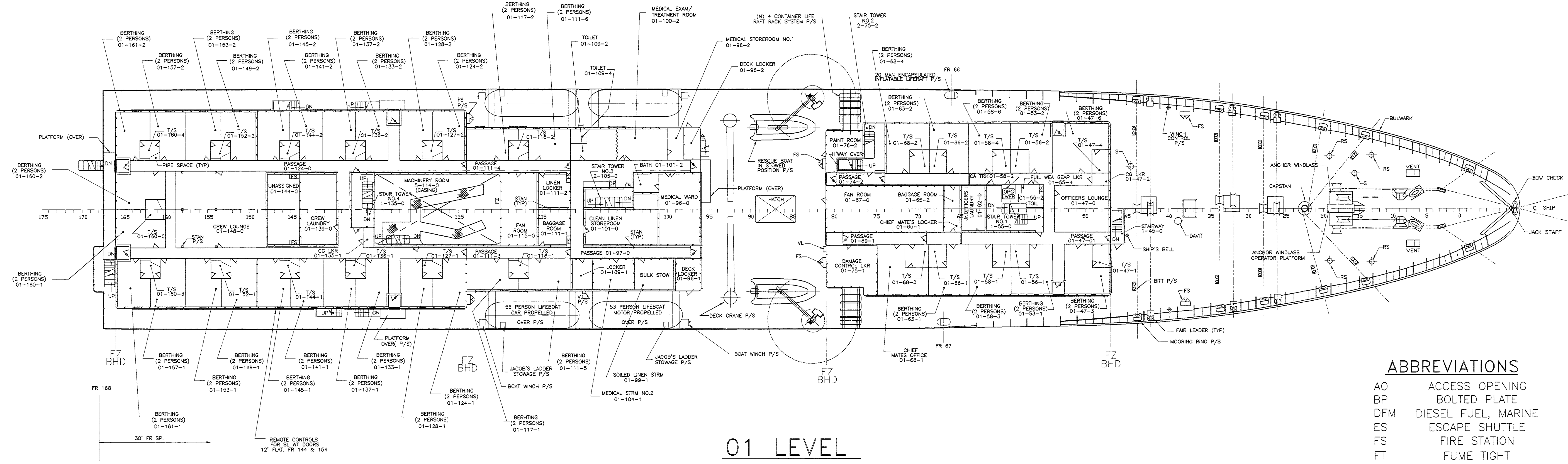
02 LEVEL

NOTES

1. THIS DRAWING SUPERSEDES NAVSEA DWG NO. 101-6251970, GENERAL ARRANGEMENT 02 LEVEL, REV. C AND NAVSEA DWG NO. 101-6251971, GENERAL ARRANGEMENT 03 LEVEL, REV. D

APPROVALS			
OWNER	USCG		
C.R. CUSHING & CO., INC. NEW YORK			
T.S. STATE OF MAINE MA DESIGN S4-M-MA1546			
TITLE GENERAL ARRANGEMENT 02 LEVEL AND 03 LEVEL			
DWN BY	RM	CHECKED BY	PROJECT NO.
DATE	2/19/97	DATE	5/30/97
DWG NO.	1993-S9-1	SCALE:	1/16"=1'-0"
		SHT	2
		OF	6
		REV	2

PLOT PARAMETER TABLE: STANDARD
PLOT SCALE (PLOT UNITS = DRAWING UNITS): 1/16" = 1'-0"



01 LEVEL

52'-0" ABL AT CL (FR 47 AFT)

ABBREVIATIONS

- AO ACCESS OPENING
- BP BOLTED PLATE
- DFM DIESEL FUEL, MARINE
- ES ESCAPE SHUTTLE
- FS FIRE STATION
- FT FUME TIGHT
- FZ FIRE ZONE
- H HATCH
- LKR LOCKER
- MH MAN HOLE
- NT NON TIGHT
- OT OIL TIGHT
- P/S PORT & STARBOARD
- PF PLATFORM
- RS SHUTTLE
- S SCUTTLE
- T/S TOILET/SHOWER
- TRK TRUNK
- VL VERTICAL LADDER
- WT WATER TIGHT

REVISIONS				
ZONE	REV	DESCRIPTION	DATE	APPROVAL
B-4	A	REMOVED BULKHEAD	4/30/97	KH

D

D

C

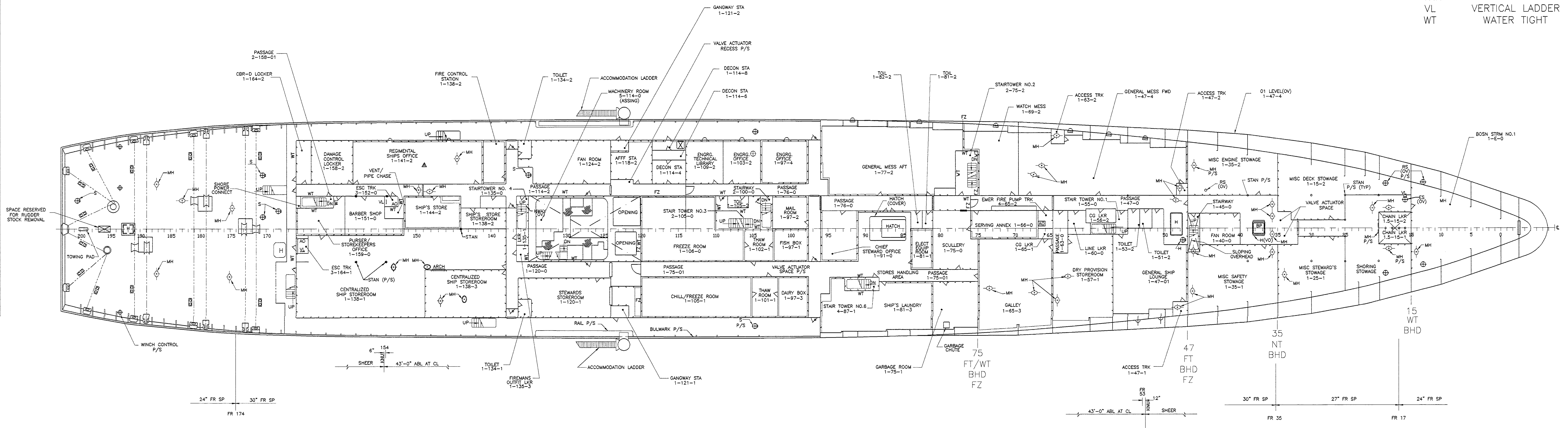
C

B

B

A

A



MAIN DECK

43'-0" ABL AT CL (BET FR 47 AND FR 154)

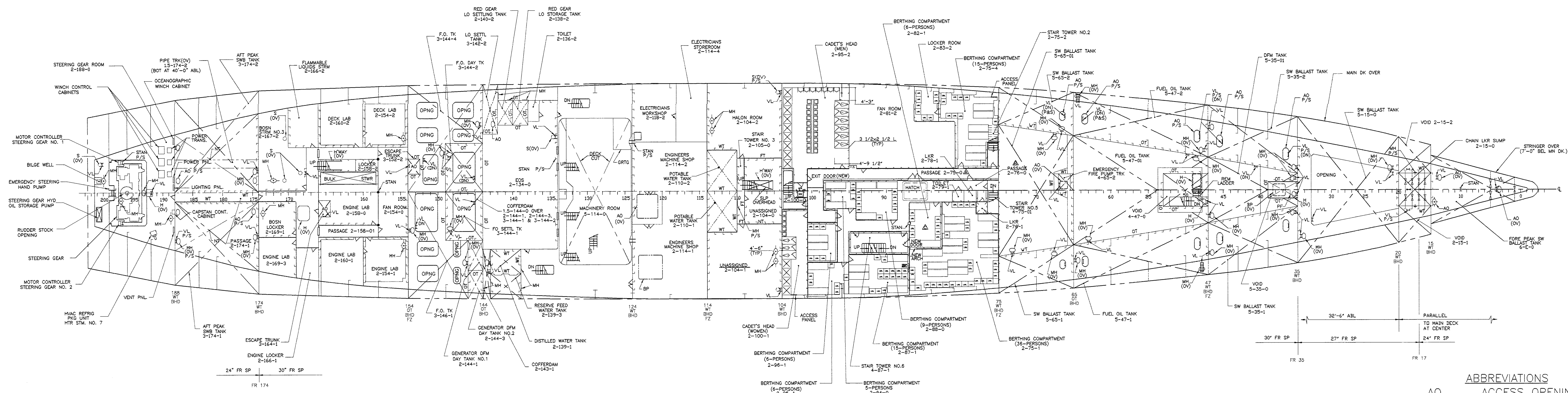
NOTES

1. THIS DRAWING SUPERSEDES NAVSEA DWG NO. 101-6251968, GENERAL ARRANGEMENT 12'-0" FLAT, REV D AND NAVSEA DWG NO. 101-6252074, GENERAL ARRANGEMENT TANK TOP, REV C.

APPROVALS			
OWNER	USCG		
	C.R. CUSHING & CO., INC. NEW YORK		
	T.S. STATE OF MAINE MA DESIGN S4-M-MA154b		
TITLE	GENERAL ARRANGEMENT MAIN DECK AND 01 LEVEL		
DWN BY	RM	CHECKED BY	KM
DATE	2/12/97	DATE	5/30/97
DWG NO.	1993-S9-1	SCALE:	1/16"=1'-0"
		SHT	4
		OF	6
		REV	3

PLOT PARAMETER TABLE: STANDARD
 PLOT SCALE (PLOT UNITS = DRAWING UNITS): 1/16" = 1'-0"

REVISIONS				
ZONE	REV	DESCRIPTION	DATE	APPROVAL
C-2	A	ASSIGN COMP. NO. 2-75-0 ACCOMMODATION PASSAGE	2/21/97	K.M.
C-2	B	ASSIGN COMP. NO. 2-76-0 ACCOMMODATION PASSAGE	2/21/97	K.M.
C-2	C	REMOVE BULKHEAD AND LOCKER ROOM 2-82-3	4/11/97	K.M.
C-2	D	REARRANGE BUNKS AND LOCKERS TO SHOW AS-BUILT CONDITION	4/30/97	K.M.



SECOND DECK
32'-6" FLAT

ABBREVIATIONS

AO	ACCESS OPENING
BP	BOLTED PLATE
DF	DRINKING FOUNTAIN
FO	FUEL OIL
FT	FUME TIGHT
FZ	FIRE ZONE
H	HATCH
LKR	LOCKER
LO	LUBE OIL
MH	MAN HOLE
NT	NON TIGHT
OT	OIL TIGHT
P/S	PORT & STARBOARD
PF	PLATFORM
REM	REMOVABLE
S	SCUTTLE
T/S	TOILET/SHOWER
TRK	TRUNK
VL	VERTICAL LADDER
WT	WATER TIGHT

NOTES

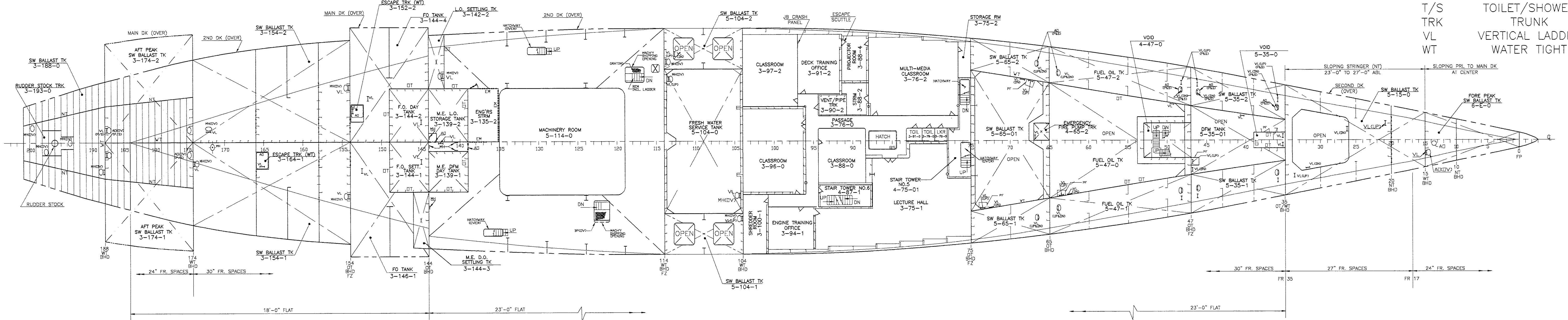
1. THIS DRAWING SUPERSEDES NAVSEA DWG NO. 801-5251226, GENERAL ARRANGEMENT SECOND DECK, REV.B AND NAVSEA DWG NO. 101-6251219, GENERAL ARRANGEMENT 23'-0" FLAT, REV.D

APPROVALS

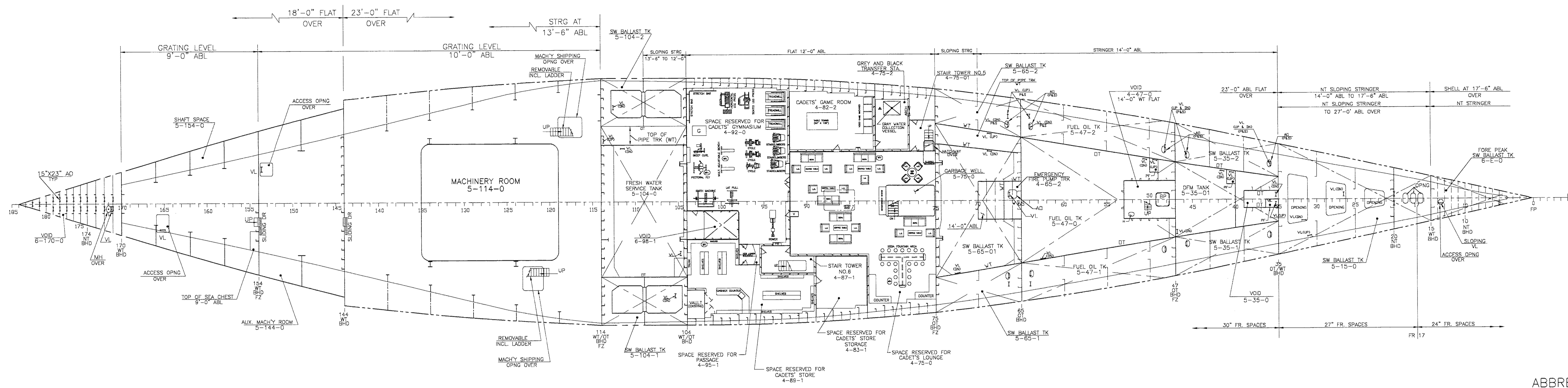
OWNER	USCC		
	C.R. CUSHING & CO., INC. NEW YORK		
	T.S. STATE OF MAINE MA DESIGN S4-M-MA154b		
TITLE	GENERAL ARRANGEMENT SECOND DK AND 23'-0" FLAT		
DWG NO.	1993-S9-1	DATE	5/30/97
		DATE	2/12/97
		SCALE	1/16"=1'-0"
		PROJECT NO.	1993
		CHECKED BY	KM
		VSA/RM	
		DATE	2/12/97
		DATE	5/30/97
		SCALE	1/16"=1'-0"
		DWG NO.	1993-S9-1
		SHEET	5 OF 6
		REV	4

PLOT PARAMETER TABLE: STANDARD
PLOT SCALE (PLOT UNITS = DRAWING UNITS): 1/16" = 1'-0"

23'-0" FLAT

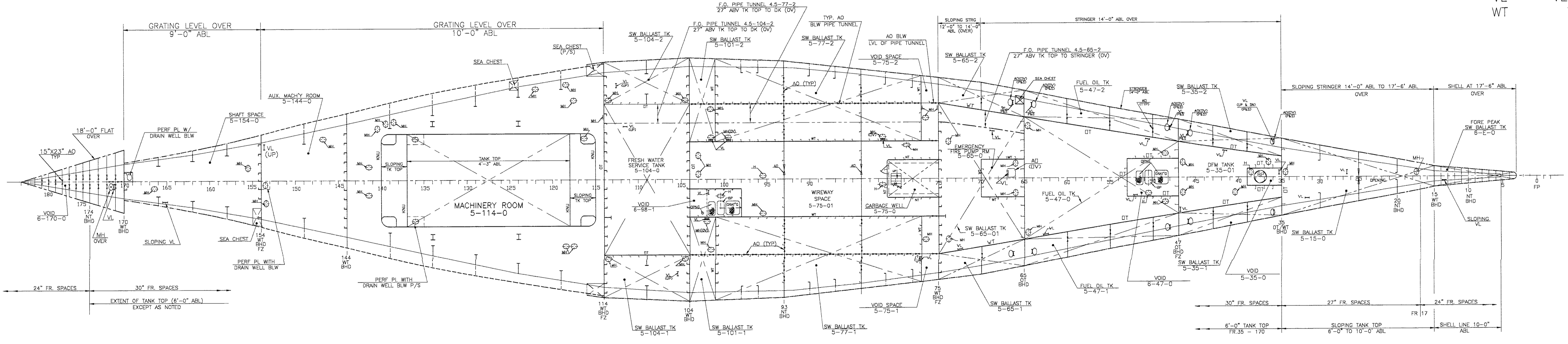


REVISIONS				
ZONE	REV	DESCRIPTION	DATE	APPROVAL
D-3	A	ADDED TANK "GRAY WATER COLLECTION VESSEL"	3/19/97	KAM



12'-0" FLAT

- ABBREVIATIONS**
- AO ACCESS OPENING
 - BP BOLTED PLATE
 - DFM DIESEL FUEL, MARINE
 - FT FUME TIGHT
 - FZ FIRE ZONE
 - H HATCH
 - LKR LOCKER
 - MH MAN HOLE
 - NT NON TIGHT
 - OT OIL TIGHT
 - P/S PORT & STARBOARD
 - PF PLATFORM
 - S SCUTTLE
 - TRK TRUNK
 - VL VERTICAL LADDER
 - WT WATER TIGHT



TANK TOP

NOTES

1. THIS DRAWING SUPERSEDES NAVSEA DWG NO. 101-6251968, GENERAL ARRANGEMENT 12'-0" FLAT, REV.D AND NAVSEA DWG NO. 101-6222074, GENERAL ARRANGEMENT TANK TOP, REV.C.

APPROVALS			
OWNER	USCC		
C.R. CUSHING & CO., INC. NEW YORK			
T.S. STATE OF MAINE MA DESIGN S4-M-MA154b			
TITLE GENERAL ARRANGEMENT 12'-0" FLAT AND TANK TOP			
DWN BY	VSA	CHECKED BY	KM
DATE	2/12/97	DATE	6/2/97
DWG NO. 1993-S9-1		PROJECT NO.	1993
		SCALE:	1/16"=1'-0"
		SHT	6
		OF	6
		REV	3

PLOT PARAMETER TABLE: STANDARD

PLOT SCALE (PLOT UNITS = DRAWING UNITS): 1/16" = 1'-0"