

STORES & TANK CAPACITIES

SHIP'S CARGO TANKS 95% FULL ----- 20652.8 BBLS
 SHIP'S WING CARGO TANKS 95% FULL ----- 2426.0 BBLS
 SHIP'S DIESEL OIL TANKS 95% FULL ----- 534.68 TONS
 SHIP'S SERVICE DIESEL OIL TANKS 95% FULL ----- 10.50 TONS
 BALLAST TANKS 100% FULL ----- 720.72 TONS
 FRESH WATER TANKS 100% FULL ----- 24.06 TONS
 STORES CAPACITY ----- 10,861 CU FT

COMPLEMENT

OFFICERS ----- 11
 CREW ----- 30
 TRANSIENTS ----- 12
 TOTAL 53

POWER PLANT & SPEED

PROPULSION DIESEL GENERATORS - 2 - ALCO FUEL TS, INC. MODEL 251B DIESEL,
 16 CYLINDERS, 4 CYCLE, TURBOCHARGED, 2000 BHP - GENERAL ELECTRIC CO.
 TYPE MCF, 750 VOLTS D.C. 1400 K.W. GENERATOR.
 PROPULSION MOTORS - 2 - GENERAL ELECTRIC CO. TYPE MCF, 750 VOLTS D.C.,
 1700 H.P. @ APPROXIMATE 145 R.P.M.

PROPELLER

3 BLADES - STARBOARD RIGHT - AND - PORT, LEFT - HAND - 11'-0" DIAMETER,
 EFFECTIVE PITCH - 12'-3"

GENERATING PLANT

300 K.W. DIESEL GENERATORS - 2 - CATERPILLAR TRACTOR CO. D 337 D
 DIESEL - GENERAL ELECTRIC CO. TYPE AT1 GENERATOR, 3 PHASE, 450 VOLTS A.C.
 481 AMPERES, 375 K.V.A.
 100 K.W. DIESEL GENERATOR - 1 - CATERPILLAR TRACTOR CO. D 34 Z D DIESEL
 GENERAL ELECTRIC CO. TYPE AT1 GENERATOR, 3 PHASE, 450 VOLTS A.C.
 180 AMPERES, 125 K.V.A.

STEERING GEAR DATA

HYDE WINDLASS CO. ELECTRO-HYDRAULIC (ANGLE FROM 3 AND 5 IN ALIDE)
 STEERING GEAR.

REFRIGERATING PLANT

YORK CORPORATION - 2 REFRIG. COMPRESSORS - 1.8 TON - FREON 12

DECK MACHINERY DATA

4 LAKE SHORE INC. ELECTRO-HYDRAULIC CARGO WINCHES.
 1 HYDE WINDLASS COMPANY HORIZONTAL BON ANCHOR WINDLASS
 1 HYDE WINDLASS COMPANY VERTICAL STREAM ANCHOR WINDLASS

LIFEBOATS & DAVIT DATA

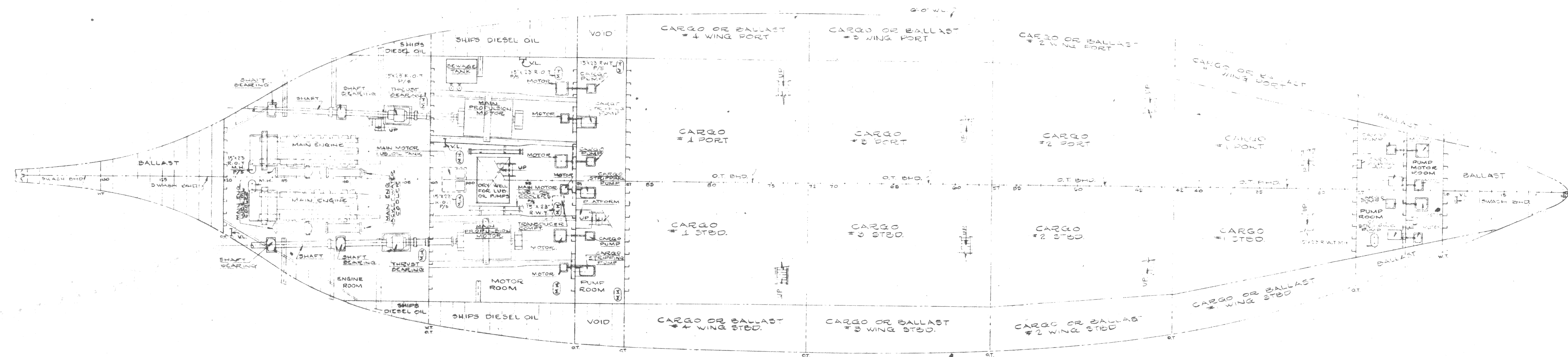
2 MARINE SAFETY EQUIPMENT CORP. 60 PERSON - 28' x 9'-9 1/2" x 4'-1 1/2" SELF PROPELLED
 LIFE BOATS.
 2 SETS - MARINE SAFETY EQUIPMENT CORP. - 30-70 GRAVITY DAVITS COMPLETE
 1 - MARINE SAFETY EQUIPMENT CORP. - 16 FT. WORK BOAT - DIESEL M185G

GENERAL CHARACTERISTICS

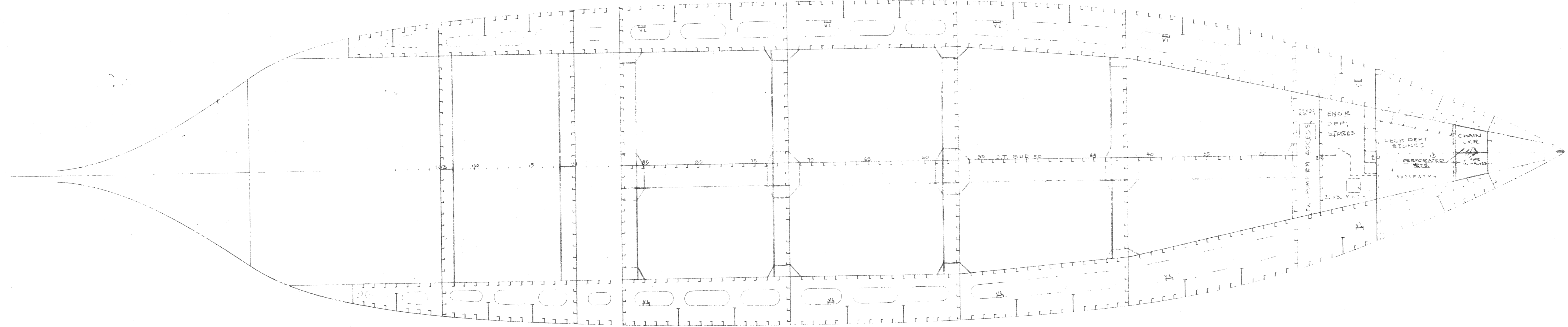
LENGTH OVERALL ----- 302'-0"
 LENGTH ON THE DESIGN WATERLINE, FR. C TO 145 ----- 290'-0"
 DRAFT, MOLDED (CANTLING) ----- 24'-0"
 DRAFT, MOLDED TO DESIGN WATERLINE AMIDSHIP ----- 19'-0"
 BEAM, MAXIMUM, MOLDED, AMIDSHIP ----- 60'-11"
 DEPTH, MOLDED TO THE MAIN DECK AT THE
 SIDE AB. FR. 58 1/2 (LBP/2) ----- 26'-6"
 DEPTH, MOLDED TO MAIN DECK AT THE
 SIDE AB. FR. 93 (MINIMUM) ----- 26'-0"
 GROSS TONNAGE (APPROX.) ----- 3200
 NET TONNAGE (APPROX.) ----- 1500
 EQUIPMENT NUMBER (AEL) ----- 2-327
 SEND OVERLIST
 DIFF. W. MENT
 PORTS

GENERAL DIMENSIONS & DATA

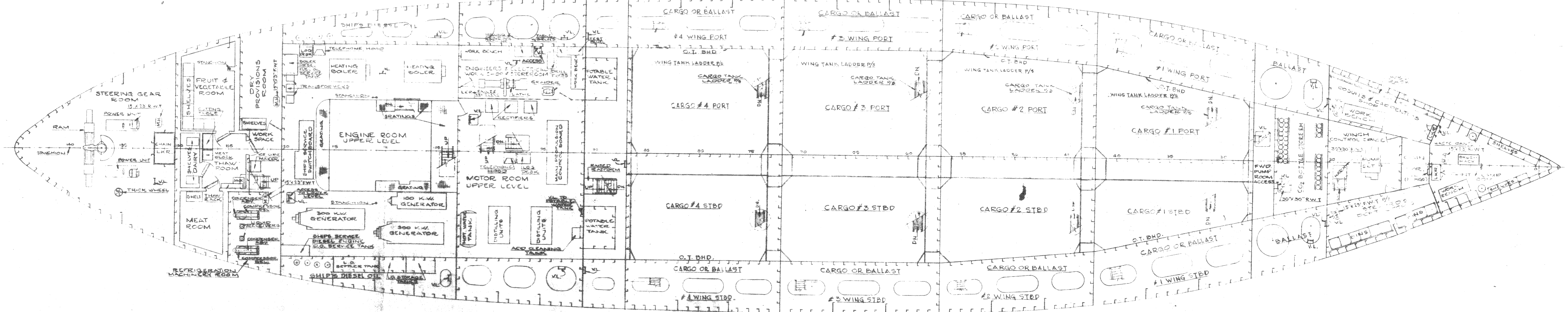
DESIGN TI - MET-24 a



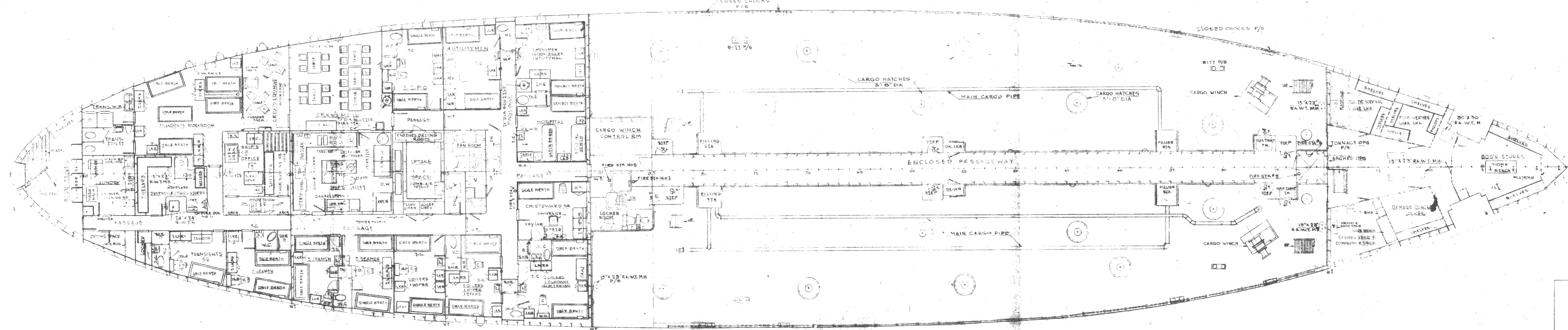
INNER BOTTOM
 PUMP ROOM FLAT
 DESIGN TITMET 241
 SHEET NO. 3 OF 4



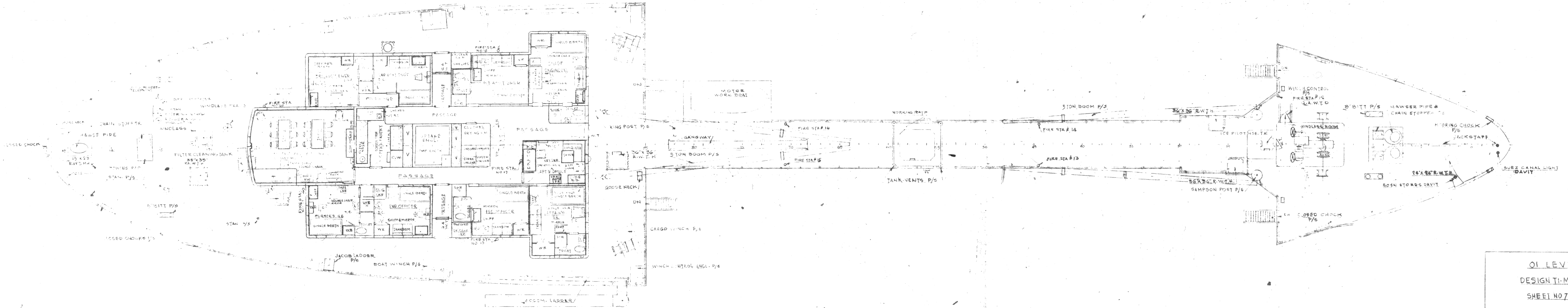
SECOND PLATFORM
 DESIGN TI-MET 44
 SHEET NO. 44-11



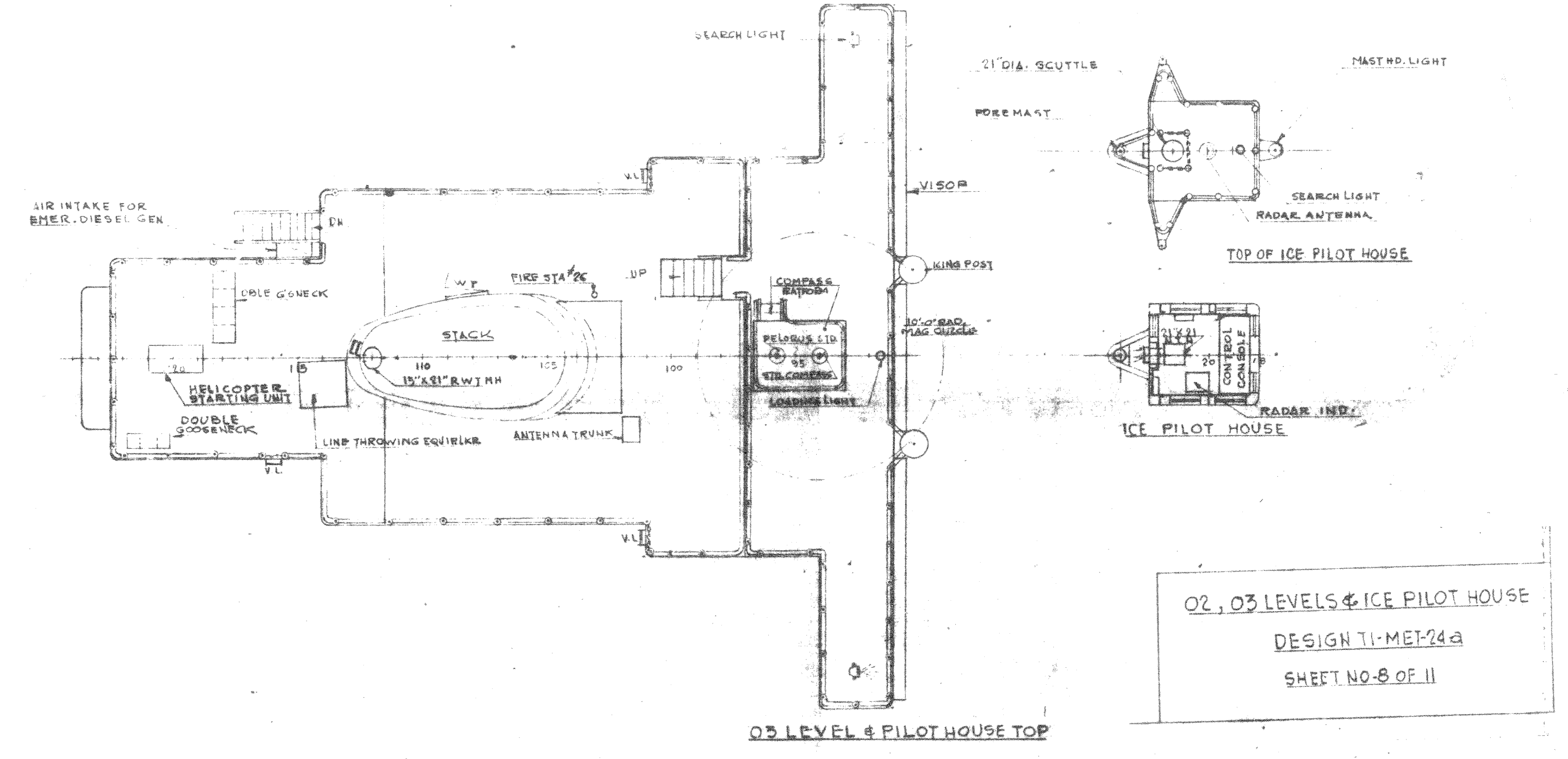
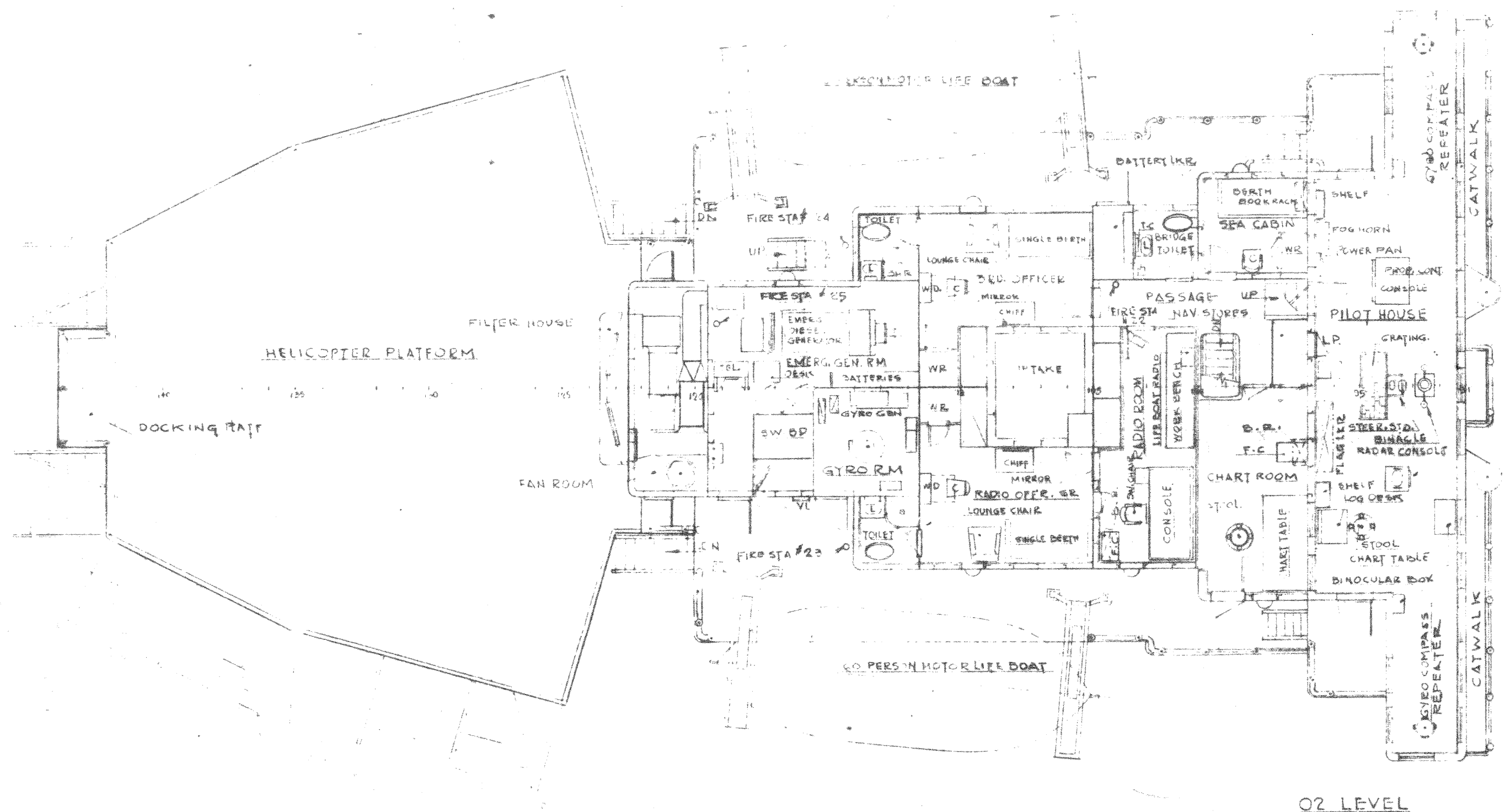
FIRST PLATFORM
 DESIGN T-14-1-24
 SHEET NO. 5 OF 11



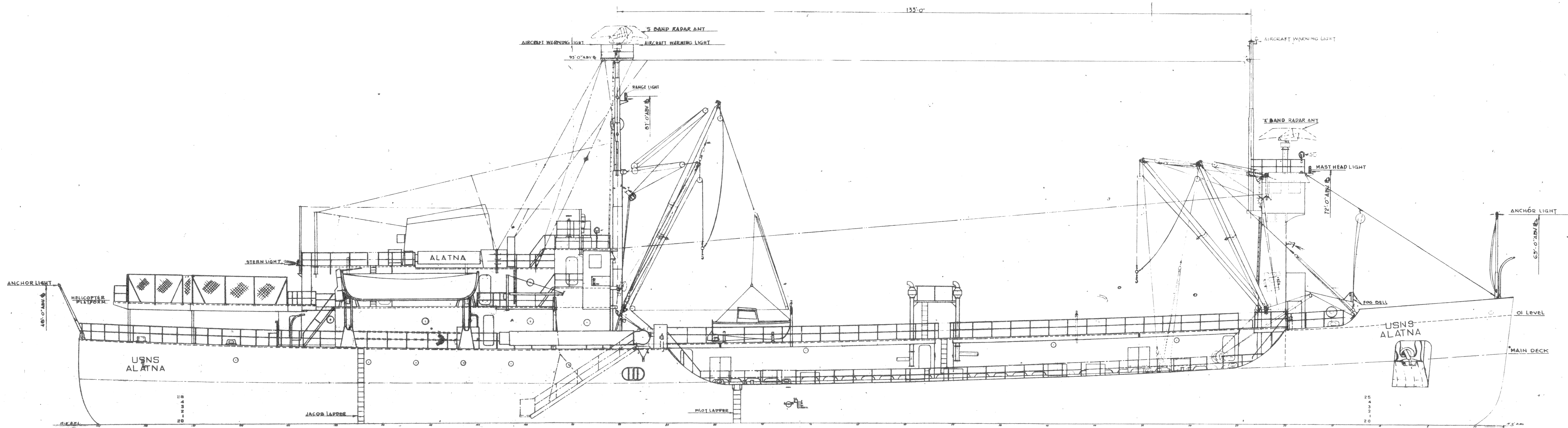
MAIN DECK
DESIGN TI-MET-248
SHEET NO 6 OF 11



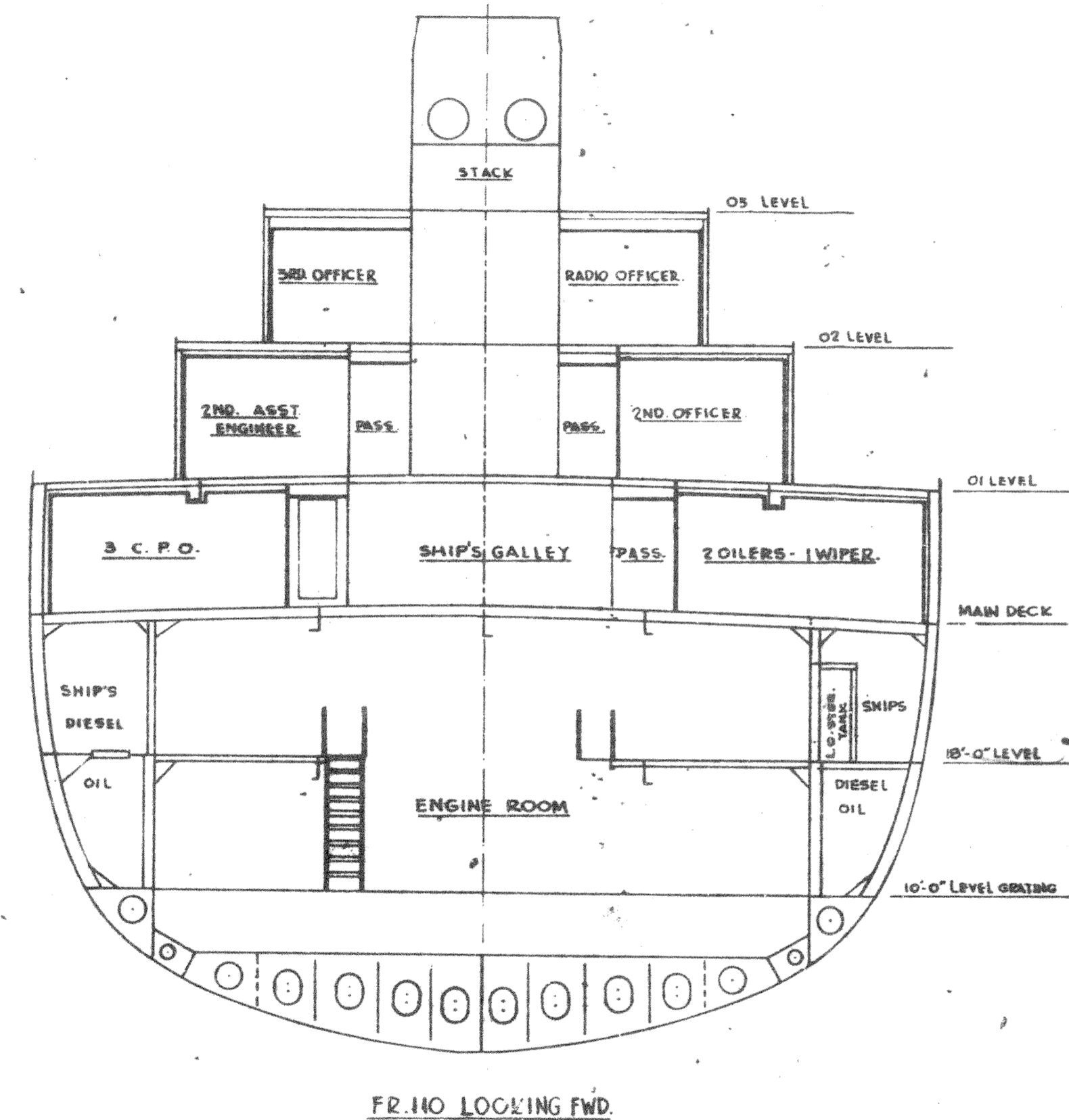
OI LEVEL
 DESIGN TI-MET-24a
 SHEET NO 7 OF 11



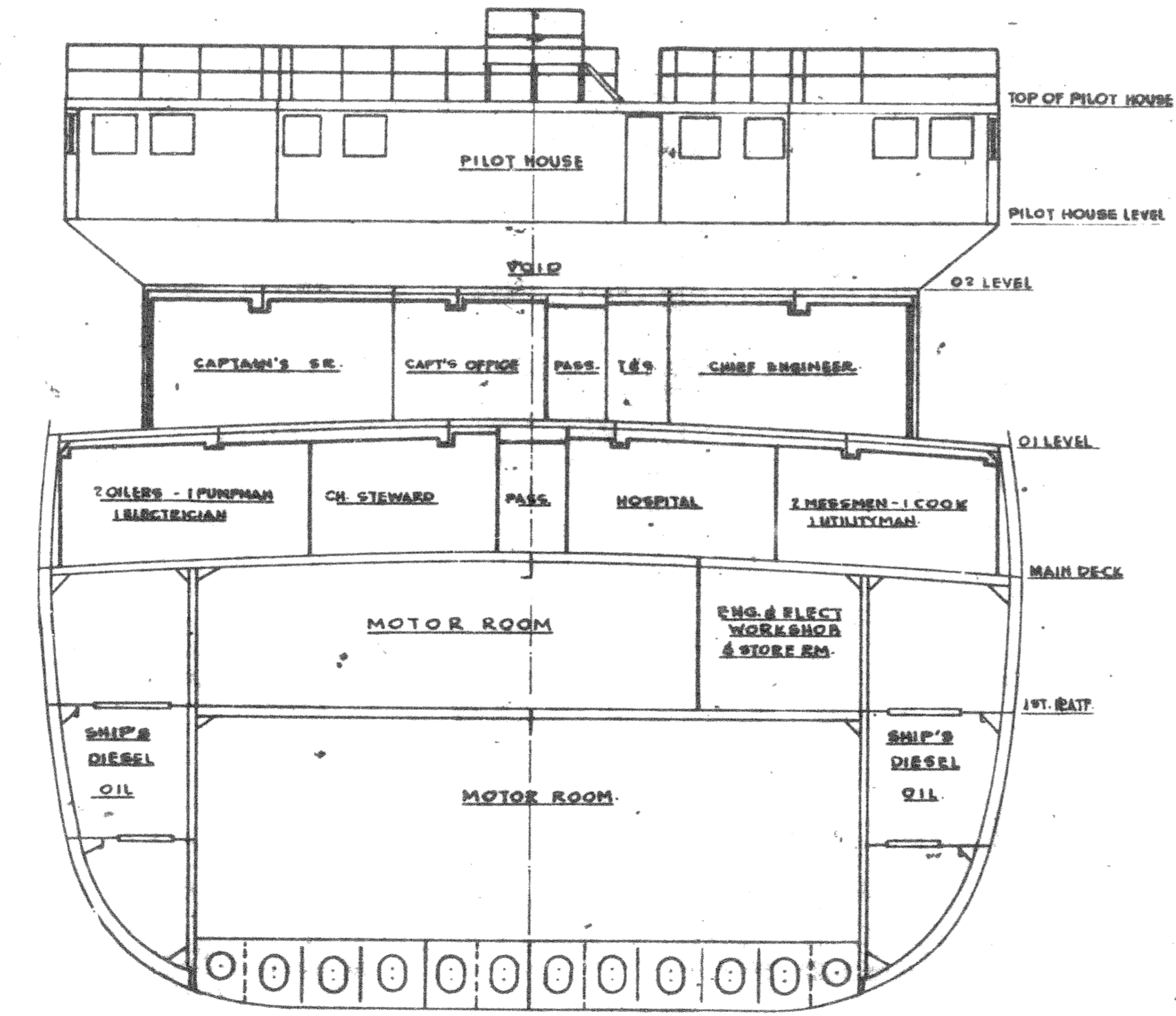
02, 03 LEVELS & ICE PILOT HOUSE
 DESIGN TI-MET-24a
 SHEET NO. 8 OF 11



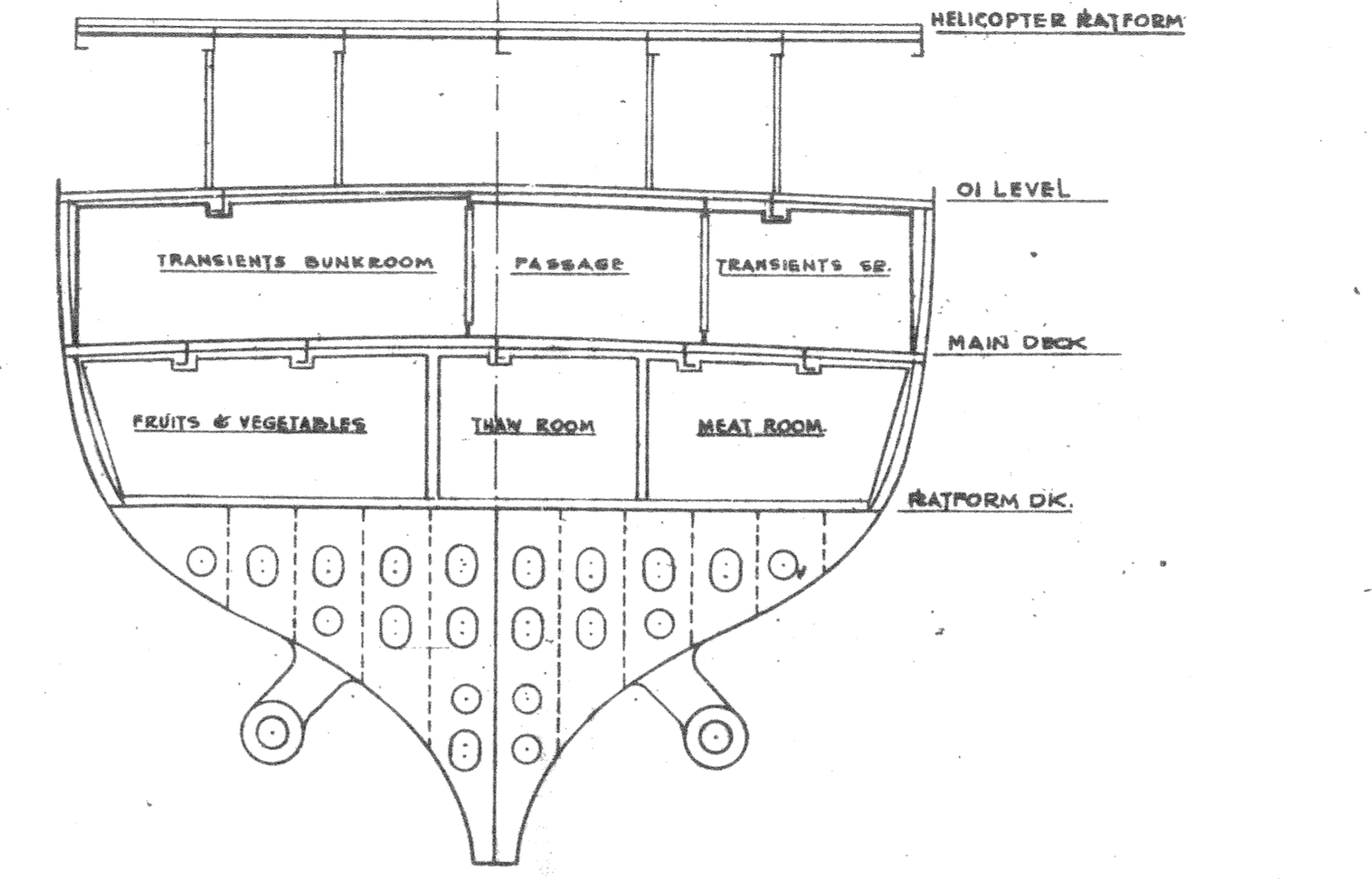
OUTBOARD PROFILE
 DESIGN TI-MET-24a
 SHEET NO-10 OF 11



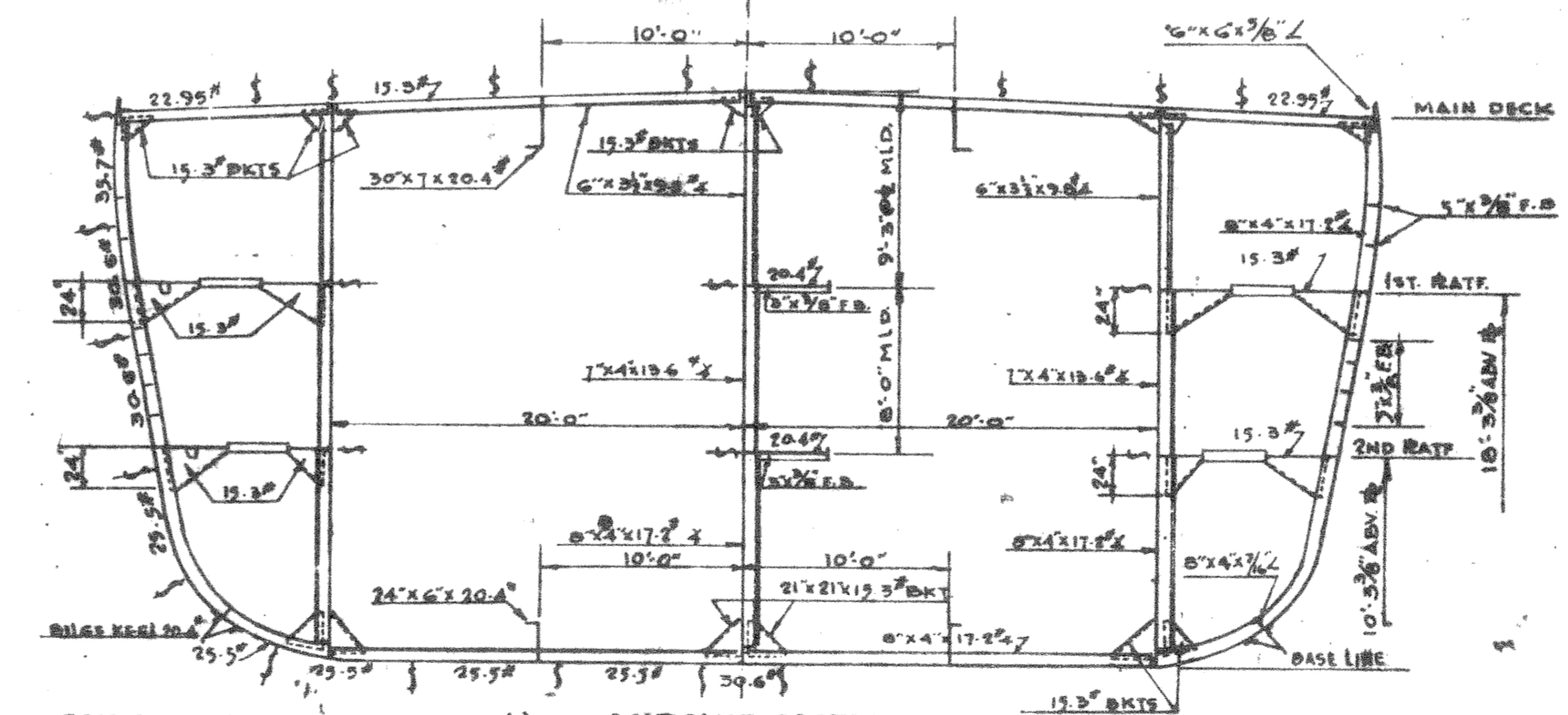
FR. 110 LOOKING FWD.



FR. 92 LOOKING AFT.

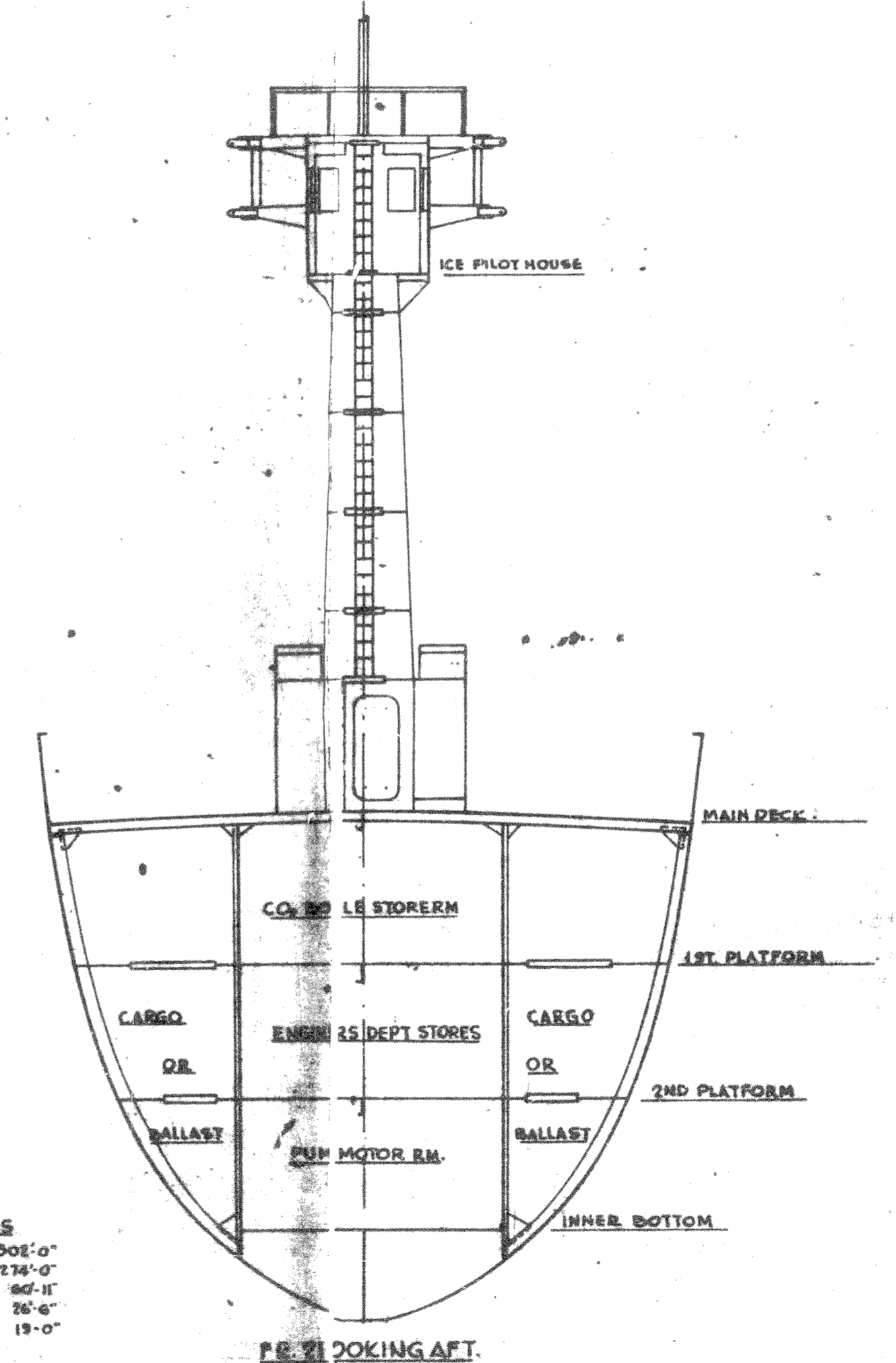


FR. 121 LOOKING FWD.

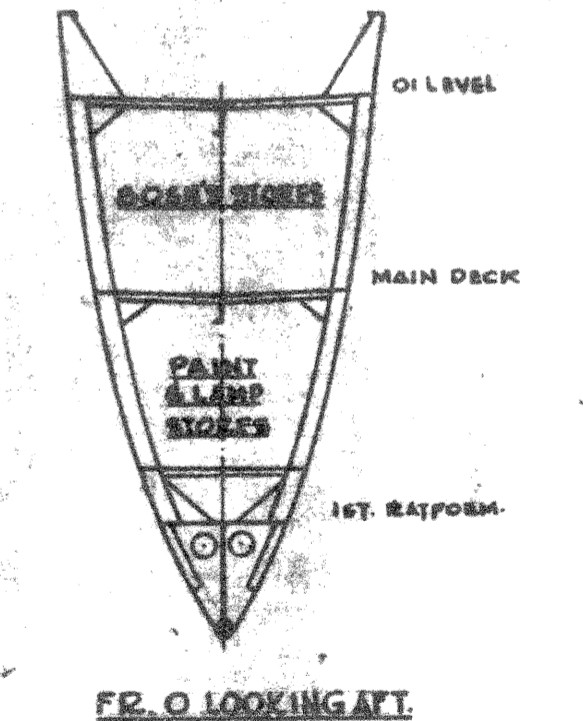


EQUIPMENT TO A.B.S. NUMERICAL C-37(5)
 2 BOWER ANCHORS (STOCKLESS) EACH 5600#
 1 SPARE BOWER ANCHOR (STOCKLESS) 4760#
 1 STREAM ANCHOR (STOCKLESS) 2100#
 270 FATHOMS 1 1/4\"/>

PRINCIPAL DIMENSIONS
 LENGTH OVERALL 302'-0"
 LENGTH BET PERLPS 274'-0"
 MOLDED BREADTH (MAX) 80'-11"
 MOLDED DEPTH - MAIN DECK AT FRGWL 26'-6"
 DESIGN WATER LINE 19'-0"
 SCANTLING DRAFT 24'-0"



FR. 21 LOOKING AFT.



FR. 0 LOOKING AFT.

TRANSVERSE SECTIONS
 DESIGN TI-ME-244
 SHEET NO. II OF II