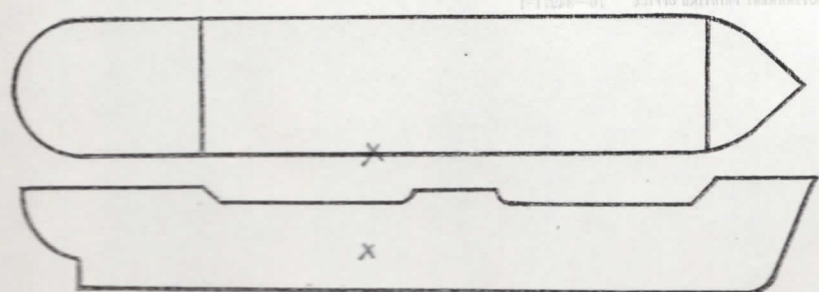


CONFIDENTIAL

UNITED STATES COAST GUARD  
REPORT ON U. S. MERCHANT VESSEL WAR ACTION CASUALTY

To: Commandant, U. S. Coast Guard, Washington, D. C.  
 Ship *S/S ANDREW JACKSON* Service *OCEAN FREIGHT.*  
 Owner *WATERMAN SS CORP.* Operator *W.S.A.*  
 Information furnished by *MASTER.* Date *19 August 1944*

LINE No.	QUESTIONS	ANSWERS
1	Year built and propulsion	Built <i>1920</i> Propulsion <i>STEAM.</i>
2	Tonnage	Gross <i>5990</i> Net <i>3709</i>
3	Draft loaded (maximum allowed)	Fwd <i>25' 06" (M)</i> Aft _____
4	Draft when attacked	Fwd <i>10</i> Aft <i>14</i>
5	Cargo on board (any deck)	Nature <i>BALLAST</i> Tons _____
6	Voyage	From <i>CRISTOBAL</i> To <i>KEY WEST</i>
7	Were routing orders followed	<i>YES</i>
8	Any criticism of orders	<i>NO.</i>
9	Weather at time of attack	Weather <i>CLEAR</i> Sea <i>CALM.</i>
10	Was enemy sighted? When	<i>No.</i>
11	Any friendly ships in sight	<i>No.</i>
12	Were navigation lights on	<i>No.</i>
13	Date and time of attack	Date <i>7/12/42</i> Time <i>2112</i>
14	Position	Latitude <i>23° 32' N</i> Longitude <i>81° 02' W</i>
15	Nature of attack (Give data)	<i>TORPEDO</i>
16	Number of hits	<i>2</i>
17	Location of hits (Mark diagram)	<i>1-MACH; S</i>
18	Effect of hits	<i>SANK SHIP.</i>
19	Was ship armed? What type	<i>YES</i>
20	Was armament used? State result	<i>No.</i>
21	Any explosions or fires*	Ship <i>NO.</i> Cargo <i>NO.</i>
22	Was deck ruptured	<i>YES</i>
23	Did ship break in two	<i>NO</i>
24	Was SOS sent	<i>YES</i>
25	Ship's speed	Normal <i>10.5</i> When attacked <i>11.0</i> When abandoned <i>STOP.</i>
26	Time abandoned, sunk	Abandoned <i>2117 (5 min.)</i> Sunk <i>2212 (2 hrs)</i>
27	Was ship reboarded	By whom <i>NO</i> When _____
28	Was ship brought in	How <i>NO</i> Approximate damage <i>SUNK.</i>



\*Fill in this diagram to show attack hits, fires, etc.

Indicate by star (\*) rafts, floats, or suits used as temporary refuge in water before rescue by lifeboats.

LINE No.	QUESTIONS	ANSWERS			
29	Lifeboats.....	Number carried	4	Which used	3
30	Lifeboats.....	Number lost	1	How	TORP. EXPLOSION.
31	Life rafts.....	Number carried	4	Which used	2*
32	Life rafts.....	Number lost	2	How	NOT NEEDED.
33	Life floats.....	Number carried	0	Which used	0
34	Life floats.....	Number lost	0	How	0
35	Lifesaving suits.....	Number carried	0	Number used	0
36	Were boats, etc., attacked.....	Attacked	NO	Casualties	0
37	Time in each boat, raft, etc.	3 Boat	12 HRS	2 Raft	<del>12 HRS</del>
		Boat		Raft	
				Float	
38	Rescued by and where.....	By	MOPE PORT	Where	NORTH COAST OF CUBA
39	Number of gun crew carried (military).....	Officers	1	Enlisted men	10
40	Number ship's crew carried.....	Officers	8	Radiomen	1
				Unlicensed	29
41	Number passengers and others carried.....	Passengers	0	Others	0
42	Total on board.....		49		
43	Number gun crew injured (military).....	Officers	0	Enlisted men	0
44	Number ship's crew injured.....	Officers	1	Radiomen	0
				Unlicensed	1
45	Number passengers and others injured.....	Passengers	0	Others	0
46	Number gun crew lost (military).....	Officers	0	Enlisted men	0
47	Number ship's crew lost.....	Officers	1	Radiomen	0
				Unlicensed	2
48	Number passengers and others lost.....	Passengers	0	Others	0
49	Total casualties.....	Injured	2	Lost	3
50	Persons lost by (Specify).....	Drowning	0	Fire	0
		Other causes	0	Shell or torpedo	3
51	Total rescued.....	Gun crew	11	Officers	7
		Unlicensed	27	Passengers	0
				Others	0
				Total	46
52	Persons saved by.....	Boats	46	Rafts	0
		Preservers	0	Other means	0
				No aid	0
53	Engineering watch below.....	Number on watch below	3	Number lost below	3
54	Number of look-outs.....		3		
55	Any defective material.....		NO		
56	Any personnel fault.....		NO		

COMMENTS, CRITICISMS, AND RECOMMENDATIONS

The comments, criticisms, or recommendations of survivors with respect to safety of seamen and ships involved in war actions are earnestly solicited by Headquarters in order that the fullest provision possible may be made for the safety of American ships and seamen.

\* Fill in this diagram to show attack hits, fires, etc.

