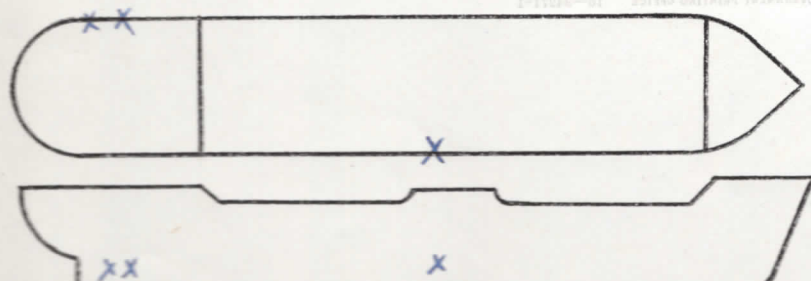


CONFIDENTIAL

UNITED STATES COAST GUARD
REPORT ON U. S. MERCHANT VESSEL WAR ACTION CASUALTY

To: Commandant, U. S. Coast Guard, Washington, D. C.
 Ship *M/s CAPE DECISION* Service *OCEAN - FREIGHT.*
 Owner *WATERMAN SS Co.* Operator *U.S.A.T.C.*
 Information furnished by *MASTER* Date *8 SEPTEMBER 1944.*

LINE No.	QUESTIONS	ANSWERS
1	Year built and propulsion.....	Built <i>1942</i> Propulsion <i>DIESEL</i>
2	Tonnage.....	Gross 5106 <i>5106</i> Net <i>2851</i>
3	Draft loaded (maximum allowed).....	Fwd <i>23'6" (M)</i> Aft.....
4	Draft when attacked.....	Fwd <i>22'6" (M)</i> Aft.....
5	Cargo on board (any deck).....	Nature <i>GENERAL</i> Tons <i>5700</i>
6	Voyage.....	From <i>CHARLESTON, S.C.</i> To <i>FREETOWN, S. A.</i>
7	Were routing orders followed.....	<i>YES</i>
8	Any criticism of orders.....	<i>NO.</i>
9	Weather at time of attack.....	Weather <i>CLOUDY</i> Sea <i>ROUGH.</i>
10	Was enemy sighted? When.....	<i>YES; AFTER ATTACK.</i>
11	Any friendly ships in sight.....	<i>NO.</i>
12	Were navigation lights on.....	<i>NO.</i>
13	Date and time of attack.....	Date <i>1/27/43</i> Time <i>0451</i>
14	Position.....	Latitude <i>23° 00' N</i> Longitude <i>46° 40' W</i>
15	Nature of attack (Give data).....	<i>TORPEDO</i>
16	Number of hits.....	<i>3</i>
17	Location of hits (Mark diagram).....	<i>1-MACH, 2-AFT. 2-7 5-P</i>
18	Effect of hits.....	<i>SANK SHIP.</i>
19	Was ship armed? What type.....	<i>YES; 1</i>
20	Was armament used? State result.....	<i>NO</i>
21	Any explosions or fires*.....	Ship <i>YES; FIRE.</i> Cargo <i>YES; FIRE</i>
22	Was deck ruptured.....	<i>YES</i>
23	Did ship break in two.....	<i>NO</i>
24	Was SOS sent.....	<i>YES</i>
25	Ship's speed.....	Normal <i>14.5</i> When attacked <i>14.5</i> When abandoned <i>2.5</i>
26	Time abandoned, sunk.....	Abandoned <i>0500 (9 min.)</i> Sunk <i>0532 (41 min.)</i>
27	Was ship reboarded.....	By whom <i>NO</i> When.....
28	Was ship brought in.....	How <i>NO</i> Approximate damage <i>SUNK.</i>



*Fill in this diagram to show attack hits, fires, etc.

Indicate by star (*) rafts, floats, or suits used as temporary refuge in water before rescue by lifeboats.

LINE No.	QUESTIONS	ANSWERS
29	Lifeboats.....	Number carried <u>2</u> Which used <u>2</u>
30	Lifeboats.....	Number lost <u>0</u> How <u>0</u>
31	Life rafts.....	Number carried <u>4</u> Which used <u>2*</u>
32	Life rafts.....	Number lost <u>2</u> How <u>1-TORPEDO EXPLOSION.</u>
33	Life floats.....	Number carried <u>4</u> Which used <u>0</u>
34	Life floats.....	Number lost <u>4</u> How <u>2-TORPEDO EXPLOSION.</u>
35	Lifesaving suits.....	Number carried <u>0</u> Number used <u>0</u>
36	Were boats, etc., attacked.....	Attacked <u>NO</u> Casualties <u>0</u>
37	Time in each boat, raft, etc.....	1 Boat <u>9-DAYS SHRS.</u> Raft <u>—</u> Float <u>—</u>
38	Rescued by and where.....	By <u>MADE PORT</u> Where <u>SAINT BARTHELMEY, F.W.I. BRIDGETOWN, BARBADOS</u>
39	Number of gun crew carried (military).....	Officers <u>1</u> Enlisted men <u>25</u>
40	Number ship's crew carried.....	Officers <u>9</u> Radiomen <u>1</u> Unlicensed <u>35</u>
41	Number passengers and others carried.....	Passengers <u>6</u> Others <u>0</u>
42	Total on board.....	<u>77</u>
43	Number gun crew injured (military).....	Officers <u>0</u> Enlisted men <u>0</u>
44	Number ship's crew injured.....	Officers <u>0</u> Radiomen <u>0</u> Unlicensed <u>0</u>
45	Number passengers and others injured.....	Passengers <u>0</u> Others <u>0</u>
46	Number gun crew lost (military).....	Officers <u>0</u> Enlisted men <u>0</u>
47	Number ship's crew lost.....	Officers <u>0</u> Radiomen <u>0</u> Unlicensed <u>0</u>
48	Number passengers and others lost.....	Passengers <u>0</u> Others <u>0</u>
49	Total casualties.....	Injured <u>0</u> Lost <u>0</u>
50	Persons lost by (Specify).....	Drowning <u>0</u> Fire <u>0</u> Shell or torpedo <u>0</u>
		Other causes <u>0</u>
51	Total rescued.....	Gun crew <u>26</u> Officers <u>9</u> Radio operators <u>1</u>
		Unlicensed <u>35</u> Passengers <u>6</u> Others <u>0</u> Total <u>77</u>
52	Persons saved by.....	Boats <u>77</u> Rafts <u>0</u> Floats <u>0</u> Suits <u>0</u>
		Preservers <u>0</u> Other means <u>0</u> No aid <u>0</u>
53	Engineering watch below.....	Number on watch below <u>3</u> Number lost below <u>0</u>
54	Number of look-outs.....	<u>9</u>
55	Any defective material.....	<u>NO</u>
56	Any personnel fault.....	<u>NO</u>

COMMENTS, CRITICISMS, AND RECOMMENDATIONS

The comments, criticisms, or recommendations of survivors with respect to safety of seamen and ships involved in war actions are earnestly solicited by Headquarters in order that the fullest provision possible may be made for the safety of American ships and seamen.

* Fill in this diagram to show attack hits, fires, etc.

