

To: Commandant, U. S. Coast Guard, Washington, D. C.

Ship *M/s CAPE ROMANO*

Service *OCEAN FREIGHT*

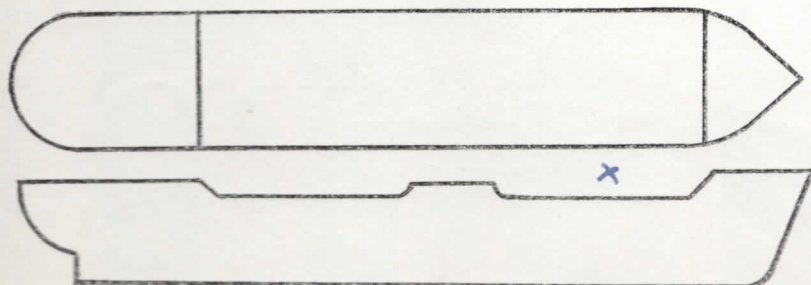
Owner *W.S.A.*

Operator *LYKES BROS. S.S. CO.*

Information furnished by *MASTER*

Date *29 DECEMBER, 1944*

LINE No.	QUESTIONS	ANSWERS
1	Year built and propulsion	Built <i>1942</i> Propulsion <i>DIESEL</i>
2	Tonnage	Gross <i>5106</i> Net <i>2850</i>
3	Draft loaded (maximum allowed)	Fwd <i>24'00" (M)</i> Aft <i>24'00"</i>
4	Draft when attacked	Fwd <i>21'03" (M)</i> Aft <i>22'10"</i>
5	Cargo on board (any deck)	Nature <i>NONE</i> Tons <i>0</i>
6	Voyage	From <i>SAN FRANCISCO, CALIF.</i> To <i>LEYTE, P.I.</i>
7	Were routing orders followed	<i>YES</i>
	Any criticism of orders	<i>NO.</i>
9	Weather at time of attack	Weather <i>CLEAR</i> Sea <i>CALM</i>
10	Was enemy sighted? When	<i>YES; DURING ATTACK.</i>
11	Any friendly ships in sight	<i>YES</i>
12	Were navigation lights on	<i>NO</i>
13	Date and time of attack	Date <i>11-18-44</i> Time <i>0715</i>
14	Position	Latitude <i>AT ANCHOR OFF LEYTE, P.I.</i> Longitude <i>P.I.</i>
15	Nature of attack (Give data)	<i>BOMBED</i>
16	Number of hits	<i>1 (NEAR MISS)</i>
17	Location of hits (Mark diagram)	<i>1- FDR'D. OFF #2-S</i>
18	Effect of hits	<i>SLIGHT DAMAGE.</i>
	Was ship armed? What type	<i>YES; 1-4"; 1-3"; 4-20 MM.</i>
20	Was armament used? State result	<i>UNKNOWN.</i>
21	Any explosions or fires*	Ship <i>NO</i> Cargo <i>NO</i>
22	Was deck ruptured	<i>NO</i>
23	Did ship break in two	<i>NO</i>
24	Was SOS sent	<i>NO</i>
25	Ship's speed	Normal <i>14.0</i> When attacked <i>0</i> When abandoned <i>STOP</i>
26	Time abandoned, sunk	Abandoned <i>N.A.</i> Sunk <i>N.S.</i>
27	Was ship reboarded	By whom <i>N.A.</i> When <i>—</i>
28	Was ship brought in	<i>YES</i> How <i>OWN POWER</i> Approximate damage <i>SLIGHT.</i>



*Fill in this diagram to show attack hits, fires, etc.

16-34271-1

NOTE: VESSEL ALSO SUSTAINED DAMAGE ON 10-25-44 AND 11-19-44, CP CASE JACKETS.

Indicate by star (*) rafts, floats, or suits used as temporary refuge in water before rescue by lifeboats.

LINE No.	QUESTIONS	ANSWERS
29	Lifeboats.....	Number carried <u>2</u> Which used <u>0</u>
30	Lifeboats.....	Number lost <u>0</u> How <u>0</u>
31	Life rafts.....	Number carried <u>4</u> Which used <u>0</u>
32	Life rafts.....	Number lost <u>0</u> How <u>0</u>
33	Life floats.....	Number carried <u>2</u> Which used <u>0</u>
34	Life floats.....	Number lost <u>0</u> How <u>0</u>
35	Lifesaving suits.....	Number carried <u>47</u> Number used <u>0</u>
36	Were boats, etc., attacked.....	Attacked <u>NO</u> Casualties <u>—</u>
37	Time in each boat, raft, etc.....	Boat <u>—</u> Raft <u>—</u> Float <u>—</u> Boat <u>—</u> Raft <u>—</u> Float <u>—</u>
38	Rescued by and where.....	By <u>NOT ABANDONED</u> Where <u>—</u>
39	Number of gun crew carried (military).....	Officers <u>1</u> Enlisted men <u>25</u>
40	Number ship's crew carried.....	Officers <u>11</u> Radiomen <u>1</u> Unlicensed <u>35</u>
41	Number passengers and others carried.....	Passengers <u>2</u> Others <u>0</u>
42	Total on board.....	<u>75</u>
43	Number gun crew injured (military).....	Officers <u>0</u> Enlisted men <u>0</u>
44	Number ship's crew injured.....	Officers <u>0</u> Radiomen <u>0</u> Unlicensed <u>0</u>
45	Number passengers and others injured.....	Passengers <u>0</u> Others <u>0</u>
46	Number gun crew lost (military).....	Officers <u>0</u> Enlisted men <u>0</u>
47	Number ship's crew lost.....	Officers <u>0</u> Radiomen <u>0</u> Unlicensed <u>0</u>
48	Number passengers and others lost.....	Passengers <u>0</u> Others <u>0</u>
49	Total casualties.....	Injured <u>0</u> Lost <u>0</u>
50	Persons lost by (Specify).....	Drowning <u>0</u> Fire <u>0</u> Shell or torpedo <u>0</u> Other causes <u>0</u>
51	Total rescued.....	Gun crew <u>26</u> Officers <u>11</u> Radio operators <u>1</u> Unlicensed <u>35</u> Passengers <u>2</u> Others <u>0</u> Total <u>25</u>
52	Persons saved by.....	Boats <u>0</u> Rafts <u>0</u> Floats <u>0</u> Suits <u>0</u> Preservers <u>0</u> Other means <u>0</u> No aid <u>0</u>
53	Engineering watch below.....	Number on watch below <u>4</u> Number lost below <u>0</u>
54	Number of look-outs.....	<u>APP 6</u>
55	Any defective material.....	<u>NO</u>
56	Any personnel fault.....	<u>NO</u>

COMMENTS, CRITICISMS, AND RECOMMENDATIONS

The comments, criticisms, or recommendations of survivors with respect to safety of seamen and ships involved in war actions are earnestly solicited by Headquarters in order that the fullest provision possible may be made for the safety of American ships and seamen.

