

UNITED STATES COAST GUARD

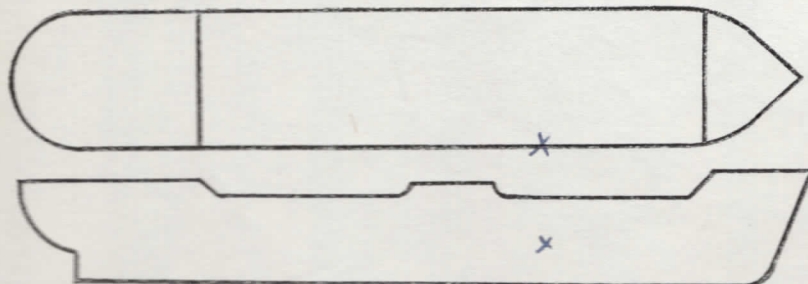
REPORT ON U. S. MERCHANT VESSEL WAR ACTION CASUALTY

(P)

To: Commandant, U. S. Coast Guard, Washington, D. C.

Ship *S/s CHATHAM* Service *OCEAN PASSENGER - FREIGHT*Owner *MERCHANTS & MINERS TRANS. Co.* Operator *U.S. A. T.*Information furnished by *MASTER* Date *24 August 1944*

LINE No.	QUESTIONS	ANSWERS
1	Year built and propulsion	Built <i>1926</i> Propulsion <i>STEAM</i>
2	Tonnage	Gross <i>5649</i> Net <i>3645</i>
3	Draft loaded (maximum allowed)	Fwd <i>17'04" (M)</i> Aft
4	Draft when attacked	Fwd <i>17'04" (M)</i> Aft
5	Cargo on board (any deck)	Nature <i>ALL GENERAL</i> Tons <i>150</i>
6	Voyage	From <i>SYDNEY, NOVA SCOTIA</i> To <i>GREENLAND</i>
7	Were routing orders followed	<i>YES</i>
8	Any criticism of orders	<i>NO</i>
9	Weather at time of attack	Weather <i>CLEAR</i> Sea <i>MODERATE</i>
10	Was enemy sighted? When	<i>NO</i>
11	Any friendly ships in sight	<i>YES</i>
12	Were navigation lights on	<i>NO - DAYLIGHT.</i>
13	Date and time of attack	Date <i>8/27/42</i> Time <i>0846</i>
14	Position	Latitude <i>51°51' N</i> Longitude <i>55°49' W</i>
15	Nature of attack (Give data)	<i>TORPEDO</i>
16	Number of hits	<i>1</i>
17	Location of hits (Mark diagram)	<i>1-MACH. 5</i>
18	Effect of hits	<i>SANK SHIP.</i>
19	Was ship armed? What type	<i>YES</i>
20	Was armament used? State result	<i>NO</i>
21	Any explosions or fires*	Ship <i>YES; BOILERS EXPLODED.</i> Cargo <i>NO</i>
22	Was deck ruptured	<i>YES</i>
23	Did ship break in two	<i>NO</i>
24	Was SOS sent	<i>NO</i>
25	Ship's speed	Normal <i>13.0</i> When attacked <i>9.0</i> When abandoned <i>STOP</i>
26	Time abandoned, sunk	Abandoned <i>0900 (14 min.)</i> Sunk <i>0910 (24 min.)</i>
27	Was ship reboarded	By whom <i>NO</i> When <i>—</i>
28	Was ship brought in	How <i>NO</i> Approximate damage <i>SUNK.</i>



*Fill in this diagram to show attack hits, fires, etc.

Indicate by star (*) rafts, floats, or suits used as temporary refuge in water before rescue by lifeboats.

LINE No.	QUESTIONS	ANSWERS
29	Lifeboats	Number carried <u>14</u> Which used <u>12</u>
30	Lifeboats	Number lost <u>2</u> How <u>TORPEDO EXPLOSION.</u>
31	Life rafts	Number carried <u>9</u> Which used <u>5 4* 9</u>
32	Life rafts	Number lost <u>0</u> How <u>0</u>
33	Life floats	Number carried <u>16</u> Which used <u>16*</u>
34	Life floats	Number lost <u>0</u> How <u>0</u>
35	Lifesaving suits	Number carried <u>1</u> Number used <u>1</u>
36	Were boats, etc., attacked	Attacked <u>NO</u> Casualties <u>0</u>
37	Time in each boat, raft, etc.	Boat <u>4 1/2 HRS.</u> Rafts <u>4 1/2 HRS</u> Float <u>—</u>
38	Rescued by and where <u>4B 8B+9R</u>	By <u>MADE PORT ALLIED SHIPS</u> Where <u>HENLEY HARBOR AT SCENE</u>
39	Number of gun crew carried (military)	Officers <u>1</u> Enlisted men <u>27</u>
40	Number ship's crew carried	Officers <u>10</u> Radiomen <u>3</u> Unlicensed <u>93</u>
41	Number passengers and others carried	Passengers <u>428</u> Others <u>0</u>
42	Total on board	<u>562</u>
43	Number gun crew injured (military)	Officers <u>0</u> Enlisted men <u>1</u>
44	Number ship's crew injured	Officers <u>1</u> Radiomen <u>0</u> Unlicensed <u>0</u>
45	Number passengers and others injured	Passengers <u>0</u> Others <u>0</u>
46	Number gun crew lost (military)	Officers <u>0</u> Enlisted men <u>0</u>
47	Number ship's crew lost	Officers <u>0</u> Radiomen <u>0</u> Unlicensed <u>7</u>
48	Number passengers and others lost	Passengers <u>7</u> Others <u>0</u>
49	Total casualties	Injured <u>2</u> Lost <u>14</u>
50	Persons lost by (Specify)	Drowning <u>0</u> Fire <u>0</u> Shell or torpedo <u>14</u>
		Other causes <u>0</u>
51	Total rescued	Gun crew <u>28</u> Officers <u>810</u> Radio operators <u>3</u>
		Unlicensed <u>86</u> Passengers <u>421</u> Others <u>0</u> Total <u>548</u>
52	Persons saved by	Boats <u>466</u> Rafts <u>82</u> Floats <u>0</u> Suits <u>0</u>
		Preservers <u>0</u> Other means <u>0</u> No aid <u>0</u>
53	Engineering watch below	Number on watch below <u>9</u> Number lost below <u>1</u>
54	Number of look-outs	<u>10</u>
55	Any defective material	<u>NO</u>
56	Any personnel fault	<u>NO</u>

COMMENTS, CRITICISMS, AND RECOMMENDATIONS

The comments, criticisms, or recommendations of survivors with respect to safety of seamen and ships involved in war actions are earnestly solicited by Headquarters in order that the fullest provision possible may be made for the safety of American ships and seamen.