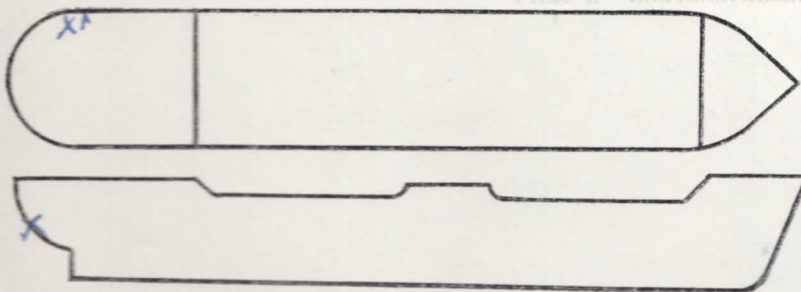


UNITED STATES COAST GUARD  
 REPORT ON U. S. MERCHANT VESSEL WAR ACTION CASUALTY

To: Commandant, U. S. Coast Guard, Washington, D. C.  
 Ship S/S DEER LODGE Service OCEAN FREIGHT  
 Owner W.S.A. Operator MOORE McCORMACK LINES  
 Information furnished by MASTER. Date 11 SEPTEMBER 1944

LINE No.	QUESTIONS	ANSWERS
1	Year built and propulsion	Built <u>1919</u> Propulsion <u>STEAM.</u>
2	Tonnage	Gross <u>6178</u> Net <u>2832.</u>
3	Draft loaded (maximum allowed)	Fwd <u>24' 22'6" (M)</u> Aft <u>21' 6"</u>
4	Draft when attacked	Fwd <u>U. Light</u> Aft _____
5	Cargo on board (any deck)	Nature <u>NONE</u> Tons <u>0.</u>
6	Voyage	From <u>ANCHORED A KOLA INLET</u> To <u>NORTH RUSSIA</u>
7	Were routing orders followed	<u>ANCHORED</u>
8	Any criticism of orders	<u>—</u>
9	Weather at time of attack	Weather <u>LEAR</u> Sea <u>CALM.</u>
10	Was enemy sighted? When	<u>YES; BEFORE ATTACK.</u>
11	Any friendly ships in sight	<u>YES.</u>
12	Were navigation lights on	<u>NO; DAYLIGHT.</u>
13	Date and time of attack	Date <u>5/18/42</u> Time <u>1123</u>
14	Position	Latitude <u>ANCHORED AT KOLA INLET</u> Longitude <u>NORTH RUSSIA</u>
15	Nature of attack (Give data)	<u>BOMBED.</u>
16	Number of hits	<u>FRAGMENTS FROM 1 NEAR MISS.</u>
17	Location of hits (Mark diagram)	<u>1-STERN. -P</u>
18	Effect of hits	<u>SEVERE DAMAGE.</u>
19	Was ship armed? What type	<u>YES</u>
20	Was armament used? State result	<u>YES; NONE.</u>
21	Any explosions or fires*	Ship <u>NO</u> Cargo <u>NO.</u>
22	Was deck ruptured	<u>NO</u>
23	Did ship break in two	<u>NO</u>
24	Was SOS sent	<u>NO.</u>
25	Ship's speed	Normal <u>10.0</u> When attacked <u>STOP</u> When abandoned <u>STOP N.A.</u>
26	Time abandoned, sunk	Abandoned <u>N.A.</u> Sunk <u>N.S.</u>
27	Was ship reboarded	By whom <u>N.A.</u> When _____
28	Was ship brought in	<u>YES</u> How <u>OWN POWER + TOWING.</u> Approximate damage <u>SEVERE</u>



\*Fill in this diagram to show attack hits, fires, etc.

Indicate by star (\*) rafts, floats, or suits used as temporary refuge in water before rescue by lifeboats.

LINE No.	QUESTIONS	ANSWERS			
29	Lifeboats.....	Number carried	4	Which used	0 <u>NOT ABANDONED</u>
30	Lifeboats.....	Number lost	0	How	0
31	Life rafts.....	Number carried	4	Which used	0
32	Life rafts.....	Number lost	0	How	0
33	Life floats.....	Number carried	2	Which used	0
34	Life floats.....	Number lost	0	How	0
35	Lifesaving suits.....	Number carried	0	Number used	0
36	Were boats, etc., attacked.....	Attacked	NO	Casualties	0
37	Time in each boat, raft, etc.....	Boat	—	Raft	—
		Boat	—	Raft	—
38	Rescued by and where.....	By	N.A.	Where	—
		By	—	Where	—
39	Number of gun crew carried (military).....	Officers	1	Enlisted men	10
40	Number ship's crew carried.....	Officers	7	Radiomen	1
41	Number passengers and others carried.....	Passengers	0	Others	0
		Passengers	0	Others	0
42	Total on board.....		45		
43	Number gun crew injured (military).....	Officers	0	Enlisted men	0
44	Number ship's crew injured.....	Officers	0	Radiomen	0
45	Number passengers and others injured.....	Passengers	0	Others	0
		Passengers	0	Others	0
46	Number gun crew lost (military).....	Officers	0	Enlisted men	0
47	Number ship's crew lost.....	Officers	0	Radiomen	0
48	Number passengers and others lost.....	Passengers	0	Others	0
49	Total casualties.....	Injured	0	Lost	0
50	Persons lost by (Specify).....	Drowning	0	Fire	0
		Drowning	0	Fire	0
51	Total rescued.....	Gun crew	11	Officers	7
		Gun crew	11	Officers	7
52	Persons saved by.....	Boats	0	Rafts	0
		Boats	0	Rafts	0
53	Engineering watch below.....	Number on watch below	0	Number lost below	0
		Number on watch below	0	Number lost below	0
54	Number of look-outs.....		12		
55	Any defective material.....		NO		
56	Any personnel fault.....		NO		

COMMENTS, CRITICISMS, AND RECOMMENDATIONS

The comments, criticisms, or recommendations of survivors with respect to safety of seamen and ships involved in war actions are earnestly solicited by Headquarters in order that the fullest provision possible may be made for the safety of American ships and seamen.

