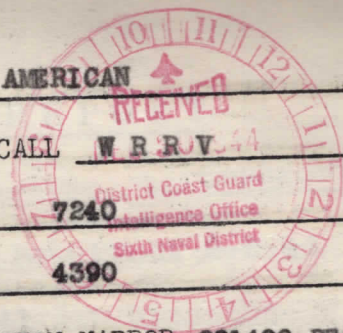


QUESTIONNAIRE

NAME OF VESSEL ETHEL BERT NEVIN NATIONALITY AMERICAN  
 TYPE OF VESSEL LIBERTY INTERNATIONAL CALL WRRV-44  
 MAXIMUM SPEED 11.5 GROSS TONNAGE 7240  
 CERTIFIED CRUISING SPEED 10.5 NET TONNAGE 4390  
 (Moderate sea - Force 4 wind )  
 CARGO AMMO TIME IN CHARLESTON HARBOR 291400 DEC  
 ORIGINAL PORT OF DEPARTURE ORAN LAST PORT OF CALL ORAN  
 DESTINATION BALTIMORE, MD. HAVE YOU ENTERED CUSTOMS IF ORIGINALLY  
 FROM FOREIGN NO



ARMAMENT  
 GUNS 2-(5" 38 & 3" 50) ROUNDS AMMUNITION 242 Rds: 5"  
 MACHINE GUNS 8-20mm ROUNDS AMMUNITION 151 Rds: 3"  
 NUMBER ROCKETS 4 NO. FLARES 0 SMOKE POTS 12  
 DRAFT FORWARD 20' AFT 22' BUNKER 12,200 bbls. 3000  
 DEGAUSSED when/where JULY 1944, JACKSONVILLE capacity 190 on hand 32  
 DEPERMED when/where AUG. 1944, NORFOLK WATER consumption sea 5 480 in port 100  
 OWNER W.S.A. " capacity 9 on hand 9  
 consumption sea in port  
 OPERATOR MOORE & Mc CORMACK REQUIRES BEFORE SAILING:  
 AGENT CAROLINA SHIPPING Repairs NO  
 PILOT P.A. PETERSON LT COMDR USCGR (T) Fuel No  
 Water No  
 Provisions Yes  
 IN PORT FOR DISCHARGING

JAMES W. HUNLEY  
 (Master)

Note on back any remarks or information concerning submarines, suspicious vessels, suspicious activity on the part of members of crew or passengers, suspicious lights, messages, giving, where possible, full particulars.

Three crew lists are requested - Marine Inspec.  
 U. S. C. G.  
 Intelligence.

B.A. MOORE LT (jg) USCGR (T)  
 (Boarding Officer)