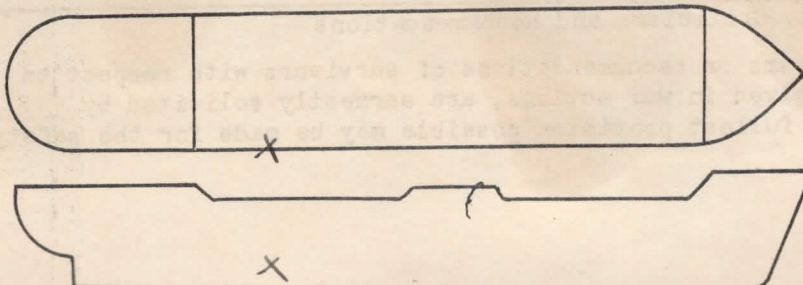


(Feb. 1943)  
NCG 924d-1CONFIDENTIAL  
UNITED STATES COAST GUARD  
REPORT ON U. S. MERCHANT VESSEL WAR ACTION CASUALTY

TO: Commandant, U. S. Coast Guard, Washington, D. C.

Ship S/S. EXCELLO Service OCEAN FREIGHT  
Owner AMERICAN EXPORT LINES Operator AMERICAN EXPORT LINES  
Info. furnished by MASTER. Date 14 JULY, 1944

Line No.	QUESTIONS	ANSWERS	
1.	Year built & propulsion	Built 1919	Propulsion STEAM
2.	Tonnage	Gross 4969	Net 3037
3.	Draft loaded (max. allowed)	Fwd. 24'9" (M)	Aft
4.	Draft when attacked	Fwd. 14'10" (M)	Aft
5.	Cargo on board (any deck)	Nature 0	Tons 0
6.	Voyage	From PORT SAID, EGYPT To CAPE TOWN, S. A.	
7.	Were routing orders followed	YES	
8.	Any criticism of orders	NO	
9.	Weather at time of attack	Weather CLEAR	Sea ROUGH
10.	Was enemy sighted - (when)	YES; AFTER.	
11.	Any friendly ships in sight	NO	
12.	Were navigation lights on	NO (DAYLIGHT)	
13.	Date and time of attack	Date 11/13/42	Time 0715
14.	Position	Lat. 32° 23' S	Long. 30° 07' W.
15.	Nature of attack (Give data)	TORPEDO	
16.	Number of hits	1	
17.	Location of hits (Mark diagram)	AFT - 1-H 5-P	
18.	Effect of hits	SANK SHIP	
19.	Was ship armed (What type)	YES	
20.	Was armament used (State result)	NO	
21.	Any explosions or fires*	Ship NO	Cargo NO
22.	Was deck ruptured	YES	
23.	Did ship break in two	NO	
24.	Was SOS sent	YES	
25.	Ship's speed	Normal 10	When attacked 9 When abandoned STOP.
26.	Time abandoned, sunk	Abandoned 0725 (10 min)	Sunk 0727 (12 min)
27.	Was ship reboarded	By whom NO	When —
28.	Was ship brought in	How NO	Approx. damage SUNK



\*Fill in this diagram  
to show attack hits,  
fires, etc.



Sheet 2 NCG 924d-1

Indicate by star (\*) rafts, floats or suits used as temporary refuge in water before rescue by lifeboats

Line No.	QUESTIONS	ANSWERS
29.	Lifeboats	No. carried 4 Which used 3
30.	Lifeboats	No. lost 1 How FOULED
31.	Life rafts	No. carried 4 Which used 1*
32.	Life rafts	No. lost 3 How NOT NEEDED
33.	Life floats	No. carried 2 Which used 0
34.	Life floats	No. lost 2 How NOT NEEDED
35.	Lifesaving suits	No. carried 5/No. used 0
36.	Were boats, etc. attacked	Attacked NO Casualties 0
37.	Time in each boat, raft etc.	1 Boat - 7-D. - Raft - Float 1 " - 2-D - Raft - Float 1 Boat - 1-D - Raft - Float
38.	Rescued by & where	By 3-MADE PORT SOUTH AFRICA. 1-ALLIED SHIP Where
39.	No. gun crew carried (military)	Officers 1 Enlisted men 12
40.	No. ship's crew carried	Officers 8 Radio men 1 Unlicensed 29
41.	No. passgrs. & others carried	Passgrs. 0 Others 0
42.	Total on board	51
43.	No. gun crew injured (military)	Officers 0 Enlisted men 0
44.	No. ship's crew injured	Officers 0 Radio men 0 Unlicensed 0
45.	No. passgrs. & others injured	Passgrs. 0 Others 0
46.	No. gun crew lost (military)	Officers 0 Enlisted men 1
47.	No. ship's crew lost	Officers 1 Radio men 0 Unlicensed 0
48.	No. passgrs. & others lost	Passgrs. 0 Others 0
49.	Total casualties	Injured 0 Lost 2
50.	Persons lost by (Specify)	Drowning 0 Fire 0 Shell or Torp. 1 Other causes 1- SUFFOCATION.
51.	Total rescued	Gun crew 12 Officers 7 Radio Oprs. 1 Unlicensed 29 Passgrs. 0 Others 0 Total 49
52.	Persons saved by	Boats 49 Rafts <del>0</del> Floats 0 Suits 0 Preservers 0 Other means 0 No aid 0
53.	Engineering watch below	No. on watch below 4 No. lost below 0
54.	No. of lookouts	5
55.	Any defective material	NO
56.	Any personnel fault	NO

## Comments, Criticisms and Recommendations

The comments, criticisms or recommendations of survivors with respect to safety of seamen and ships involved in war actions, are earnestly solicited by Headquarters in order that the fullest provision possible may be made for the safety of American ships and seamen.