

CONFIDENTIAL

UNITED STATES COAST GUARD
REPORT ON U. S. MERCHANT VESSEL WAR ACTION CASUALTY

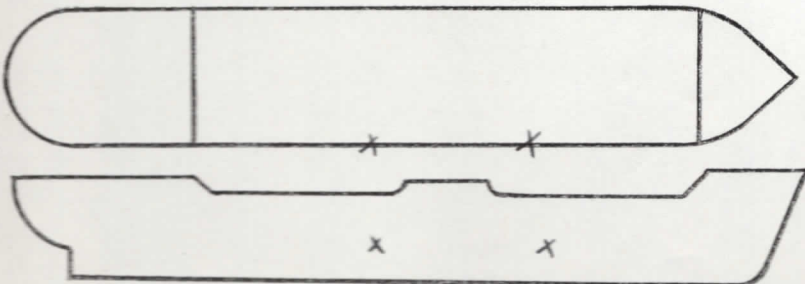
To: Commandant, U. S. Coast Guard, Washington, D. C.

Ship *s/s JOHN RANDOLPH* Service *OCEAN FREIGHT.*

Owner *U.S.M.C.* Operator *UNION SULPHUR Co.*

Information furnished by *MASTER* Date *18 August 1944*

| LINE No. | QUESTIONS | ANSWERS |
|----------|---------------------------------|-------------------------------------------------------------------------|
| 1 | Year built and propulsion | Built <i>1942</i> Propulsion <i>STEAM</i> |
| 2 | Tonnage | Gross <i>7191</i> Net <i>4389</i> |
| 3 | Draft loaded (maximum allowed) | Fwd <i>27'3" (M)</i> Aft _____ |
| 4 | Draft when attacked | Fwd <i>14' (M)</i> Aft _____ |
| 5 | Cargo on board (any deck) | Nature <i>GENERAL BALLAST</i> Tons <i>800</i> |
| 6 | Voyage | From _____ To <i>ICELAND</i> |
| 7 | Were routing orders followed | <i>YES</i> |
| 8 | Any criticism of orders | <i>NO</i> |
| 9 | Weather at time of attack | Weather <i>FOG</i> Sea <i>ROUGH.</i> |
| 10 | Was enemy sighted? When | <i>NO.</i> |
| 11 | Any friendly ships in sight | <i>YES; CONVOY.</i> |
| 12 | Were navigation lights on | <i>NO</i> |
| 13 | Date and time of attack | Date <i>7/5/42</i> Time <i>2118</i> |
| 14 | Position | Latitude <i>66° 39' N</i> Longitude <i>23° 33' W</i> |
| 15 | Nature of attack (Give data) | <i>TORPEDO</i> |
| 16 | Number of hits | <i>2</i> |
| 17 | Location of hits (Mark diagram) | <i>1-FOR'D; 1-AFT. 1# 33, 1# 4</i> |
| 18 | Effect of hits | <i>SANK SHIP.</i> |
| 19 | Was ship armed? What type | <i>YES.</i> |
| 20 | Was armament used? State result | <i>NO.</i> |
| 21 | Any explosions or fires* | Ship <i>NO</i> Cargo <i>NO.</i> |
| 22 | Was deck ruptured | <i>YES</i> |
| 23 | Did ship break in two | <i>YES</i> |
| 24 | Was SOS sent | <i>NO</i> |
| 25 | Ship's speed | Normal <i>10.5</i> When attacked <i>8.0</i> When abandoned <i>STOP.</i> |
| 26 | Time abandoned, sunk | Abandoned <i>2140 (22 min.)</i> Sunk <i>2330 (2 hrs 12 min)</i> |
| 27 | Was ship reboarded | By whom <i>NO</i> When _____ |
| 28 | Was ship brought in | How _____ Approximate damage <i>SUNK.</i> |



*Fill in this diagram to show attack hits, fires, etc.

Indicate by star (*) rafts, floats, or suits used as temporary refuge in water before rescue by lifeboats.

| LINE No. | QUESTIONS | ANSWERS | | | |
|----------|--------------------------------------------|-----------------------|--------------|-------------------|----------------------------|
| 29 | Lifeboats..... | Number carried | 4 | Which used | 2 |
| 30 | Lifeboats..... | Number lost | 2 | How | FAILURE OF RELEASING GEAR. |
| 31 | Life rafts..... | Number carried | 4 | Which used | 2 |
| 32 | Life rafts..... | Number lost | 2 | How | TORP. EXPLOSION. |
| 33 | Life floats..... | Number carried | 0 | Which used | 0 |
| 34 | Life floats..... | Number lost | 0 | How | 0 |
| 35 | Lifesaving suits..... | Number carried | 0 | Number used | 0 |
| 36 | Were boats, etc., attacked..... | Attacked | NO | Casualties | 0 |
| 37 | Time in each boat, raft, etc..... | Boats | 3 1/2 HRS. | Raft | 3 1/2 HRS. |
| | | Boat | - | Raft | - |
| 38 | Rescued by and where..... | By | ALLIED SHIPS | Where | AT SCENE. |
| 39 | Number of gun crew carried (military)..... | Officers | 2 | Enlisted men | 10 |
| 40 | Number ship's crew carried..... | Officers | 8 | Radiomen | 1 |
| | | | | Unlicensed | 29 |
| 41 | Number passengers and others carried..... | Passengers | 17 | Others | 0 |
| 42 | Total on board..... | | 62 | | |
| 43 | Number gun crew injured (military)..... | Officers | 0 | Enlisted men | 1 |
| 44 | Number ship's crew injured..... | Officers | 0 | Radiomen | 0 |
| | | | | Unlicensed | 0 |
| 45 | Number passengers and others injured..... | Passengers | 0 | Others | 0 |
| 46 | Number gun crew lost (military)..... | Officers | 0 | Enlisted men | 0 |
| 47 | Number ship's crew lost..... | Officers | 2 | Radiomen | 0 |
| | | | | Unlicensed | 3 |
| 48 | Number passengers and others lost..... | Passengers | 0 | Others | 0 |
| 49 | Total casualties..... | Injured | 1 | Lost | 5 |
| 50 | Persons lost by (Specify)..... | Drowning | 3 | Fire | 0 |
| | | | | Shell or torpedo | 2 |
| | | Other causes | 0 | | |
| 51 | Total rescued..... | Gun crew | 12 | Officers | 6 |
| | | | | Radio operators | 1 |
| | | Unlicensed | 26 | Passengers | 12 |
| | | | | Others | 0 |
| | | | | Total | 57 |
| 52 | Persons saved by..... | Boats | 47 | Rafts | 10 |
| | | | | Floats | 0 |
| | | | | Suits | 0 |
| | | Preservers | 0 | Other means | 0 |
| | | | | No aid | 0 |
| 53 | Engineering watch below..... | Number on watch below | 3 | Number lost below | 0 |
| 54 | Number of look-outs..... | | 2 | | |
| 55 | Any defective material..... | | NO | | |
| 56 | Any personnel fault..... | | NO. | | |

COMMENTS, CRITICISMS, AND RECOMMENDATIONS

The comments, criticisms, or recommendations of survivors with respect to safety of seamen and ships involved in war actions are earnestly solicited by Headquarters in order that the fullest provision possible may be made for the safety of American ships and seamen.

*Fill in this diagram to show attack hits, fires, etc.

