

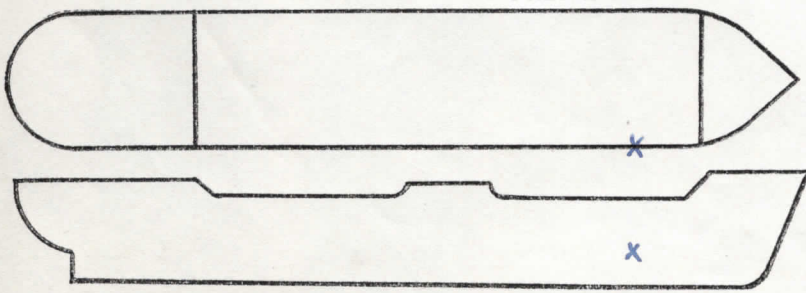
To: Commandant, U. S. Coast Guard, Washington, D. C.

Ship *S/s RICHARD BLAND* Service *OCEAN FREIGHT.*

Owner *U.S.M.C.* Operator *AMERICAN-SOUTH AFRICAN LINE*

Information furnished by *3RD MATE* Date *21 SEPTEMBER 1944*

LINE No.	QUESTIONS	ANSWERS
1	Year built and propulsion	Built <i>1942</i> Propulsion <i>STEAM</i>
2	Tonnage	Gross <i>7191</i> Net <i>4389</i>
3	Draft loaded (maximum allowed)	Fwd <i>27' 9 1/2" (M)</i> Aft <i>27' 9 1/2"</i>
4	Draft when attacked	Fwd <i>22' 6" (M)</i> Aft <i>21'</i>
5	Cargo on board (any deck)	Nature <i>GENERAL</i> Tons _____
6	Voyage	From <i>KOLA INLET, MURMANSK</i> To <i>LOCH EWE, SCOTLAND</i>
7	Were routing orders followed	<i>YES</i>
8	Any criticism of orders	<i>NO.</i>
9	Weather at time of attack	Weather <i>CLEAR</i> Sea <i>CALM.</i>
10	Was enemy sighted? When	<i>NO</i>
11	Any friendly ships in sight	<i>YES; CONVOY.</i>
12	Were navigation lights on	<i>NO;</i>
13	Date and time of attack	Date <i>3/5/43</i> Time <i>0728</i>
14	Position	Latitude <i>72° 45' N</i> Longitude <i>11° 40' E</i>
15	Nature of attack (Give data)	<i>TORPEDGED</i>
16	Number of hits	<i>1</i>
17	Location of hits (Mark diagram)	<i>I-FOR'D #1-S</i>
18	Effect of hits	<i>EXTENSIVE DAMAGE</i>
19	Was ship armed? What type	<i>YES</i>
20	Was armament used? State result	<i>NO</i>
21	Any explosions or fires*	Ship <i>NO</i> Cargo <i>NO</i>
22	Was deck ruptured	<i>NO</i>
23	Did ship break in two	<i>NO</i>
24	Was SOS sent	<i>YES</i>
25	Ship's speed	Normal <i>10.5</i> When attacked <i><del>7.7</del> 7.7</i> When abandoned _____
26	Time abandoned, sunk	Abandoned <i>N.A.</i> Sunk <i>N.S.</i>
27	Was ship reboarded	By whom <i>N.A.</i> When <i>N.S.</i>
28	Was ship brought in	<i>NO</i> How <i>SUNK ON 3/10/43</i> <i>NOTED</i> Approximate damage <i>EXTENSIVE</i>



\*Fill in this diagram to show attack hits, fires, etc.

NOTE - ON 3/10/43 SHIP COLLECTED TWO MORE TORPEDO HITS WHILE ON THIS SAME VOYAGE. FOR DETAILS SEE FORM 9343-1 OF THAT DATE.

Indicate by star (\*) rafts, floats, or suits used as temporary refuge in water before rescue by lifeboats.

LINE No.	QUESTIONS	ANSWERS							
29	Lifeboats.....	Number carried	4	Which used	0	<u>NOT ABANDONED</u>			
30	Lifeboats.....	Number lost	0	How	0				
31	Life rafts.....	Number carried	4	Which used	0				
32	Life rafts.....	Number lost	0	How	0				
33	Life floats.....	Number carried	2	Which used	0				
34	Life floats.....	Number lost	0	How	0				
35	Lifesaving suits.....	Number carried	0	Number used	0				
36	Were boats, etc., attacked.....	Attacked	NO	Casualties	0				
37	Time in each boat, raft, etc.....	Boat	—	Raft	—	Float	—		
		Boat	—	Raft	—	Float	—		
38	Rescued by and where.....	By	N.R.	Where	—				
39	Number of gun crew carried (military).....	Officers	1	Enlisted men	25				
40	Number ship's crew carried.....	Officers	9	Radiomen	1	Uncensored	32		
41	Number passengers and others carried.....	Passengers	1	Others					
42	Total on board.....		69						
43	Number gun crew injured (military).....	Officers	0	Enlisted men	0				
44	Number ship's crew injured.....	Officers	0	Radiomen	0	Uncensored	0		
45	Number passengers and others injured.....	Passengers	0	Others	0				
46	Number gun crew lost (military).....	Officers	0	Enlisted men	0				
47	Number ship's crew lost.....	Officers	0	Radiomen	0	Uncensored	0		
48	Number passengers and others lost.....	Passengers	0	Others	0				
49	Total casualties.....	Injured	0	Lost	0				
50	Persons lost by (Specify).....	Drowning	0	Fire	0	Shell or torpedo	0		
		Other causes	0						
51	Total rescued.....	Gun crew	26	Officers	9	Radio operators	1		
		Uncensored	32	Passengers	1	Others	0	Total	69
52	Persons saved by.....	Boats	0	Rafts	0	Floats	0	Suits	0
		Preservers	0	Other means	0	No aid	0		
53	Engineering watch below.....	Number on watch below	3	Number lost below	0				
54	Number of look-outs.....		6						
55	Any defective material.....		NO						
56	Any personnel fault.....		NO						

COMMENTS, CRITICISMS, AND RECOMMENDATIONS

The comments, criticisms, or recommendations of survivors with respect to safety of seamen and ships involved in war actions are earnestly solicited by Headquarters in order that the fullest provision possible may be made for the safety of American ships and seamen.

