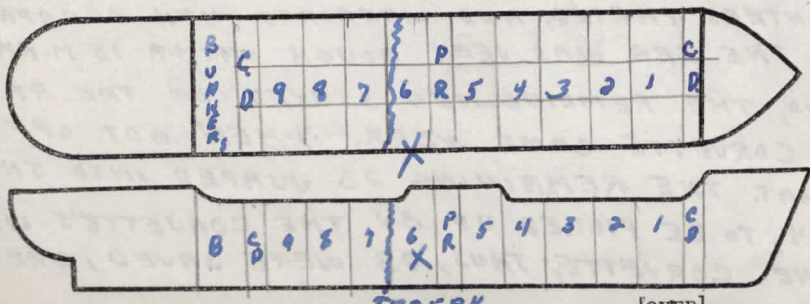


Ship SS ROBERT H. COLLEY Service OCEAN TANKER  
 Owner ATLANTIC REFINING Co. Operator W.S.A.  
 Information furnished by CREWMEN. Date 11 DECEMBER, 1944

Line No.	QUESTIONS	ANSWERS	
1	Year built and propulsion	Built <u>1938</u>	Propulsion <u>STEAM.</u>
2	Tonnage	Gross <u>11,651</u>	Net <u>7258</u>
3	Draft loaded (maximum allowed)	Fwd. <u>30'11" (M)</u>	Aft
4	Draft when attacked	Fwd. <u>29'00" (M)</u>	Aft
5	D. W. T. (Emergency Coastwise L. L.)	<u>18644</u>	
6	Cargo 42's capacity and carried	Capacity <u>154,761 BBLs.</u>	Carried <u>120,273 BBLs.</u>
7	Kind of cargo or tank ballast	<u>NAVY FUEL OIL.</u>	
8	Was ship gas-free? (Specify)	<u>NO; LOADED</u>	
9	Voyage	From <u>NEW YORK</u>	To <u>UNITED KINGDOM</u>
10	Were routing orders followed	<u>YES</u>	
11	Any criticism of orders	<u>NO</u>	
12	Weather at time of attack	Weather <u>OVERCAST</u>	Sea <u>ROUGH</u>
13	Was enemy sighted? When	<u>NO</u>	
14	Any friendly ships in sight	<u>YES; CONVOY</u>	
15	Were navigation lights on	<u>NO; <del>ON</del></u>	
16	Date and time of attack	Date <u>10-4-42</u>	Time <u>1640</u>
17	Position	Latitude <u>59°06'N</u>	Longitude <u>26°18'W</u>
18	Nature of attack (Give data)	<u>TORPEDOED</u>	
19	Number of hits	<u>1</u>	
20	Location of hits (Mark diagram)	<u>1-AFT (2/3 PAR. BOD.)</u>	
21	Effect of hits	<u>SANK SHIP</u>	<u>NOTED</u>
22	Was ship armed? What type	<u>YES;</u>	
23	Was armament used? State result	<u>NO</u>	
24	Was oil sprayed over ship	<u>YES</u>	
25	Did cargo fire (Mark diagram)	<u>NO</u>	
26	Did tanks explode (Mark diagram)	<u>NO</u>	
27	Was deck ruptured	<u>YES</u>	
28	Did ship break in two	<u>YES</u>	
29	Was SOS sent	<u>NO</u>	
30	Ship's speed	Normal <u>13.3</u>	When attacked <u>10.0</u> When abandoned <u>STOP.</u>
31	Time abandoned, sunk	Abandoned <u>0600 (13 hrs, 20 min.)</u>	Sunk <u>1600 - 10/5/42 (23 hrs, 20 min.)</u>
32	Was ship reboarded	By whom <u>NO</u>	When <u>—</u>
33	Was ship brought in	How <u>NO</u>	Approximate damage <u>SUNK.</u>



Fill in this diagram to show attack hits, fires, explosions, etc.

NOTED -  
FOR'D HALF SANK OF OWN ACCORD; AFT HALF SUNK BY SHELL FIRE OF ESCORT.  
NEXT DAY

35	Lifeboats.....	Number lost.....	How.....	<i>1- PROPER EXPLOSION 2- DRIFTED AWAY WHEN PRINTERS PARTED</i>	
36	Life rafts.....	Number carried.....	Which used.....	<i>6 1 2- DRIFTED AWAY WHEN PRINTERS PARTED</i>	
37	Life rafts.....	Number lost.....	How.....	<i>5 3- PREVIOUS HEAVY WEATHER</i>	
38	Life floats.....	Number carried.....	Which used.....	<i>0 0</i>	
39	Life floats.....	Number lost.....	How.....	<i>0 0</i>	
40	Lifesaving suits.....	Number carried.....	Number used.....	<i>61 40</i>	
41	Were boats, etc., attacked.....	Attacked.....	Casualties.....	<i>NO 0</i>	
42	Time in each boat, raft, etc.....	Boat.....	Raft.....	Float.....	
		<i>2-- LOST AT SEA</i>	<i>1-- 10 min</i>	<i>--</i>	<i>Float</i>
		<i>1-- WB 70 min</i>	<i>--</i>	<i>--</i>	<i>Float</i>
43	Rescued by and where.....	By.....	Where.....	<i>1 WB 70 min ALLIED SHIP AT SCENE</i>	
44	Number of gun crew carried (military).....	Officers.....	Enlisted men.....	<i>1 16</i>	
45	Number of ship's crew carried.....	Officers.....	Radiomen.....	Unlicensed.....	
		<i>10</i>	<i>2</i>	<i>32</i>	
46	Number of others carried.....	<i>0</i>			
47	Total on board.....	<i>61</i>			
48	Number of gun crew injured (military).....	Officers.....	Enlisted men.....	<i>0 1</i>	
49	Number of ship's crew injured.....	Officers.....	Radiomen.....	Unlicensed.....	
		<i>0</i>	<i>0</i>	<i>026</i>	
50	Number of others injured.....	<i>0</i>			
51	Number of gun crew lost (military).....	Officers.....	Enlisted men.....	<i>1 7</i>	
52	Number of ship's crew lost.....	Officers.....	Radiomen.....	Unlicensed.....	
		<i>6</i>	<i>2</i>	<i>12</i>	
53	Number of others lost.....	<i>0</i>			
54	Total casualties.....	Injured.....	Lost.....	<i>14 28</i>	
55	Persons lost by (specify).....	Drowning.....	Fire.....	Shell or Torpedo.....	
		<i>15</i>	<i>0</i>	<i>4</i>	
		<i>9 (UNKNOWN - PRESUMABLY EXPOSURE - NOTED)</i>			
56	Total rescued.....	Gun crew.....	Officers.....	Radiomen.....	
		<i>9</i>	<i>4</i>	<i>0</i>	
		Unlicensed.....	Others.....	Total.....	
		<i>20</i>	<i>0</i>	<i>33</i>	
57	Persons saved by.....	Boats.....	Rafts.....	Floats.....	
		<i>0</i>	<i>7</i>	<i>0</i>	
		Preservers.....	Other means.....	No aid.....	
		<i>0</i>	<i>3</i>	<i>0</i>	
58	Engineering watch below.....	Number on watch below.....	Number lost below.....	<i>6 4</i>	
59	Number of lookouts.....	<i>5</i>			
60	Any defective material.....	<i>NO</i>			
61	Any personnel fault.....	<i>NO</i>			

**COMMENTS, CRITICISMS, AND RECOMMENDATIONS**

The comments, criticisms, or recommendations of survivors with respect to safety of seamen and ships involved in war actions are earnestly solicited by Headquarters in order that the fullest provision possible may be made for the safety of American ships and seamen.

16-34268-1 U. S. GOVERNMENT PRINTING OFFICE

**NOTE ①** - 8 MEN GOT IN ONE BOAT, AND 1 IN ANOTHER; BEFORE ANY ONE ELSE COULD GET INTO BOATS, PRINTERS PARTED, AND LIFEBOATS WITH OCCUPANTS WERE NEVER AGAIN SEEN. THE SEA WAS VERY ROUGH WITH A 75 M.P.H. GALE.

**NOTE ②** - AFTER SHIP BROKE IN TWO, THE REMAINING MEN STAYED ON THE RAFT END UNTIL DAYBREAK. A CORVETTE CAME NEAR. 7-MEN GOT OFF IN A LIFE RAFT, 3-IN A WORKBOAT. THE REMAINING 23 JUMPED INTO THE SEA IN GROUPS OF 3 AND 4, TO BE PICKED UP BY THE CORVETTE'S LIFE BOAT AND DELIVERED TO THE CORVETTE; THUS, 23 WERE SAVED, GREATLY AIDED BY THEIR LIFESAVING SUITS.