

CONFIDENTIAL

UNITED STATES COAST GUARD REPORT ON U. S. MERCHANT VESSEL WAR ACTION CASUALTY

To: Commandant, U. S. Coast Guard, Washington, D. C.

Ship/s: WALTER CAMP

Service: OCEAN FREIGHT

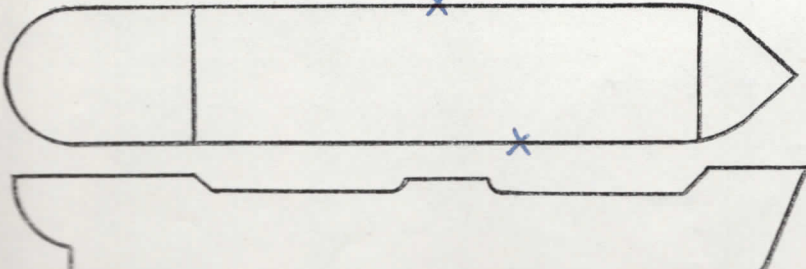
Owner: W.S.A.

Operator: AMERICAN PRESIDENT LINES

Information furnished by: MASTER

Date: 1 NOVEMBER, 1944

Table with columns: LINE No., QUESTIONS, ANSWERS. Contains detailed report data such as Year built (1943), Tonnage (7176), Draft (28' M), Date of attack (1/26/44), and Nature of attack (TORPEDOED).



*Fill in this diagram to show attack hits, fires, etc.

Indicate by star (*) rafts, floats, or suits used as temporary refuge in water before rescue by lifeboats.

LINE No.	QUESTIONS	ANSWERS
29	Lifeboats.....	Number carried <u>4</u> Which used <u>2</u>
30	Lifeboats.....	Number lost <u>2</u> How <u>TORPEDO EXPLOSION</u>
31	Life rafts.....	Number carried <u>4</u> Which used <u>3</u>
32	Life rafts.....	Number lost <u>1</u> How <u>TORPEDO EXPLOSION</u>
33	Life floats.....	Number carried <u>2</u> Which used <u>1*</u>
34	Life floats.....	Number lost <u>1</u> How <u>NOT NEEDED</u>
35	Lifesaving suits.....	Number carried <u>41</u> Number used <u>0</u>
36	Were boats, etc., attacked.....	Attacked <u>NO</u> Casualties <u>0</u>
37	Time in each boat, raft, etc.	<u>2</u> Boats <u>4 1/2 DAYS</u> <u>3</u> Rafts <u>4 1/2 DAYS</u> <u>-</u> Float
		<u>-</u> Boat <u>-</u> Raft <u>-</u> Float
38	Rescued by and where <u>2B+3R</u>	By <u>ALLIED SHIP</u> Where <u>08°51'N, 70°56'E.</u>
39	Number of gun crew carried (military)	Officers <u>1</u> Enlisted men <u>27</u>
40	Number ship's crew carried	Officers <u>8</u> Radiomen <u>1</u> Unlicensed <u>31</u>
41	Number passengers and others carried	Passengers <u>1</u> Others <u>0</u>
42	Total on board.....	<u>69</u>
43	Number gun crew injured (military)	Officers <u>0</u> Enlisted men <u>0</u>
44	Number ship's crew injured	Officers <u>1</u> Radiomen <u>1</u> Unlicensed <u>0</u>
45	Number passengers and others injured	Passengers <u>1</u> Others <u>0</u>
46	Number gun crew lost (military)	Officers <u>0</u> Enlisted men <u>0</u>
47	Number ship's crew lost	Officers <u>0</u> Radiomen <u>0</u> Unlicensed <u>0</u>
48	Number passengers and others lost	Passengers <u>0</u> Others <u>0</u>
49	Total casualties.....	Injured <u>3</u> Lost <u>0</u>
50	Persons lost by (Specify)	Drowning <u>0</u> Fire <u>0</u> Shell or torpedo <u>0</u>
		Other causes <u>0</u>
51	Total rescued.....	Gun crew <u>28</u> Officers <u>8</u> Radio operators <u>1</u>
		Unlicensed <u>31</u> Passengers <u>1</u> Others <u>0</u> Total <u>69</u>
52	Persons saved by.....	Boats <u>35</u> Rafts <u>34</u> Floats <u>0</u> Suits <u>0</u>
		Preservers <u>0</u> Other means <u>0</u> No aid <u>0</u>
53	Engineering watch below.....	Number on watch below <u>3</u> Number lost below <u>0</u>
54	Number of look-outs.....	<u>8</u>
55	Any defective material.....	<u>NO</u>
56	Any personnel fault.....	<u>NO</u>

COMMENTS, CRITICISMS, AND RECOMMENDATIONS

The comments, criticisms, or recommendations of survivors with respect to safety of seamen and ships involved in war actions are earnestly solicited by Headquarters in order that the fullest provision possible may be made for the safety of American ships and seamen.

*Fill in this diagram to show attack hits, fires, etc.

