

CONFIDENTIAL

UNITED STATES COAST GUARD

REPORT ON U. S. MERCHANT VESSEL WAR ACTION CASUALTY

To: Commandant, U. S. Coast Guard, Washington, D. C.

Ship *s/s WILLIAM SHARON*

Service *OCEAN FREIGHT*

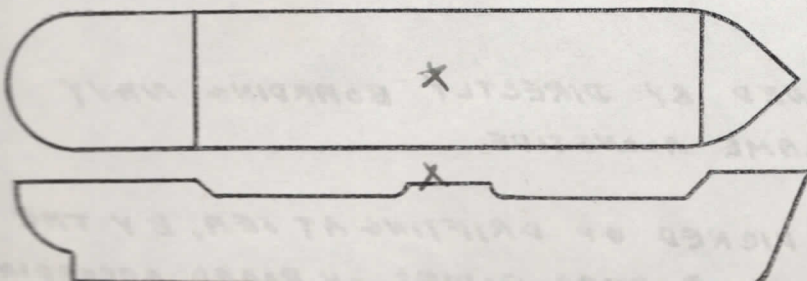
Owner *W.S.A.*

Operator *UNITED FRUIT Co.*

Information furnished by *CHIEF MATE*

Date *26 MARCH, 1945*

LINE No.	QUESTIONS	ANSWERS
1	Year built and propulsion	Built <i>1943</i> Propulsion <i>STEAM</i>
2	Tonnage	Gross <i>7176</i> Net <i>4380</i>
3	Draft loaded (maximum allowed)	Fwd <i>27'09" (M)</i> Aft
4	Draft when attacked	Fwd <i>24' 25'00" (M)</i> Aft <i>26'</i>
5	Cargo on board (any deck)	Nature <i>GENERAL</i> Tons <i>7000</i>
6	Voyage	From <i>LEYTE P.I.</i> To <i>MINDORO, P.I.</i>
7	Were routing orders followed	<i>YES</i>
8	Any criticism of orders	<i>NO</i>
	Weather at time of attack	Weather <i>CLEAR</i> Sea <i>CALM</i>
10	Was enemy sighted? When	<i>YES; BEFORE AND DURING ATTACK</i>
11	Any friendly ships in sight	<i>YES; CONVOY.</i>
12	Were navigation lights on	<i>NO; DAYLIGHT.</i>
13	Date and time of attack	Date <i>12-28-44</i> Time <i>1020</i>
14	Position	Latitude <i>SURIGAO STRAITS, OFF PANIAN ISLAND, P.I.</i> Longitude
15	Nature of attack (Give data)	<i>BOMBED (CRASH-ATTACK BY SUICIDE PLANE.</i>
16	Number of hits	<i>1</i>
17	Location of hits (Mark diagram)	<i>1-MACH. 1-MID-SUPER STRUCTURE</i>
18	Effect of hits	<i>EXTENSIVE STRUCTURAL DAMAGE.</i>
19	Was ship armed? What type	<i>YES</i>
	Was armament used? State result	<i>YES; HITS SCORED ON PLANE.</i>
21	Any explosions or fires*	Ship <i>YES; FIRE</i> Cargo <i>YES; FIRE.</i>
22	Was deck ruptured	<i>NO</i>
23	Did ship break in two	<i>NO</i>
24	Was SOS sent	<i>NO</i>
25	Ship's speed	Normal <i>11.0</i> When attacked <i>6.5</i> When abandoned <i>STOP.</i>
26	Time abandoned, sunk	Abandoned <i>1130 (1 hr. 10 min)</i> Sunk <i>N.S.</i>
27	Was ship reboarded	<i>YES</i> By whom <i>NAVY + SHIP'S CREW</i> When <i>14.30 (4 hrs 10 min)</i>
28	Was ship brought in	<i>YES</i> How <i>TOWED TO LEYTE</i> Approximate damage <i>EXTENSIVE</i>



*Fill in this diagram to show attack hits, fires, etc.

LINE No.	QUESTIONS	ANSWERS
29	Lifeboats.....	Number carried <u>4</u> Which used <u>2</u>
30	Lifeboats.....	Number lost <u>2</u> How <u>1 - NOT NEEDED</u> <u>2 - PLANE EXPLOSION</u>
31	Life rafts.....	Number carried <u>4</u> Which used <u>0</u>
32	Life rafts.....	Number lost <u>4</u> How <u>1 - DRIFTED AWAY, SUNK WHEN LAUNCHED</u> <u>3 - NOT NEEDED</u>
33	Life floats.....	Number carried <u>2</u> Which used <u>0</u>
34	Life floats.....	Number lost <u>2</u> How <u>NOT NEEDED</u>
35	Lifesaving suits.....	Number carried <u>56</u> Number used <u>0</u>
36	Were boats, etc., attacked.....	Attacked <u>NO</u> Casualties <u>0</u>
37	Time in each boat, raft, etc.....	<u>2</u> Boat <u>5</u> <u>10</u> min — Raft — — Float — — Boat — — Raft — — Float —
38	Rescued by and where.....	By <u>2B ALLIED SHIP</u> Where <u>AT SCENE</u>
39	Number of gun crew carried (military).....	Officers <u>1</u> Enlisted men <u>28</u>
40	Number ship's crew carried.....	Officers <u>8</u> Radiomen <u>1</u> Unlicensed <u>22</u> <u>31</u>
41	Number passengers and others carried.....	Passengers <u>1</u> Others <u>0</u>
42	Total on board.....	<u>76</u> <u>70</u>
43	Number gun crew injured (military).....	Officers <u>0</u> Enlisted men <u>6</u>
44	Number ship's crew injured.....	Officers <u>2</u> Radiomen <u>0</u> Unlicensed <u>3</u>
45	Number passengers and others injured.....	Passengers <u>0</u> Others <u>0</u>
46	Number gun crew lost (military).....	Officers <u>1</u> Enlisted men <u>3</u>
47	Number ship's crew lost.....	Officers <u>4</u> Radiomen <u>1</u> Unlicensed <u>1</u>
48	Number passengers and others lost.....	Passengers <u>1</u> Others <u>0</u>
49	Total casualties.....	Injured <u>11</u> Lost <u>11</u>
50	Persons lost by (Specify).....	Drowning <u>0</u> Fire <u>0</u> Shell or torpedo <u>11</u> Other causes <u>0</u>
51	Total rescued.....	Gun crew <u>25</u> Officers <u>4</u> Radio operators <u>0</u> Unlicensed <u>30</u> Passengers <u>0</u> Others <u>0</u> Total <u>55</u> <u>59</u>
52	Persons saved by.....	Boats <u>20</u> Rafts <u>0</u> Floats <u>0</u> Suits <u>0</u> Preservers <u>0</u> Other means <u>0</u> No aid <u>39</u> <u>38</u> <u>NOTE</u>
53	Engineering watch below.....	Number on watch below <u>3</u> Number lost below <u>0</u>
54	Number of look-outs.....	<u>7</u>
55	Any defective material.....	<u>NO</u>
56	Any personnel fault.....	<u>NO</u>

COMMENTS, CRITICISMS, AND RECOMMENDATIONS

The comments, criticisms, or recommendations of survivors with respect to safety of seamen and ships involved in war actions are earnestly solicited by Headquarters in order that the fullest provision possible may be made for the safety of American ships and seamen.

U. S. GOVERNMENT PRINTING OFFICE 16-34271-1

NOTE ① 39 MEN ABANDONED BY DIRECTLY BOARDING NAVY DESTROYER WHICH CAME ALONGSIDE.

NOTE: VESSEL WAS LATER PICKED UP DRIFTING AT SEA, BY THE USCGC SPENCER WITH 8 DEAD BODIES ON BOARD, ACCORDING TO A LETTER + PICTURES RECEIVED BY USCG HQ PUBLIC RELATIONS