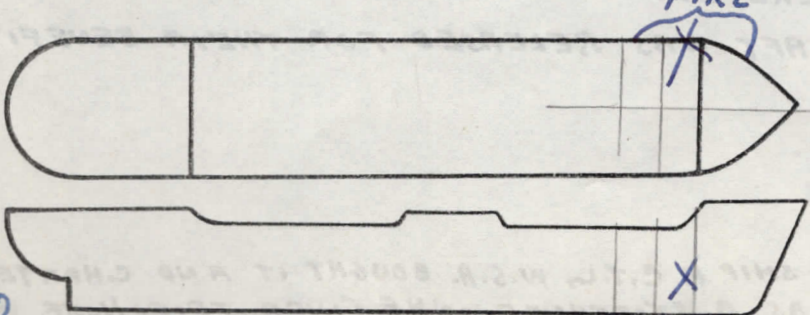


Commandant, U. S. Coast Guard, Washington, D. C.
 Ship YANKEE ARROW Service OCEAN TANKER
 Owner SOCONY VACUUM OIL CO. Operator W.S.A.
 Information furnished by MASTER. Date 30 DECEMBER, 1944

Line No.	QUESTIONS	ANSWERS	
1	Year built and propulsion	Built <u>1921</u>	Propulsion <u>STEAM</u>
2	Tonnage	Gross <u>8046</u>	Net <u>4980</u>
3	Draft loaded (maximum allowed)	Fwd. <u>28'06" (M)</u>	Aft
4	Draft when attacked	Fwd. <u>22'00" (M)</u>	Aft
5	D. W. T. (Emergency Coastwise L. L.)	<u>13,500</u>	
6	Cargo 42's capacity and carried	Capacity <u>98,000 BBLs.</u>	Carried <u>BALLAST</u>
7	Kind of cargo or tank ballast	<u>WATER BALLAST</u>	
8	Was ship gas-free? (Specify)	<u>NO</u>	
9	Voyage	From <u>BONE, ALGERIA</u>	To <u>BIZERTE</u>
	Were routing orders followed	<u>YES</u>	
11	Any criticism of orders	<u>NO</u>	
12	Weather at time of attack	Weather <u>CLEAR</u>	Sea <u>SLIGHT</u>
13	Was enemy sighted? When	<u>NO</u>	
14	Any friendly ships in sight	<u>YES; CONVOY</u>	
15	Were navigation lights on	<u>NO; DAYLIGHT</u>	
16	Date and time of attack	Date <u>8-3-43</u>	Time <u>0705</u>
17	Position	Latitude <u>37° 10' N</u>	Longitude <u>11° 06' E</u>
18	Nature of attack (Give data)	<u>TORPEDOED</u>	
19	Number of hits	<u>1</u>	
20	Location of hits (Mark diagram)	<u>1 - BOW</u>	
	Effect of hits	<u>EXTENSIVE STRUCTURAL DAMAGE NOTED</u>	
22	Was ship armed? What type	<u>YES; 1-5"; 1-3"; 8-20MM</u>	
23	Was armament used? State result	<u>NO</u>	
24	Was oil sprayed over ship	<u>YES; FUEL OIL</u>	
25	Did cargo fire (Mark diagram)	<u>NO; FIRE FOR'D FROM FUEL OIL.</u>	
26	Did tanks explode (Mark diagram)	<u>NO</u>	
27	Was deck ruptured	<u>NO</u>	
28	Did ship break in two	<u>NO</u>	
29	Was SOS sent	<u>NO</u>	
30	Ship's speed	Normal <u>9.0</u>	When attacked <u>8.75</u> When abandoned <u>N.A.</u>
31	Time abandoned, sunk	Abandoned <u>N.A.</u>	Sunk <u>N.S.</u>
32	Was ship reboarded	By whom <u>N.A.</u>	When <u>—</u>
33	Was ship brought in	<u>YES</u> How <u>OWN POWER</u>	Approximate damage <u>EXTENSIVE</u>



Fill in this diagram to show attack hits, fires, explosions, etc.

NOTE ACCORDING TO ONI REPORT VESSEL'S HULL WAS TOO WEAKENED FOR SEA DUTY. SO, VESSEL WAS KEPT AT BIZERTE FOR STORAGE PURPOSES. (OVER)

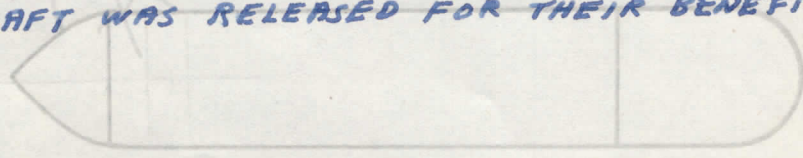
34	Lifeboats	Number carried	4	Which used	0
35	Lifeboats	Number lost	0	How	0
36	Life rafts	Number carried	4	Which used	1 NOTED
37	Life rafts	Number lost	1	How	DRIFTED AWAY
38	Life floats	Number carried	2	Which used	0
39	Life floats	Number lost	0	How	0
40	Lifesaving suits	Number carried	71	Number used	0
41	Were boats, etc., attacked	Attacked	NO	Casualties	0
42	Time in each boat, raft, etc.	Boat	---	Raft	---
43	Rescued by and where	By	NOT ABANDONED		
44	Number of gun crew carried (military)	Officers	1	Enlisted men	27
45	Number of ship's crew carried	Officers	8	Radiomen	1
46	Number of others carried		0	Uncensored	34
47	Total on board		71		
48	Number of gun crew injured (military)	Officers	0	Enlisted men	6
49	Number of ship's crew injured	Officers	0	Radiomen	0
50	Number of others injured		0	Uncensored	16
51	Number of gun crew lost (military)	Officers	0	Enlisted men	2
52	Number of ship's crew lost	Officers	0	Radiomen	0
53	Number of others lost		0	Uncensored	5
54	Total casualties	Injured	22	Lost	7
55	Persons lost by (specify)	Drowning	0	Fire	5
56	Total rescued	Shell or Torpedo	2	Other causes	0
57	Persons saved by	Gun crew	26	Officers	8
58	Engineering watch below	Uncensored	29	Radiomen	1
59	Number of lookouts	Boats	0	Others	0
60	Any defective material	Rafts	0	Total	64
61	Any personnel fault	Floats	0	Suits	0

COMMENTS, CRITICISMS, AND RECOMMENDATIONS

The comments, criticisms, or recommendations of survivors with respect to safety of seamen and ships involved in war actions are earnestly solicited by Headquarters in order that the fullest provision possible may be made for the safety of American ships and seamen.

16-34368-1 U. S. GOVERNMENT PRINTING OFFICE

NOTED - SEVERAL MEN WERE BLOWN OVERBOARD BY FORCE OF EXPLOSION; A LIFERAFT WAS RELEASED FOR THEIR BENEFIT.



(CON'T) RATHER THAN DECLARE SHIP A C.T.L., W.S.A. BOUGHT IT AND CHARTERED IT TO NAVY FOR USE AS A STOREHOUSE - C.H.F. (OVER TELEPHONE WITH W.S.A. ON 7-16-45).