

AE 23

BOOKLET
OF
GENERAL PLANS

BUSHIPS PLAN NO. AE23-845-1976607

End (3)

(3)

TITLE & NUMBER OF PLATES	
TITLE	PLATE NO.
COVER & TITLE	1
GENERAL DIMENSIONS & DATA	2
OUTBOARD PROFILE	3
INBOARD PROFILE	4
05 LEVEL & ABOVE	5
02 LEVEL	6
01 LEVEL	7
MAIN DECK	8
2ND DECK	9
1ST PLATFORM	10
2ND PLATFORM	11
HOLD	12
INNER BOTTOM	13
SECTIONS FWD	14
SECTIONS AFT	15

CORRECTED TO SUIT SHIP		
PLACE	DATE	APPROVED
* PEAK HARBOR NAVSHIPYD	6 MAY 1960	<i>[Signature]</i>
BOSTON NAVAL SHIPYARD	APRIL 20, 1961	<i>[Signature]</i>
INDMAN 3	26.5.66	<i>[Signature]</i> N.V.N.S.
MARYLAND SHIPBUILDING & DRYDOCK CO.	JUNE 1, 1967	

* CORRECTED FROM DATA FURNISHED BY BOSTON NAVSHIPYD (12-T-33)

LIST OF FIREPLUGS				
DECK	FR	AREA	P/S	REMARKS
SHAFT ALLEY	179-180	1 1/2"	S	SHAFT ALLEY
1 ST PLATE	107-108	1 1/2"	S	PASSAGE
1 ST PLATE	115-116	2 1/2"	P	MACHY SPACE
1 ST PLATE	115-116	2 1/2"	S	MACHY SPACE
2 ND DECK	105-106	2 1/2"	S	CREWS LIVING SPACE
2 ND DECK	111-112	2 1/2"	P	CREWS LIVING SPACE
2 ND DECK	114-115	2 1/2"	S	CREWS LIVING SPACE
2 ND DECK	178-179	2 1/2"	S	
MAIN DK	182-183	1 1/2"	S	AIR COMP. MACHY R.M.
MAIN DK	21-22	2 1/2"	S	PASSAGE
MAIN DK	27-28	2 1/2"	S	PASSAGE
MAIN DK	70-71	2 1/2"	P	DK HOUSE
MAIN DK	70-71	2 1/2"	S	DK HOUSE
MAIN DK	99-100	2 1/2"	S	PASSAGE
MAIN DK	99-100	2 1/2"	P	PASSAGE
MAIN DK	107-108	2 1/2"	S	CREWS MESS RM
MAIN DK	128-129	2 1/2"	S	PASSAGE
MAIN DK	139-140	2 1/2"	P	DK HOUSE
MAIN DK	139-140	2 1/2"	S	DK HOUSE
MAIN DK	178-179	2 1/2"	P	DK HOUSE
MAIN DK	178-179	2 1/2"	S	DK HOUSE
01 LEVEL	18-19	2 1/2"	S	3/50 CAL RS RM
01 LEVEL	108-109	2 1/2"	S	PASSAGE
01 LEVEL	118-119	2 1/2"	P	PASSAGE
02 LEVEL	115-116	2 1/2"	S	PASSAGE
02 LEVEL	115-116	2 1/2"	P	PASSAGE
02 LEVEL	118-119	2 1/2"	S	PASSAGE
02 LEVEL	119-120	2 1/2"	P	PASSAGE
02 LEVEL	111-112	2 1/2"	S	PASSAGE
03 LEVEL	127-128	2 1/2"	S	PASSAGE
2 ND DK	71-72	2 1/2"	S	HOLD No 2
1 ST PLATE	71-72	2 1/2"	S	HOLD No 2
2 ND PLATE	71-72	2 1/2"	S	HOLD No 2

MAST HEIGHTS ABOVE WATERLINE IN MINIMUM OPERATING CONDITION

TOP OF KINGPOST #1&2	82'-3"
FORE TOP MAST	108'-6 3/8"
TOP OF KINGPOST #5&6	77'-2 1/8"
MAIN TOP MAST	104'-9 3/8"
BADAR MAST	98'-2"
UHF ANT ON TOP OFFORETOPMAST	103'-10 3/8"
TOP OF AN/SRS-6-CANT.	108'-0 1/8"

CO₂ INFLATABLE LIFEBOATS & SMALL BOATS

- 1 26'-0" M.W. BOAT PLASTIC MARK II
- 1 28'-0" PERSONNEL BOAT MK. 6
- 2 33'-0" UTILITY BOATS MK III, 45 PERSONS
- 24 INFLATABLE LIFE BOATS 15 PERSONS EACH = 360

CARGO BOOMS

QUANT.	LOC AT FR	P/S	SERVICE	LENGTH	CAPACITY
1	46	P	CARGO AMM TRANSFER	50'-0"	10 TONS
1	46	S		50'-0"	
1	72	P		50'-0"	
1	72	S		50'-0"	
2	154	P		50'-0"	
2	154	S		50'-0"	
1	72	P		55'-0"	
1	72	S		55'-0"	

NAVIGATION LIGHTS ABOVE LOAD WATERLINE (EXCEPT AS NOTED)

BLINKER RANGE	BADAR MAST SIGNAL YARD %	90'-11 1/2"
NANCY BEACON	BADAR PLATFORM	93'-4"
MAN OVERBOARD & BREAKDOWN (UPPER)	TOP RAIL BADAR PLATFORM %	103'-3" *(LIGHT LOAD W.L.)
MAN OVERBOARD & BREAKDOWN (LOWER)	BADAR MAST	84'-1"
AIRCRAFT WARNING SIDE	BADAR MAST	77'-0"
ANCHOR FWD	TOP RAIL BADAR PLATFORM %	94'-9 3/8"
ANCHOR AFT	03 LEVEL 6' FWD #2 103 %	40'-8 3/4"
WASTHEAD	JACK STAFF	53'-0"
TOWING (UPPER)	AFT OF HELICOPTER PLATFORM.	31'-0 1/2"
TOWING (LOWER)	FORE TOP MAST	80'-4 7/8"
AIRCRAFT WARNING & SPEED	FORE TOP MAST	92'-4 7/8"
	FORE TOP MAST	86'-4 7/8"
	FORE TOP MAST %	87'-9 1/8"
	MAIN TOP MAST	99'-8 1/2"
		22'-5 1/8"
		21'-6 1/8"
		21'-3 1/8"

ACCOMMODATIONS

PERSONNEL	BED	BERTHS	LOCKERS	BEACON STORAGE	LAVATORIES	SHOWERS	W.C.	URINALS
CAPTAIN	1	1 (SEA CABIN)			* 2	* 2	* 2	
EXECUTIVE OFFICER		1			1	1	1	
W.R. OFFICERS		19			14	3	3	2
CPO		21	21		4	2	3	1
CREW		309	309	20	24	12	17	11
HOSPITAL WARD BATH					1	1	1	1
BARBER SHOP					1			
TOTAL	1	351	330	20	47	21	27	15

*INCLUDES 1 IN SEA CABIN

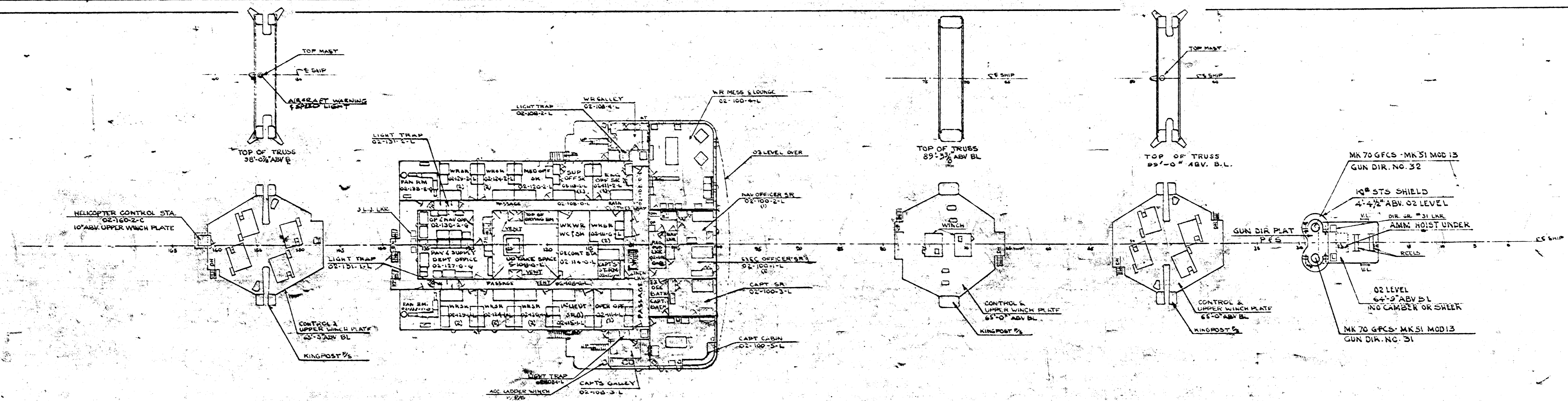
GENERAL DIMENSIONS (APPROXIMATE)

LENGTH BETWEEN PERPENDICULARS	487'-0"
LENGTH OVER-ALL ON L	512'-0 3/4"
BREADTH, EXTREME	72'-3"
DRAFT, TRIAL DISPLACEMENT TO BOTTOM OF KEEL	27'-1 1/4"
FULL LOAD LINE	27'-1 1/4"
LIGHT LOAD LINE	15'-2" AT FP & 22'-8" AT AP
DISTANCE BETWEEN FOREMAST & MAIN MAST	270'-0"
DRAFTS ARE BASED ON APRIL 1, 1967 WEIGHT REPORT FOR AE 23 FAST CONVERSION.	

HEIGHTS OF BRIDGES ABOVE WATERLINE IN MINIMUM OPERATING CONDITION (WATERLINE 15'-2" AT FP & 22'-8" AT AP) SEE PLATE 3

	FWD	
01 LEVEL	AT STEM	47'-5 5/8"
02 LEVEL	6' AFT FR C	54'-2 1/4"
03 LEVEL	12' AFT FR 12	56'-6 3/8"
	MID-SHIP	
01 LEVEL	FR 100	34'-10 1/4"
02 LEVEL	FR 100	42'-10 1/4"
03 LEVEL	12' AFT FR 98	56'-11 1/2"
04 LEVEL	FR 100	58'-10 1/4"
RADAR PLATFORM	6' FWD FR 109	100'-4 3/8"
	AFT	
01 LEVEL	FR 171	33'-1 1/4"
02 LEVEL	FR 171	41'-1 1/4"
MAIN DECK	AT STERN	26'-7 7/8"

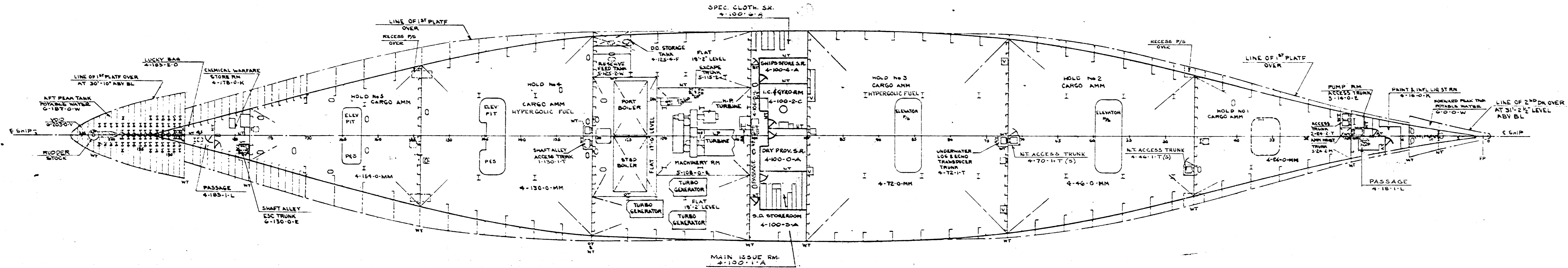
GENERAL DIMENSIONS & DATA



O2 LEVEL

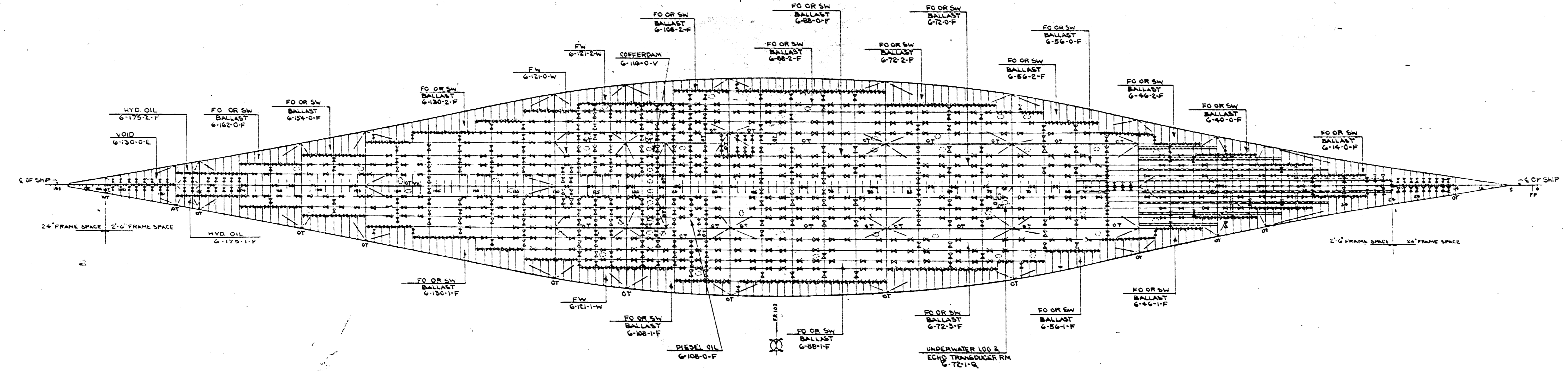
BUSHIPS PLAN NO. AE23-845-1976607

SCALE 1/8" = 1 FOOT



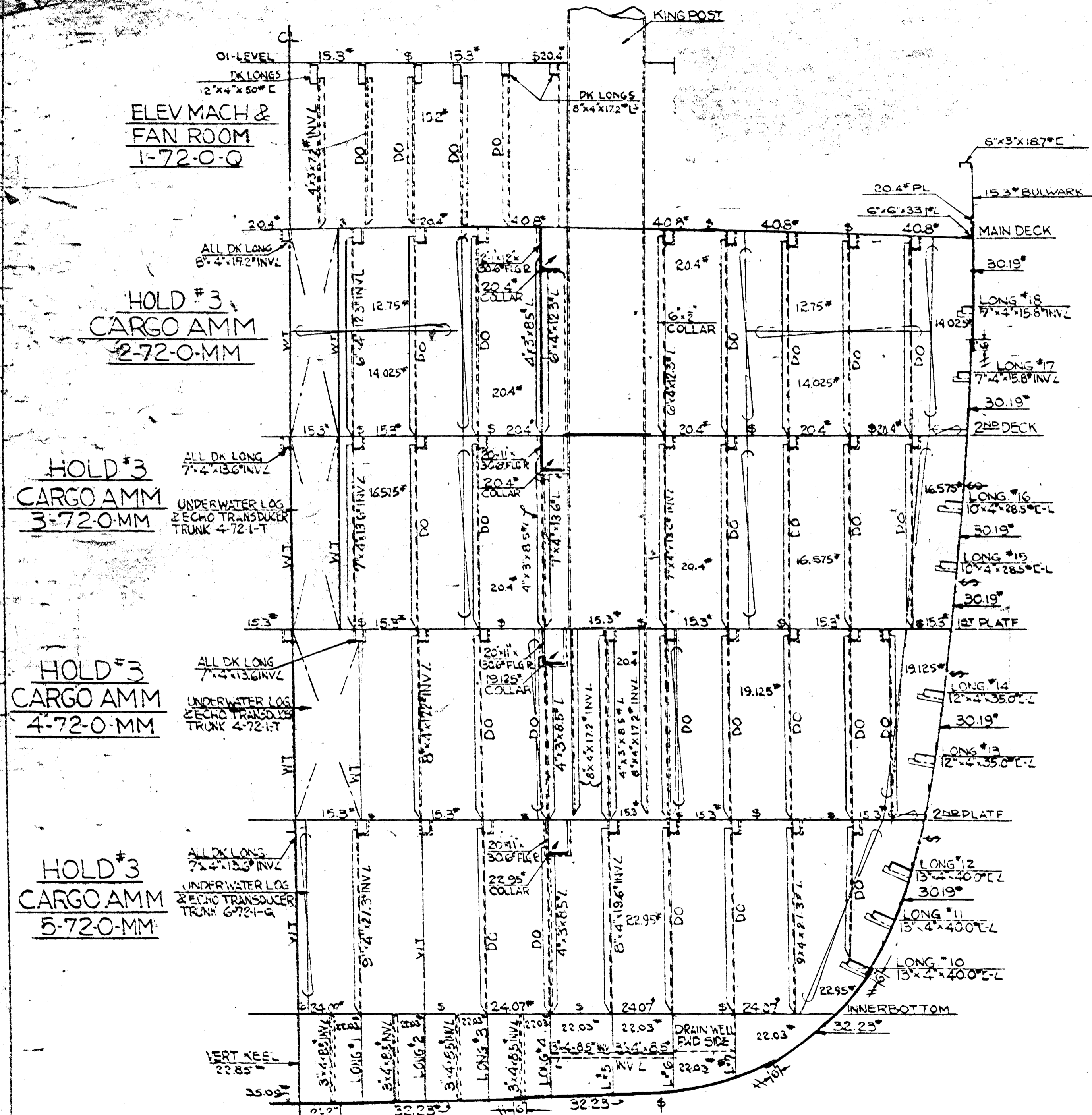
2ND PLATFORM

BUSHIPS PLAN NO. AE23-845-1976607
SCALE 1/16" = 1 FOOT

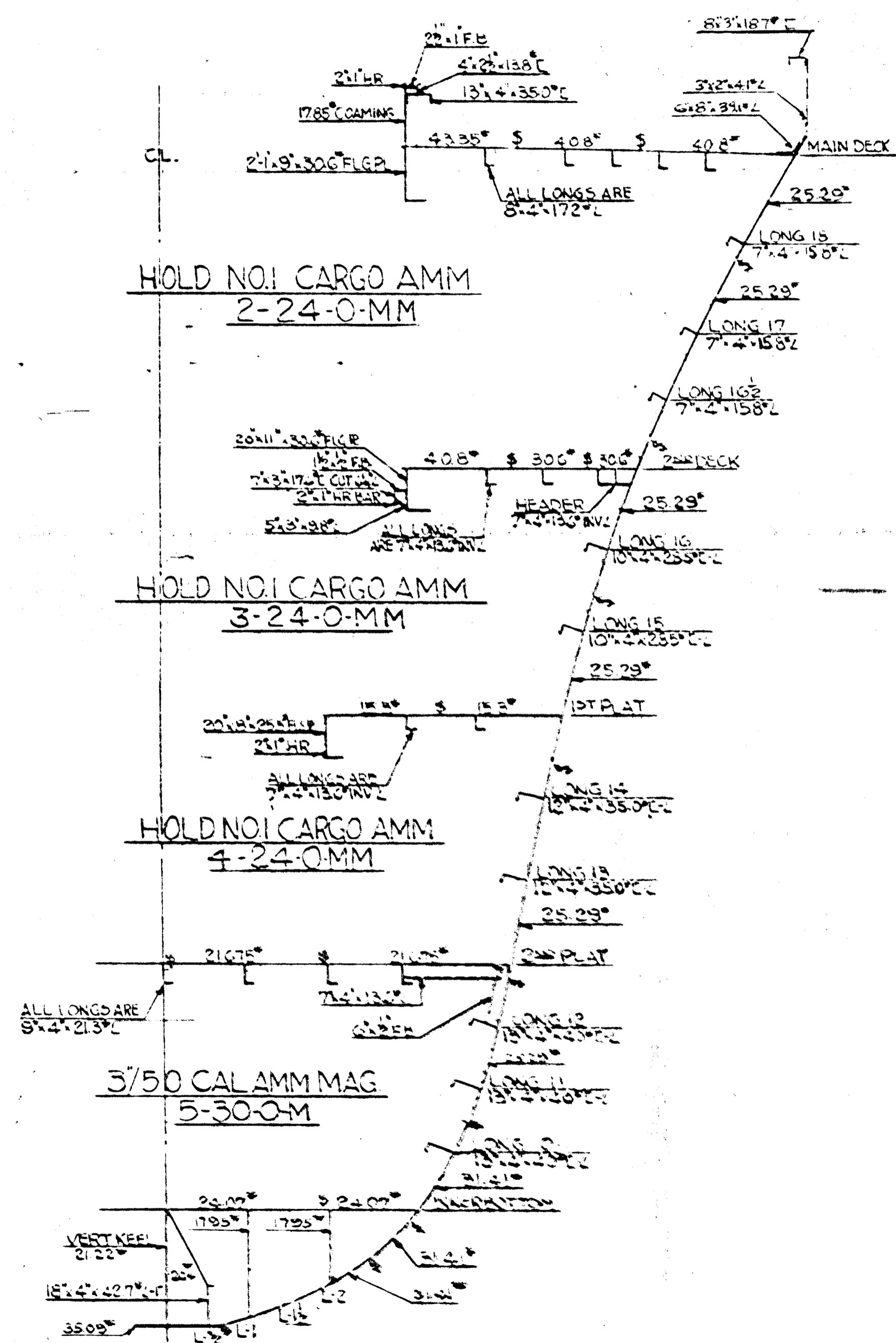


INNER BOTTOM

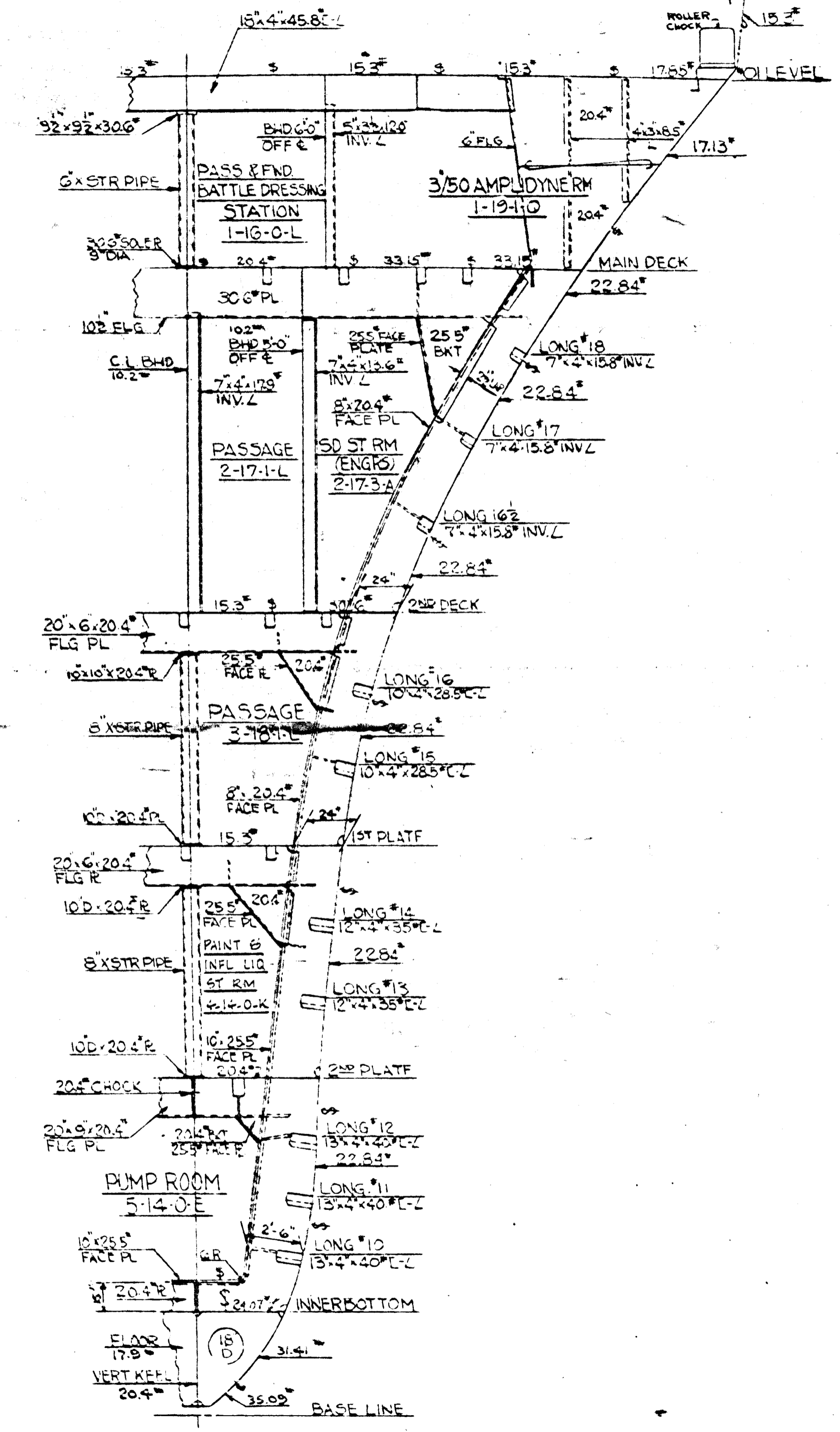
BUSHIPS PLAN NO. AE 23-845-1976607
SCALE 1/16" = 1 FOOT



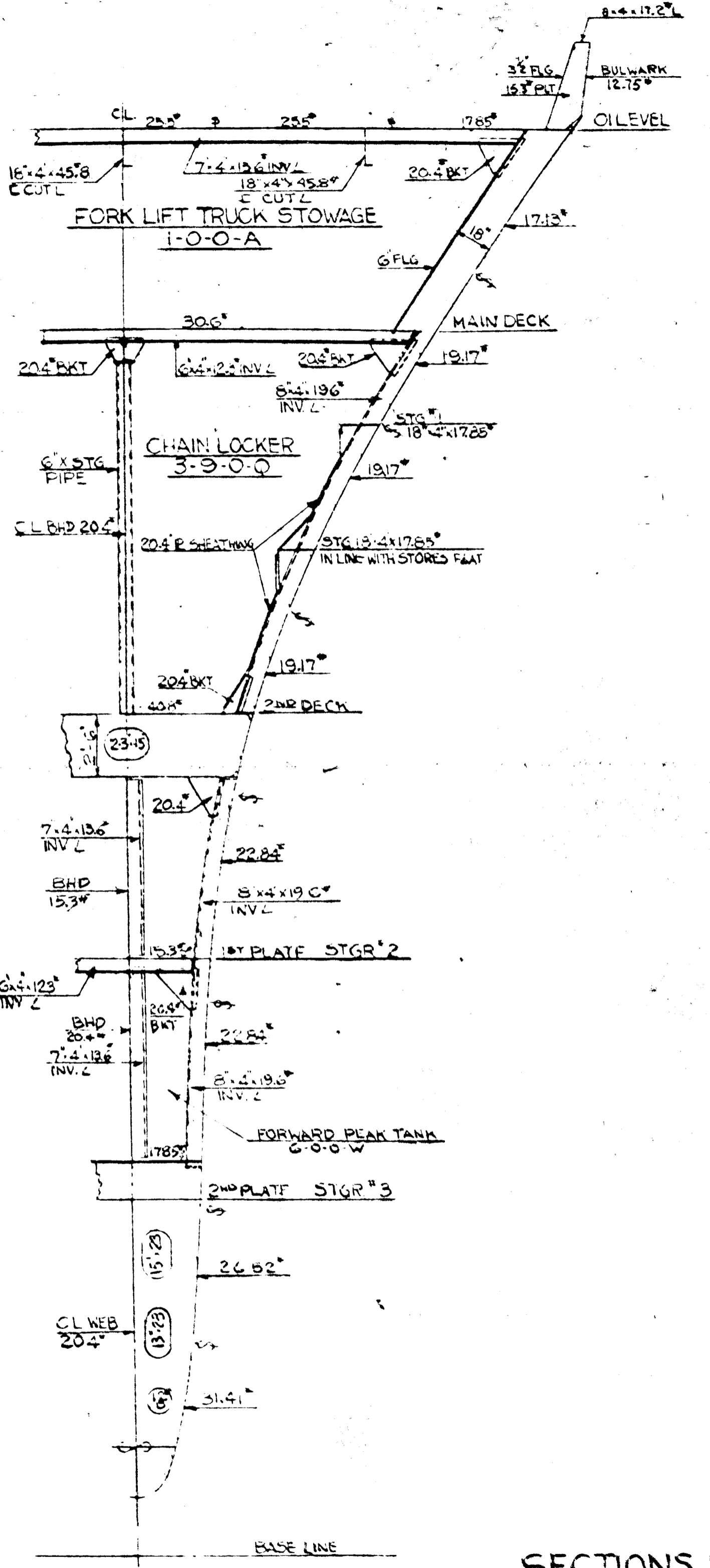
FRAME 72
SECTION LKG FWD



FRAME 35
SECTION LKG FWD

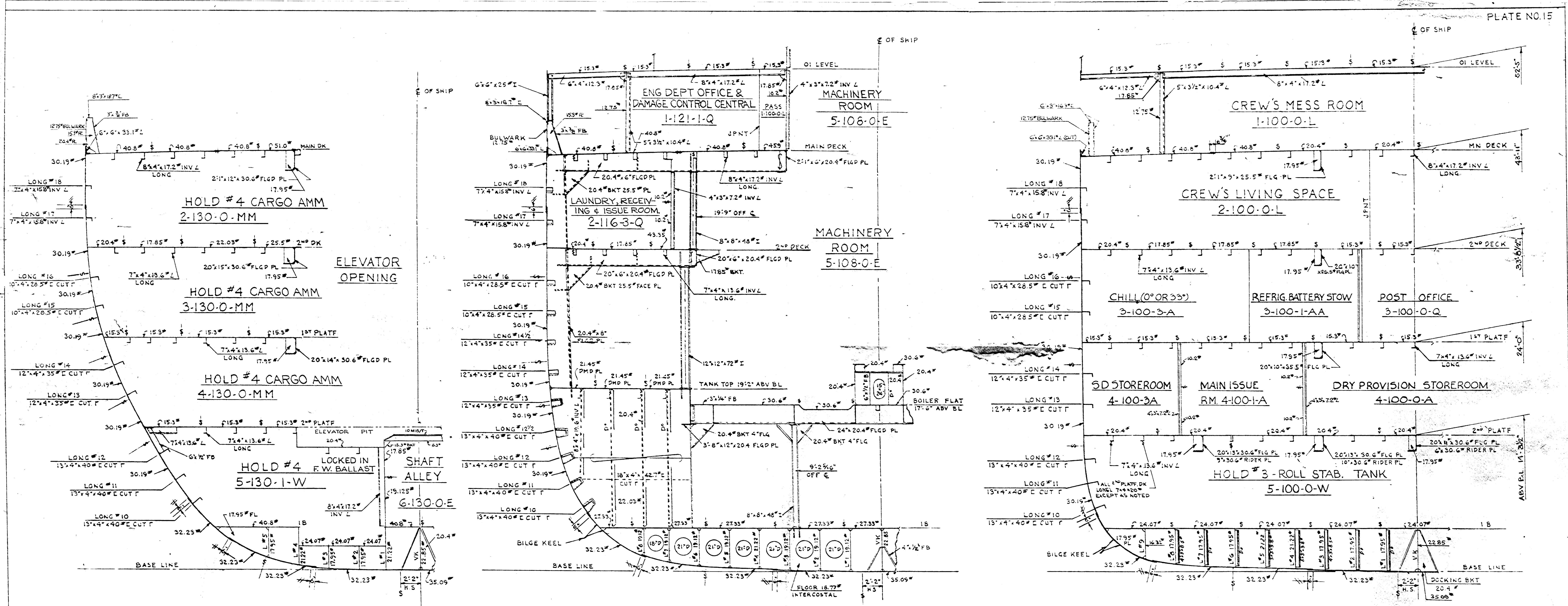


FRAME 19
SECTION LKG FWD



FRAME 11
SECTION LKG FWD

SECTIONS FWD



FRAME 144 STBD SECT LOOKING AFT

FRAME 125 STBD SECT LOOKING AFT

FRAME 102 STBD SECT LOOKING AFT

SECTIONS AFT BUSHIPS PLAN NO. AE23-845-1976607 SCALE 1/4" = 1 FOOT