

REVISIONS

REV	PLATE	DESCRIPTION	U S N	
			DATE	APPR
©	ALL	PLAN REVISED AT CHARLESTON NAVAL SHIPYARD TO AGREE WITH INFORMATION FURNISHED BY SHIP 1-24-1964. <i>Fuc.</i>	9/6/64	<i>W. H. B.</i> <i>J. B. S.</i>
Ⓓ	1,02,03,6, 7,8,9,10, 11,12,13, 17 & 18	PLAN REVISED AT CHARLESTON NAVAL SHIPYARD TO AGREE WITH "MARKED-UP" BLUE LINE PRINT FURNISHED BY SHIP 5-8-68.	5/13/68	<i>W. H. B.</i> <i>J. B. S.</i>
E	ALL	PLAN CORRECTED TO AGREE WITH SHIP AS CHECKED AT CHASNAVSHYD 12-27-68. <i>W. H. B.</i>	12/27/68	<i>W. H. B.</i>
F	ALL	CORRECTED TO SUIT OVERHAUL/CVRSN OF 1975 BY PUGET SOUND NAVAL SHIPYARD	6/23/75	<i>R. S. W.</i>

SUBMARINE TENDER AS-32

CONTENTS	
TITLE	PLATE NO
COVER SHEET	1
GENERAL INFORMATION DATA	2
OUTBOARD PROFILE	3
INBOARD PROFILE	4
O4 LEVEL	5
O3 LEVEL	6
O2 LEVEL	7
O1 LEVEL	8
MAIN DECK	9
SECOND DECK	10
THIRD DECK	11
FOURTH DECK	12
FIRST PLATFORM	13
SECOND PLATFORM	14
HOLD	15
DOUBLE BOTTOM	16
TYPE SECTIONS FWD	17
TYPE SECTIONS AFT	18

DECLASSIFIED IAW
COMNAVSEA SYSCOM
LTR 5510.5
SER 047162/1957
DTD 12-7-99
DISTRIBUTION STATEMENT A:
APPROVED FOR PUBLIC RELEASE
DISTRIBUTION IS UNLIMITED
NAVSEAINST 5510.1H

PLATE NO 1



BOOKLET OF GENERAL PLANS

SELECTED RECORD DRAWING
PREPARED BY THE
INGALLS SHIPBUILDING
CORPORATION

SERIAL NO	AS-32-800-2105099
-----------	-------------------

GENERAL DIMENSIONS

LENGTH, BETWEEN PERPENDICULARS, FR 0 - FR 14 1/2	570'-0"
LENGTH, OVERALL	599'-1"
BREADTH, MOLDED	83'-0"
DRAFT, ABOVE BASELINE	23'-0"
DRAFT, ABOVE PROPELLER TIP & RUDDER	24'-0"
DRAFT, NAVIGATIONAL	24'-4 3/8"
DRAFT, ABOVE BOTTOM OF BILGE KEEL	24'-4 3/8"
PROJECTION FORWARD OF FORWARD PERPENDICULAR	12'-1"
PROJECTION AFT OF AFT PERPENDICULAR	17'-0"

HEIGHTS

MASTS	HEIGHT ABOVE 23'-0" DESIGN WATERLINE
FOREMAST	118'-0"
MAINMAST	113'-6"
ANTENNA MAST (ON FOREMAST)	139'-1"
MIZZEN MAST	113'-6"

PLATFORMS	HEIGHT ABOVE 23'-0" DESIGN WATERLINE
ANTENNA PLATFORM ON FOREMAST	90'-0"
ANTENNA PLATFORM AT TOP OF FOREMAST	139'-1"
WSC-1 FOUNDATION AT TOP OF MAINMAST	123'-6"

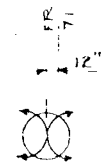
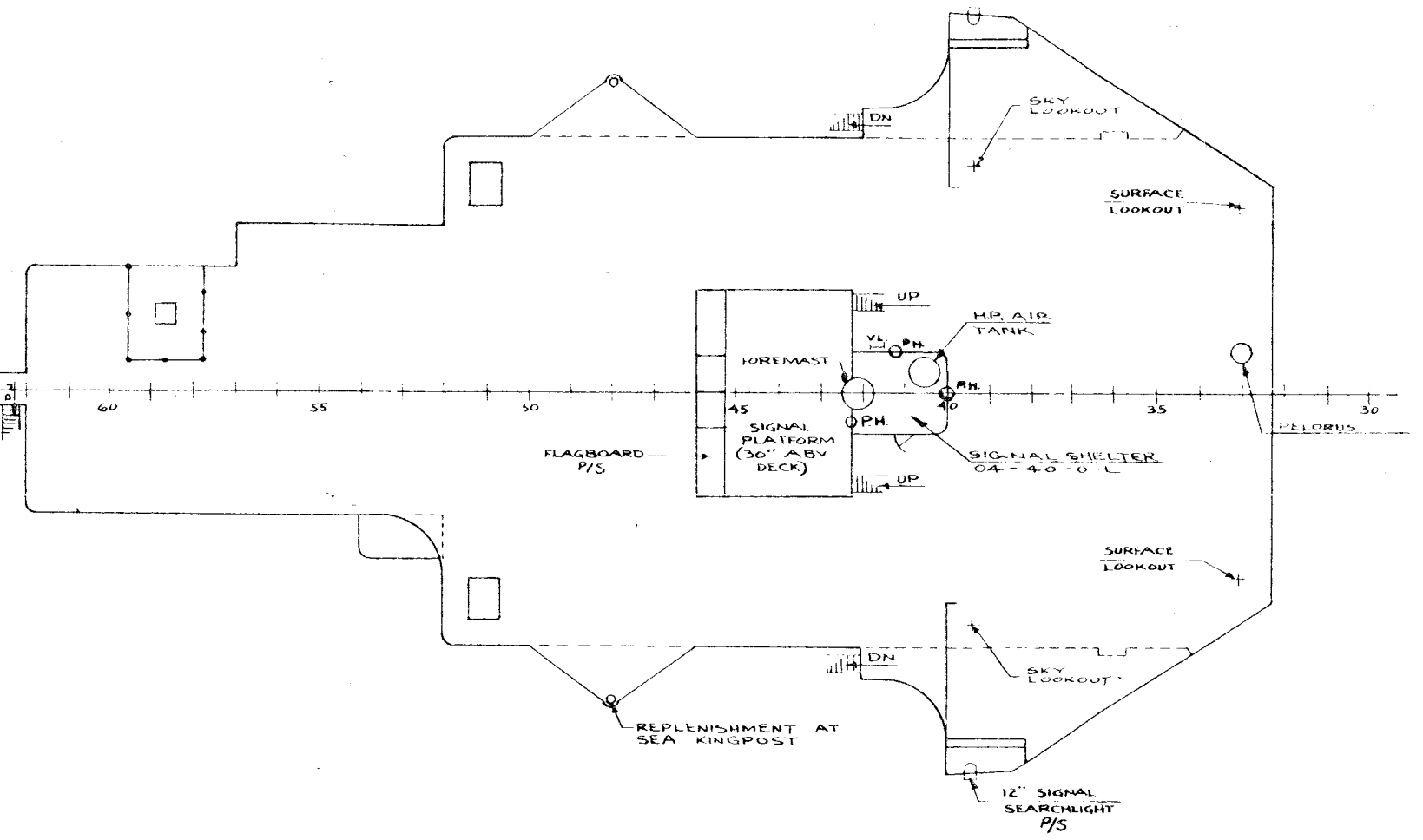
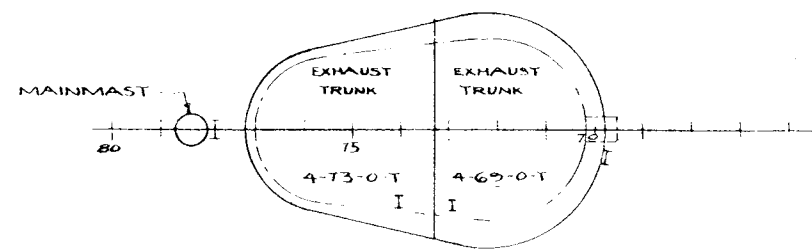
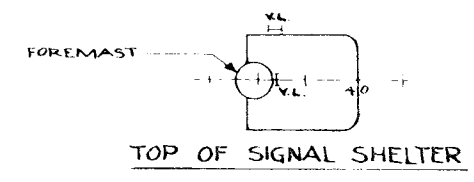
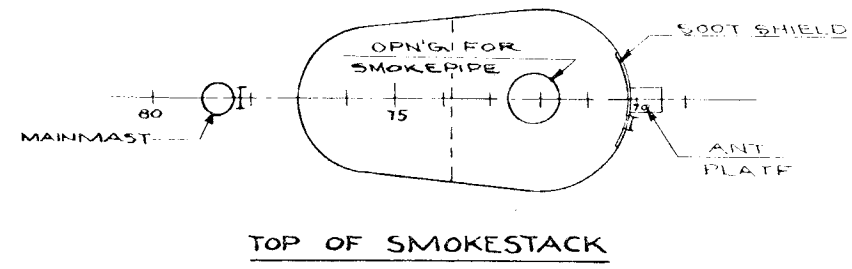
HORIZONTAL DISTANCE

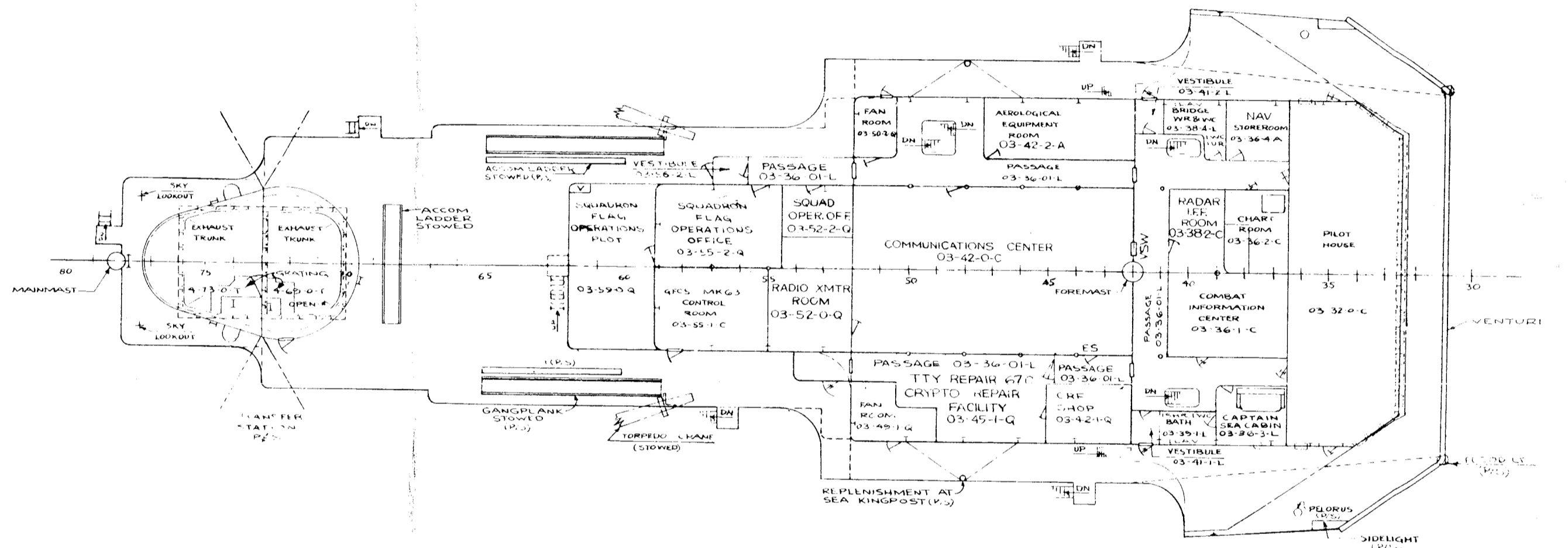
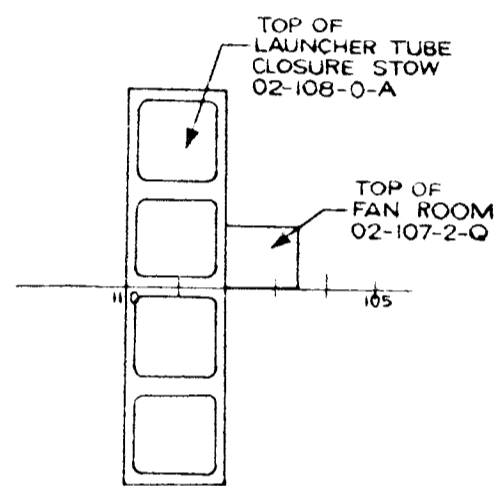
* BETWEEN MASTHEAD & RANGE LIGHT 149'-4"

* MEASURED DIMENSION MAY 1975

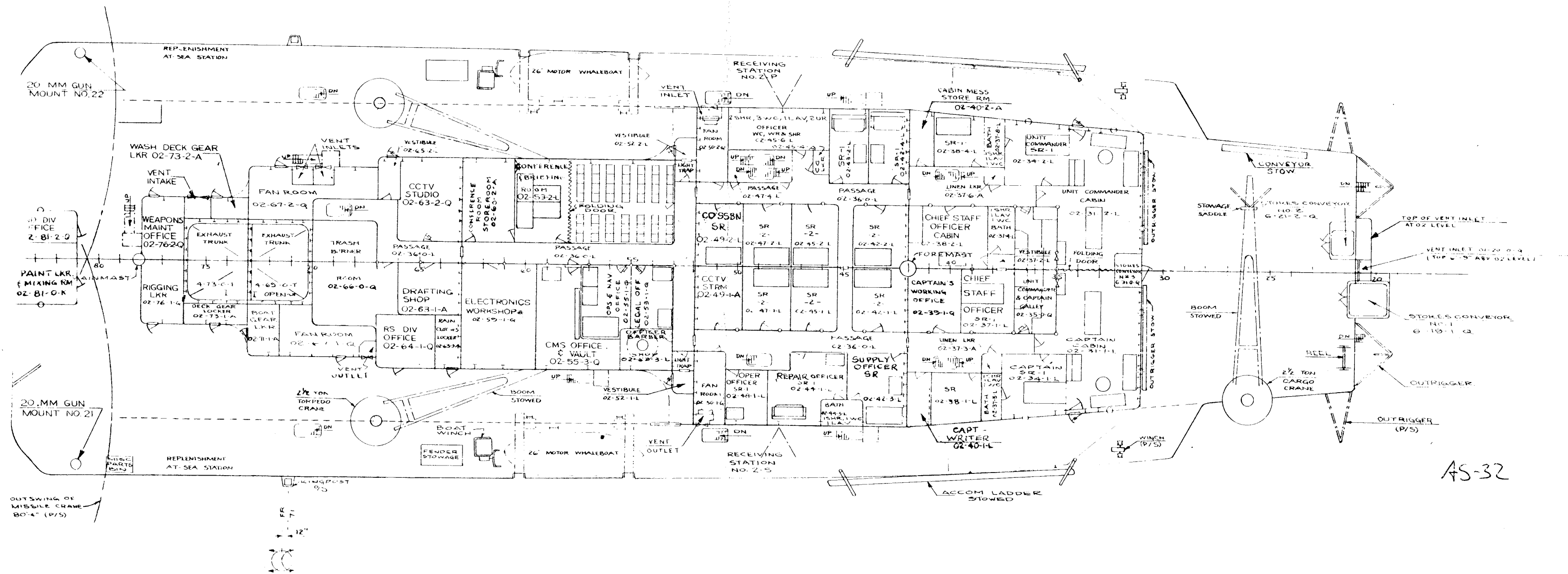
LIGHT DATA

TITLE	No	LOCATION	HEIGHT ABOVE 23'-0" DESIGN WATERLINE TO CTR OF LIGHT
AIRCRAFT WARNING LIGHT	1	MIZZEN MAST	ABT. 114'-9"
* FWD ANCHOR LIGHT	1	JACKSTAFF 12" FWD FR B CL	69'-2"
* SIDE LIGHTS	2	03 LEVEL BULWARK FR 35 1/2 P/S	57'-8"
* MASTHEAD LIGHT	1	FOREMAST	90'-6 1/2"
AIRCRAFT WARNING LIGHTS	2	MAST ON FOREMAST PLATFORM	ABT 139'-7"
BLINKER LIGHTS	2	FOREMAST YARDARM P/S	119'-0"
* RANGE LIGHT	1	MAST ON MAINMAST PLATFORM	124'-9 1/8"
SPEED & ACFT WARNING LIGHTS	2	MAINMAST PLATFORM RAILS P/S	116'-8"
* MAN OVERBOARD, BREAKDOWN & UNDERWATER TASK LIGHTS	4	FOREMAST BRACKET	126'-5 5/8" & 138'-5 5/8"
* UNDERWATER TASK LIGHT (MID)	2	FOREMAST BRACKET	132'-5 5/8"
* AFT ANCHOR LIGHT	1	ENSIGN STAFF CL	60'-5 1/4"
* TOWING LIGHTS	2	FOREMAST HALYARDS P/S	84'-5 5/8" & 96'-6 1/8"
* STERN LIGHT (CLEAR)	1	TRANSOM RAIL	34'-3"
WAKE LIGHT	1	TRANSOM RAIL	33'-6"
KOTAKY BEACON	1	MIZZEN MAST	114'-6"
STEERING LIGHT	1	JACKSTAFF 12" FWD FR B CL	64'-0 5/16"



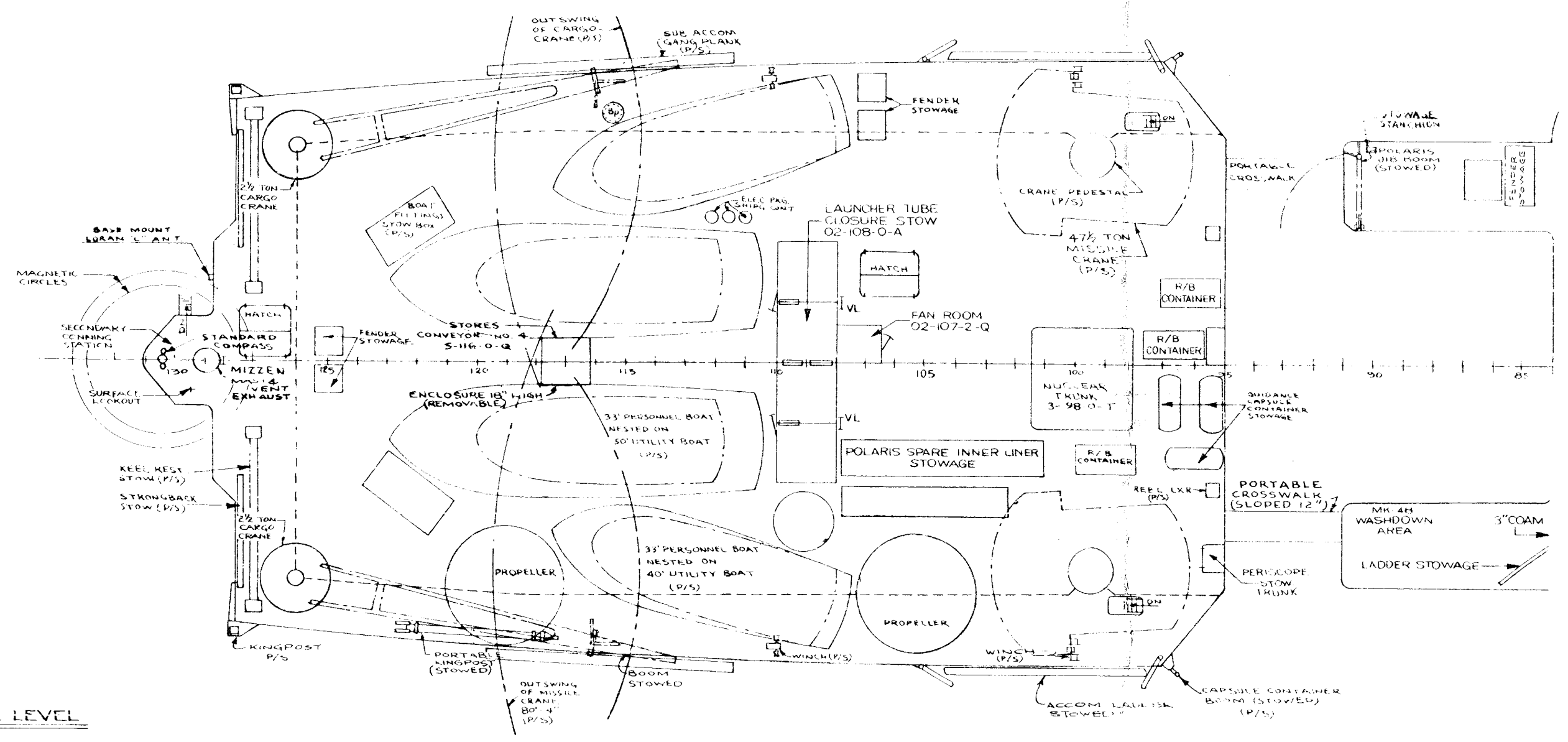


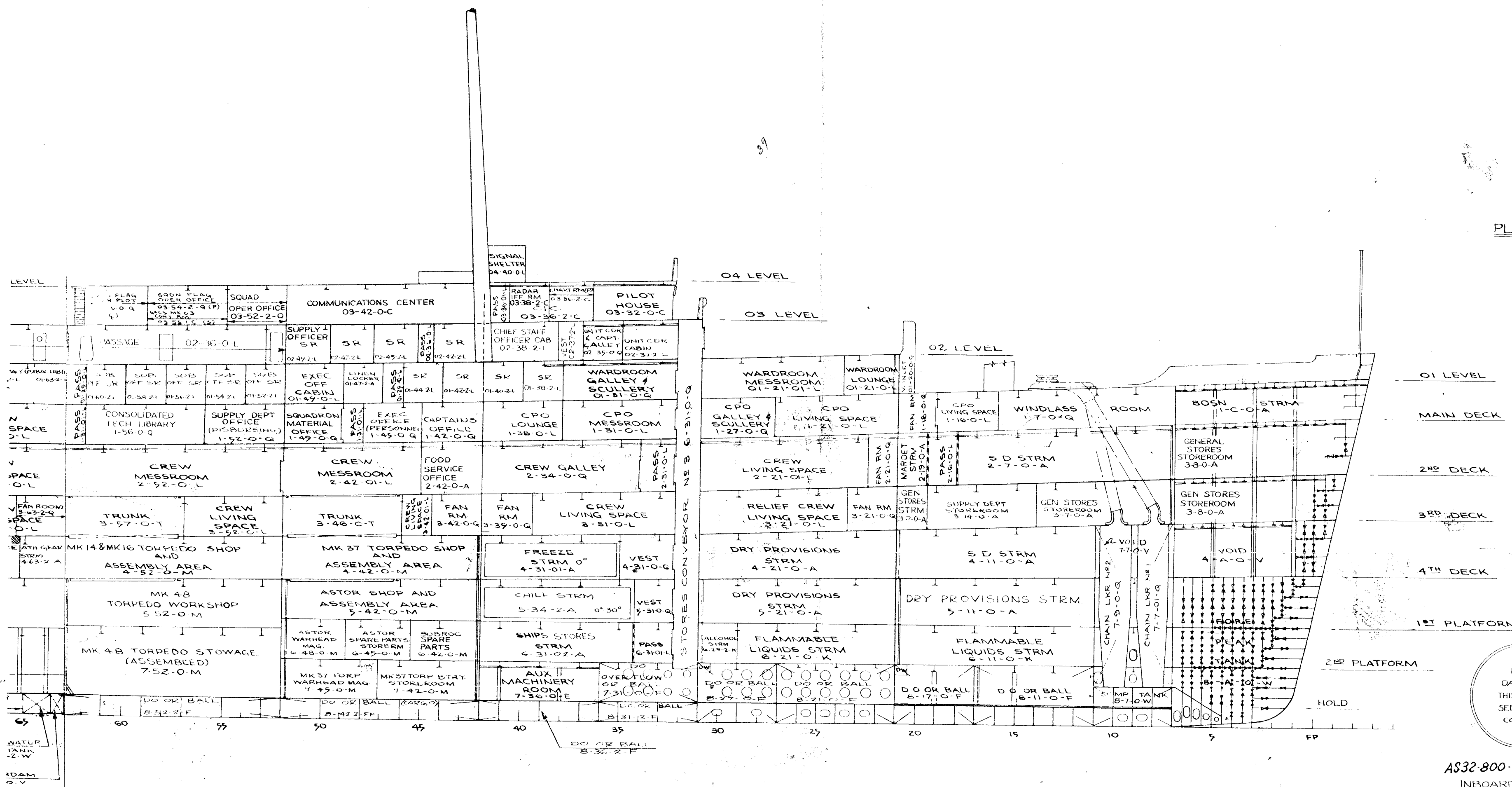
AS-32



AS-32

02 LEVEL



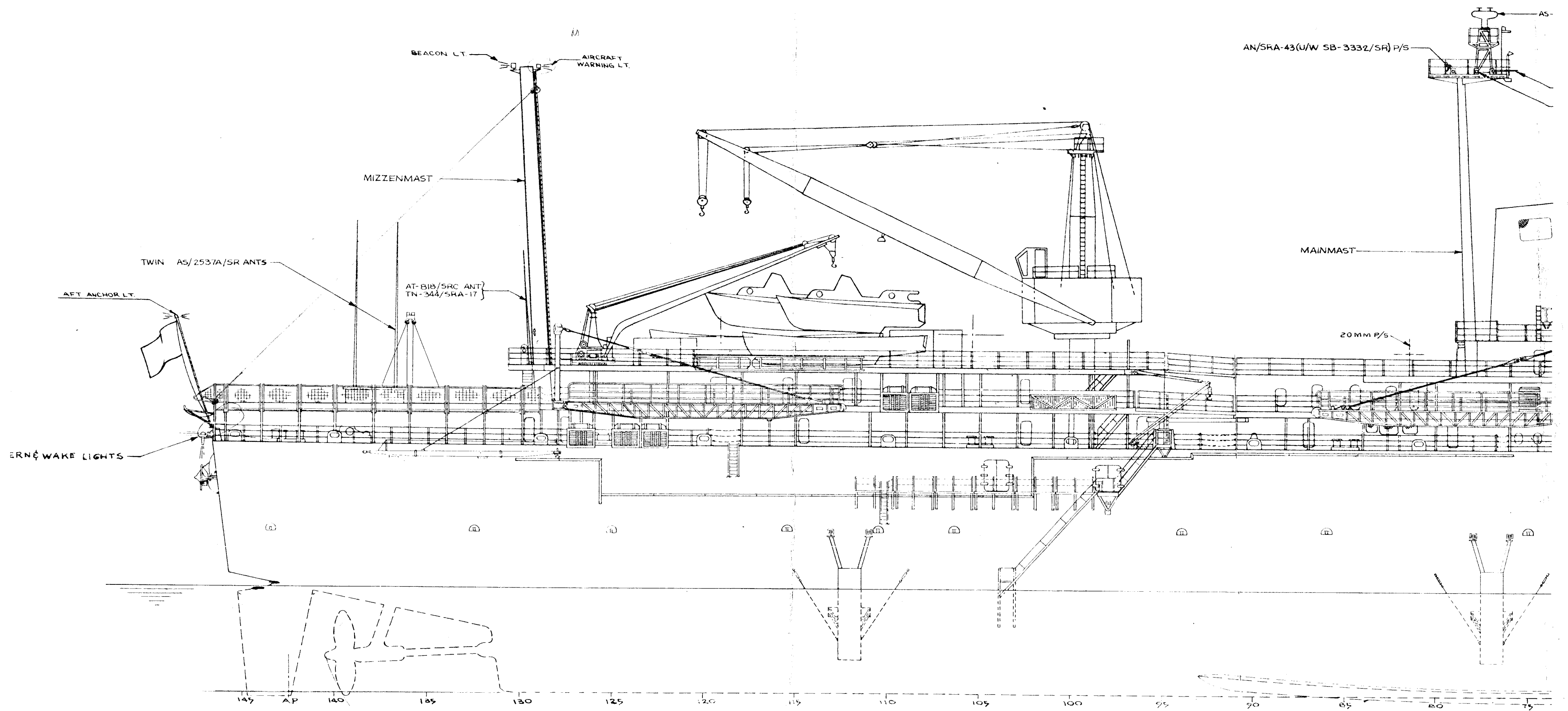


FOR
DATE OF
THIS ISSUE
SEE FRONT
COVER

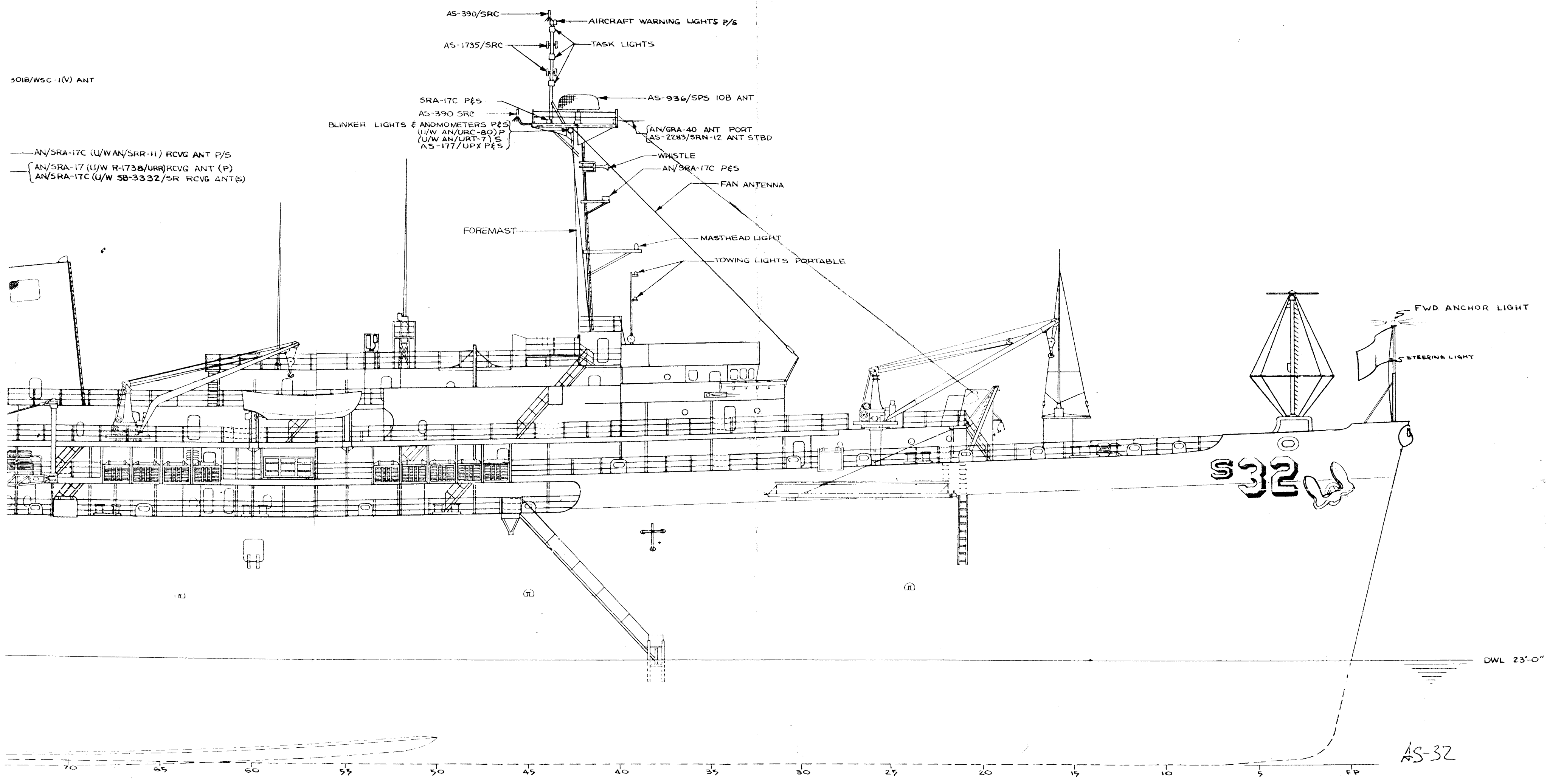
AS32-800-2105099
INBOARD PROFILE

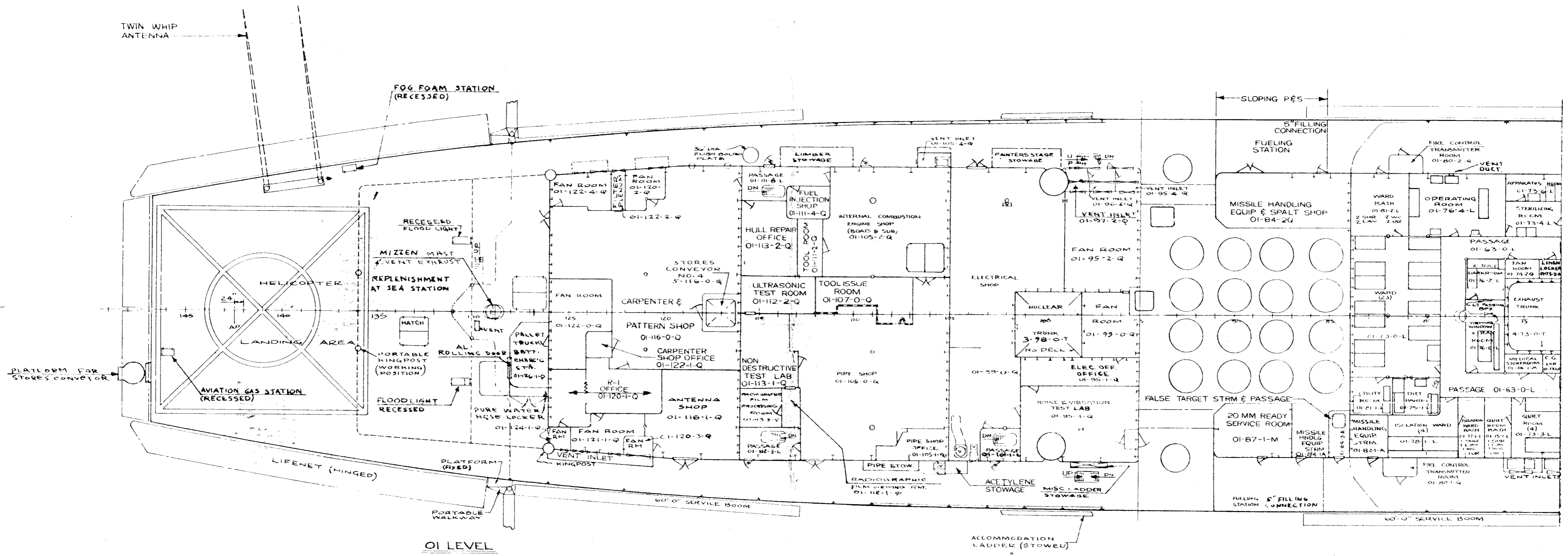
SCALE: 1/4" = 1'-0"

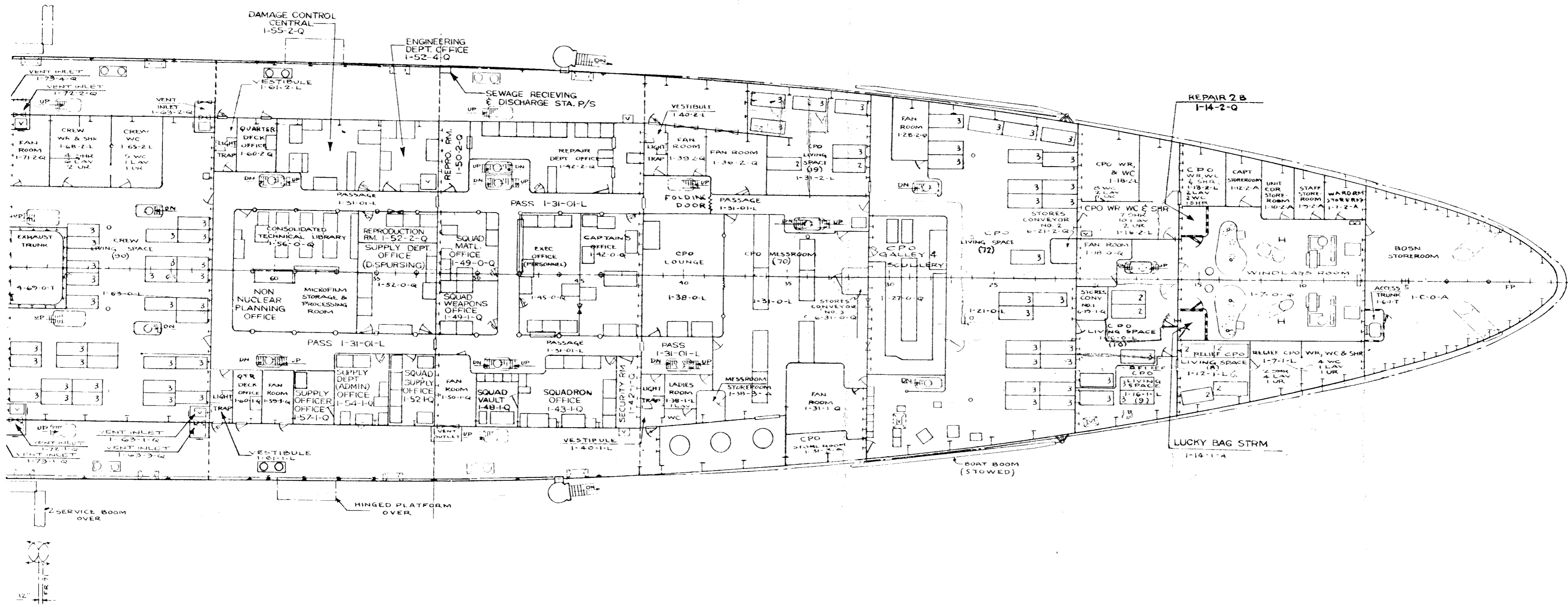
AS-32

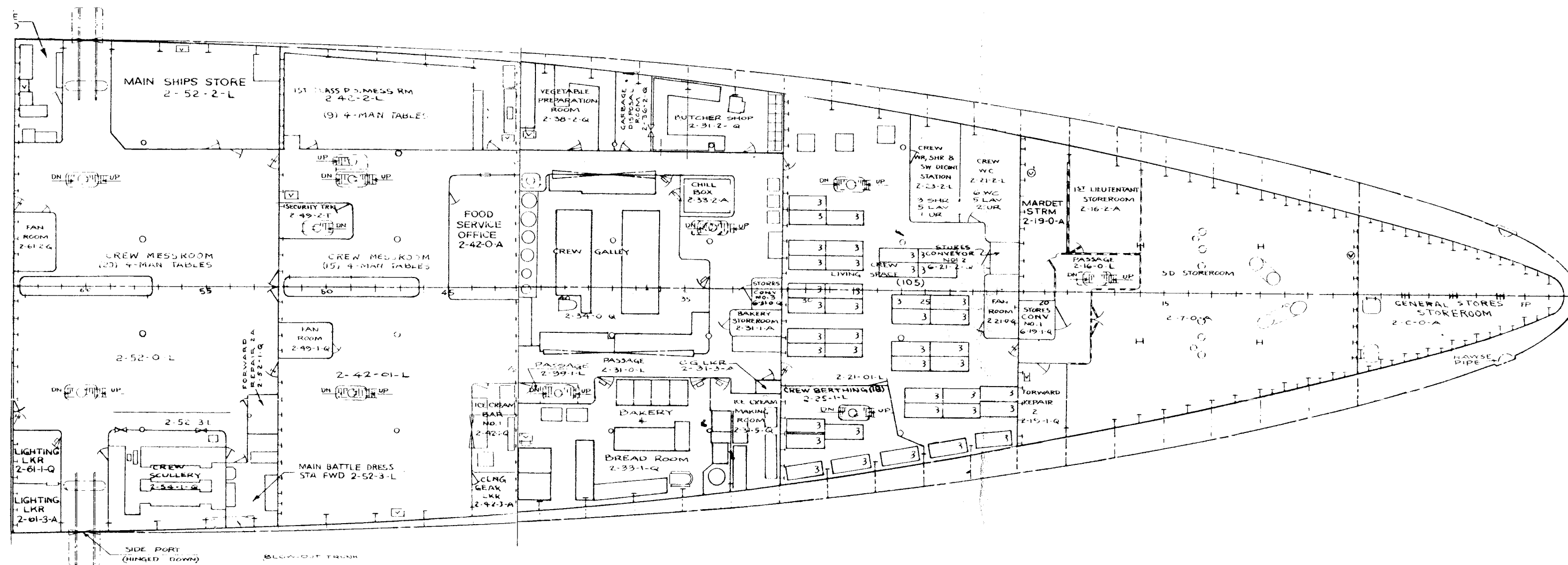


OUTBOARD PROFILE





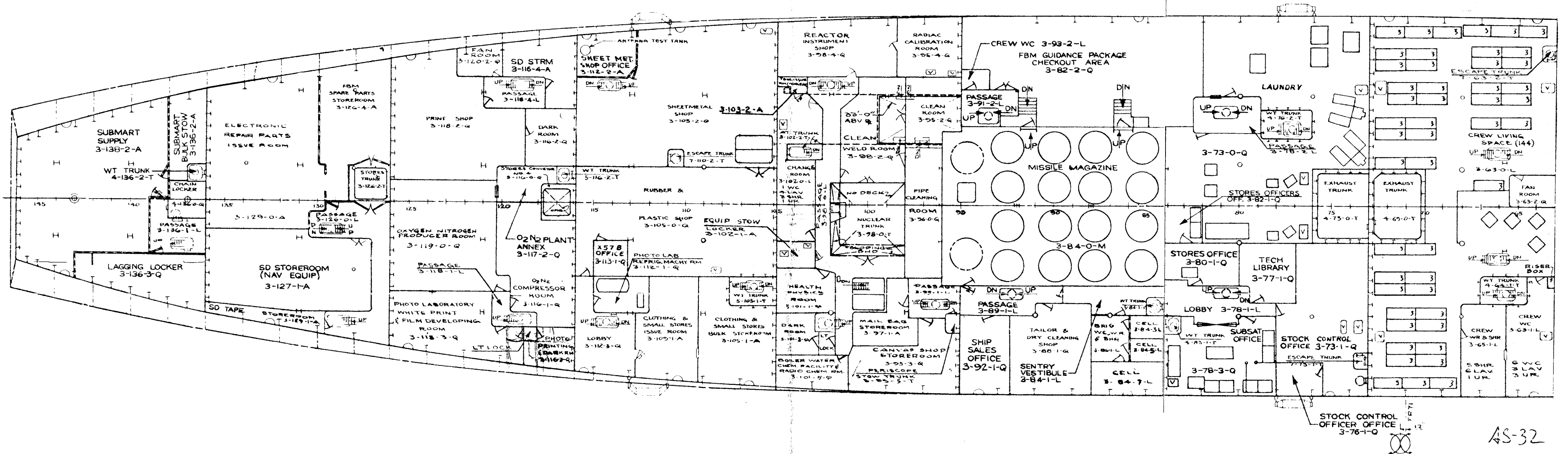




FOR
DATE OF
THIS ISSUE
SEE FRONT
COVER

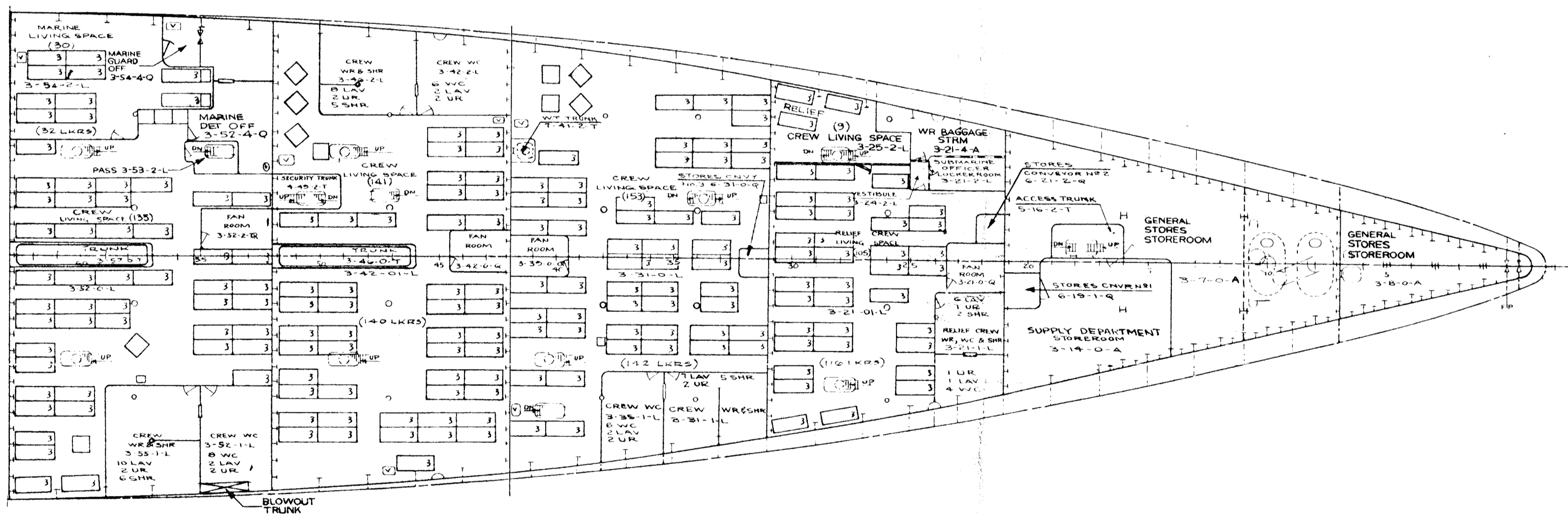
4332-800-2105099
SECOND DECK

0 4 8 12
SCALE: 1/16"=1'-0"



STOCK CONTROL OFFICER OFFICE 3-76-1-Q

AS-32

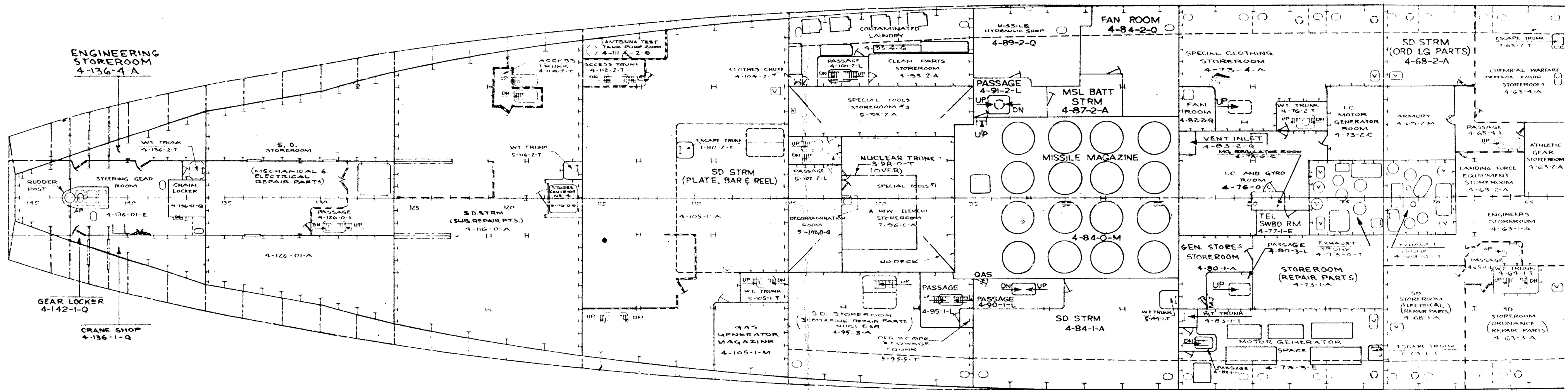


FOR
DATE OF
THIS ISSUE
SEE FRONT
COVER

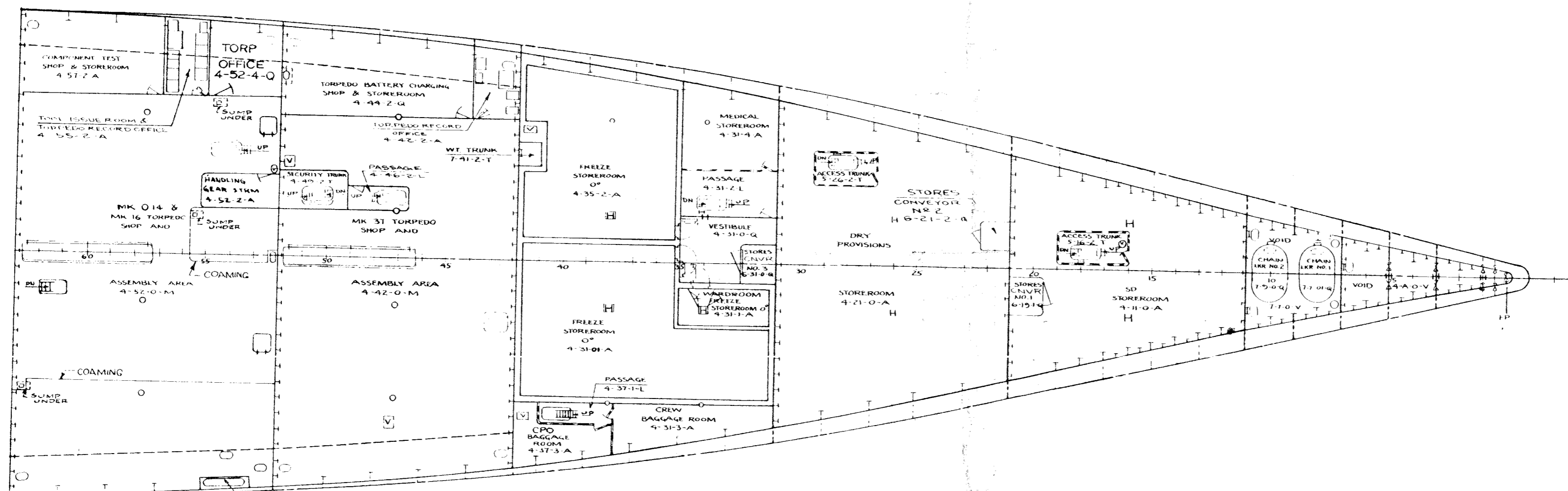
AS32-800-2105099

THIRD DECK

SCALE: 1/8" = 1'-0"

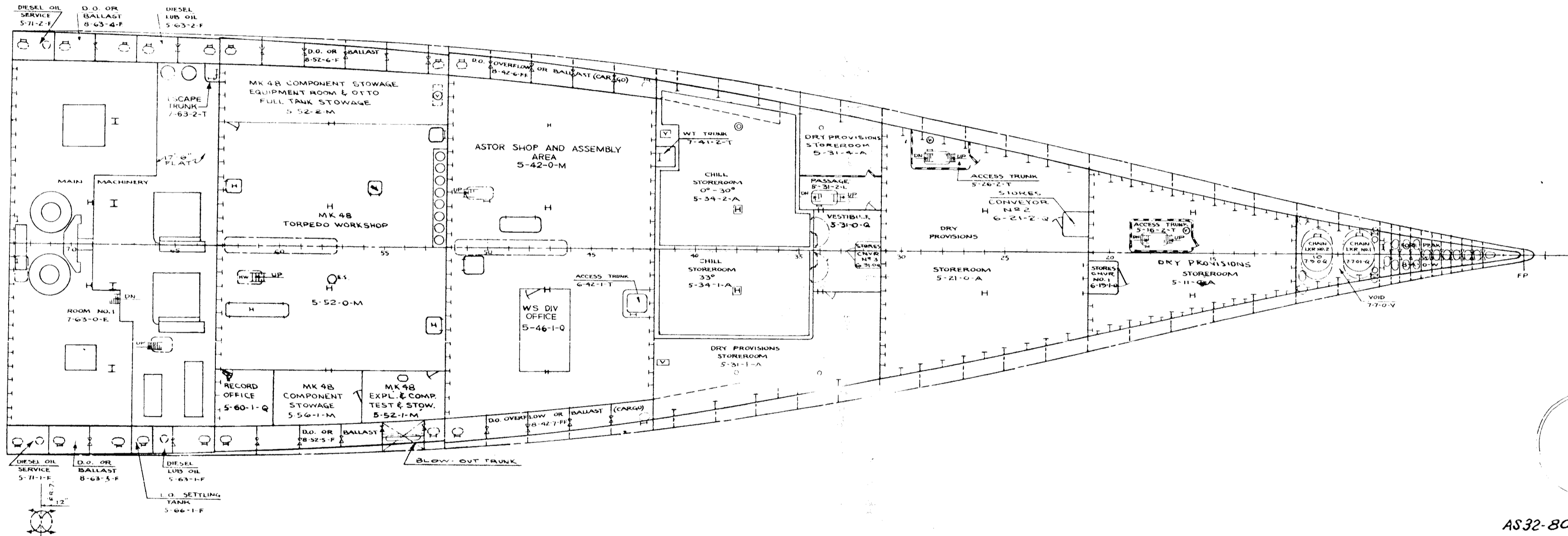


AS-32



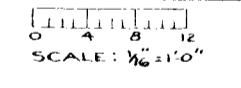
FOR
DATE OF
THIS ISSUE
SEE FRONT
COVER

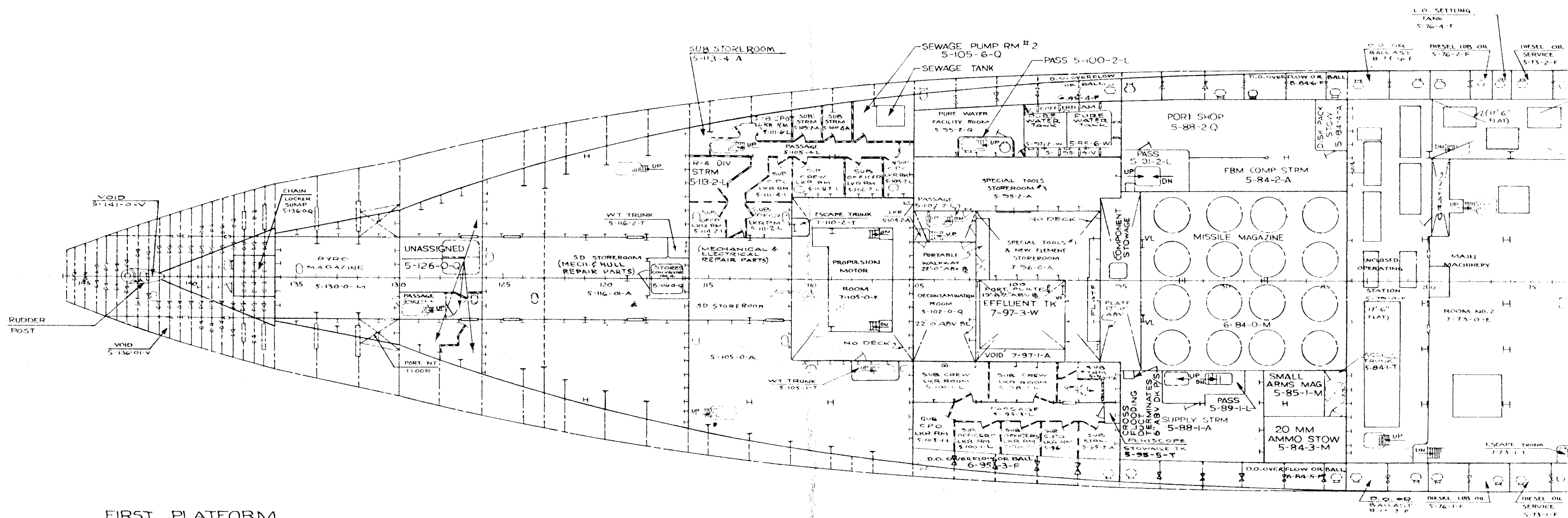
AS32-800-2105099
FOURTH DECK
0 4 8 12
SCALE: 1/16"=1'-0"



FOR
DATE OF
THIS ISSUE
SEE FRONT
COVER

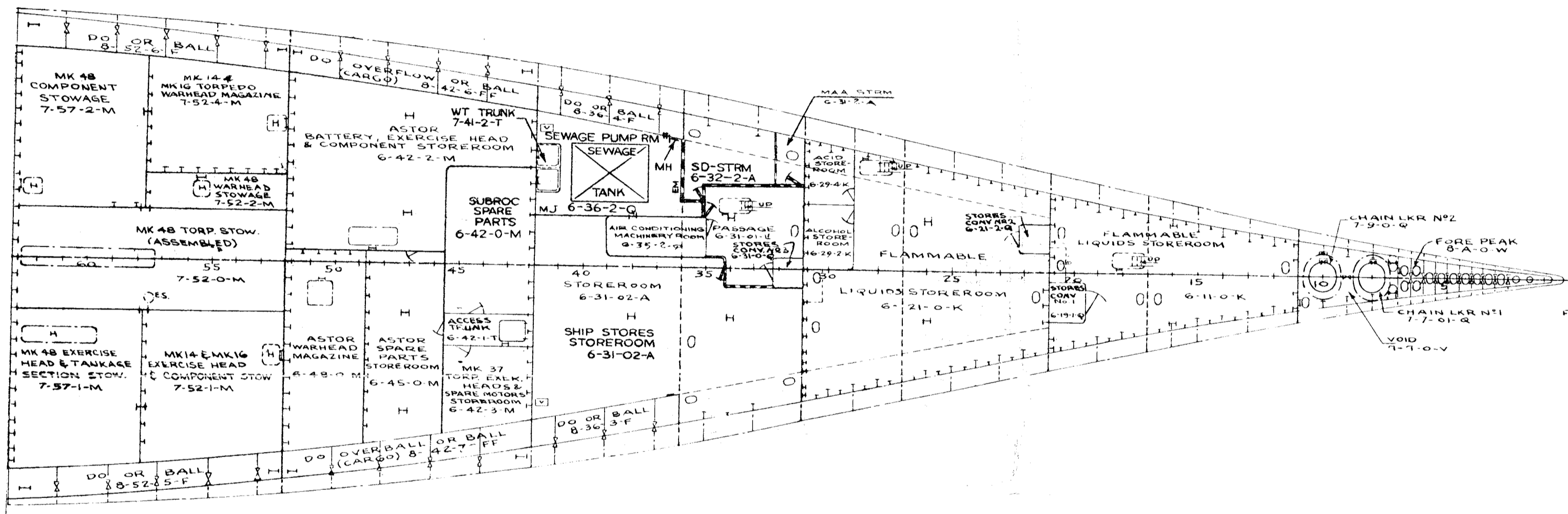
AS32-800-2105099
FIRST PLATFORM





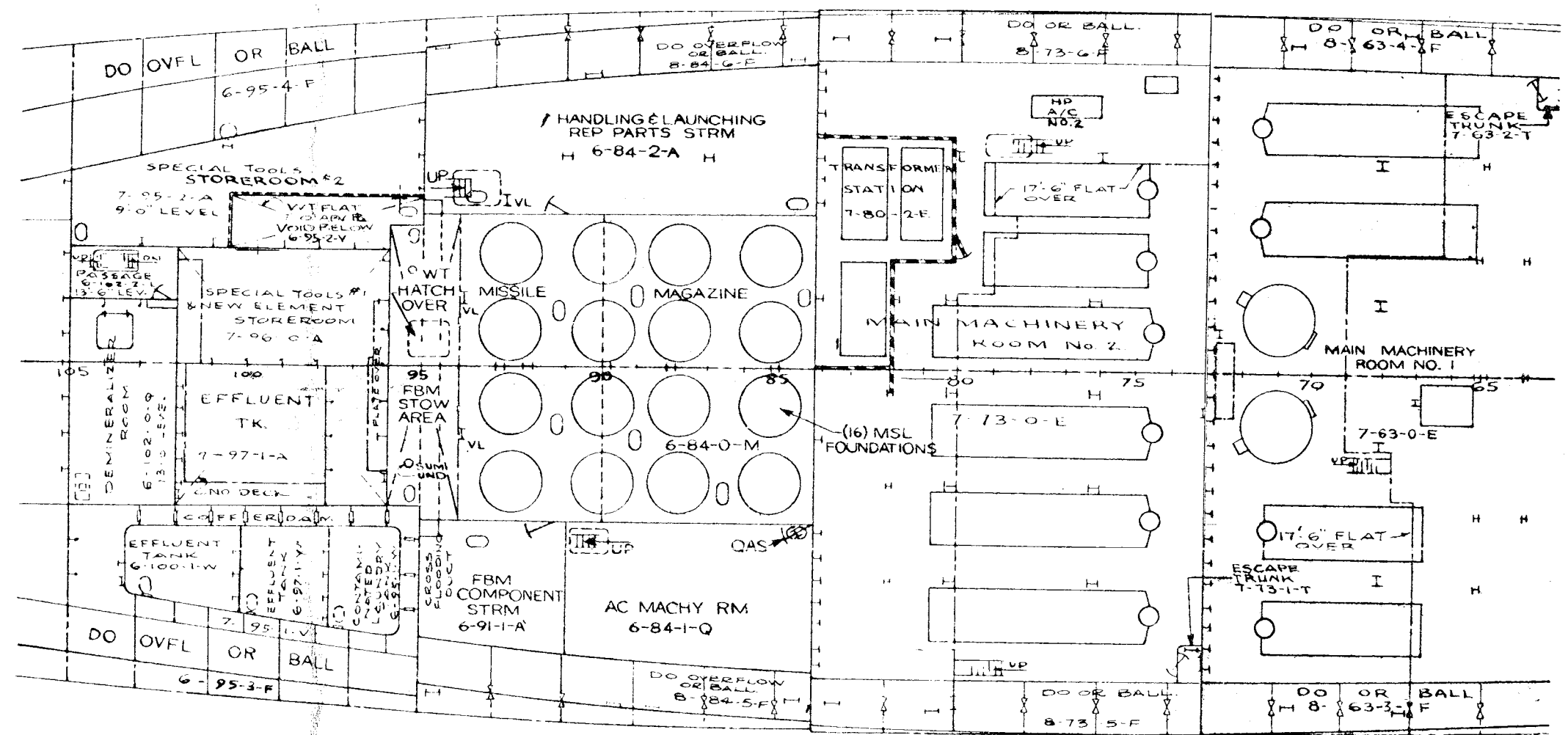
FIRST PLATFORM

AS-32



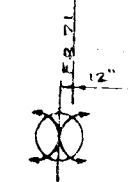
FOR
DATE OF
THIS ISSUE
SEE FRONT
COVER

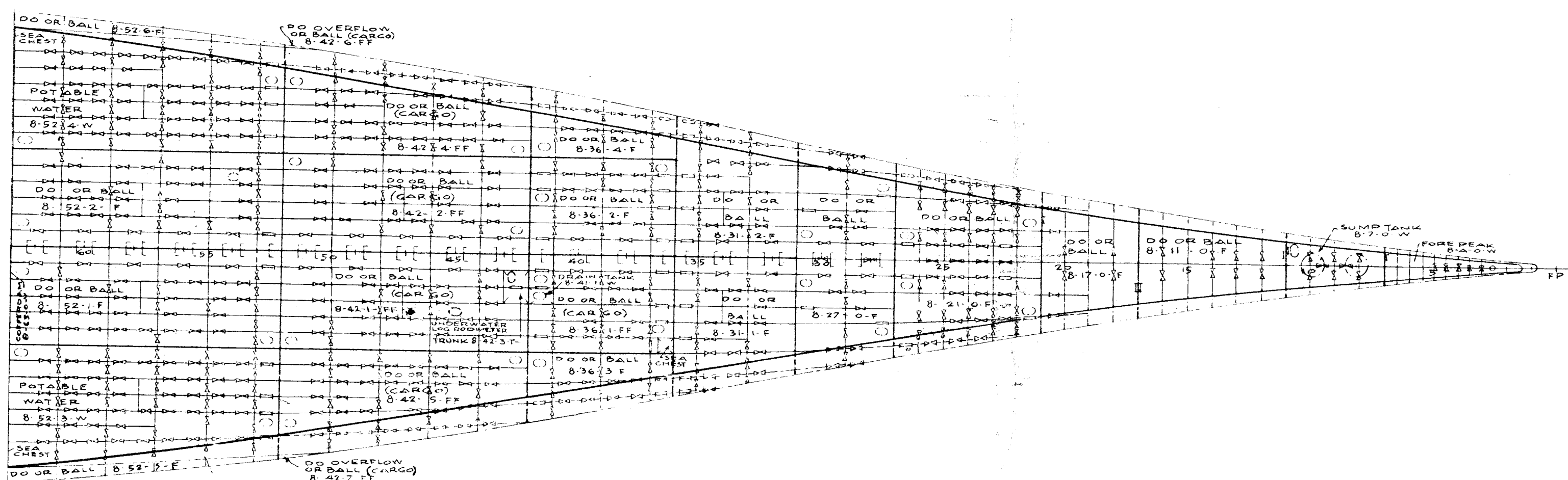
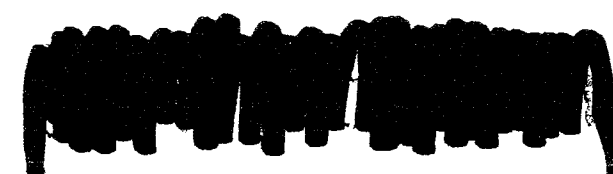
AS32-800-2105099
2ND PLATFORM
0 4 8 12
SCALE: 1/16" = 1'-0"



2ND PLATFORM

AS-32

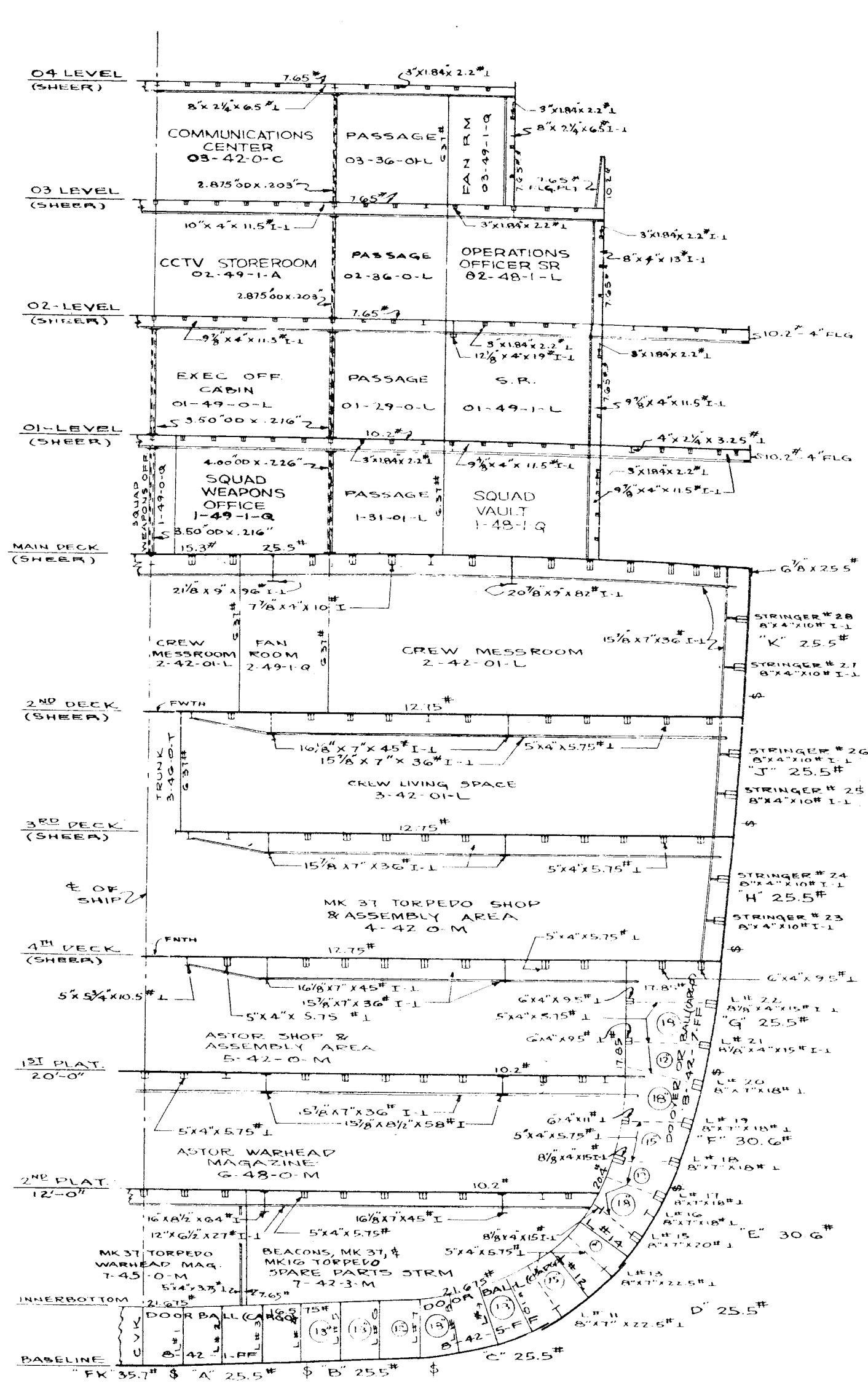




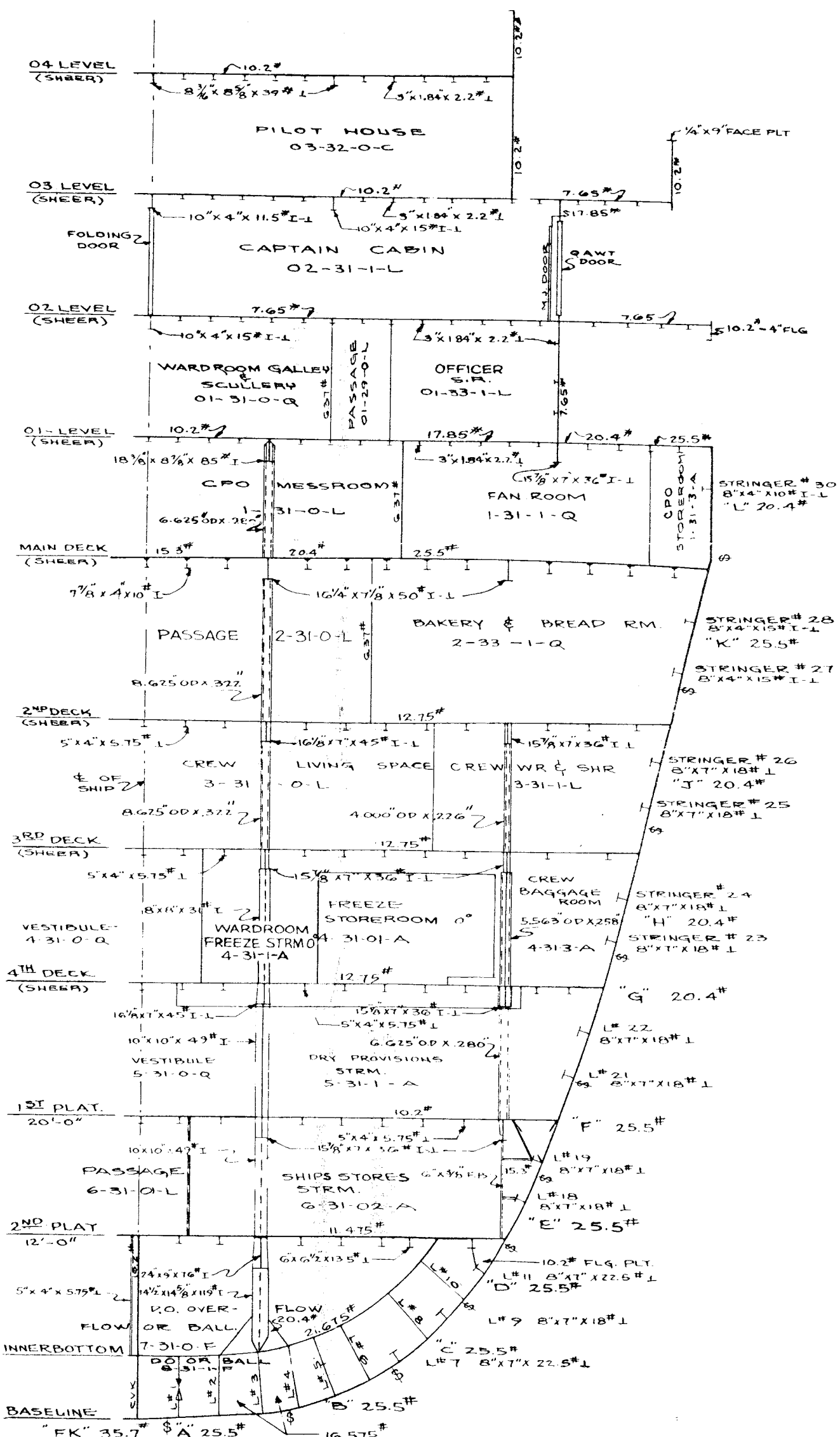
FOR
DATE OF
THIS ISSUE
SEE FRONT
COVER

AS32-800-2105099
DOUBLE BOTTOM

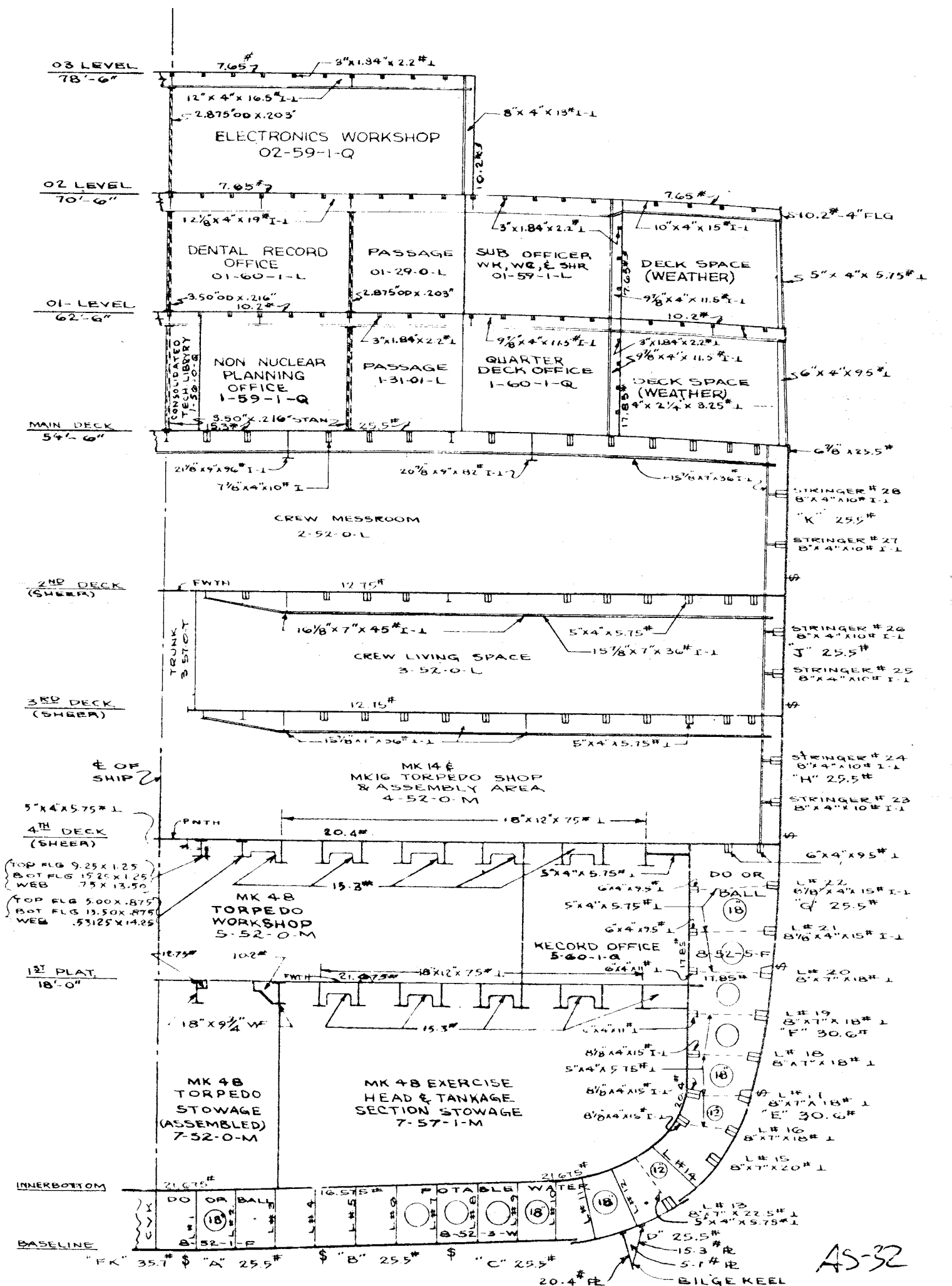
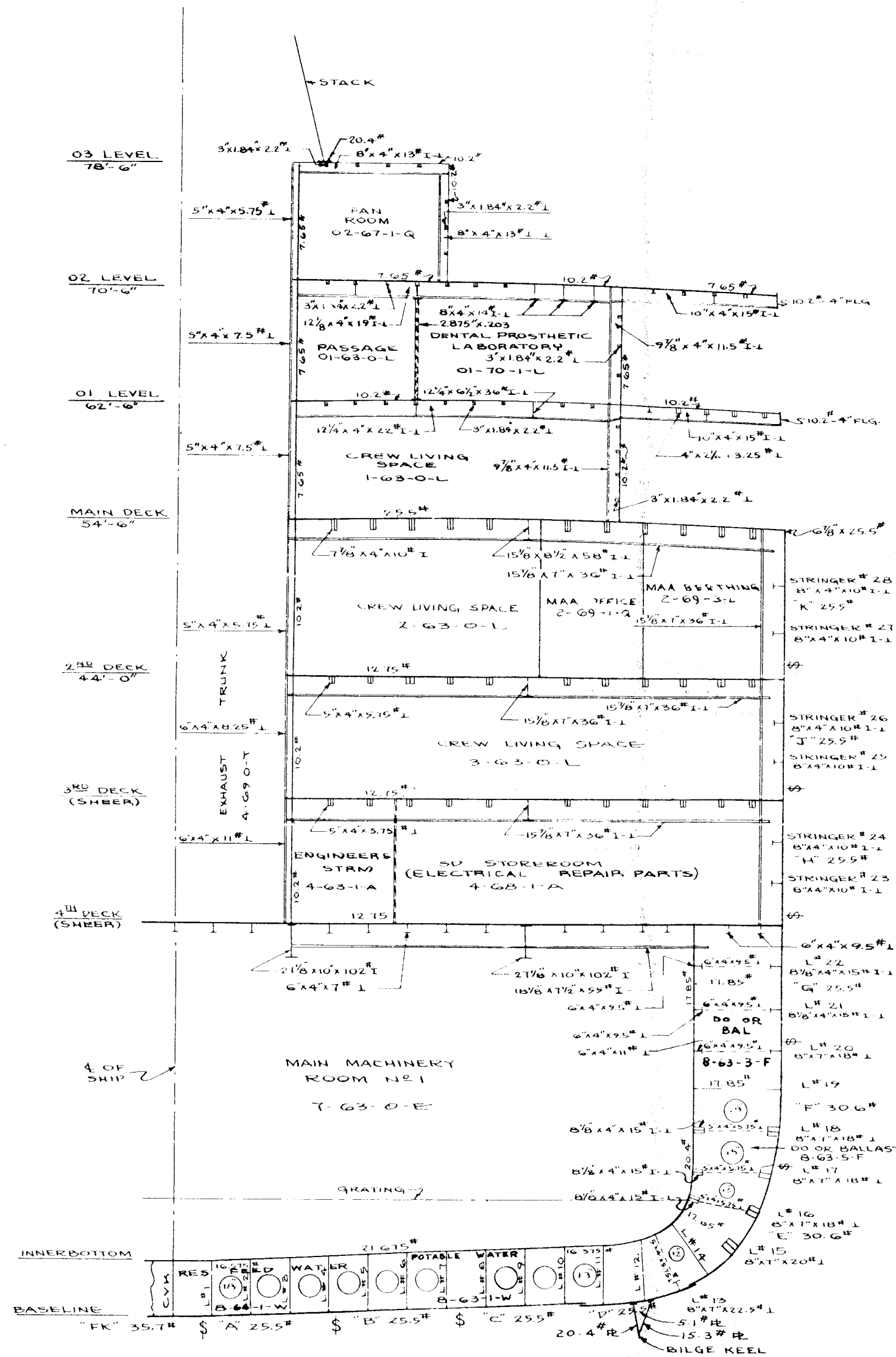
0 4 8 12
SCALE: 1/16" = 1'-0"

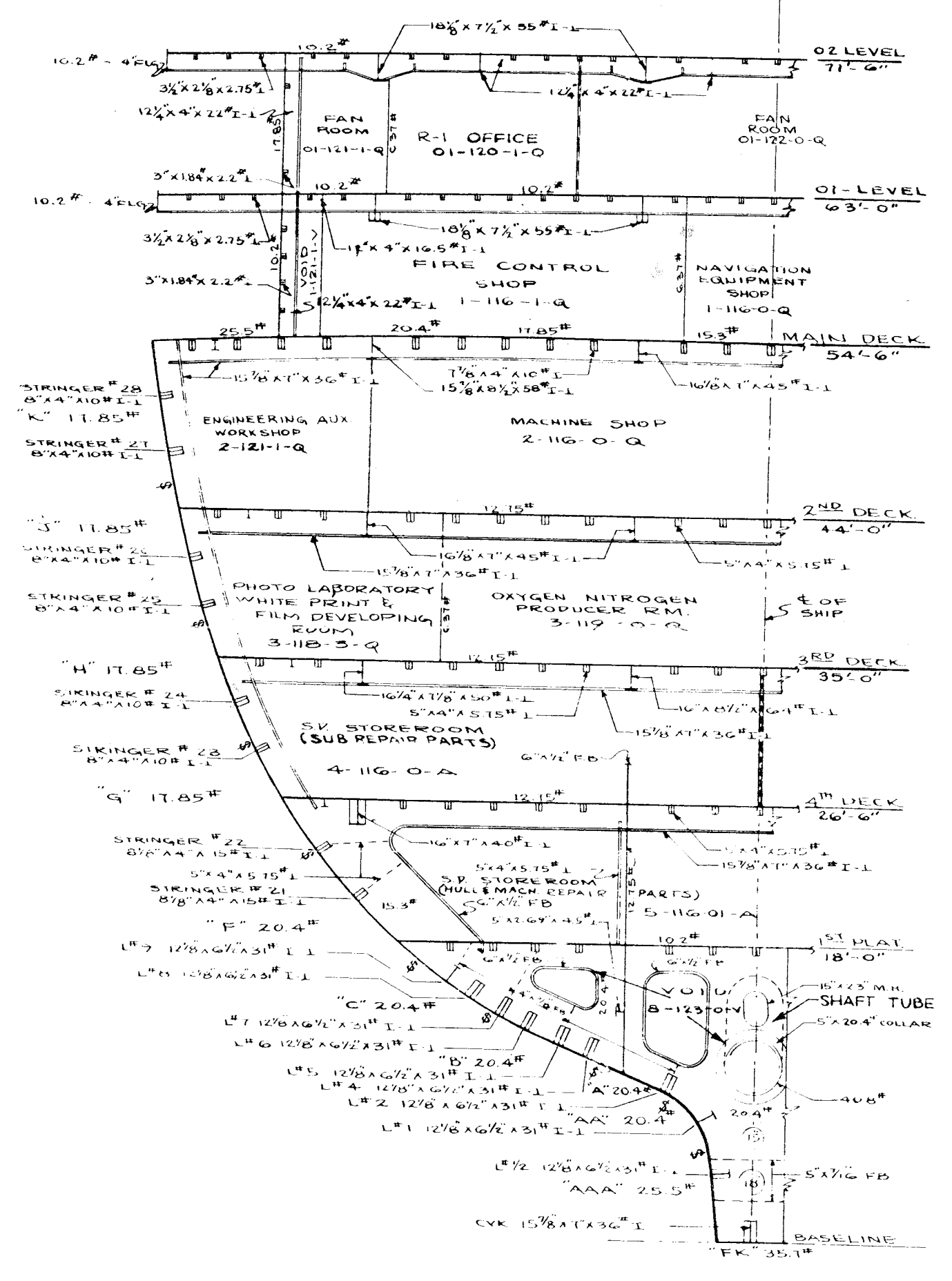
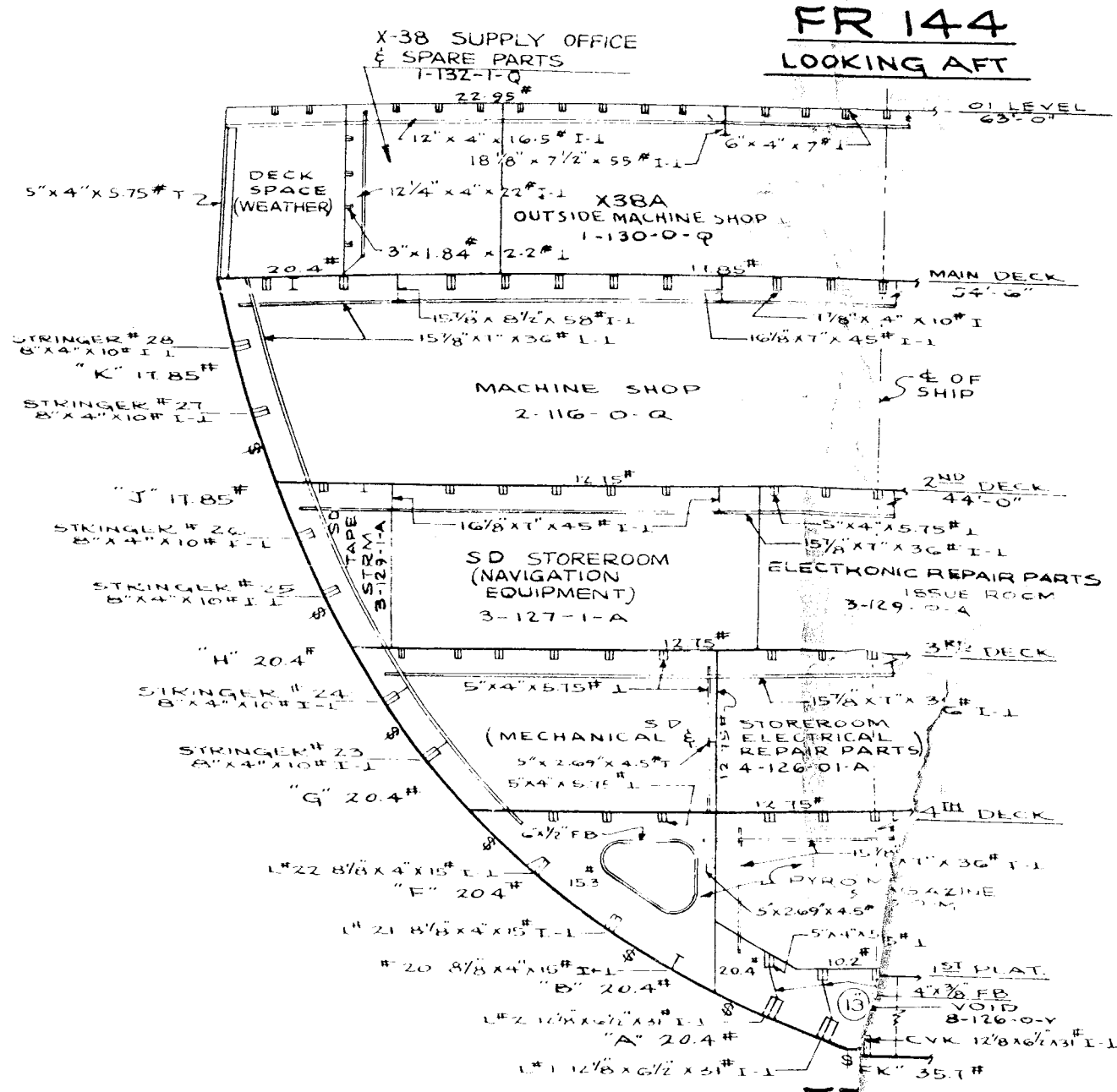
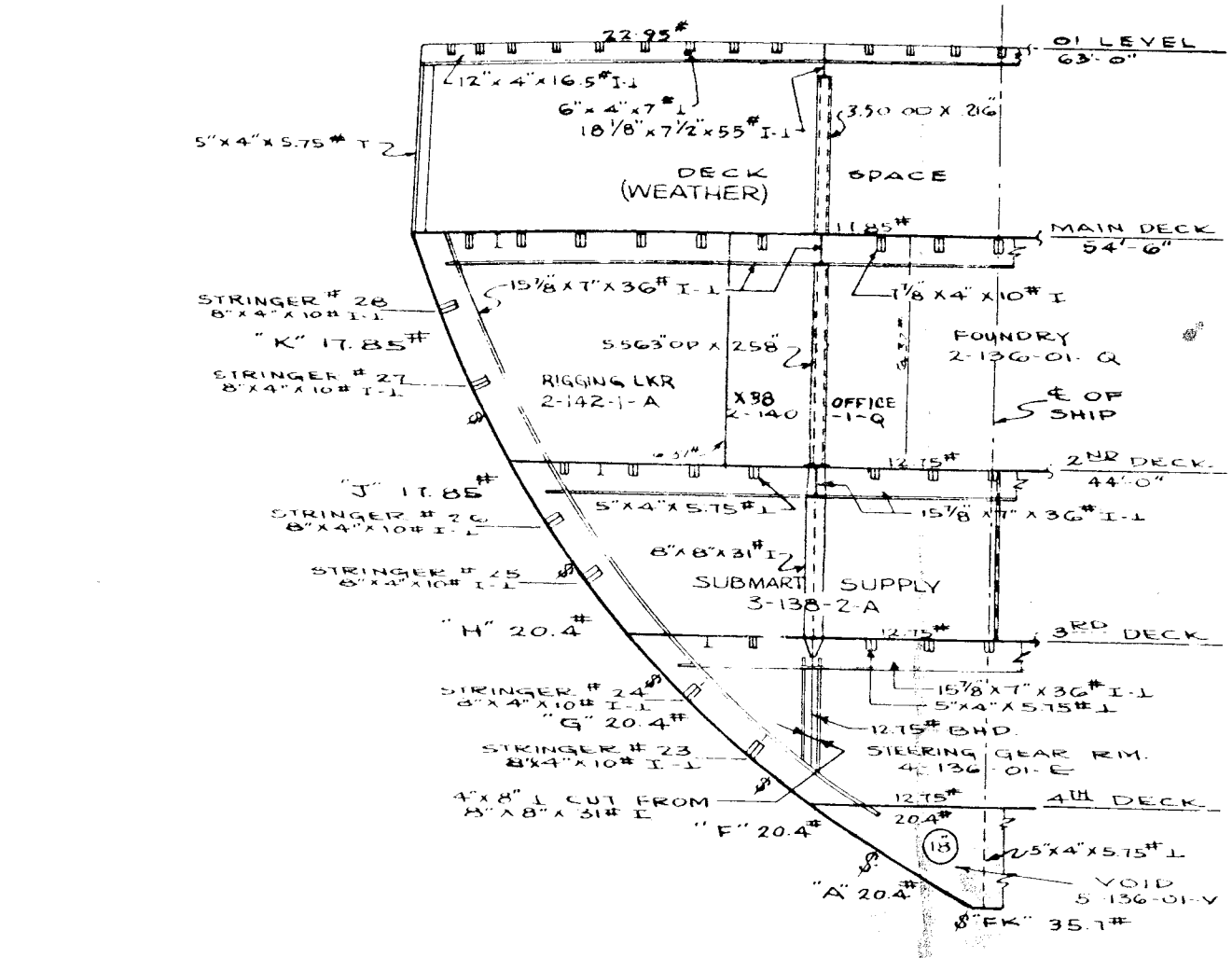


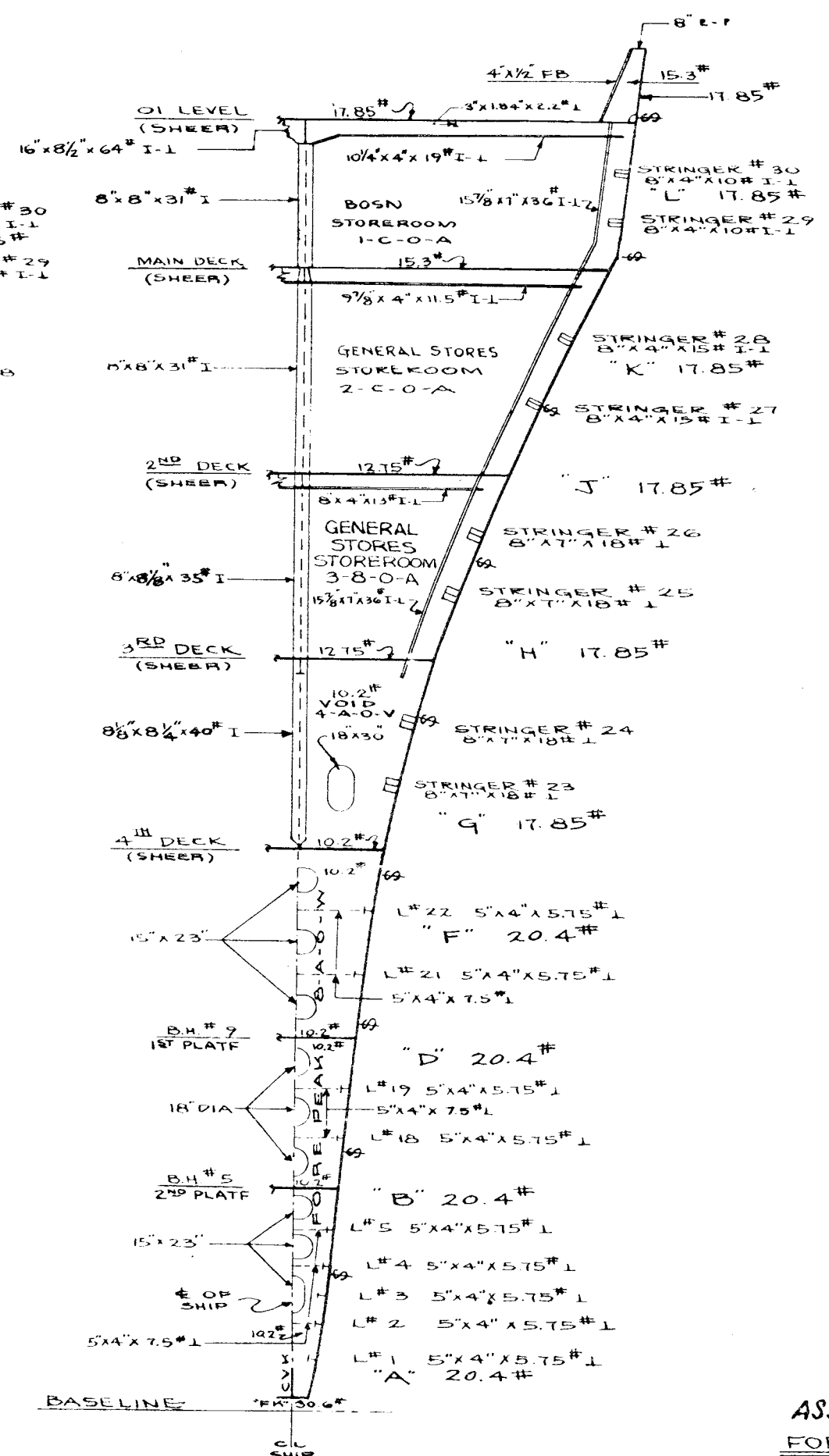
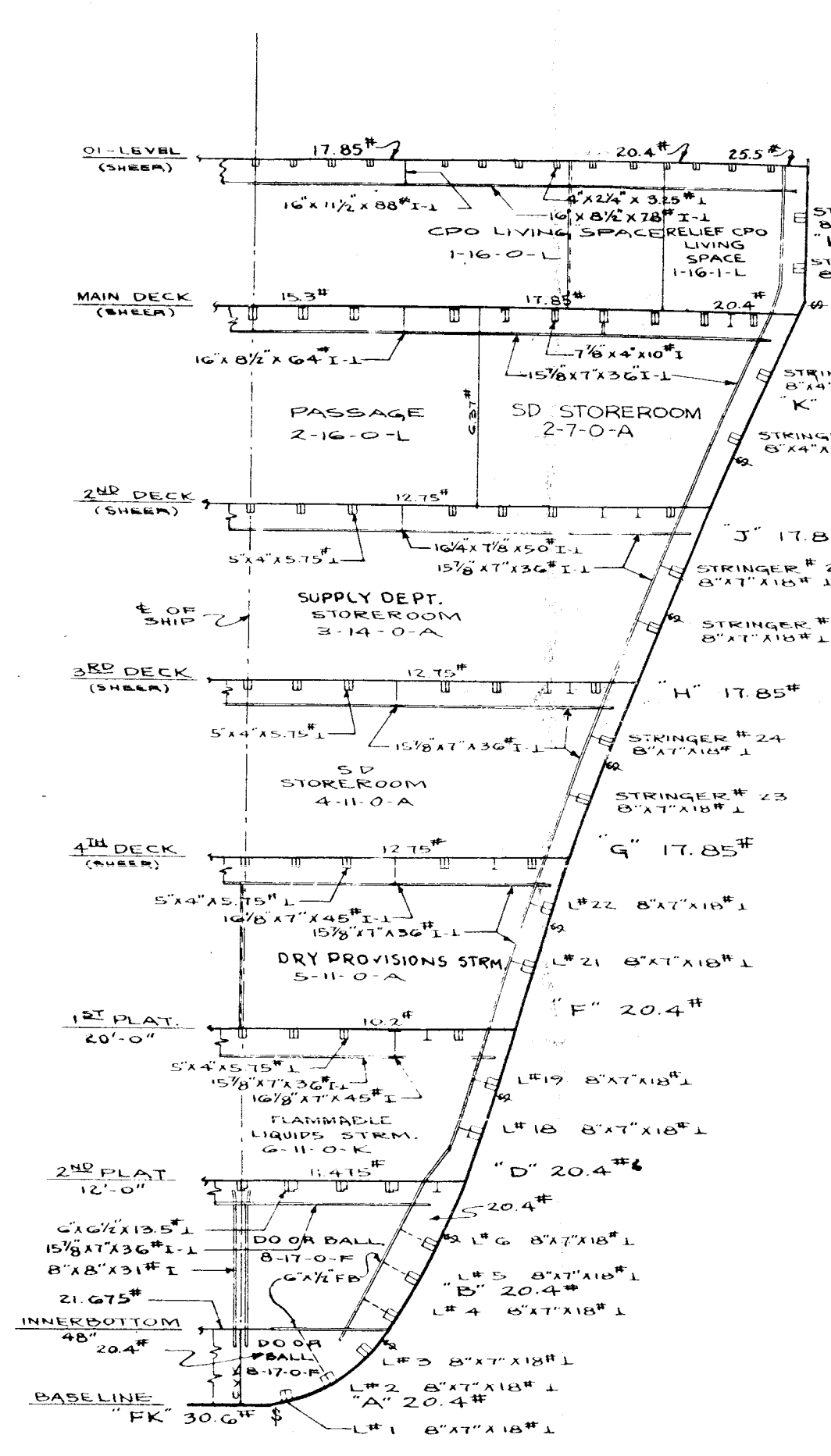
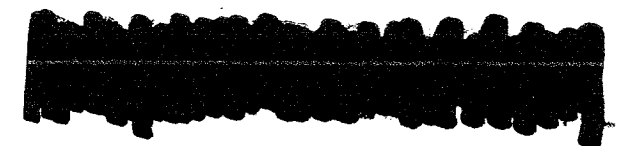
FR 50
LOOKING FWD



FR 34
LOOKING FWD

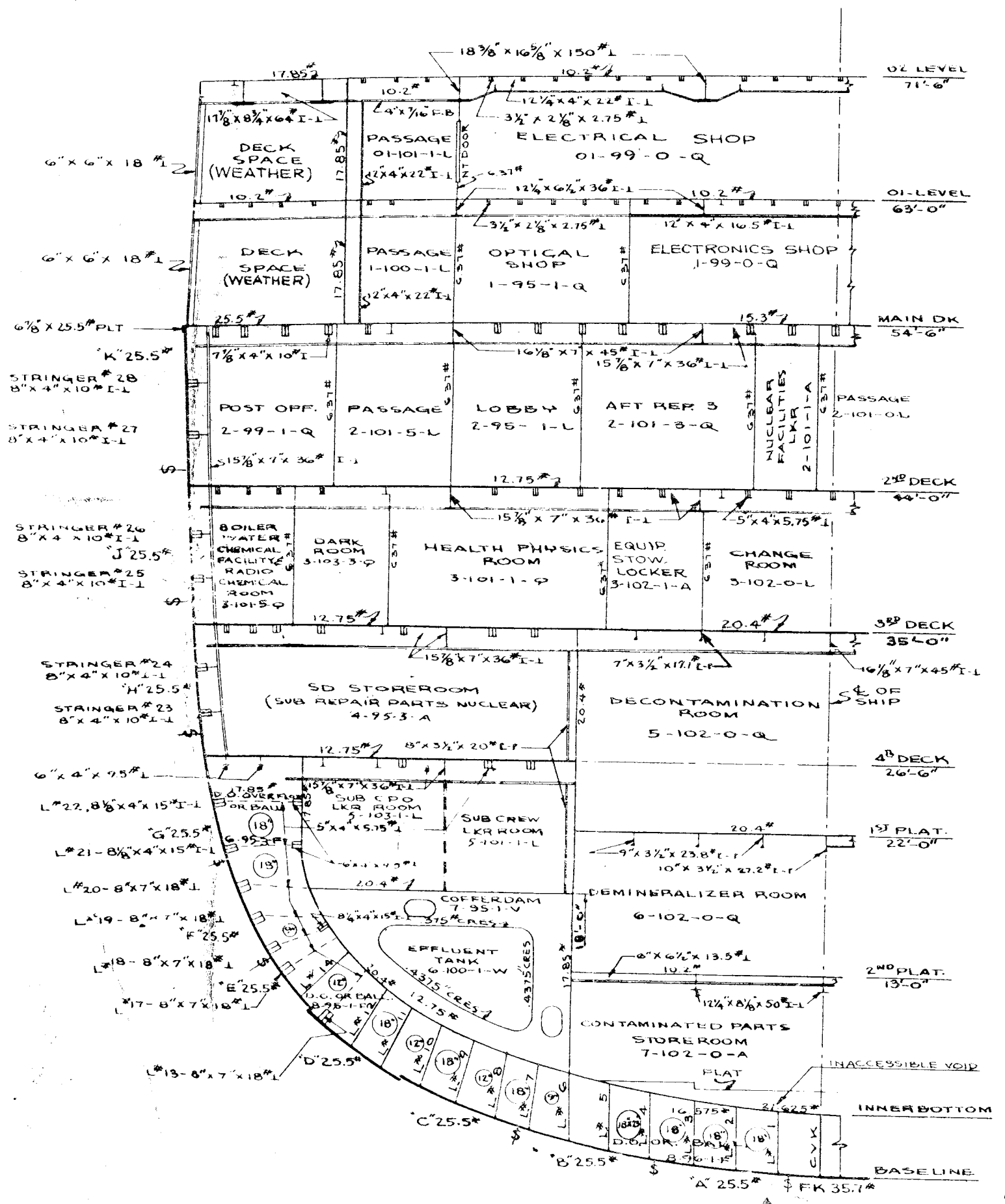
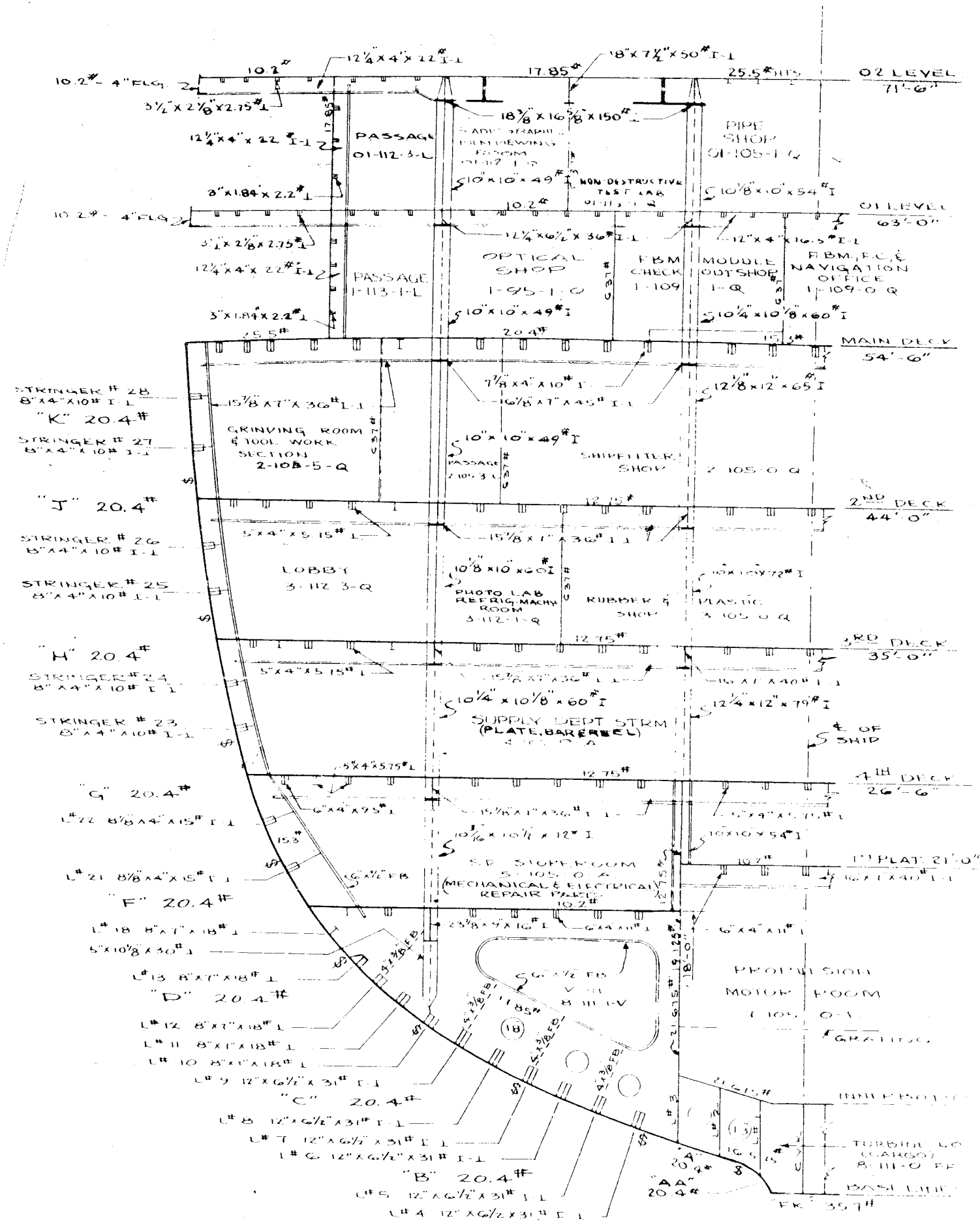






FOR DATE OF THIS ISSUE SEE FRONT COVER

AS-32
AS32-800-2105099
FORWARD SECTIONS
SCALE: 1/8" = 1'-0"



AS-32