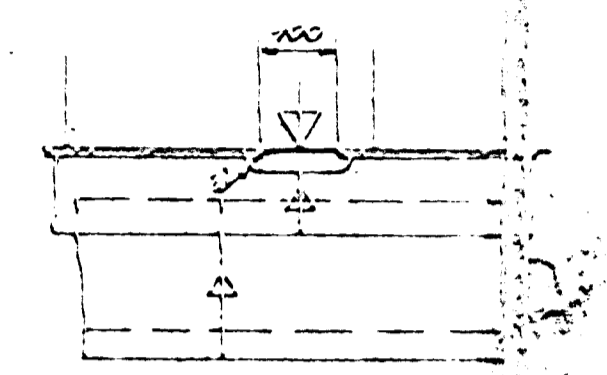
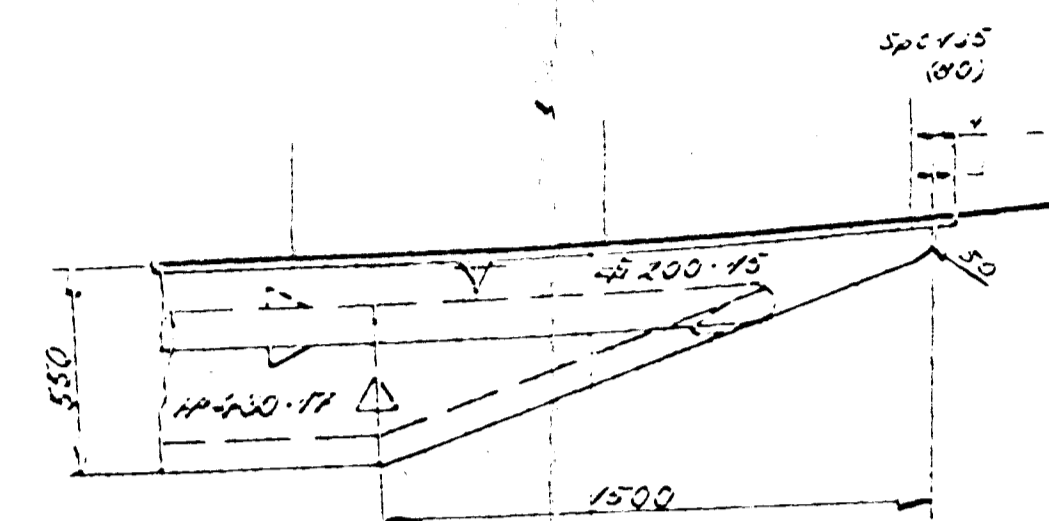


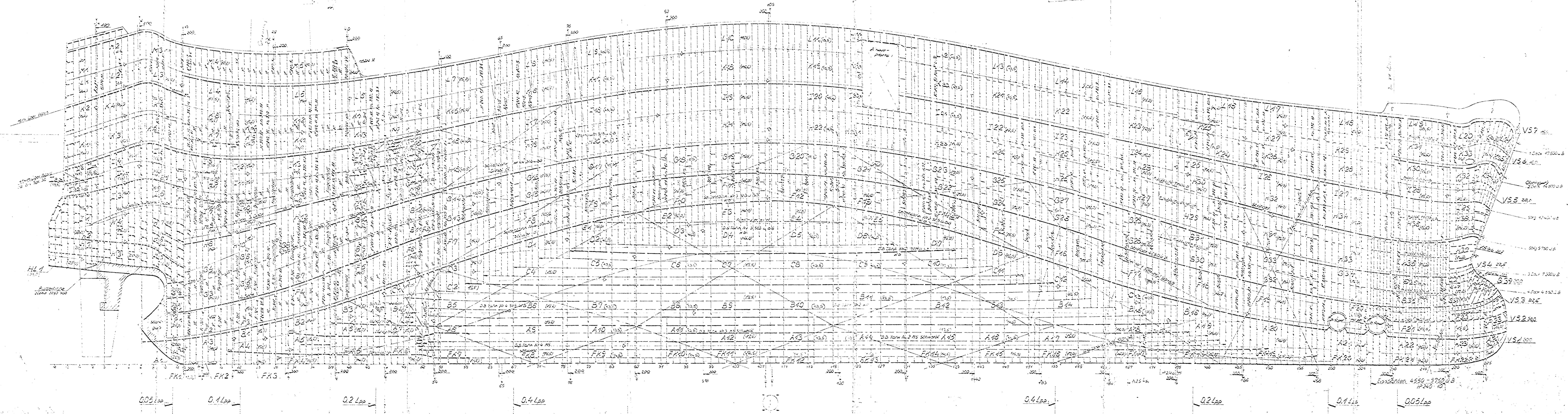
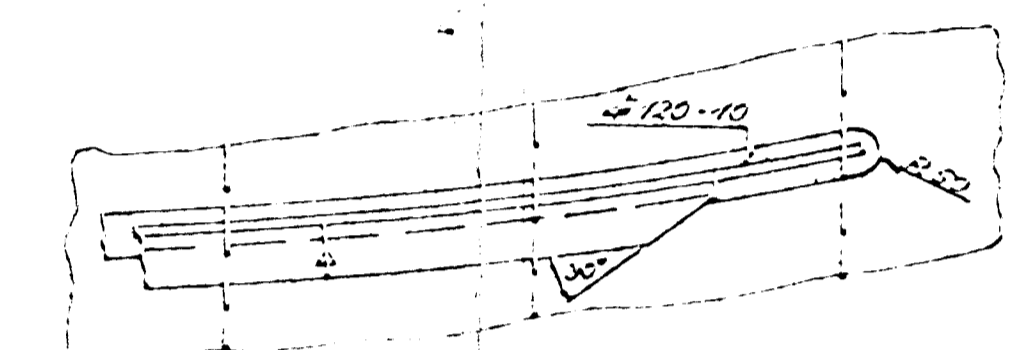
**M.V. SANTOS**  
 Roll-on/Roll-off - Ship

Length overall	= 189.00m
Length b.P.	= 170.00m
Breadth mid	= 27.00m
Depth mid 1 <sup>st</sup> Deck	= 12.60m
Draft design mid	= 8.48m
Displacement	= 23800m <sup>3</sup> (= 24500t)
Block-Coefficient	= 0.584
L.C.B.	= -1.87m

Markierung	Planquadrat	Änderung	Maßstab	Blatt
				12/113
<b>HOWALDTWERKE - DEUTSCHE WERFT</b> MASCHINEN- UND KÜSTENBAUWERKE HAMBURG UND ALEN				
<b>Lines-Plane fore</b>				
112-1-0290-0121				



Schlingerkiel H 1 20



RO-RO Schiffbau KIV-SANTOS  
 Klasse: BL 100A4 E  
 L.L.A. LPP ca 155,00 meters  
 LPP L.P.B 178,00 meters  
 Bsp. Bsp.M 27,00 meters  
 Hohl. Dp.H 17,80 meters  
 Transp. Dp.H 8,50 meters

SS. I - - 4