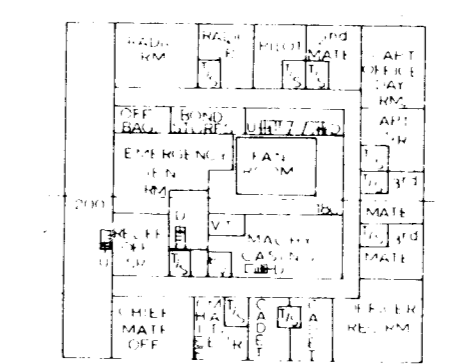
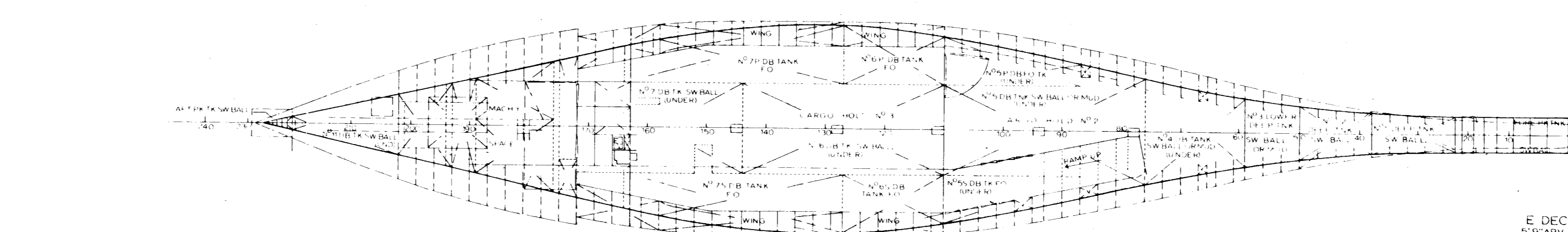
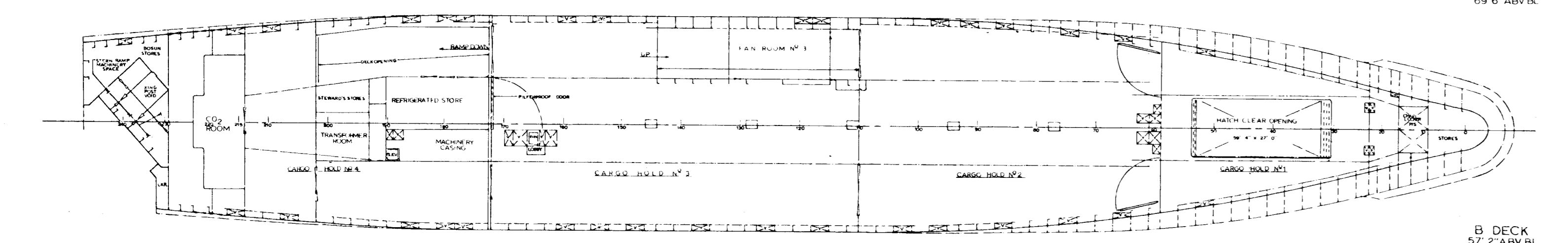
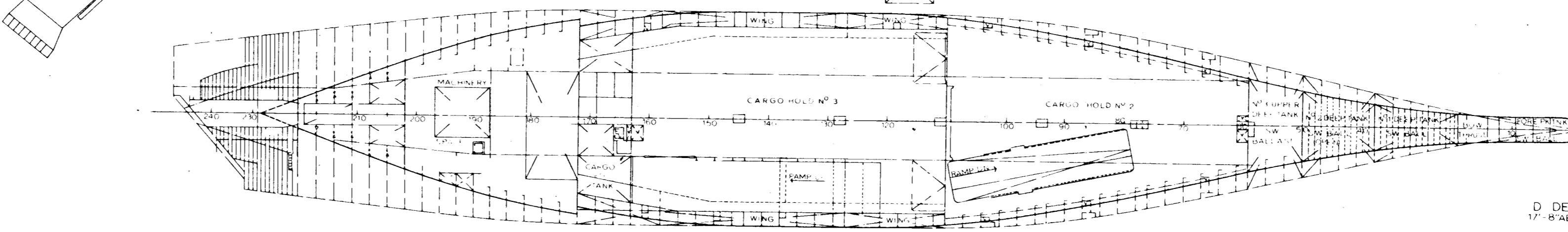
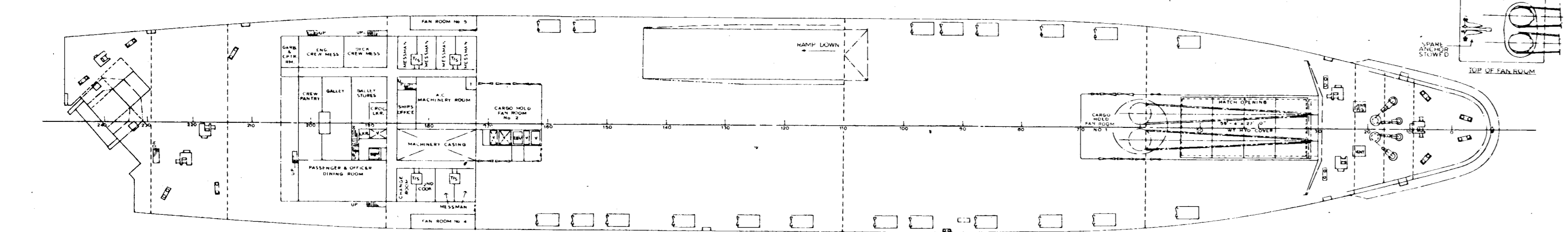
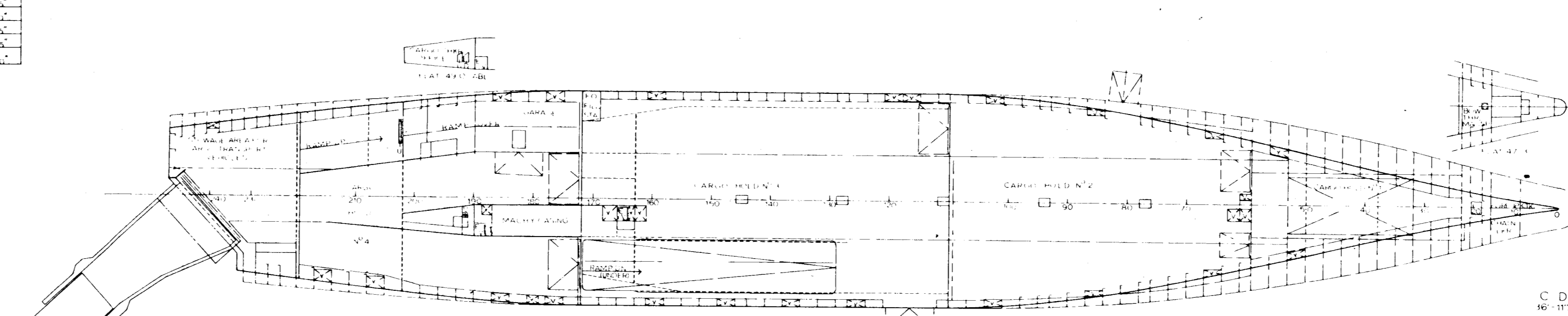
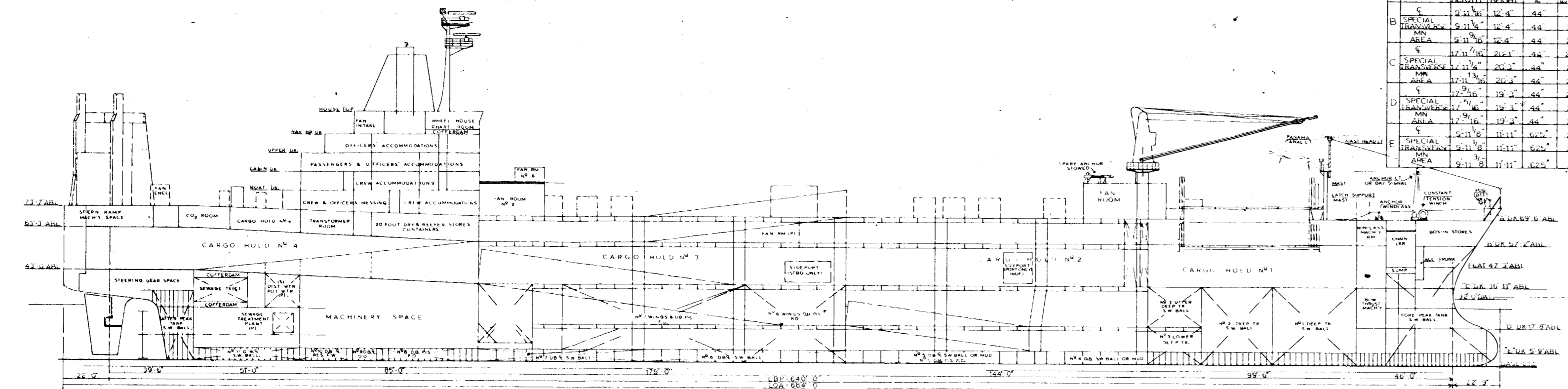
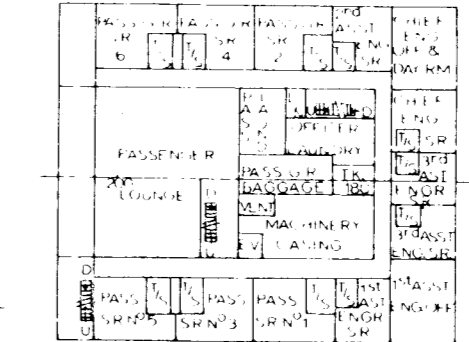


TABLE OF CLEAR DECK HEIGHTS

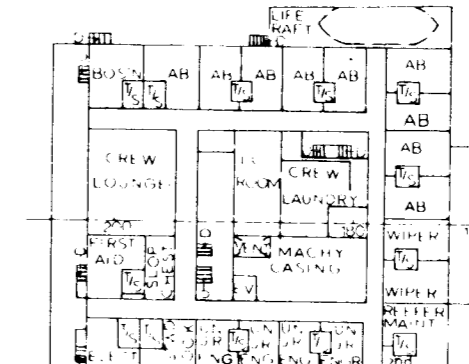
DK	AREA	CLEAR	MLD	DECK	WEB	CLANG
		HEIGHT			HEIGHT	HEIGHT
B	C	21' 6"	12' 4"	44'	27'	150'
B	C	21' 6"	12' 4"	44'	27'	132'
B	C	21' 6"	12' 4"	44'	27'	102'
C	SPECIAL	21' 6"	20' 2"	44'	26'	112'
C	SPECIAL	21' 6"	20' 2"	44'	26'	132'
C	SPECIAL	21' 6"	20' 2"	44'	26'	122'
D	SPECIAL	21' 6"	19' 2"	44'	25'	112'
D	SPECIAL	21' 6"	19' 2"	44'	25'	122'
D	SPECIAL	21' 6"	19' 2"	44'	25'	102'
E	SPECIAL	21' 6"	11' 11"	62'	22'	122'
E	SPECIAL	21' 6"	11' 11"	62'	22'	102'



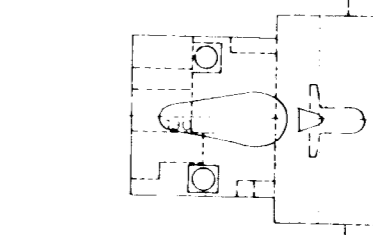
UPPER DECK
99' 6" ABV BL



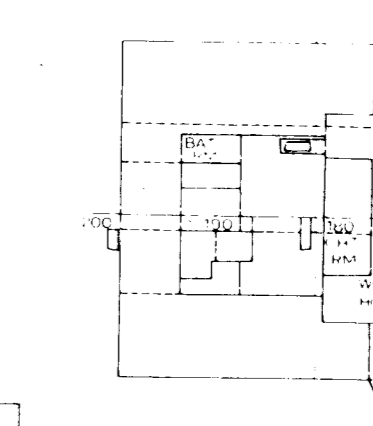
CABIN DECK
90' 6" ABV BL



BOAT DECK
81' 6" ABV BL



HOUSE TOP
119' 4" ABV BL



NAV BRIDGE DECK
105' 6" ABV BL

BRIDGE LEVEL 2' 3" ABV NAV BR DK
110' 9" ABV BL

PRINCIPAL CHARACTERISTICS

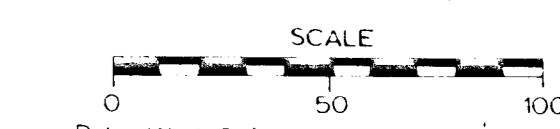
Length Overall	684'-0"
Length Perpendicular	640'-0"
Beam, Molded	69'-6"
Depth to "A" Deck	69'-6"
Depth to "B" Deck (Bulkhead Deck) MLD	57'-2"
Draft, Design, Molded	32'-0"
Draft, Scantling	34'-0"
Lightship	14,776
Liquid Cargo	28,330 cu ft
Fuel Oil	6,251 LT
Salt Water Ballast	6,749 LT
Fresh Water	251 LT
Total Deadweight At Design Draft	18,969 LT
Displacement, Molded, At Design Draft	33,640 LT
Displacement, Total At Design Draft	33,765 LT
Cargo Volume, Bale, Cu Ft Holds	1,956,382
Area, Sq Ft (including "A" Deck Ramps)	153,360
Basic Manning	42
Crew Accommodations (incl Spares)	41
Shaft Horsepower Max, Cont.	37,000
Speed, Knots	23
Propeller (Skewed) Blades	22'-0"
Propelling Machinery, Cross Compound	
Double Reduction, Geared Turbine	

CAPE INSCRIPTION
CAPE ISABEL
JUPITER

OFFICE OF SHIP CONSTRUCTION
MARITIME ADMINISTRATION
U.S. DEPARTMENT OF COMMERCE

STATES STEAMSHIP COMPANY
SINGLE SCREW CARGO VESSEL

MA DESIGN C7-S-95a



Date JAN 1978 Approved By _____
Drawn KAREN QUIST SEAMAN

MA PLAN NO C7-S-95a-59-0-1