

CAPE "I"

John Down

RRF SHIPS
LOADING CHARACTERISTICS PAMPHLET

6/2 info
- Note Tie down locations
are covered
(initials)

SHIP NAME CAPE ISABEL
MA HULL NO. 281
MA DESIGN C7-S-95a

PREPARED BY
DIVISION OF NAVAL ARCHITECTURE
MARITIME ADMINISTRATION
DATE: Jan 1988

CHANGE NO.	DATE	MADE BY

TABLE OF CONTENTS

	<u>Page No.</u>
TITLE SHEET.....	1
TABLE OF CONTENTS.....	2-3
SHIP CHARACTERISTICS.....	4
CARGO HANDLING FACILITIES.....	5
COMMUNICATION & NAVIGATION EQUIPMENT.....	6
LIST OF LIFE SAVING EQUIPMENT.....	7
ACCOMMODATIONS SUITABLE FOR TROOPS.....	7
ACCOMMODATIONS SUITABLE FOR TROOPS (DRAWINGS):	
CABIN DECK.....	8
UPPER DECK.....	9
LIST OF SHIP'S REFRIGERATED STOREROOMS.....	10
CARGO SPACE CHART.....	11
LIST OF SPACES SUITABLE FOR AMMO.....	12
LIST OF TANKS SUITABLE FOR FRESH WATER.....	12
PROFILE OF CARGO SPACES.....	13
SKETCHES:	
A DECK FR 23-FR 70.....	14
A DECK FR 70-FR 110.....	15
A DECK FR 110-FR 114.....	16
A DECK FR 144-FR 172.....	17
A DECK AFT OF FR 202.....	18
B DECK CARGO HOLD NO. 1.....	19
B DECK CARGO HOLD NO. 2.....	20
B DECK CARGO HOLD NO. 3, FWD OF FR 146.....	21
B DECK CARGO HOLD NO. 3, AFT OF FR 146.....	22
B DECK CARGO HOLD NO. 4.....	23
C DECK CARGO HOLD NO. 1.....	24
C DECK CARGO HOLD NO. 2.....	25
C DECK CARGO HOLD NO. 3, FWD OF FR 146.....	26
C DECK CARGO HOLD NO. 3, AFT OF FR 146.....	27
C DECK CARGO HOLD NO. 4, FWD OF FR 220.....	28
C DECK CARGO HOLD NO. 4, AFT OF FR 220.....	29

TABLE OF CONTENTS

Page No.

SKETCHES: (Continued)

D DECK CARGO HOLD NO. 2.....	30
D DECK CARGO HOLD NO. 3, FWD OF FR 146.....	31
D DECK CARGO HOLD NO. 3, AFT OF FR 146.....	32
E DECK CARGO HOLD NO. 2.....	33
E DECK CARGO HOLD NO. 3.....	34

SHIP NAMES	CAPE JUPITER
DESIGN	C7-S-95a
MA HULLS NOS.	280

SHIPS CHARACTERISTICS

LENGTH OVERALL.....	684' - 9"
LENGTH BETWEEN PERPENDICULARS.....	640' - 0"
BEAM, MOLDED.....	102' - 0"
DEPTH MOLDED TO "A" DECK AT SIDE.....	69' - 6"
MAST HEIGHT ABV. B.L.....	170' - 11"
DRAFT, MAX.....	34' - 0"
DRAFT, DESIGN.....	32' - 1"
DRAFT, LIGHT SHIP.....	16' - 11"
DISPLACEMENT, MAX.....	36,475 L.T.
DISPLACEMENT, DESIGN.....	33,900 L.T.
TOTAL DWT, MAX.	21,698 L.T.
TOTAL DWT, DESIGN.....	19,123 L.T.
LIGHTSHIP.....	14,777 L.T.
S.W. BALLAST.....	6,749 L.T.
FUEL.....	3,465 L.T.
GROSS TONS.....	13,156 L.T.
NET TONS.....	7,603 L.T.
DRY CARGO.....	1,943,683 CU. FT.
DECK AREA.....	153,360 SQ.FT.
LIQUID CARGO.....	28,333 CU. FT.
SHIP ACCOMMODATIONS, OFFICERS & CREW.....	43 PERS.
PASSENGER ACCOMMODATIONS.....	12 PERS.
TOTAL BERTHING ACCOMMODATIONS.....	55 PERS.
HORSEPOWER ABS, MAX.....	37,000
HORSEPOWER, NORMAL SHP.....	29,600
SPEED, SERVICE, KTS.....	23.0 KTS.
RANGE.....	12,600 N. MILES

CARGO HANDLING FACILITIES

LOCATION

EQUIPMENT

HATCH NO. 1

FWD.Twin 15 Ton Cranes

COMMUNICATION & NAVIGATION EQUIPMENT

Note: This information is unavailable at time of printing (January 1988).

LIFE SAVING EQUIPMENT

1 - Motor propelled 55 person life boat
1 - Hand propelled 55 person life boat
24 - Life buoys
2 - 30 person float free life rafts
61 - Personal Floatation Devices

ACCOMMODATIONS

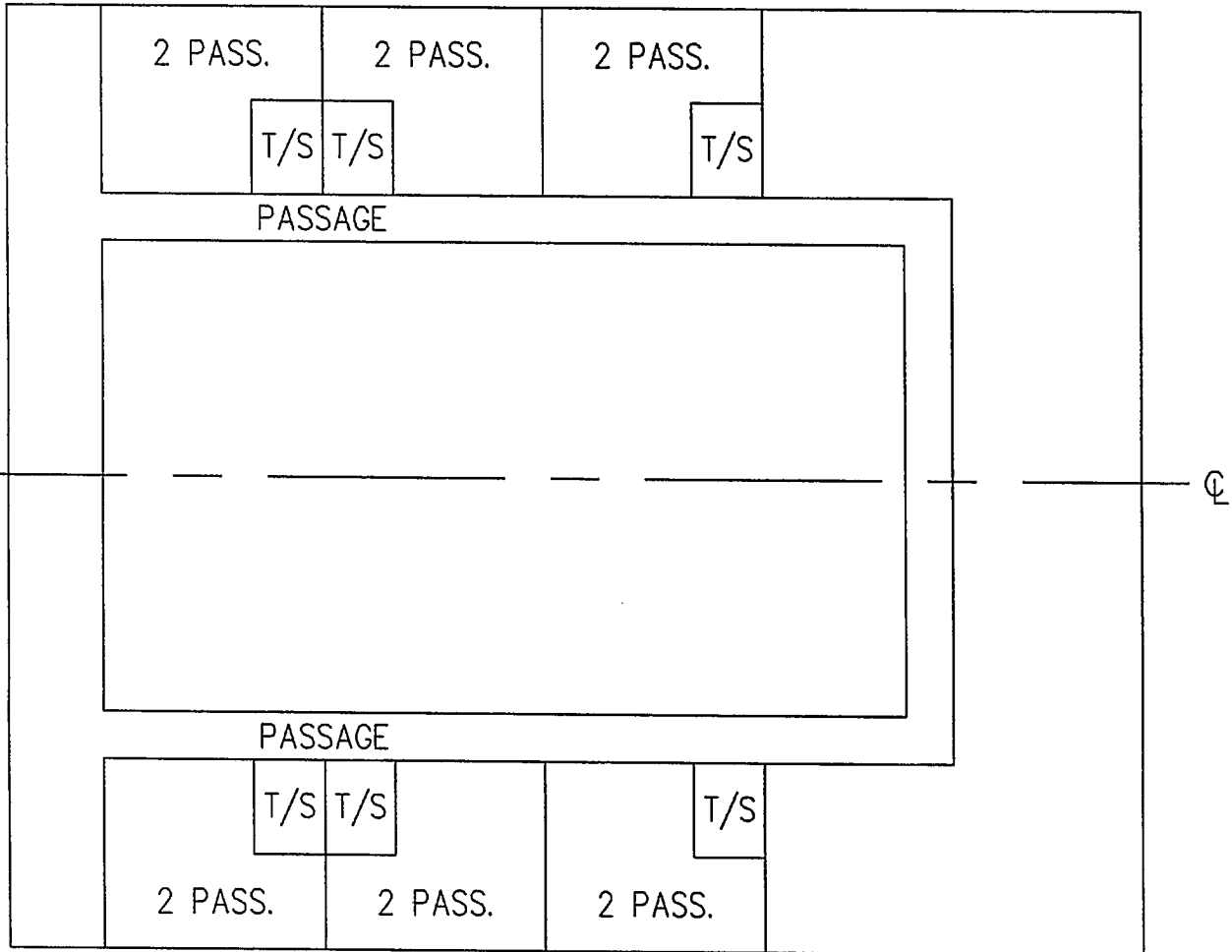
OFFICERS & CREW INCLUD. SPARES	41
CADETS	2
PASSENGERS	<u>12</u>
TOTAL	55

ACCOMMODATIONS AVAILABLE FOR TROOPS

PASSENGER SPACE	12
CADETS	2
RELIEF OFFICER	2
PILOT	<u>1</u>
TOTAL:	17

CABIN DECK

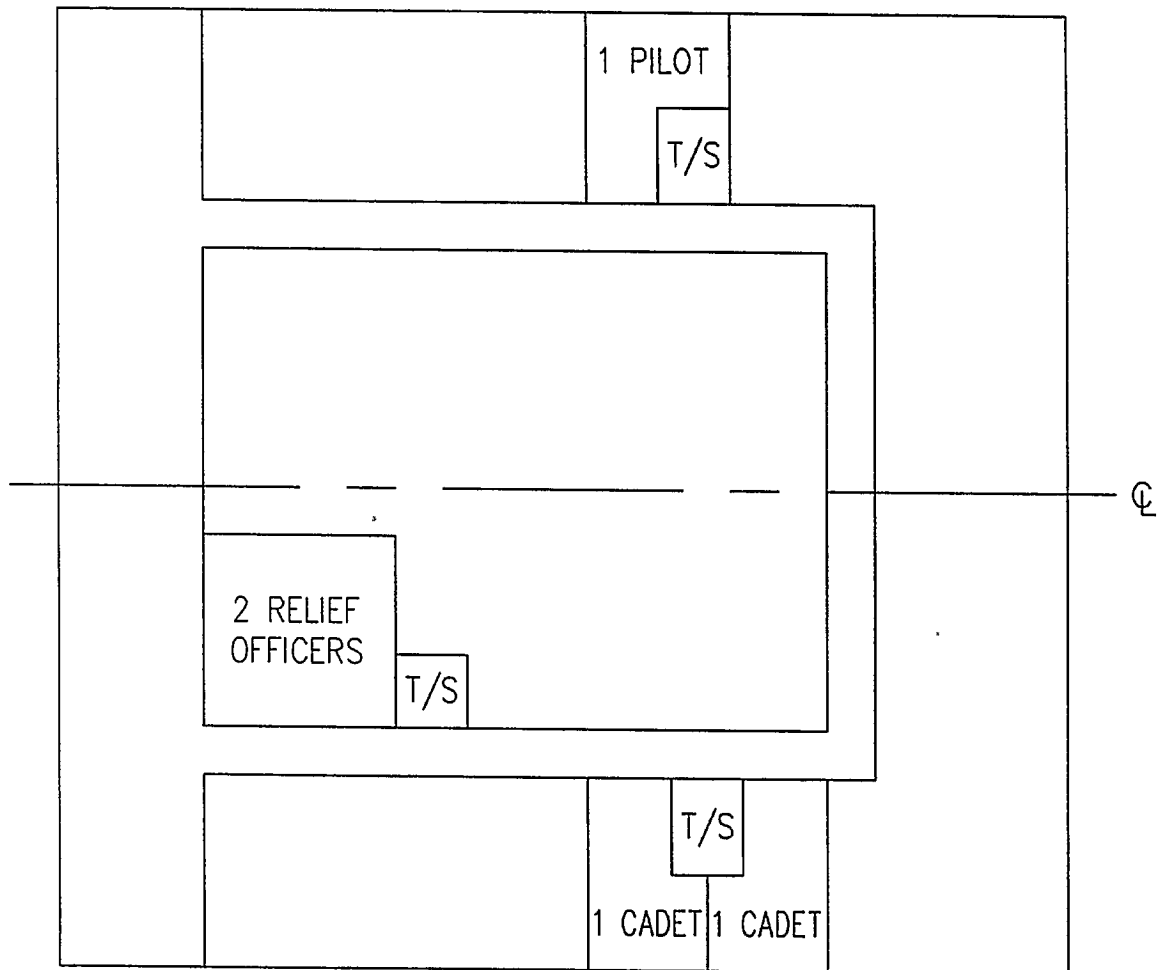
SCALE: 1/16" = 1'-0"
PASSENGER'S BERTHING AND SANITARY
FACILITIES SUITABLE FOR MILITARY PERSONNEL



FR 172

UPPER DECK

SCALE: 1/16" = 1'-0"
CADETS', PILOTS', AND RELIEF OFFICERS'
BERTHING AND SANITARY FACILITIES
SUITABLE FOR MILITARY PERSONNEL



FR 172

REFRIGERATED STOREROOMS

<u>COMPARTMENT</u>	<u>DECK</u>	<u>FRAMES</u>	<u>NET CU. FT.</u>
FREEZE*	B DECK	FR 184-187	867 CU.FT.
FREEZE*	B DECK	FR 181-184	867 CU.FT.
CHILL*	B DECK	FR 178-181	867 CU.FT.

* These stores are in containers.

CARGO SPACE CHART

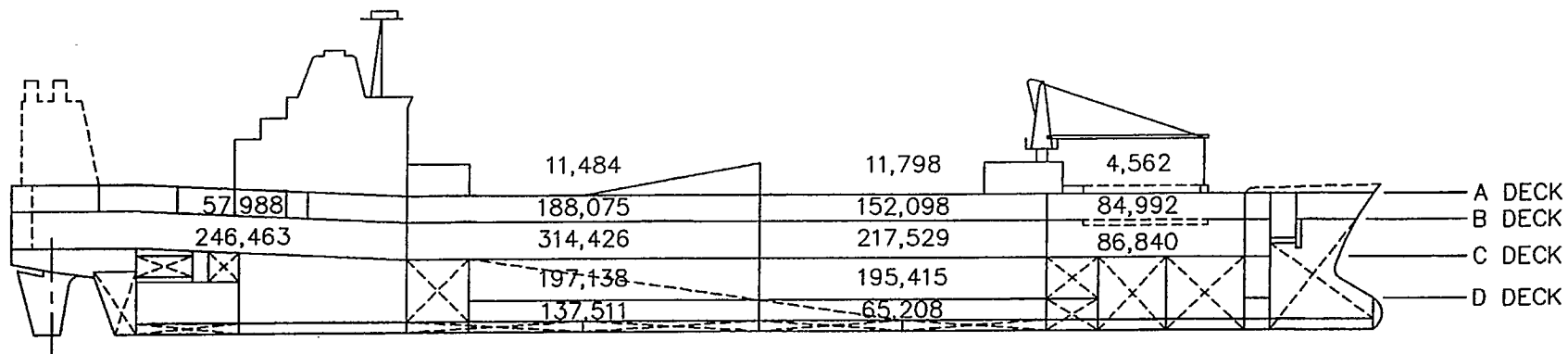
DECK	HOLD	HATCH OPENING	MINIMUM VERTICAL CLEARANCE	CLEARANCE IN HATCH SQUARE	CLEARANCE THRU DOORS	DOORS	BALE VOLUME, CUBIC FEET	DECK AREA SQUARE FEET
A	Fr 33- 35	-	-	-	-	-	-	4,562
	Fr 55-110	-	-	-	-	-	-	11,798
	Fr 110-172	-	-	-	-	-	-	11,484
B	1	59'-4"x 27'-0"	9' - 11"	17' - 3"	20'-6"x 9'-6"	G.T, P/S	84,992	5,478
	2	-	9' - 11"	-	22'-0"x 10'-0"	Opening P/S	152,098	12,642
	3	-	9' - 11"	-	24'-0"x 11'-0"	W.T., Top of Remp	188,075	16,481
	4	-	9' - 11"	-	16'-0"x 10'-0"	Opening	57,988	5,098
C	1	59'-4" x 27'-0"	17' - 11"	17' - 11"	20'-3"x 15'-0"	W.T., P	86,840	3,112
	2	-	17' - 11"	-	12'-0"x 15'-0"	W.T., S	217,529	11,260
	3	-	17' - 11"	-	24'-0"x 15'-0"	W.T., P	314,426	16,265
	4	-	17' - 11"	-	14'-0"x 15'-0"	Sideport, P	246,463	12,483
D	2	-	17' - 0"	-	24'-0"x 15'-0"	W.T., P/S	65,208	4,918
	3	-	17' - 0"	-	-	-	197,138	14,087
E	2	-	9' - 11"	-	-	-	65,208	4,918
	3	-	9' - 11"	-	20'-6"x 9'-6"	W.T.,P	137,511	13,306

SPACES SUITABLE FOR AMMO

No spaces are suitable for ammunition.

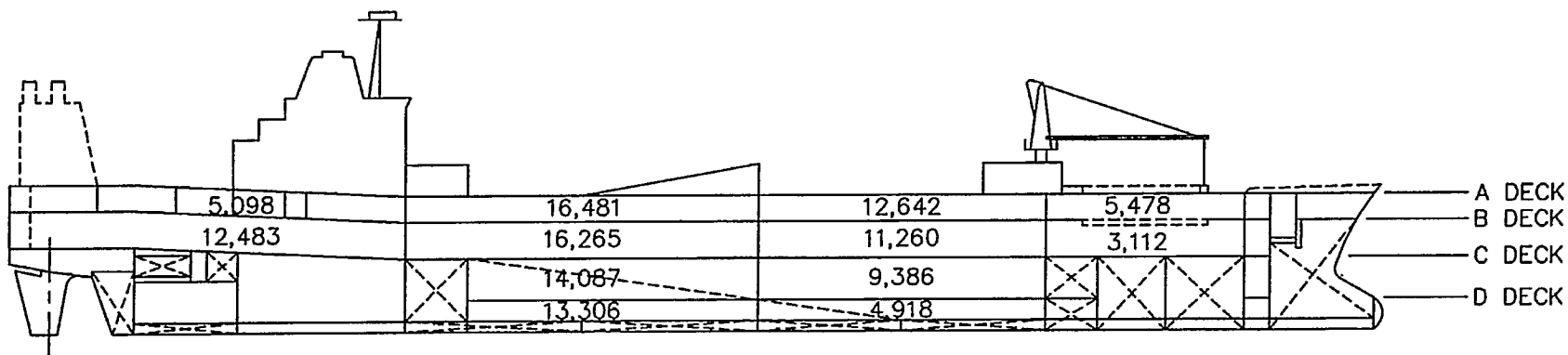
TANKS SUITABLE FOR FRESH WATER

TANK	FRAMES	TONS
POTABLE WATER TANK - P	202 - 208	82.1
DISTILLED WATER TANK - S	202 - 208	73.7
FOREPEAK TANK	- 16	648.9
NO. 1 DEEP TANK c	23 - 38	705.0
NO. 2 DEEP TANK c	38 - 50	960.1
NO. 3 LOWER DEEP TANK c	50 - 59	379.3
NO. 3 UPPER DEEP TANK	50 - 59	<u>626.8</u>
TOTAL		3475.9



BALE CUBIC IN CUBIC FEET

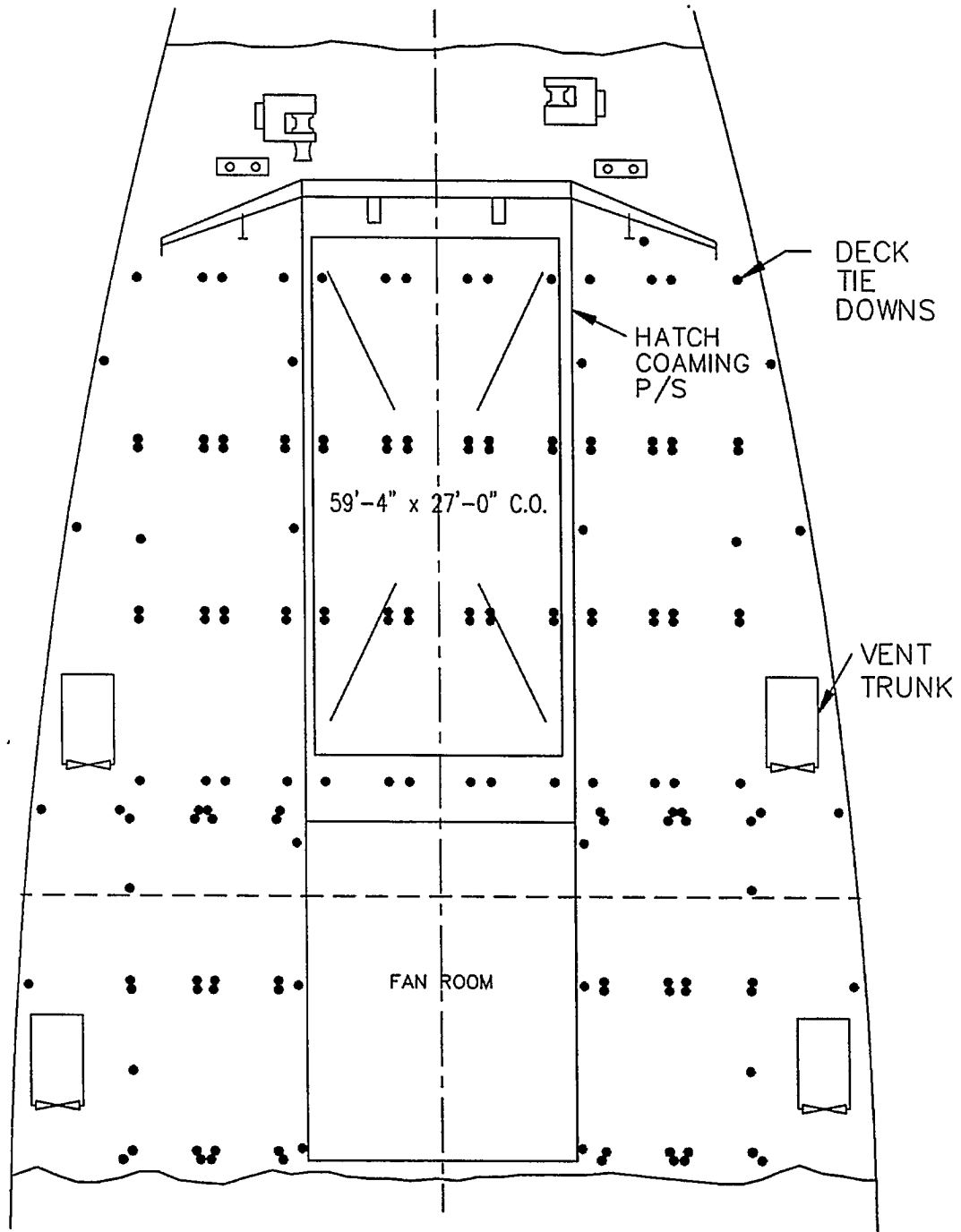
13



DECK AREAS IN SQUARE FEET

PROFILE CUTAWAY OF CARGO SPACES

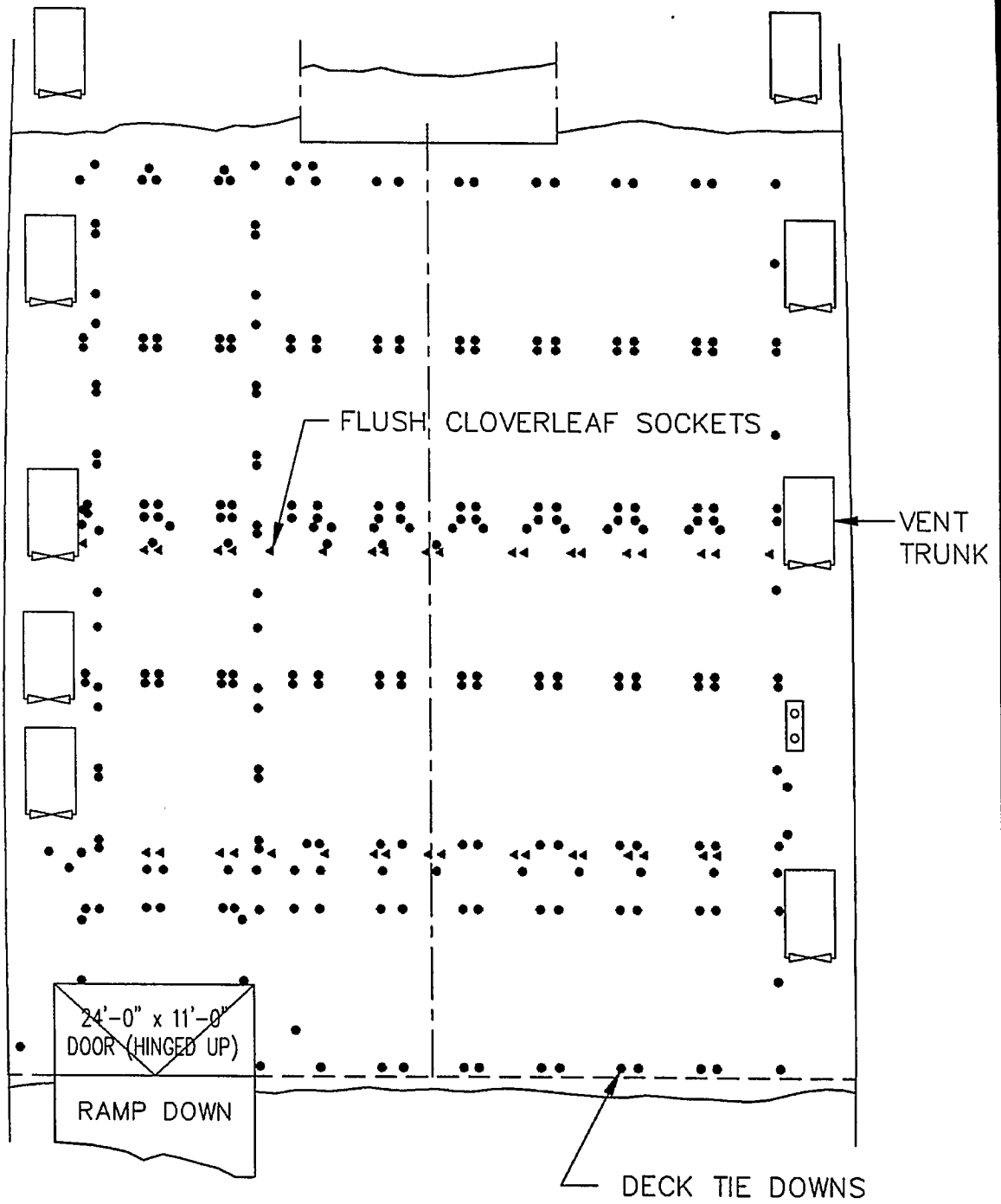
A DECK
FR 23 - FR 70
SCALE: 1/20" = 1'-0"



A DECK

FR 70 - FR 110

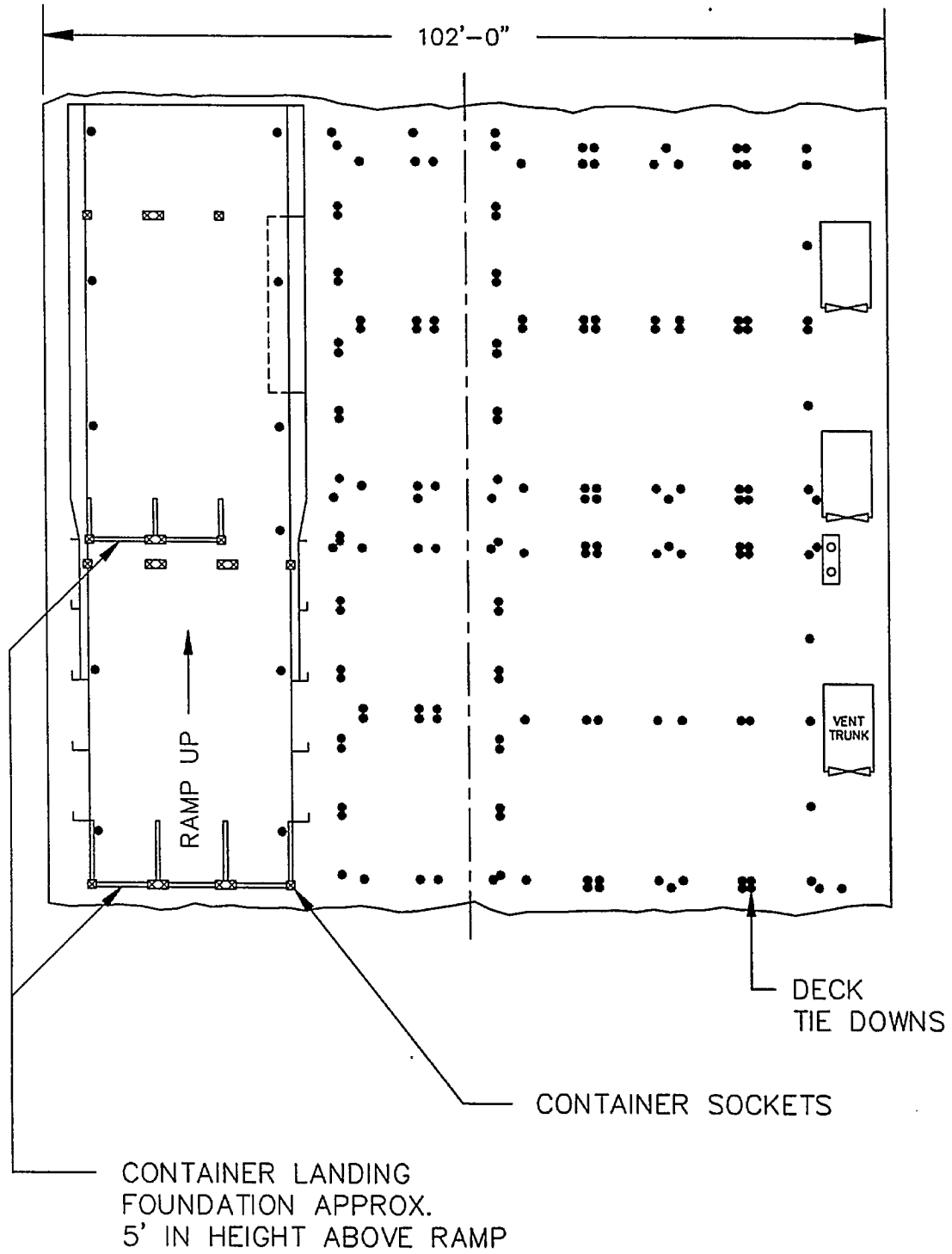
SCALE: 1/20" = 1'-0"



A DECK

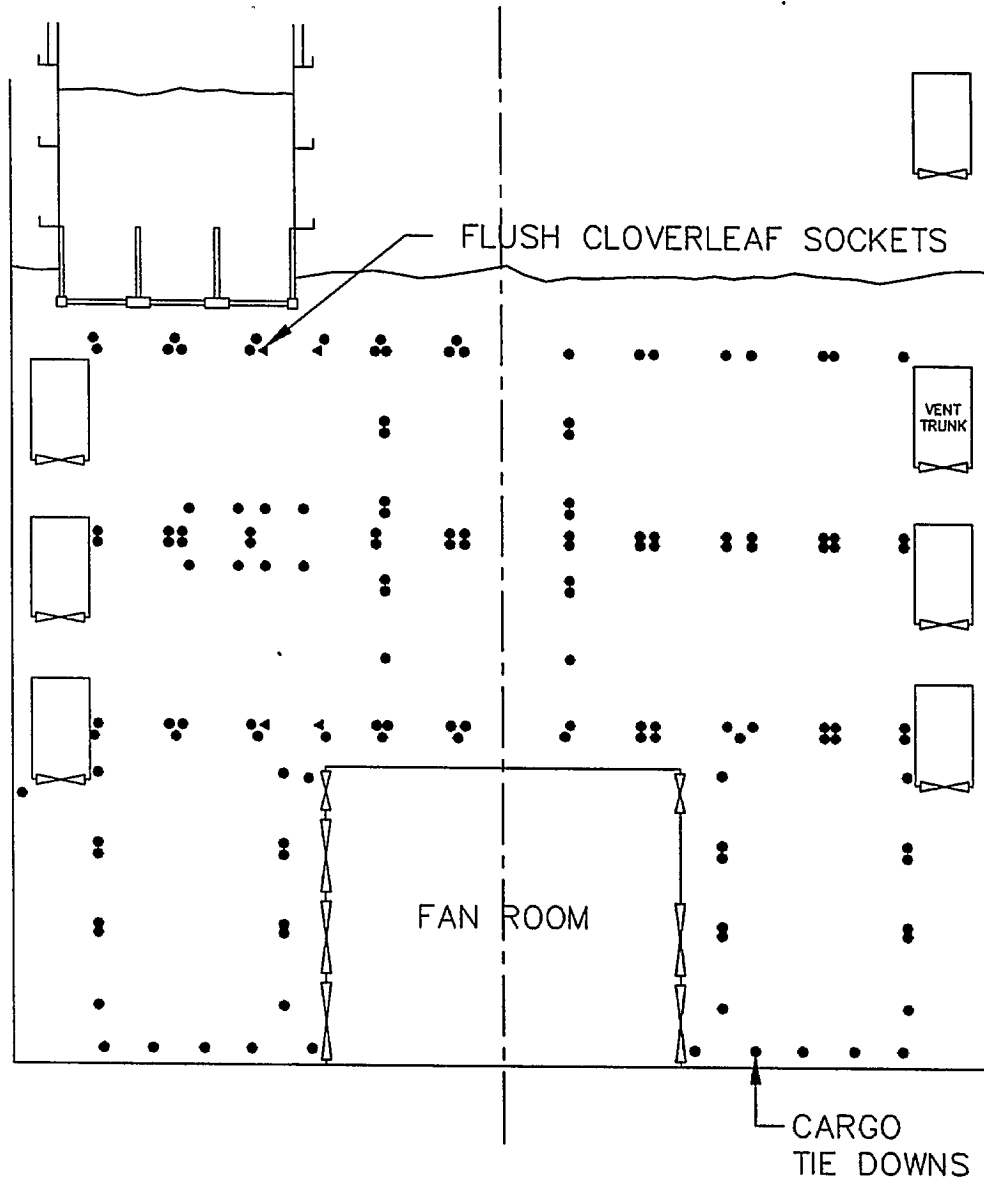
FR 110 - FR 144

SCALE: 1/20" = 1'-0"

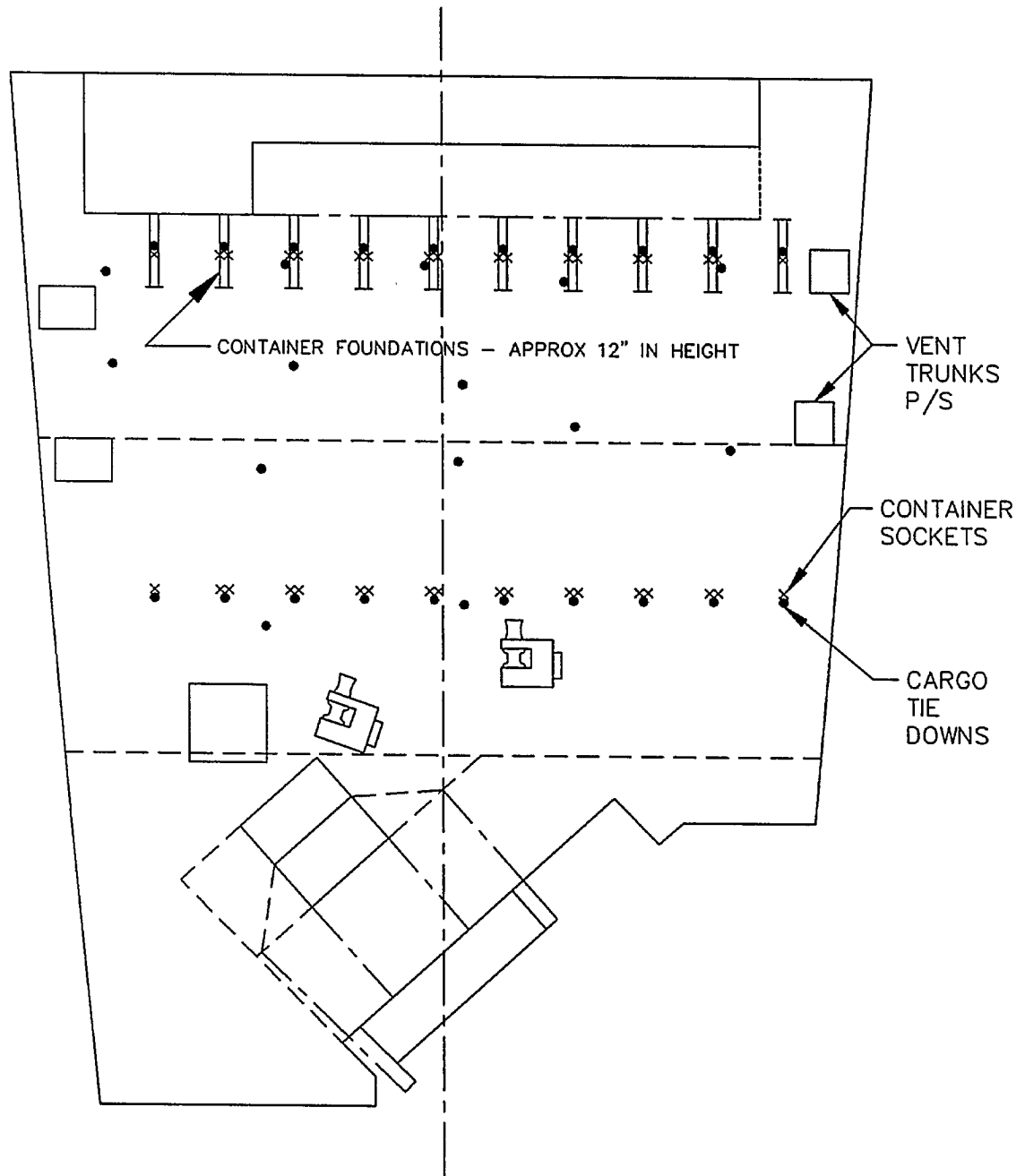


A DECK

FR 144 - FR 172
SCALE: 1/20" = 1'-0"

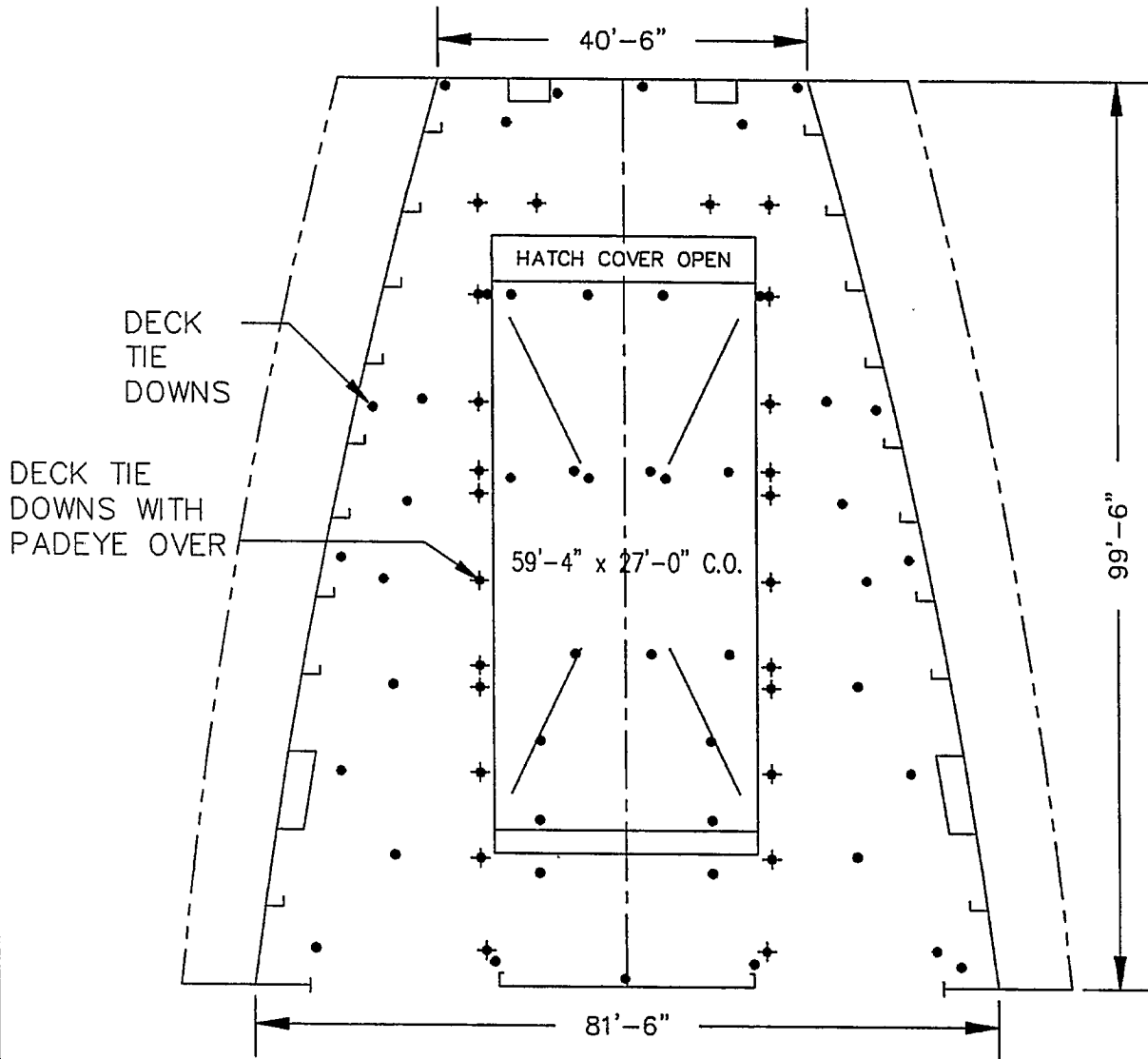


A DECK
AFT OF FR 202
SCALE: 1/20" = 1'-0"



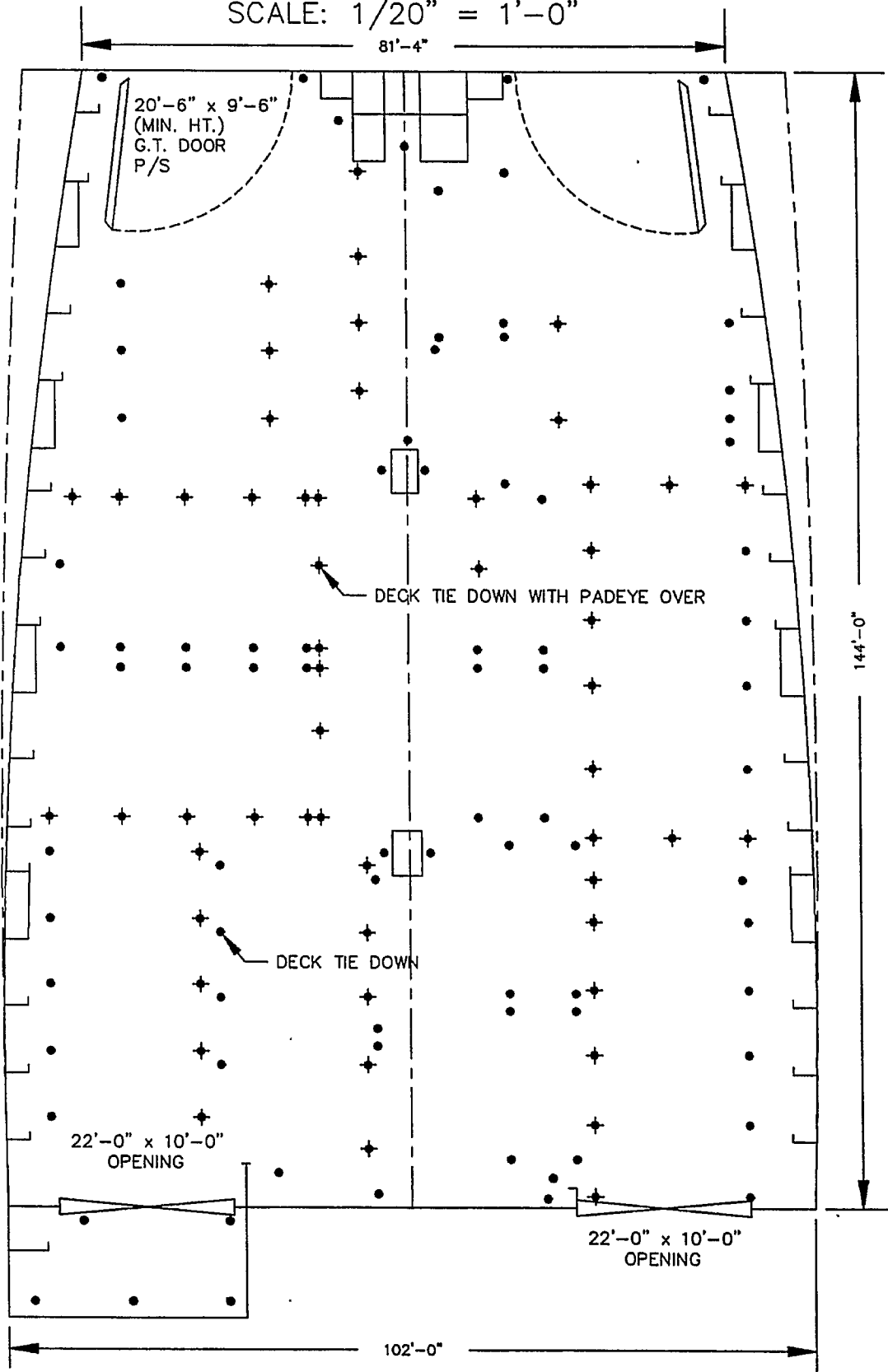
B DECK

CARGO HOLD NO. 1
SCALE: 1/20" = 1'-0"



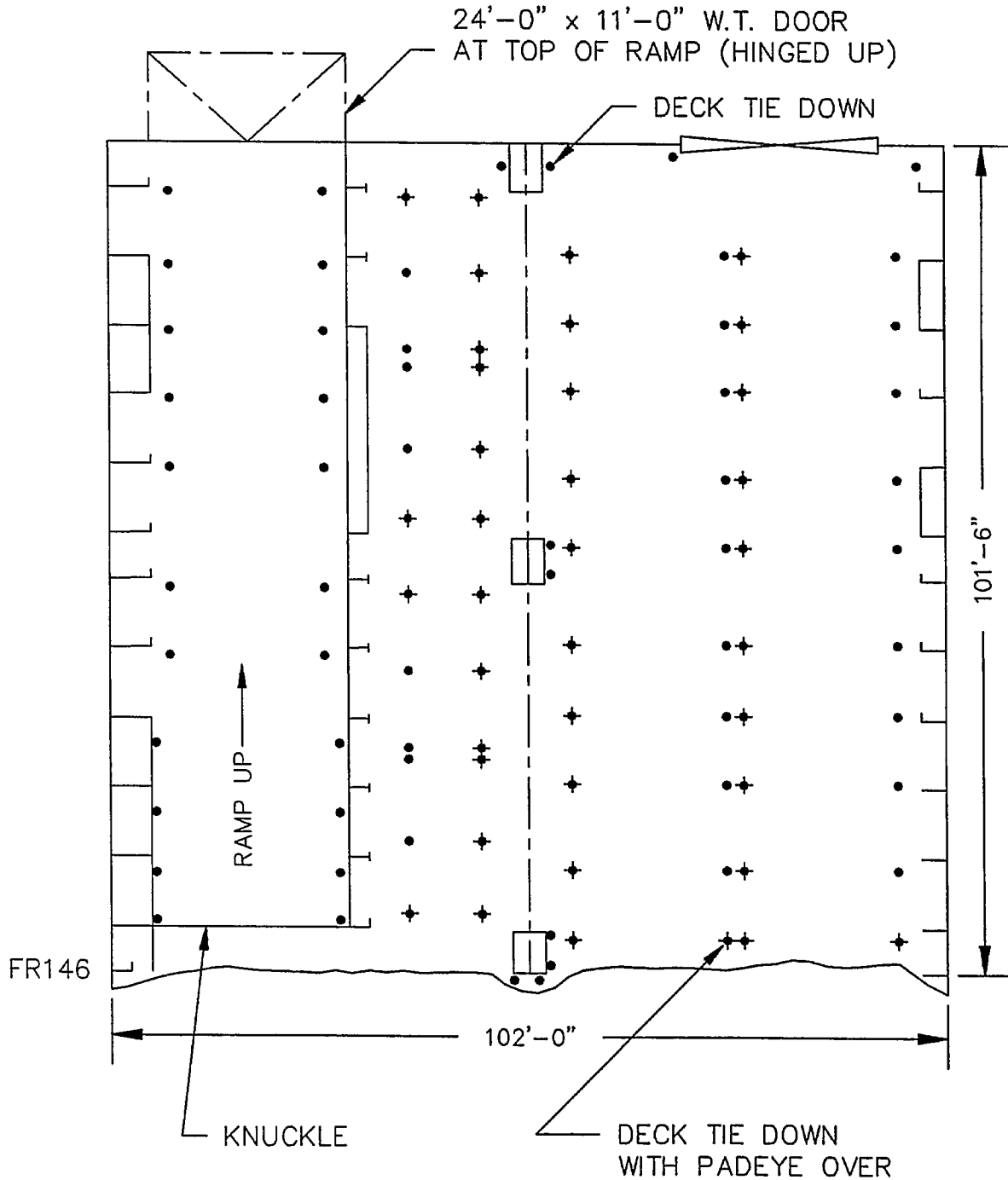
B DECK

CARGO HOLD NO. 2
SCALE: 1/20" = 1'-0"



B DECK

CARGO HOLD NO. 3
FWD OF FR 146
SCALE: 1/20" = 1'-0"

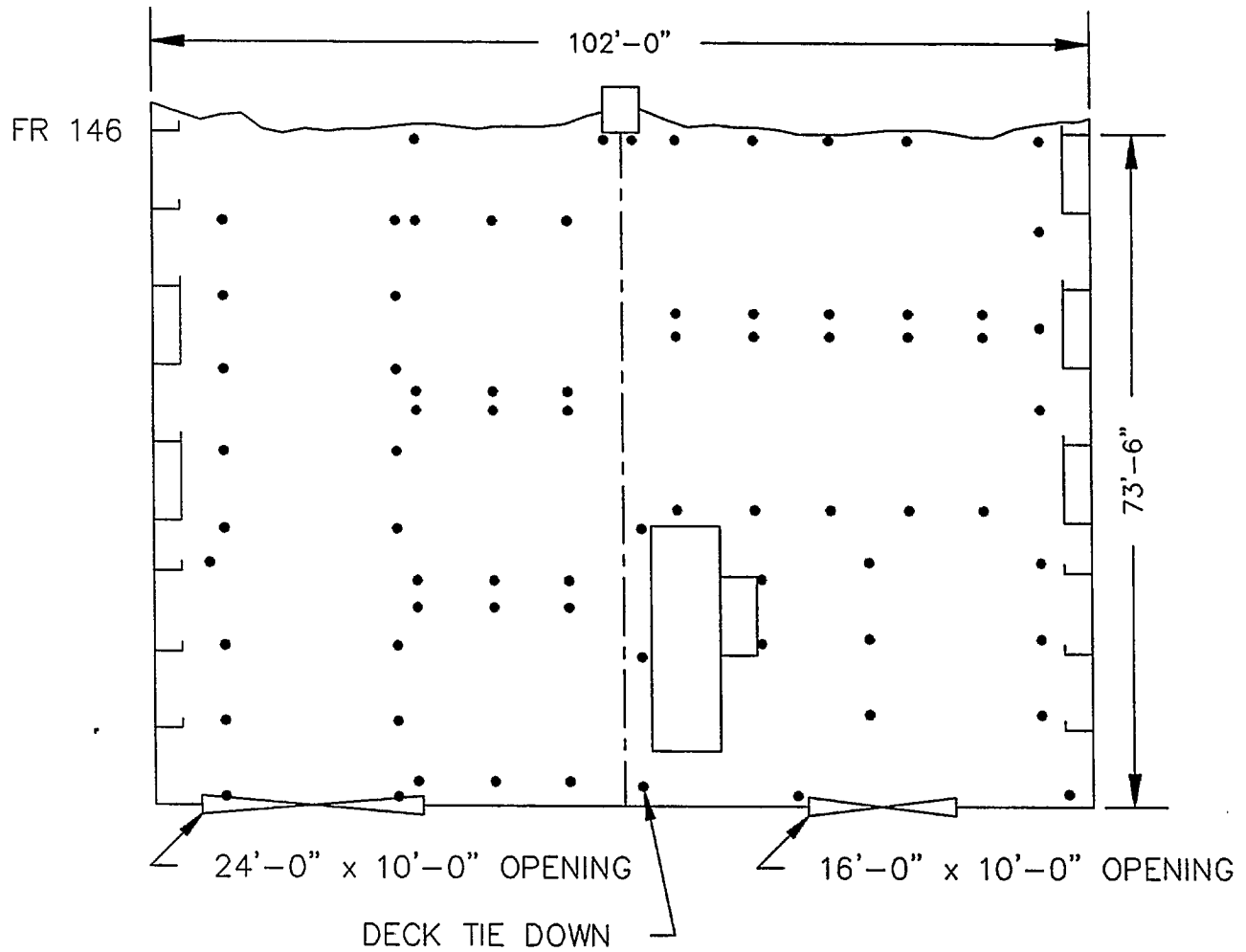


B DECK

CARGO HOLD NO. 3

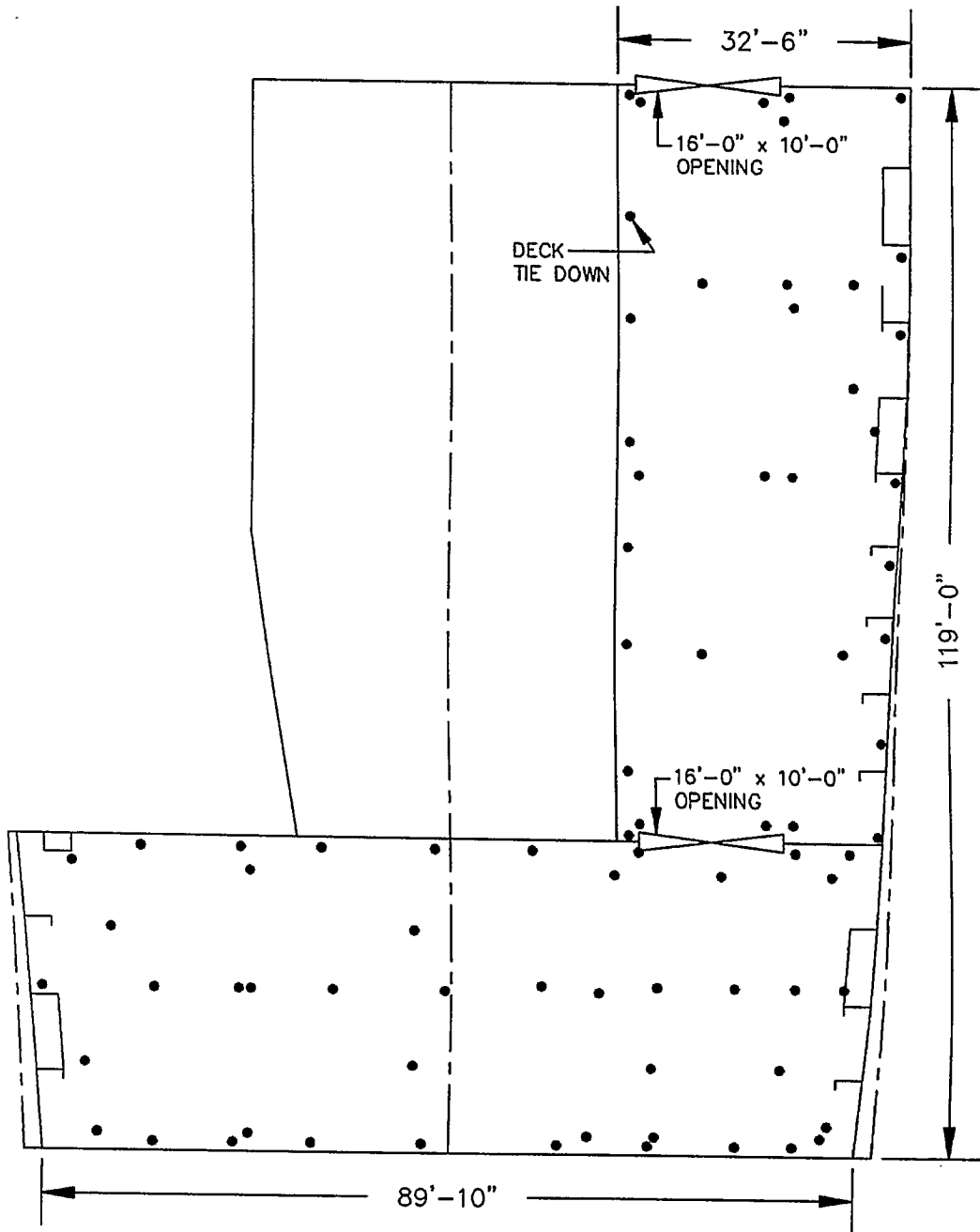
AFT OF FR 146

SCALE: 1/20" = 1'-0"



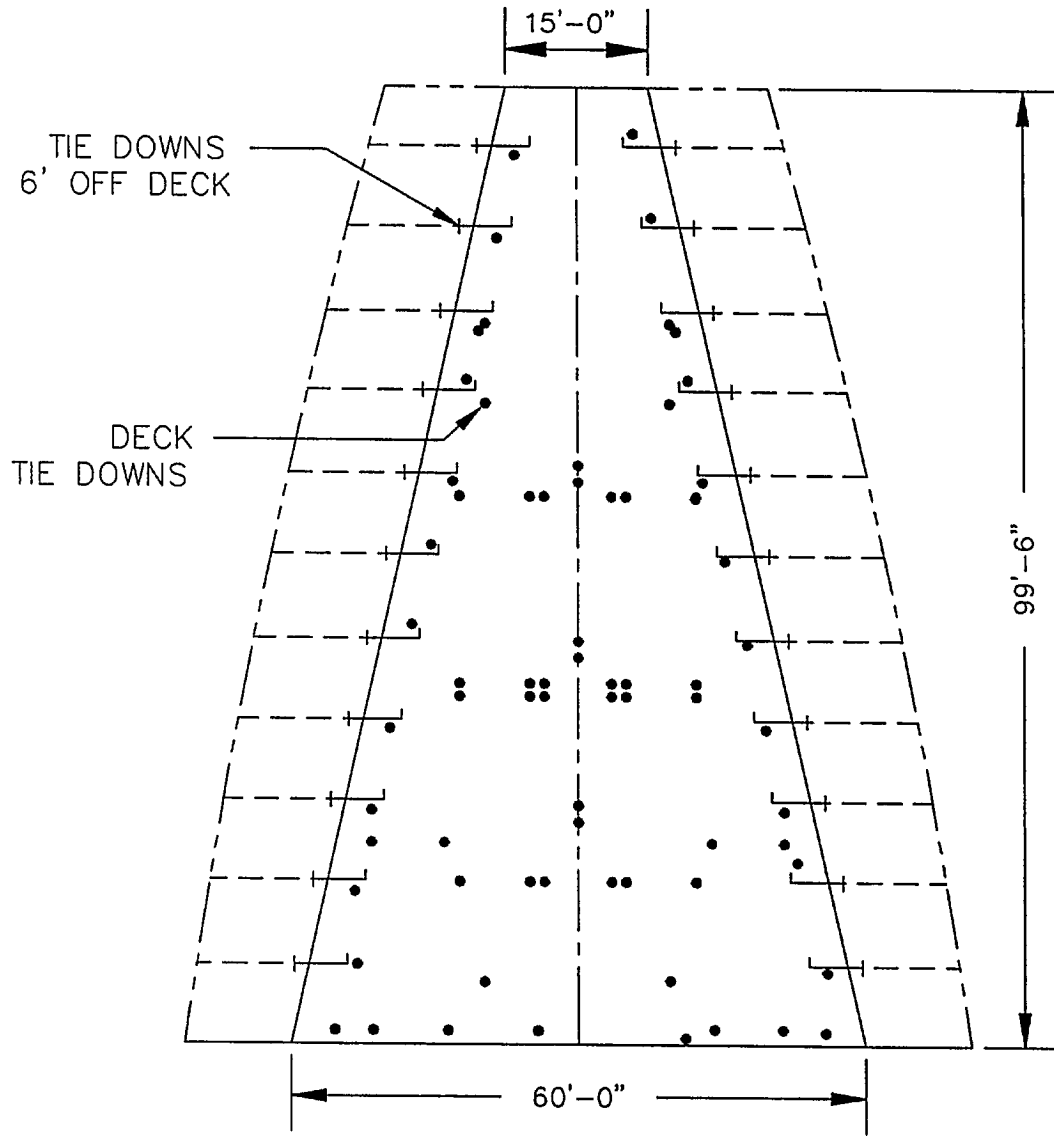
B DECK

CARGO HOLD NO. 4
SCALE: 1/20" = 1'-0"



C DECK

CARGO HOLD NO. 1
SCALE: 1/20" = 1'-0"



C DECK

CARGO HOLD NO. 2
SCALE: 1/20" = 1'-0"

20'-0" x 15'-0"
W.T. DOOR
(HINGED UP)

12'-0" x 15'-0"
W.T. DOOR
(HINGED UP)

60'-0"

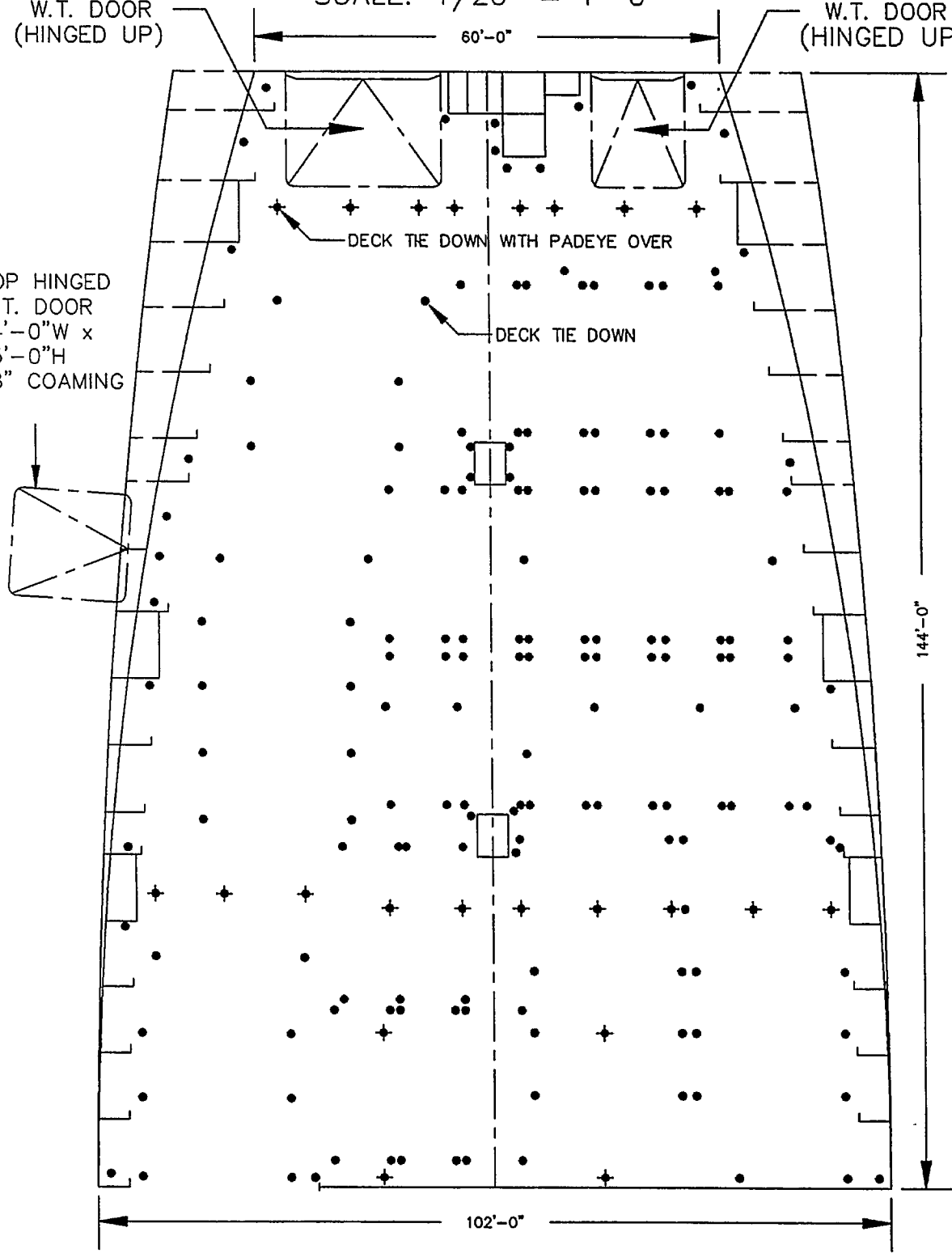
TOP HINGED
W.T. DOOR
14'-0"W x
15'-0"H
18" COAMING

DECK TIE DOWN WITH PADEYE OVER

DECK TIE DOWN

144'-0"

102'-0"

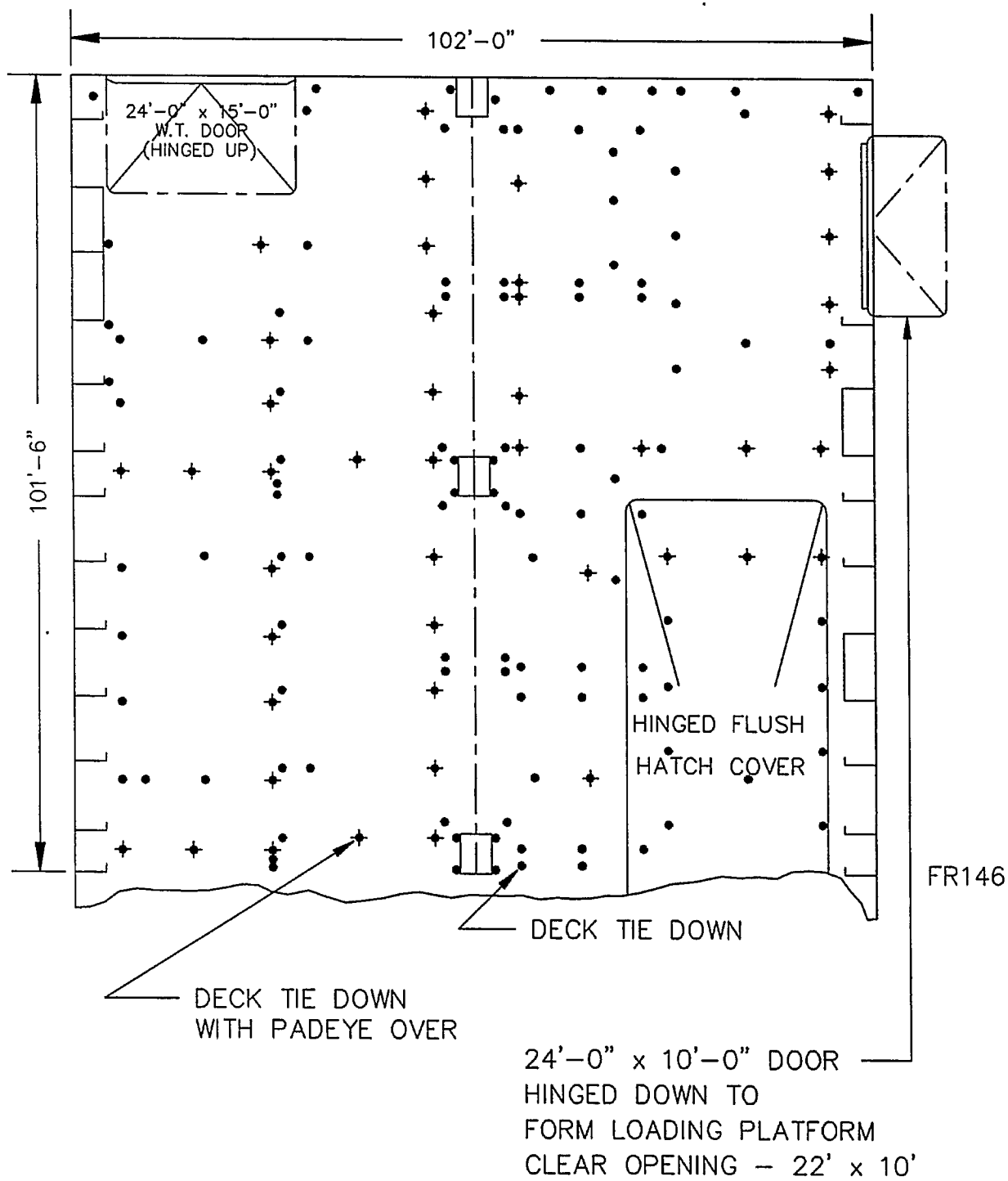


C DECK

CARGO HOLD NO. 3

FWD OF FR 146

SCALE: 1/20" = 1'-0"

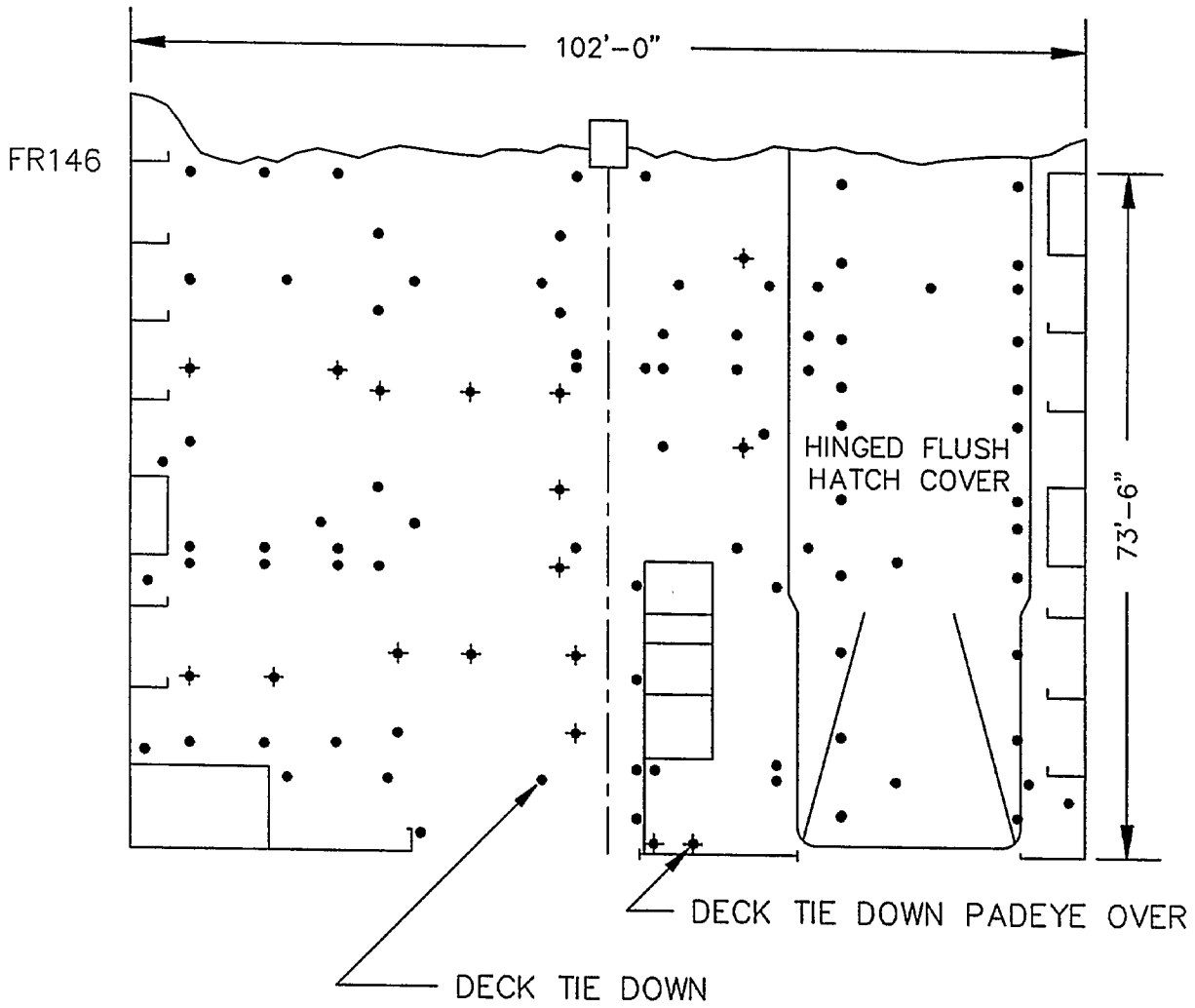


C DECK

CARGO HOLD NO. 3

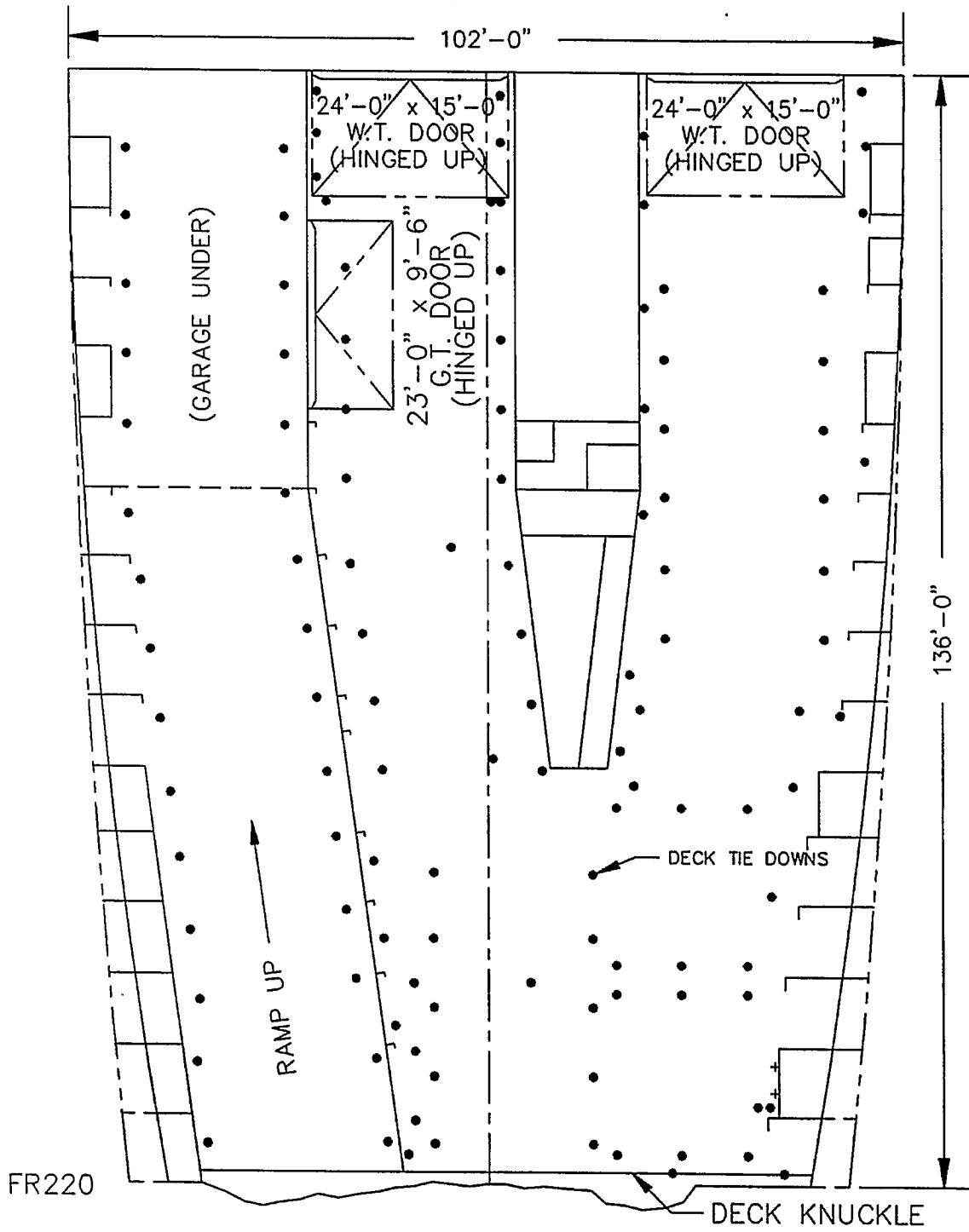
AFT OF FR 146

SCALE: 1/20" = 1'-0"



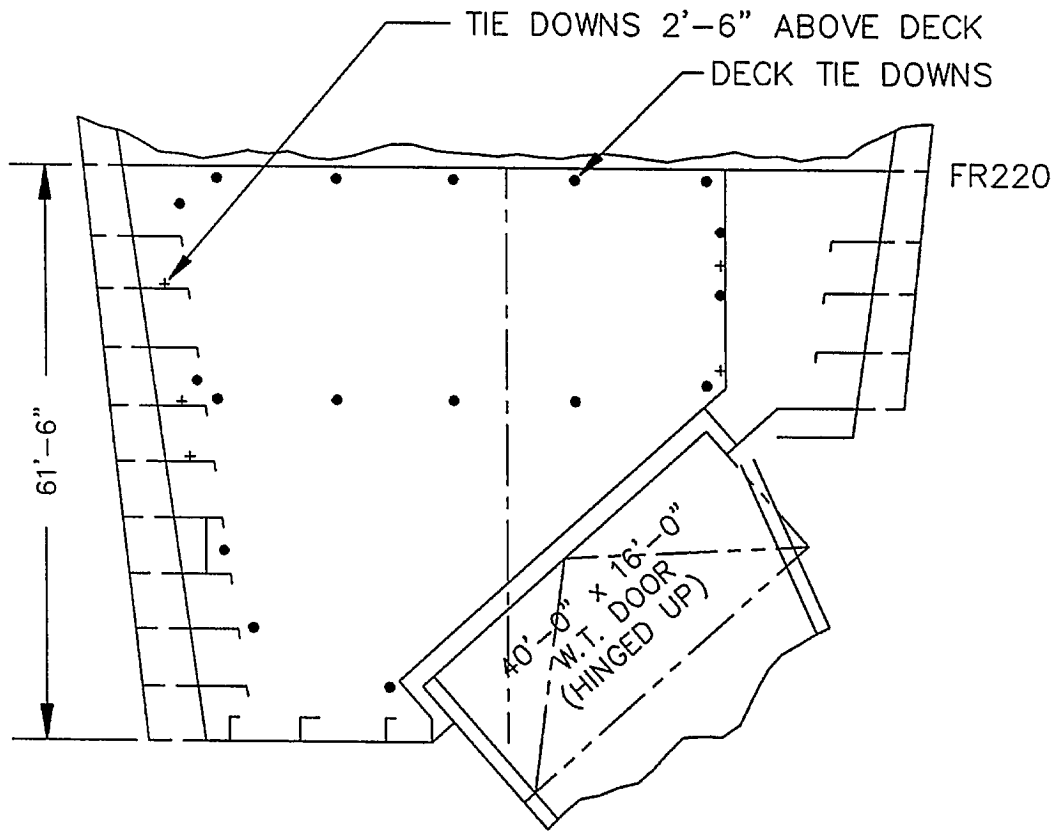
C DECK

CARGO HOLD NO. 4
FWD OF FR 220
SCALE: 1/20" = 1'-0"



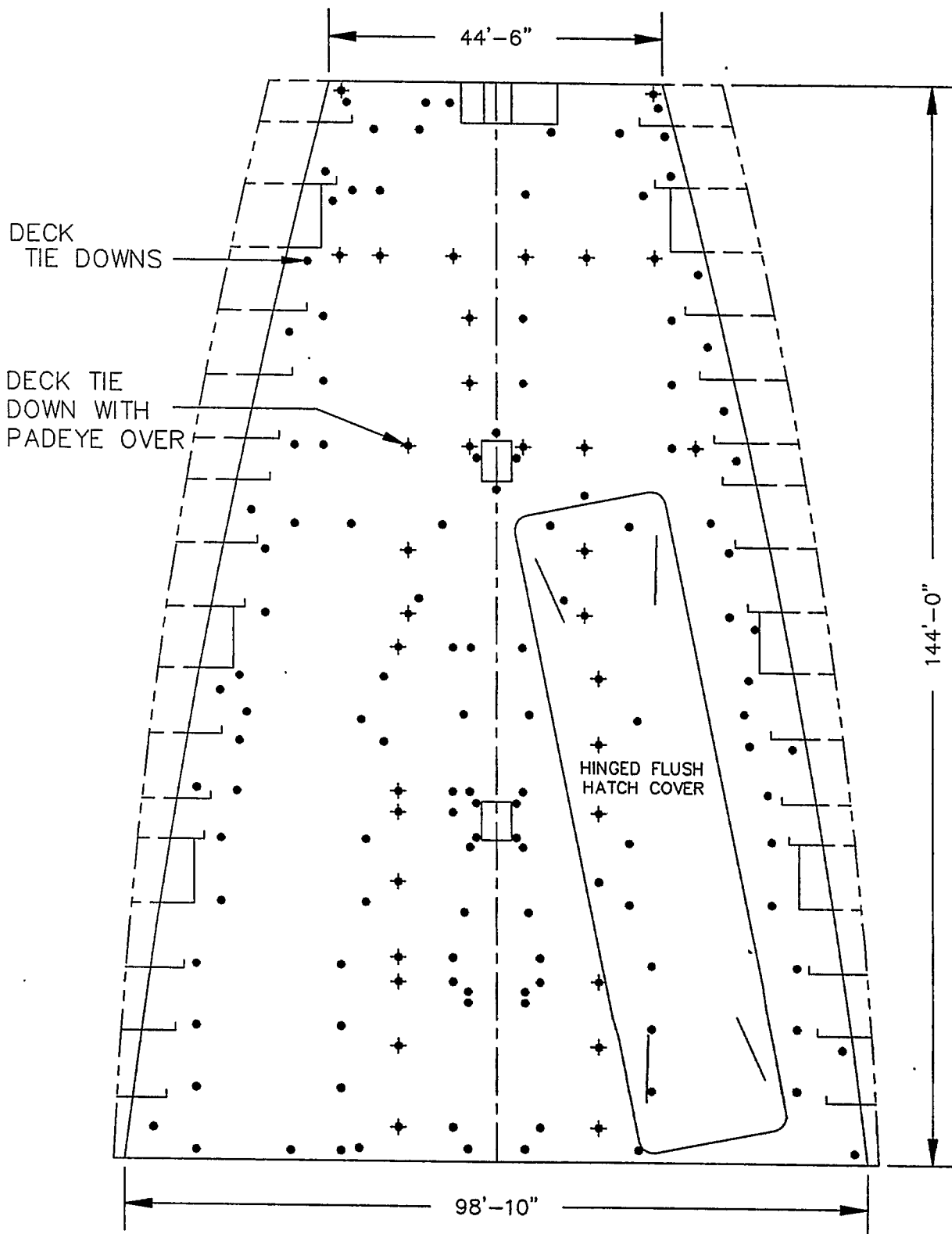
C DECK

CARGO HOLD NO. 4
AFT OF FR 220
SCALE: 1/20" = 1'-0"



D DECK

CARGO HOLD NO. 2
SCALE: 1/20" = 1'-0"

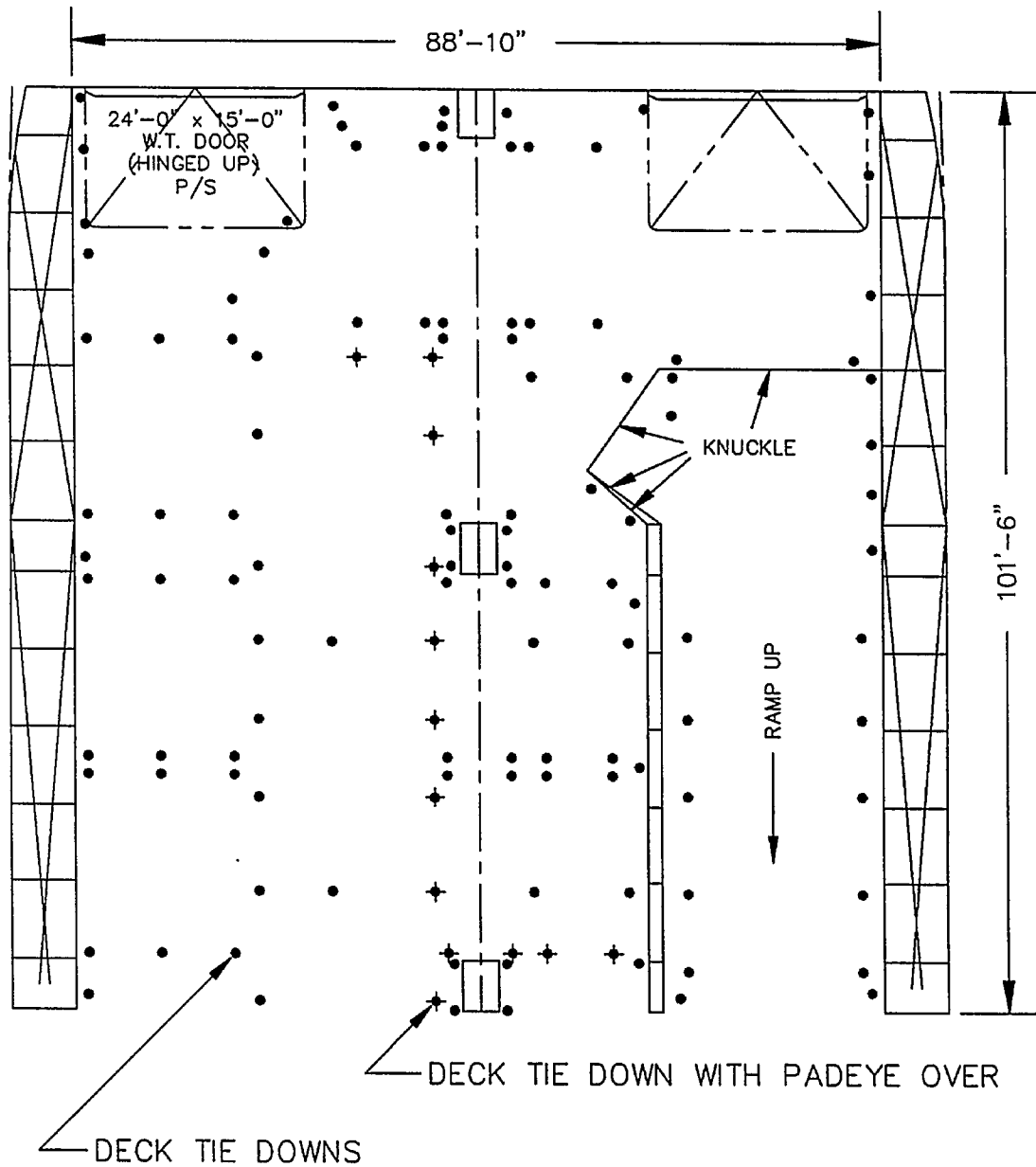


D DECK

CARGO HOLD NO. 3

FWD OF FR 146

SCALE: 1/20" = 1'-0"

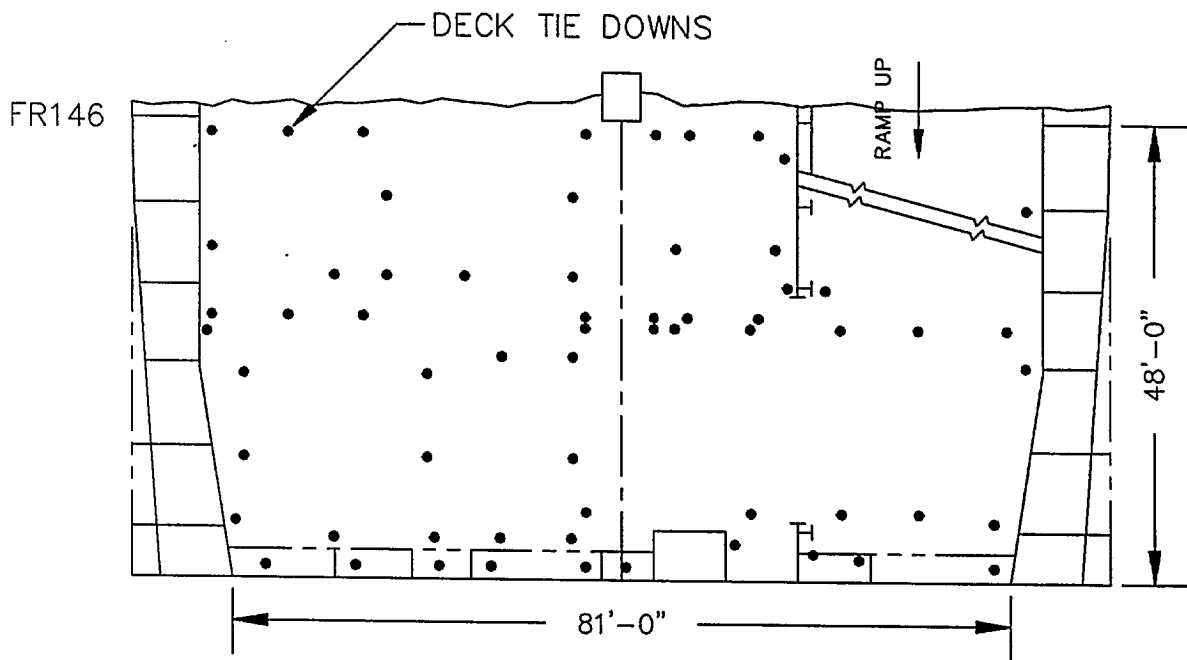


D DECK

CARGO HOLD NO. 3

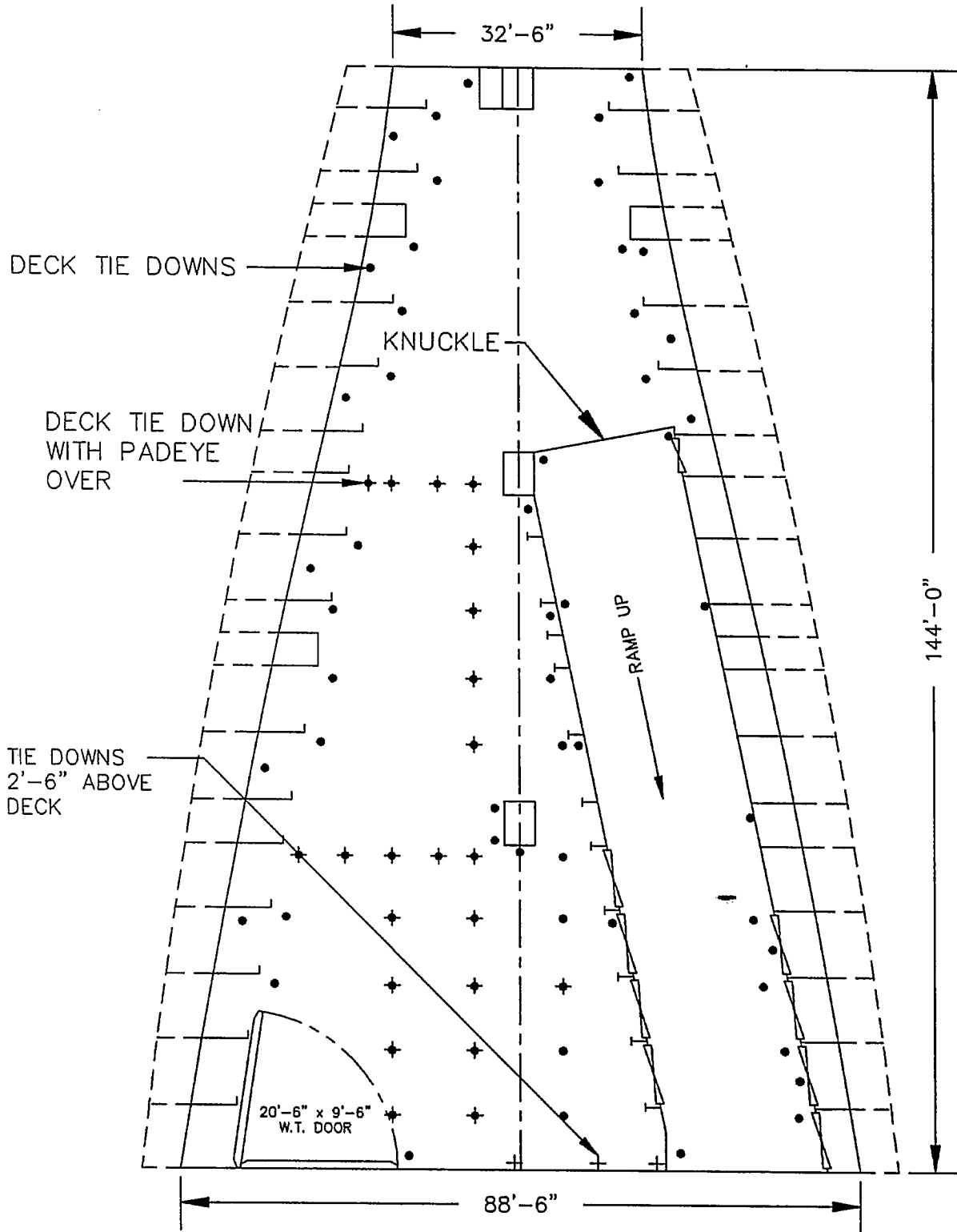
AFT OF FR 146

SCALE: 1/20" = 1'-0"



E DECK

CARGO HOLD NO. 2
SCALE: 1/20" = 1'-0"



E DECK

CARGO HOLD NO. 3
SCALE: 1/20" = 1'-0"

